

# WEBEL TECHNOLOGY LIMITED

## **NOTICE INVITING e-TENDER**

Online Tender documents are invited for implementation of Supply, Installation, Testing, Commissioning (SITC) and Maintenance of CCTV surveillance systems in Govt. sponsored / aided Girls' and Co-Ed Secondary/Higher Secondary Schools and Girls' Hostels in West Bengal, Under School Education Department, Govt. of West Bengal. Bids are invited from reputed System Integrators having sufficient experience and credentials for successful completion of “**Similar Nature**” of work in a Central or State Government Department/PSU/Autonomous Body. WTL has been chosen as the execution authority for the same. Bidder must have adequate Service Engineer for providing on-site support service within the stipulated time as prevalent for CCTV setups.

1.	Tender No. & Date	WTL/SE/CCTV/21-22/030 dated 26/01/2022
2.	Tender Version	1.0
3.	Brief description of material	Supply, Installation, Testing, Commissioning (SITC) and Maintenance of CCTV surveillance systems in Govt. sponsored / aided Girls' and Co-Ed Secondary/Higher Secondary Schools and Girls' Hostels in West Bengal, Under Directorate of School Education, Govt. of West Bengal.
4.	Tender Fee	Rs.10000.00 (Rupees Ten thousand only). The amount to be transferred online through e-tender portal.
5.	Earnest Money Deposit	Rs. 10,00,000.00 (Rupees Ten Lakhs Only). The amount to be transferred online through e-tender portal. Or In the form of Bank Guaranty (BG) as per format enclosed. Validity of BG should be six months exclusively for this tender
6.	Date of Downloading	26.01.2022
7.	Pre-Bid Meeting date & time	02.02.2022 at 12.00 Hrs. (On-Line Meeting) <ul style="list-style-type: none"><li>• Pre-Bid meeting will be organizing online platform only.</li><li>• Only queries as per format (Section - L) reaching WTL by 01.02.2022 at 15.00 Hrs. will be taken for decision.</li><li>• Interest bidders are requested to send mail to <a href="mailto:purchase@wtl.co.in">purchase@wtl.co.in</a> for participation of online pre-bid meeting. Based on request WTL will share meeting id / links for meeting. If there is any change in date and time then will inform.</li><li>• Only queries as per format (Section - N) reaching WTL by 02.01.2022 at 15.00 Hrs. will be taken for decision.</li><li>• Queries will be sent to Manager (Purchase) (<a href="mailto:purchase@wtl.co.in">purchase@wtl.co.in</a>)</li></ul>
9.	Bid Submission Start date & time	11.02.2022 at 14.00.hrs.
10.	Last date & time of EMD & Tender Fee submission intimation.	Before Uploading of Tender
11.	Last date & time of Bid Submission	16.02.2022 at 12.00.hrs.
12.	Date & time of Technical Bid opening	18.02.2022 at 12.00.hrs.
13.	WTL Address	WEBEL TECHNOLOGY LIMITED (A Govt. of West Bengal Undertaking) Plot - 5, Block – BP, Sector – V, Salt Lake City, Kolkata – 700091.
14.	Contact number	033-23673403-06 (WTL Purchase)

## **WEBEL TECHNOLOGY LIMITED**

1. Intending bidder may download the tender documents from the website <https://wbtenders.gov.in> directly with the help of Digital Signature Certificate. Necessary Tender fee may be remitted online through e-tender portal in favour of “Webel Technology Limited” and also to be documented through e-filing. Necessary Earnest Money Deposit (EMD) may be remitted online through e-tender portal in favour of “Webel Technology Limited” and also to be documented through e-filing.
2. Both Techno Commercial Bid and Financial Bid are to be submitted concurrently duly digitally signed in the website <https://wbtenders.gov.in>.
3. Tender documents may be downloaded from website and submission of Techno Commercial Bid and Financial Bid will be done as per Time Schedule stated in Section – C of this Tender Document.
4. The Financial Bid of the prospective Bidder will be considered only if the Techno Commercial Bid of the bidder is found qualified (for the entire scope of the project) by the Tender Committee. The decision of the ‘Tender Committee’ will be final and absolute in this respect. The list of Qualified Bidders will be displayed in the website.
5. The award of the contract shall be based on each Zone. Bidders whose price bid shall be deemed to be L1 for any zone, shall be eligible for award of the contract for supply and installation as per BoQ, for the zone. The following rules shall be applicable:
  - Bidders must submit price bid for each of the 6 zones. Any non-compliance to the price bid shall lead to rejection.
  - L1 Bidders for each zone shall be awarded the contract for the respective zone.
  - No bidder shall be awarded for more than 3 zones out of the 6 zones.
  - If a bidder is deemed to be separately evaluated as L1 bidder in more than 3 zones, the bidder shall have the right to choose the 3 zones for award of contract.
  - Any zone, which is left out by the L1 bidder, shall be automatically assigned to the next highest bidder for matching the L1 price, for award of contract.
  - The L2 Bidder shall be awarded the contract for the remaining zone, if they agree to match the L1 price.
  - In case no qualified bidder agrees to match the L1 price, the remaining zone may, at the discretion of WTL, be awarded to the overall L1 bidder for that zone.
  - The rule for award of contract shall be followed for this tender and any exception may only be at the discretion of the WTL tender committee.
6. All clarifications / corrigenda will be published only on the <https://wbtenders.gov.in>.

# **WEBEL TECHNOLOGY LIMITED**

## **CONTENTS OF THE TENDER DOCUMENT**

The Tender document comprises of the following:

<b>SECTION – A</b>	<b>BACKGROUD &amp; OBJECTIVE OF THE PROJECT</b>
<b>SECTION – B</b>	<b>OVERALL SCOPE OF WORK AND TIME SCHEDULE</b>
<b>SECTION – C</b>	<b>ZONE-WISE BILL OF MATERIAL</b>
<b>SECTION – D</b>	<b>ELIGIBILITY CRITERIA</b>
<b>SECTION – E</b>	<b>INSTRUCTIONS TO BIDDER</b>
<b>SECTION – F</b>	<b>TECHNO COMMERCIAL EVALUATION &amp; AWARDING OF CONTRACT</b>
<b>SECTION – G</b>	<b>BID FORM</b>
<b>SECTION – H</b>	<b>GUIDANCE FOR E-TENDERING</b>
<b>SECTION – I</b>	<b>FORMAT FOR TECHNICAL CAPABILITY OF BIDDER</b>
<b>SECTION – J</b>	<b>FORMAT FOR FINANCIAL CAPABILITY OF BIDDER</b>
<b>SECTION – K</b>	<b>FORMAT FOR BIDDER'S DETAILS</b>
<b>SECTION – L</b>	<b>FORMAT FOR PRE-BID MEETING QUERY</b>
<b>SECTION – M</b>	<b>PROFORMA FOR PERFORMANCE BANK GUARANTEE</b>
<b>SECTION – N</b>	<b>MAKE, MODEL &amp; PART NUMBER</b>
<b>SECTION – O</b>	<b>TECHNICAL SPECIFICATION WITH COMPLIANCE STATEMENT</b>
<b>SECTION – P</b>	<b>MANUFACTURER AUTHORISATION FORM</b>
<b>SECTION – Q</b>	<b>OEM DECLARATION FORM</b>
<b>SECTION – R</b>	<b>NIT DECLARATION</b>
<b>SECTION – S</b>	<b>DECLARATION OF ELIGIBILITY CRITERIA</b>
<b>SECTION – T</b>	<b>FORMAT FOR LIST OF CLIENTS OF SIMILAR ORDER</b>
<b>SECTION – U</b>	<b>LIST OF LOCATIONS</b>

# WEBEL TECHNOLOGY LIMITED

## **SECTION – A** **PROJECT BACKGROUND**

### **1 BACKGROUND&OBJECTIVE OF THE PROJECT**

Webel Technology Limited, (WTL), as the nodal agency for Government of West Bengal entrusted with the responsibility of implementing eGovernance projects for various departments, have been selected to implement the security and surveillance solution in 312 schools and hostels in Phase I, as follows:

- Girls/CoED Type 1 – 5 Schools (16 Cameras)
- Girls/CoEd Type 2 (including Dow Hill) – 111 Schools (32 Cameras)
- Girls/CoEd Type 3 – 44 Schools (64 Cameras)
- Hostel (Model School) – 4 Hostels (16 Cameras)
- Hostel (NIGS) – 19 Hostels (16 Cameras)
- Hostel LWE – 34 Hostels (16 Cameras)
- Hostel Non LWE ( Including DH) – 95 Hostels (16 Cameras)

As per the plan for implementing the project, WTL envisages the total no of schools and hostels consisting of 312 sites, to be broken up into 6 (Six) zones. The breakup of the overall project into multiple scheduled zones, shall enable faster implementation through multiple partners and better services and support for 3 years, included as part of the supply and maintenance scope of work.. The breakup of each zone of the project, is indicated in the list below.

Sl	Zone	Total Sites	School 16 Cam	School 32 Cam	School 64 Cam	Hostel 16 Cam
1	Zone 1S	89	0	6	2	81
2	Zone 2W	38	0	27	9	2
3	Zone 3C	30	0	19	11	0
4	Zone 4C	39	0	24	11	4
5	Zone 5N	44	5	21	7	11
6	Zone 6W	72	0	14	4	54
	<b>Total</b>	<b>312</b>	<b>5</b>	<b>111</b>	<b>44</b>	<b>152</b>

The SIs participating in the tender shall consider the scope of work for the entire project as per the BOQ, in section C. The bidders must comply with technical specifications and BOQ for price schedule for each of the 6 zones. Bidders shall be required to quote for all the 6 zones to technically qualify for the project.

The award of the contract shall be based on each Zone. Bidders whose price bid shall be deemed to be L1 for any zone, shall be eligible for award of the contract for supply and installation as per BoQ, for the zone. The following rules shall be applicable:

- Bidders must submit price bid for each of the 6 zones. Any non-compliance to the price bid shall lead to rejection.
- L1 Bidders for each zone shall be awarded the contract for the respective zone.
- No bidder shall be awarded for more than 3 zones out of the 6 zones.
- If a bidder is deemed to be separately evaluated as L1 bidder in more than 3 zones, the bidder shall have the right to choose the 3 zones for award of contract.
- Any zone, which is left out by the L1 bidder, shall be automatically assigned to the next highest bidder for matching the L1 price, for award of contract.
- The L2 Bidder shall be awarded the contract for the remaining zone, if they agree to match the L1 price.
- In case no qualified bidder agrees to match the L1 price, the remaining zone may, at the discretion of WTL, be awarded to the overall L1 bidder for that zone.

## WEBEL TECHNOLOGY LIMITED

- The rule for award of contract shall be followed for this tender and any exception may only be at the discretion of the WTL tender committee.

Bidders shall be evaluated for the following:

- 1) Eligibility for participation in tender
- 2) Technical evaluation – based on technical compliance to BoQ for each zone, Support infrastructure, and final evaluation through presentation and demonstration of solution.
- 3) Financial Bid

### 1. About WTL

Webel Technology Ltd, a Govt. of West Bengal Undertaking under the Department of P&AR is designated as the state nodal agency for delivery of e-Governance Solutions for the Government of West Bengal. WTL is a certified agency for ISO 9001:2015, ISO/IEC 27001:2013 and CMMI Level 5 certified for delivery of eGovernance services and infrastructure projects. The Governor of West Bengal has authorized WTL both as The State Nodal Agency(SNA) & State Implementing Agency(SIA) for all e-Governance related activities in the State.

WTL was incorporated in April 2001 and has been profitable since inception. Since the last five years, WTL has undertaken the most challenging projects envisaged by the Government and is one of the fastest growing Government Undertakings. WTL has on behalf of the State Government in all its major e-Governance initiatives such as:

- WBSWAN - MPLS-VPN connectivity up to Block levels,
- Integrated Financial Management System,
- e-Recruitment initiatives ,
- e-Reservation for various State Transport Corporations,
- e-Registration of Land Deeds,
- e-Governance initiatives of the Directorate of Commercial Taxes ( e-Registration, e-Amendment, e-Payment, e-Return, e-Refund, e-Appeal, e-Forms, e-STDS & DMS),
- Digitization of all legacy Land records and Modernization of Record Rooms up to Block level and
- implementation of Incident Response System along with setting up of State-of-the-art Emergency Operation Centre for the Department of Disaster Management etc.

WTL has also partnered the Excise Directorate, Treasuries and Pay & Accounts, Home, Labour, Sericulture, Agriculture, Forest, Food & Supplies, Consumer Affairs in their IT & ITES initiatives. In addition to partnering State Government Departments, WTL has been following a "LOOK OUTWARD" policy and is doing a number of National Projects and Projects in various State Governments. Some of the National Projects executed successfully by WTL are NPR, SECC and PEC. Some of the States in which WTL is executing projects are Odisha, Jharkhand, Tripura, Meghalaya, Arunachal Pradesh and Delhi.

# WEBEL TECHNOLOGY LIMITED

## **SECTION – B** **OVERALL SCOPE OF WORK & TIME SCHEDULE**

### **2 Overall Project Scope**

#### **2. Supply of Equipment & services**

The actual location of cameras to be installed shall be determined during detailed site survey during the implementation. The scope of work to be performed by the implementation partner for Schools & Hostels (sites) covered under this project are detailed below with the estimated BOQ for the project.

The scope of work outlined consists of the following:

- 1) Technical Scope of Work – Delivery and installation of:
  - a. Active Components – Supply, Installation, Testing & Commissioning and support of Active components.
  - b. Passive Components – Supply, Installation, Testing and maintenance of Passive Components
- 2) Services Scope of Work – Logistics, site readiness, installation and testing, commissioning, Project Management services.
- 3) Warranty & Support for 3 years - Maintenance Infrastructure management at each district with technical support personnel and spares, centralized call center and OEM repair center as per detailed scope below.

The technical scope of work shall be described in this section in details covering all the items to be supplied and the services to be delivered. The Scope of Work includes the Project Management Services and the support services to be delivered under warranty for all products for 3 year, including comprehensive onsite support for 3 years after installation, for the list of sites to be covered in this scope.

#### **2.1.1 Active Components**

**The scope of supply and installation at each site shall include active components and power conditioning equipment at each school. The detailed specification for each type of equipment is detailed in Section - O. The following are the required components standardized for each type of school/hostel and applicable to scope of work/supply for all zones.**

1. CCTV Camera: Minimum Resolution of all cameras will be 5MP with recording capacity. The cameras to be supplied shall be
  - ❖ Indoor - 5MP IP Bullet Network Camera
  - ❖ (IR Range: 30 mts.)
  - ❖ 3 years onsite warranty
2. Central Video Storage/ NVR: The Storage to be provided for the project are of various types and must include 3 years onsite warranty.
  - ❖ Sites with 16 Cameras – 16 Channel NVR with 2 SATA bays for video storage to accommodate video recording (@2MP) from the 16 cameras for 1 month, provisioned with 2 nos of 8 TB or higher TB hard

## WEBEL TECHNOLOGY LIMITED

disk drive.

- ❖ Sites with 32 Cameras – 32 Channel NVR with 4 SATA bays for video storage to accommodate video recording (@2MP) from the 32 cameras for 1 month, provisioned with 3 nos of 8 TB or higher TB hard disk drive.
  - ❖ Sites with 64 Cameras – 64 Channel NVR with 8 SATA bays for video storage to accommodate video recording (@2MP) from the 64 cameras for 1 month, provisioned with 5 nos of 8 TB or higher TB hard disk drive.
3. Hard Disk, Enterprise Class (8 TB) – Each Camera shall be activated with video recording and storage for 30 days. The storage resolution of 2 MP, shall require 20 GB of Storage per camera/day, with motion sensing feature activated for recording. The following shall be the HDD required at each type of site:
- ❖ Sites (Schools/Hostels) with 16 Cameras – 2 Nos of 8 TB HDD
    - 16 Cameras x .02 TB/Day x 30 days = 9.6 TB/Month
  - ❖ Sites (Schools) with 32 Cameras – 3 Nos of 8 TB HDD
    - 32 Cameras x .02 TB/Day x 30 days = 19.2 TB
  - ❖ Sites (Schools) with 64 Cameras – 5 Nos of 8 TB HDD
    - 64 Cameras x .02 TB/Day x 30 Days = 38.4 TB

The above calculations are approximate estimations and OEMs shall validate the same for each type of site before quoting for the hard disk capacity required.

4. Video Management Software (VMS) – The video management and monitoring software shall be provided as per the number of cameras in each site. The VMS shall be installed on the NVR and shall manage the storage from each camera. The VMS shall be connected to the monitoring panel for viewing the feed from each camera. The VMS system will also be used by the site in charge to report malfunction or issues in any camera or recording of video footage storage. The VMS software is expected to be provided along with the Camera Solution provided from the same OEM to avoid integration issues.
5. 16 & 8 Port PoE Switch – 16 port and 8 Port, L2 Un-Managed POE switch shall be installed in Schools and Hostels to connect the cameras to the Network Video Storage (NVR) for video and audio recording. The detailed specification for each type of switch along with OEM criteria for qualification is specified in section O.
- The number of 16 port POE switch shall be provisioned, according to the number of cameras per site, as specified in the BOQ for each type of site.
  - The number of 8 port switches shall be required at each site as per the number specified in the BOQ for each type of site.
6. 1 KVA Online UPS – For the purpose of providing clean and uninterrupted power supply to all the active components, including NVR storage, 16 Port POE switch and display unit.
- 1 Nos. of 1 KVA online UPS with standard backup of 30 mins is proposed for each site to be covered under the project. The 1 KVA UPS shall be installed centrally to provide power back up the NVR storage and the Display unit and the 16 Port Switch.
7. 600/650 VA UPS: Each extension of the network switch through 16 Port/8 Port switch shall also require one no. of 600 VA UPS to be installed for backup to the switches, to provide uninterrupted power supply to the cameras connected to the extended switch.
- 600/650 VA UPS required for each extension switch to be installed at site. The calculation is provided in table below.
8. Video Monitoring Smart Panel – Each location shall require a single 43" FHD IPS/VA Video panel connected directly to the NVR Storage for monitoring of the camera feed. The School HM/Administration shall be able to monitor the video feed from each camera and also be able to monitor the functioning of each camera and storage. The minimum specification for the components are:
- Smart Panel - 43" Full HD IPS/VA Display x 1 at each site.

## WEBEL TECHNOLOGY LIMITED

### 2.1.2 Network Passive Components

1. **CAT 6 Cables**– The Cat 6 cables are used to connect the Camera to the POE switch, and to connect to the centralized storage for recording of audio and video. The Tender Document estimates the total length of the cable (CAT 6) required for each site shall be based on the number of cameras and table below provides the calculation of length of cable required per site on average.
  - Sites with 16 Cameras – 4 Box (305 m/Box)
  - Site with 32 Cameras – 7 Box (305 m/Box)
  - Site with 64 Cameras – 13 Boxes (305 m/Box)
2. **PVC Conduits (20 mm)** – The CAT 6 cable shall be laid through the 20 mm PVC Conduits. The total length of the PVC conduits estimated per site shall be same as the estimated length of CAT 6 cable estimated above.
3. **Network Accessories (Patch Panel, Patch Chord, Jack Panel, etc.)** – The network accessories required for installation of the network and connecting the cameras installed to the NVR storage shall be provisioned per site. Patch Panel, Patch Chord and Jack Panel, required for proper passive installation of network shall be provisioned for each site. The estimated requirement for the Network accessories shall be as per the number of cameras installed per site and will be estimated at actuals during implementation. The following are the network accessories required for each type of site and the exact quantities for each type of site is specified in the BOQ:
  - UTP Patch Panel: 24-Port
  - Cat6 UTP Keystone Jack White
  - Cat6 UTP Patch Cord - 0.5Mtr
  - Cat6 UTP Patch Cord - 2Mtr
  - Cat6 IJTP Patch Cord - 3Mtr
4. **Wall Mounted Rack** – The rack is required for housing of the storage, network equipment, including POE switch. The total no. of racks required is specified for each type of site in the BOQ:
  - ❖ 15/6 U Rack floor or wall mounted rack for Video Storage/Switch installation.
  - ❖ 1 No. 6U Rack for each PoE Switch to be installed.
5. **PVC Conduits (20 mm)** – The CAT 6 cable shall be laid through the 20 mm PVC Conduits. The total length of the PVC conduits estimated per site shall be same as the estimated length of CAT 6 cable estimated above.

### 2.1.3 Services

The services to be delivered shall be as specified below for the supply, installation, testing and commissioning (SITC) and for laying of cables (cat6) through PVC conduits. The bidders shall be required to quote for such services as may be required. The most critical aspect of the project for “CCTV Surveillance System with 12 months storage facility” at Schools and Hostels in each zone, are the proposed services and support from the selected System integration partners. The service to be provided are provisioned in this Tender Document are as follows:

1. **Supply, Installation, Testing and Commissioning (SITC)** – SITC costs are estimated at each site on an average per site basis. The SITC cost will include site inspection, site preparation, installation and testing, and commissioning of all active and passive equipment at site. The installation services of the project at each and every site is a critical component of the project and shall include the following:
  - a. Supply and logistics for all items as per BoQ.
  - b. Site inspection, planning and site preparation support for installation.
    - ❖ Minimum 100 m of 3C un-armored power cable (1.5 Sq.mm)
    - ❖ Power accessories – Required such as plug points, switches and other accessories.
  - c. Creation of “Asset identification” for each type of equipment installed at site, with description of the asset. The asset database for the project shall be created to enable proper asset tracking and support.



## WEBEL TECHNOLOGY LIMITED

- d. Installation of all active components including setting up of cameras, network switch, NVR storage and High End Desktop Computer with the smart display panel.
  - e. Installation of VMS software.
  - f. Completion of the passive implementation, including laying of cables through conduits, setting up of rack, connecting all the active components on network with the cameras installed. Necessary electrical work for the completion of the installation, including connecting of the UPS.
  - g. Setting up of the surveillance operations, by making all the cameras functional and connecting with the storage.
2. **Call Center** - Setting up of support call center for reporting of any camera, network or storage fault. The call center will be functional in Govt. working days (10 am to 6 pm) and will register complaints from site. Adequate spare items has to be kept available for support services during 3 years to meet the SLA.
3. **Project Management** – SI shall as part of the project implementation plan, setup a dedicated project management unit, with a program manager, with the following responsibilities:
  - a. Planning project implementation
  - b. Overseeing the project implementation and reporting on progress
  - c. Coordinate with the WTL and School Education Department to ensure smooth installation and quick resolution of any issues during installation.
  - d. Setup of the Support services and ensure SLAs are met.
  - e. Monitoring the Support services as per the SLAs and reporting
  - f. Coordinate with WTL Project team on a regular basis and provide support as and when necessary through the implementation partner.

### 2.1.4 Warranty and Comprehensive Onsite Support

Comprehensive onsite Warranty Support meeting the SLAs defined in this document is required and bidders must comply with all the support requirements, for the following:

- 3 year Comprehensive Warranty Support, including onsite maintenance as per SLA defined.
  - Bidder must provide documentary proof of district level support infrastructure and manpower (support engineers) for proper maintenance of the surveillance infrastructure installed at each site. A service support plan for meeting the SLAs for Warranty and Comprehensive onsite support shall be mandatory.
  - (Bidders will be evaluated based on the existing support infrastructure available in districts of West Bengal as per the evaluation criteria. Any bidder without the necessary service infrastructure and manpower, must submit a detailed plan with an undertaking for setting up necessary service support infrastructure in each district covered under the scope of this project.)
- District Support Center with Support personnel, in each zone
  - 2 dedicated support engineer in each zone
  - Adequate spares inventory in each zone for all hardware to be supplied.

### 3. Estimated BOM - Overall

The following table provides the BOQ of estimated quantity of equipment required for the entire project scope. The bidders shall be required to quote for the items provided in the BOQ for each of the 6 Zones with required authorization from respective OEMs for the Active and Passive components specified in the BOQs. The bidders shall be required to additionally quote for the SITC services, included in each BoQ.

## WEBEL TECHNOLOGY LIMITED

Sl.	Item	Quantity	Unit
	<b>Active</b>		
1	5 MP IP Fixed Bullet Camera (IR Range: 30 mts.)	8880	No.
2	64 Channel NVR [8 SATA]	44	No.
3	32 Channel NVR [4 SATA]	111	No.
4	16 Channel NVR [2 SATA]	157	No.
5	8TB Enterprise HDD	867	No.
6	43" FHD IPS Display	312	No.
7	1 KVA UPS with 30 mnts backup	312	No.
8	600 VA Line Interactive UPS	555	No.
<b>II</b>	<b>Passive</b>		
9	L2 Un-managed 16-Port PoE Switch	555	No.
10	L2 Un-managed 8-Port PoE Switch	312	No.
11	Cat6 UTP Cable	532800	Mts.
12	6U Wall Mount Indoor Networking Rack	555	No.
13	15U Rack with accessories	312	No.
14	UTP Patch Panel: 24-Port	867	No.
15	Cat6 UTP Jack	8880	No.
16	Cat6 UTP Patch Cord - 0.5Mtr	8880	No.
17	Cat6 UTP Patch Cord - 2Mtr	8880	No.
18	Cat6 IJTP Patch Cord - 3Mtr	2044	No.
19	20mm PVC Conduit & accessories	532800	Mts.
<b>III</b>	<b>Services</b>		
20	Cable Laying Charges	532800	Mts.
21a	Supply, Installation, Testing & Commissioning (SITC) of the Surveillance system (site with 16 Cameras)	157	Job
21b	Supply, Installation, Testing & Commissioning (SITC) of the Surveillance system (site with 32 Cameras)	111	Job
21c	Supply, Installation, Testing & Commissioning (SITC) of the Surveillance system (site with 64 Cameras)	44	Job

Note:

- The service components covered under the scope shall be quoted as unit rates.
  - Cable laying charges shall be as per actual length of cable installed, in meters
  - SITC charges shall be based on the total number of cameras to be installed in each site and a site-wise rate must be provided for the total number of sites in the BoQ.
- The equipment rates to be quoted shall be inclusive of 3 years comprehensive onsite warranty and support infrastructure cost, to be provided under the scope of work of the project and as per the SLAs specified.

The following table summarizes calculation of Active Components required for each type of site included in this project.

## WEBEL TECHNOLOGY LIMITED

#	Site Type Description	Total Sites	Backup (days)	Indoor Camera #	Number of 8TB HDD Required	16 Channel NVR [2 SATA]	32 Channel NVR [4 SATA]	64 Channel NVR [8 SATA]	43" FHD IPS Display	L2 POE Switch (8 Ports)	L2 POE Switch (16 Ports)	UPS (Online 2 KVA)	UPS (Line Interactive) 600 VA	VMS License
1	Girls/Coed Type 1	5	30	16	2	1	0	0	1	1	1	1	1	16
2	Girls/Coed Type 2 (+DH)	111	30	32	3	0	1	0	1	1	2	1	2	32
3	Girls/Coed Type 3	44	30	64	5	0	0	1	1	1	4	1	4	64
4	Hostel (Model School)	4	30	16	2	1	0	0	1	1	1	1	1	16
5	Hostel (NIGS)	19	30	16	2	1	0	0	1	1	1	1	1	16
6	Hostel LWE	34	30	16	2	1	0	0	1	1	1	1	1	16
7	Hostel Non LWE (+DH)	95	30	16	2	1	0	0	1	1	1	1	1	16
Total Active BOQ		312		8880	867	157	111	44	312	312	555	312	555	8880

Note: The quantities mentioned are approximate based on the survey of sample sites.

- Actual quantity of hard disk may vary depending on the OEM solution
- Actual number of switches may vary depending on the site
- The total number of UPS may vary based on the site implementation plan,

Bidders must provision for additional requirements of some hardware items, such as Switches, UPS, cables, etc as the above figures are estimated.

The following table provides the calculation for the passive components required for each type of site:

#	Site Type Description	Total Sites	Backup (days)	Indoor Camera #	CAT 6 Cable Req'd. in Meters	# of Box (305 m) CAT 6	PVC Conduit in Meters	6U Wall mounted Racks	9U Rack	Structure d Cable laying in meters	UTP Patch Panel: 24-Port	Cat6 UTP Keystone Jack White	Cat6 UTP Patch Cord - 0.5Mtr	Cat6 UTP Patch Cord - 2Mtr	Cat6 IJTP Patch Cord - 3Mtr
1	Girs/Coed Type 1	5	30	16	960	4	960	1	1	960	2	16	16	16	4
2	Girls/Coed Type 2 (+DH)	111	30	32	1920	7	1920	2	1	1920	3	32	32	32	8
3	Girls/Coed Type 3	44	30	64	3840	13	3840	4	1	3840	5	64	64	64	12
4	Hostel (Model School)	4	30	16	960	4	960	1	1	960	2	16	16	16	4
5	Hostel (NIGS)	19	30	16	960	4	960	1	1	960	2	16	16	16	4
6	Hostel LWE	34	30	16	960	4	960	1	1	960	2	16	16	16	4
7	Hostel Non LWE (+DH)	95	30	16	960	4	960	1	1	960	2	16	16	16	4
Total Passive BOQ		312		8880	532800	1977	532800	555	312	532800	867	8880	8880	8880	2044

**Note: The quantity of passive equipment required may vary from each site based on actual.**

- OEMs must provide for actual amount of cables and other passive components required at each site.
- SITC and related services shall be estimated based on number of cameras to be installed at each type of site. The SITC charges shall be quoted as lumpsum for site, based on the total number of cameras to be installed at the site (eg. Site with 16/32/64 Cameras).
- The above figures for each type of site is estimated and the actual requirement for sites may vary during implementation. The bidders must provision for additional items required in order to ensure proper installation and commissioning at each site.

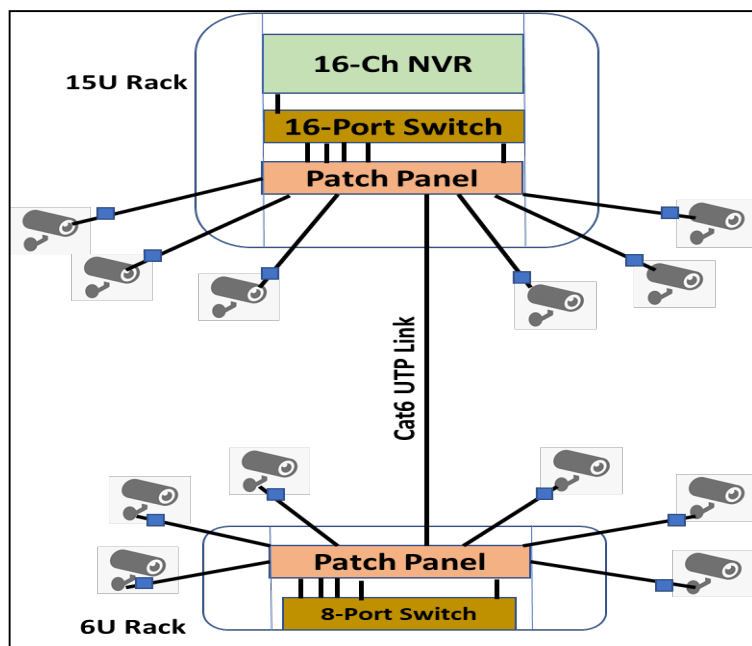
#### 4. Bill of Material for each type of site (16/32/64 Cameras)

The different type of sites covered under the scope of work are standardized based on the number of cameras to be installed at each site. The BOQ specified is the minimum required for sites with 16/32/64 cameras.

##### 2.1.5 Schools/Hostels with 16 Cameras

The scope of work consists of sites, including schools and hostels, with 16 cameras installed. The schematic diagram of such sites are as shown below. The sites shall also have a NVR storage with surveillance grade hard disks, and active/passive networking, Ups, as per the detailed BOQ.

## WEBEL TECHNOLOGY LIMITED



**Fig 1: Site with 16 Cameras**

The detailed Bill of Quantity (BOQ) for the supply and installation of CCTV surveillance system in each of the site categories mentioned above are shown in below table. The following table provides the details of the Scope of Supply and Installation for each site with 16 Cameras to be installed.

Sl.	Item	Quantity	Unit
1	5 MP IP Fixed Bullet Camera (IR Range: 30 mts.)	16	No.
2	16 Channel NVR [2 SATA]	1	No.
3	8TB Enterprise HDD	2	No.
4	1 KVA UPS with 30 mnts backup	1	No.
5	600/650 VA Line Interactive UPS	1	No.
6	43" FHD IPS Display	1	No.
7	L2 Un-managed 16-Port PoE Switch	1	No.
8	L2 Un-managed 8-Port PoE Switch	1	No.
9	Cat6 UTP Cable	960	Mts.
10	6U Wall Mount Indoor Networking Rack	1	No.
11	15 U Rack with accessories	1	No.
12	UTP Patch Panel: 24-Port	2	No.
13	Cat6 UTP Keystone Jack White	16	No.
14	Cat6 UTP Patch Cord - 0.5Mtr	16	No.
15	Cat6 UTP Patch Cord - 2Mtr	16	No.
16	Cat6 IJTP Patch Cord - 3Mtr	4	No.
17	20mm PVC Conduit & accessories	960	Mts.
18	Cable Laying Charges	960	Mts.
19	Supply, Installation, Testing & Commissioning (SITC) of the Surveillance system (16 Cameras)	1	Job
20	Video Monitoring Software	16	License (Included)

Note: The above BOQ for sites with 16 cameras is indicative and are the minimum requirement. The amount of cable

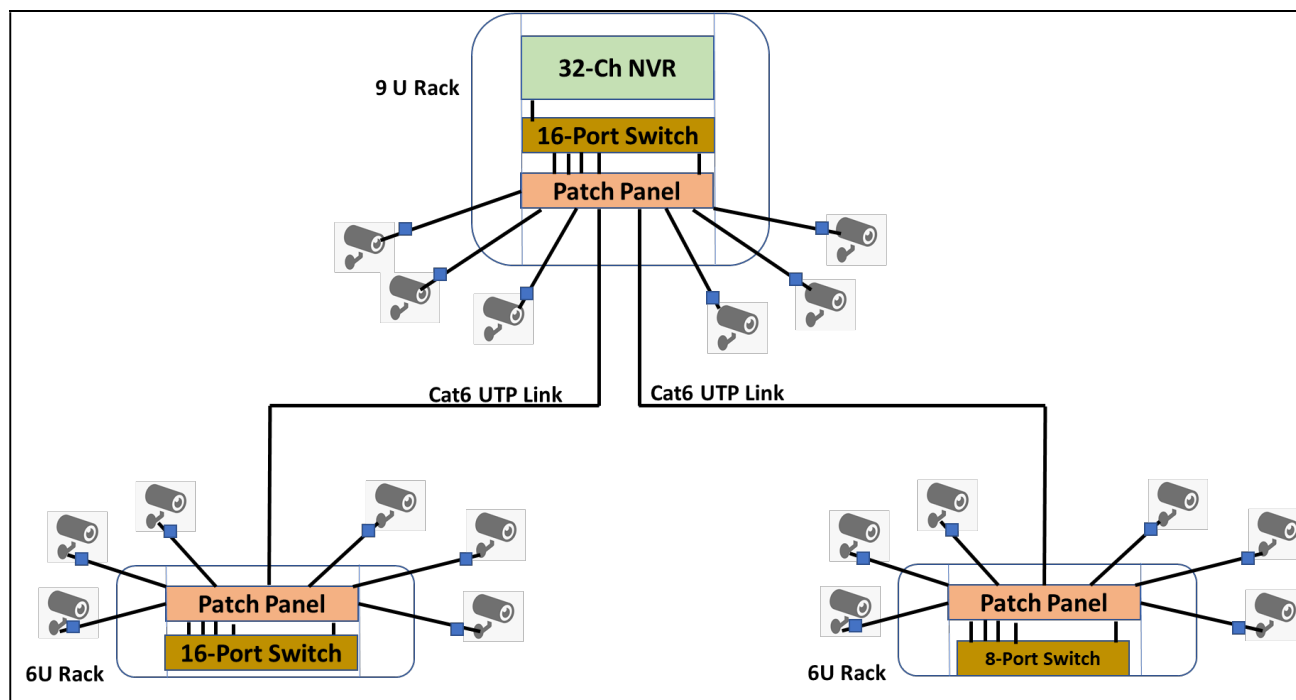
## WEBEL TECHNOLOGY LIMITED

required and services for laying of cables and conduits shall be as per actuals.

### 2.1.6 Schools/Hostels with 32 Cameras

The scope of work consists of sites, including schools with 32 cameras installed, selected on the basis of number of classroom and enrollment. The schematic diagram of such sites are as shown below. The sites shall also have a NVR storage with surveillance grade hard disks, and active/passive networking, Ups, as per the detailed BOQ. The services indicated include supply of 20 mm conduit for structured cabling and laying of cables per meter. The Supply, installation, testing and commissioning services required are also included in the BOQ, based on the total number of cameras installed in each site.

The following diagram provides a schematic diagram of the sites with 32 cameras.



**Fig 2: Site with 32 Cameras**

The detailed Bill of Quantity (BOQ) for the supply and installation of CCTV surveillance system in each of the site categories mentioned above are shown in below table. The following table provides the details of the Scope of Supply and Installation for sites with 32 cameras, including services required.

Sl.	Item	Quantity	Unit
1	5 MP IP Fixed Bullet Camera (IR Range: 30 mts.)	32	No.
2	32 Channel NVR [4 SATA]	1	No.
3	8TB Enterprise HDD	3	No.
4	1 KVA UPS with 30 mnts backup	1	No.
5	600/650 VA Line Interactive UPS	2	No.
6	43" FHD IPS Display	1	No.
7	L2 Un-managed 16-Port PoE Switch	2	No.
8	L2 Un-managed 8-Port PoE Switch	1	No.
9	Cat6 UTP Cable	1920	Mts.
10	6 U Wall Mount Indoor Networking Rack	2	No.
11	15 U Rack with accessories	1	No.
12	UTP Patch Panel: 24-Port	3	No.

## WEBEL TECHNOLOGY LIMITED

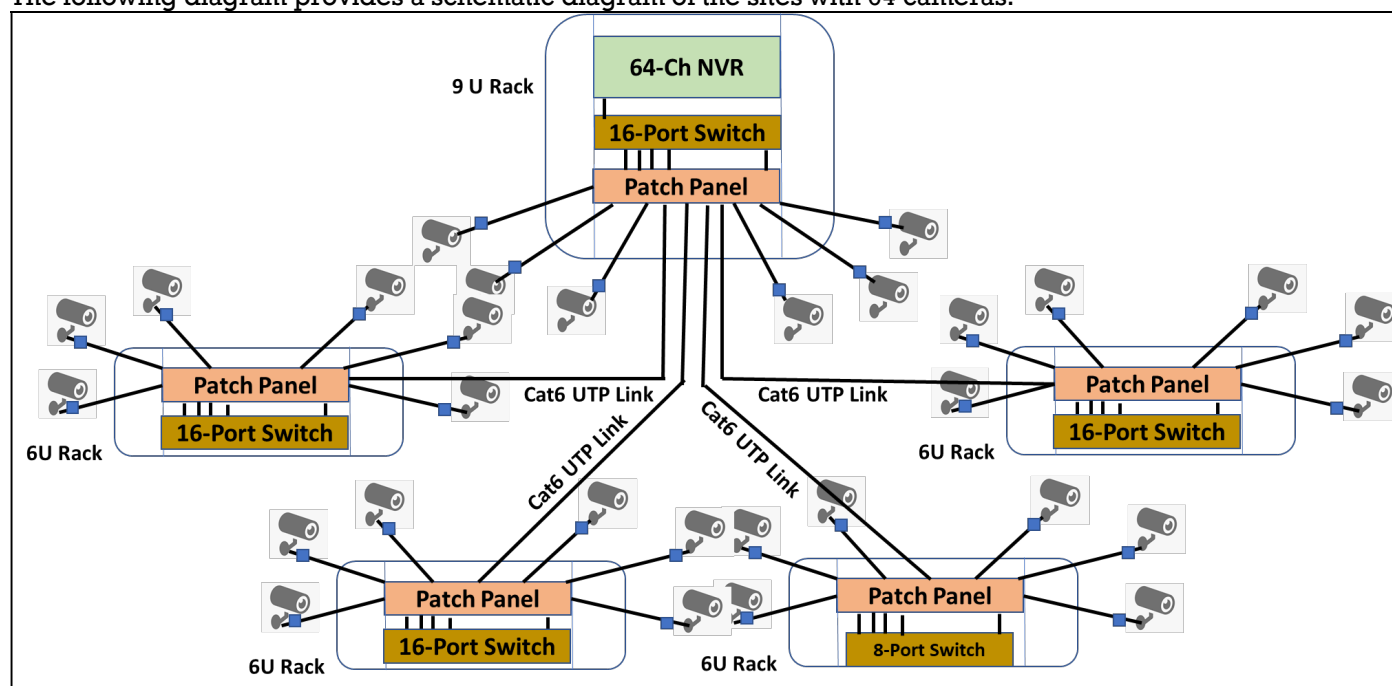
13	Cat6 UTP Keystone Jack White	32	No.
14	Cat6 UTP Patch Cord - 0.5Mtr	32	No.
15	Cat6 UTP Patch Cord - 2Mtr	32	No.
16	Cat6 IJTP Patch Cord - 3Mtr	8	No.
17	20mm PVC Conduit & accessories	1920	Mts.
18	Cable Laying Charges	1920	Mts.
19	Supply, Installation, Testing & Commissioning (SITC) of the Surveillance system (16 Cameras)	1	Job
220	Video Monitoring Software	32	License (Included)

**The above BOQ is for sites with 32 Cameras and the quantities specified are the minimum quantity estimated.**

### 2.1.7 School with 64 Cameras

The scope of work consists of sites, including schools with 64 cameras installed, selected on the basis of number of classroom and enrollment. The schematic diagram of such sites are as shown below. The sites shall also have a NVR storage with surveillance grade hard disks, and active/passive networking, Ups, as per the detailed BOQ. The services indicated include supply of 20 mm conduit for structured cabling and laying of cables per meter. The Supply, installation, testing and commissioning services required are also included in the BOQ, based on the total number of cameras installed in each site.

The following diagram provides a schematic diagram of the sites with 64 cameras.



**Fig 3: Site with 64 Cameras**

The detailed Bill of Quantity (BOQ) for the supply and installation of CCTV surveillance system in each of the site categories mentioned above are shown in below table. The following table provides the details of the Scope of Supply and Installation for sites with 64 cameras, including services required.

Sl.	Item	Quantity	Unit
1	5 MP IP Fixed Bullet Camera (IR Range: 30 mts.)	64	No.
2	64 Channel NVR [8 SATA]	1	No.

## WEBEL TECHNOLOGY LIMITED

3	8TB Enterprise HDD	5	No.
4	1 KVA UPS with 30 mnts backup	1	No.
5	600/650 VA Line Interactive UPS	4	No.
6	43" FHD IPS Display	1	No.
7	L2 Un-managed 16-Port PoE Switch	4	No.
8	L2 Un-managed 8-Port PoE Switch	1	No.
9	Cat6 UTP Cable	3840	Mts.
10	6 U Wall Mount Indoor Networking Rack	4	No.
11	15 U Rack with accessories	1	No.
12	UTP Patch Panel: 24-Port	5	No.
13	Cat6 UTP Keystone Jack White	64	No.
14	Cat6 UTP Patch Cord - 0.5Mtr	64	No.
15	Cat6 UTP Patch Cord - 2Mtr	64	No.
16	Cat6 IJTP Patch Cord - 3Mtr	12	No.
17	20mm PVC Conduit & accessories	3840	Mts.
18	Cable Laying Charges	3840	Mts.
19	Supply, Installation, Testing & Commissioning (SITC) of the Surveillance system (16 Cameras)	1	Job
20	Video Monitoring Software	64	License (Included)

**The above BOQ is for sites with 64 Cameras and the quantities specified are the minimum quantity estimated.**

### 5. Project Implementation Process

6.

The project implementation process to be followed shall include the selected Project Implementation Partner (SI) process for the timely installation of the CCTV Cameras, Storage and other equipment, including passive and active components at site. The SI partner shall also setup the support call center, and the district support centers at the identified locations for delivery of support services as part of the process. The following are the steps of the process to be followed:

- 1) Submission of detailed project plan for each site implementation by SI and approval of the plan by WTL PMU.
- 2) Conducting of Site Survey as per plan
  - a. Submit site survey report with detailed layout diagram for each camera and other equipment at site.
  - b. Submit list of equipment to be delivered and installed at each site.
- 3) Supply and installation at site. (Schools/Hostels)
  - a. Supply the listed items as per BOQ for each site approved.
  - b. Install the equipment (Active/Passive) and other site work as per plan. Label each item with "Unique Identification Code" for tracking.
  - c. Install the Storage and Video management Software and demonstrate the functioning of the site, for each camera and the storage. Update VMS with the camera identification number for easy tracking.
  - d. Submit list of equipment (Active/Passive) installed at each site with "Unique identification" number for tracking of each item.
  - e. Update the installation database for future reference and support requirement.
- 4) Setup Call Center at central location (Kolkata) for reporting of issues/problems from site.
  - a. Provision trained manpower for call center support

## WEBEL TECHNOLOGY LIMITED

- b. Provision for infrastructure and Support management software for call tracking, issue tracking, assignment of calls to field, status updation of repair/replacement.
  - c. Reporting of support status on weekly basis as per SLA.
- 5) District Support Infrastructure at each district of West Bengal covered in the scope of each zone. The bidder must:
- a. Setup service center in the district covered under each zone, if not existing, within the timeline specified.
  - b. Deploy technical support personnel (2 dedicated engineers per zone) and adequate spares in each district/Zone as per scope.

The SI implementation partner shall be required to perform the implementation work as per the agreed implementation plan approved by the PMU. The details of the services to be provided and the SLAs shall be finalized before execution.

### 7. Support Services Required

**The support services proposed to be setup by SI is the key for the successful implementation of the project and management of operations over a period of 3 years or more. The current scope of the proposal, encompassed supply and installation of CCTV cameras at site, with three (3) years comprehensive warranty support and CAMC for additional two years (optional).**

#### 2.1.8 Call center support operations

A centralized call center with a toll free number shall be setup in Kolkata by the SI Partner, to support the maintenance of the sites located all across West Bengal. The support services management will be managed through the Support Call center and will have required infrastructure and software necessary for service management. The Center will manage the inventory records of all items and spares used in the project and track the status of each item through the support system software.

The Support call center shall be available to receive calls on email/telephone. The call center will have one Manager and call center staff on rotation basis for high availability operation. Call center staff to attend the call and perform the following:

- ✓ Identify site (School/Hostel) and register complaint on system
- ✓ Identify faulty asset from asset code reported and update system
- ✓ Assign call to respective field engineer for replacement, if camera is faulty.
- ✓ If other Active component is faulty, assign stock from central location for dispatch to field location.
- ✓ Update and monitor delivery of replacement stock to field engineer.
- ✓ Monitor dispatch of faulty item from field to repair center.
- ✓ Update repair status and replenish stock status on completion of repair.
- ✓ Close call and update SLA compliance data

#### 2.1.9 Repair Center

Repair center will be available from OEMs in Kolkata for rectification of faults and will ensure. Repair center must complete proper repair and send back the item within 7 days to ensure healthy stock status, as part of SLA. In case of any delay, the OEM must arrange for replacement of the faulty item.

#### 2.1.10 Service & Support Infrastructure Setup in West Bengal

The successful bidder (contractor) shall have the required services and support setup, with qualified manpower



## **WEBEL TECHNOLOGY LIMITED**

(minimum 2 engineers per zone) and adequate spares to ensure delivery of the support services as per the SLA required, across West Bengal. Details of existing setup, manpower and location, must be provided with documentary proof, for the purpose of technical evaluation of bid. In case the bidders do not have the district level support setup in any zone, the same must be setup within 30 days of award of contract for each zone.

## WEBEL TECHNOLOGY LIMITED

### 3 Tender Schedule

Sl. No.	Particulars	Date & Time
1	Date of uploading of N.I.T. & other Documents (online) (Publishing Date)	26.01.2022
2	Documents download/sale start date (Online)	26.01.2022
3	Last Date and time of sending the queries (Offline)	01.02.2022 at 15.00 hrs.
4	Pre Bid Meeting at WTL Office (Off Line)	02.02.2022 at 12.00 hrs.
5	Corrigendum, if any will be published (On Line)	-
6	Bid Submission start date & time (On line)	11.02.2022 at 14.00 hrs.
7	Last Date & time of submission of Earnest Money Deposit & submission of remittance details	Before Uploading of Tender
8	Last Date & time of submission of Tender Fee & submission of remittance details	Before Uploading of Tender
9	Bid Submission closing date & time (On line)	16.02.2022 at 12.00 hrs.
10	Bid opening date & time for Technical Proposals (Online)	18.02.2022 at 12.00 hrs.
11	Date of uploading the final list of Technically Qualified Bidder (online) after disposal of appeals, if any	-
12	Date for opening of Financial Bid (Online)	-

### 8. Project Timeline

**The project is divided into 6 zones for the purpose of faster implementation and better monitoring and management. It is mandated that any successful bidder may be allowed to implement maximum 3 Zones out of the 6 zones specified, for the purpose of the faster and better implementation management. The following is the timeline expected for the implementation process:**

- **The project is estimated to be completed within 6 months from the date of tendering.**
- **The implementation of project for each zone shall be conducted simultaneously with other zones**
  - **The site survey and the project management activities must commence with the award of the contract for each zone.**
  - **The supply and delivery of equipment must be completed within 6 weeks from date of award of contract**
  - **The installation process for each zone is expected to be completed within 8-10 weeks (2 months) for each zone.**
  - **The project plan shown below is indicative and shall change based on the award of each zone to various bidders.**

# WEBEL TECHNOLOGY LIMITED

CCTV Surveillance Implementation in Schools	M1				M2				M3				M4				M5				M6			
	W1	W2	W3	W4	W5	W6	W7	W8	W9	W10	W11	W12	W13	W14	W15	W16	W17	W18	W19	W20	W21	W22	W23	W24
<b>Activity Details</b>																								
<b>Tendering Process &amp; Award</b>																								
Tender Preparation & Upload																								
Bid Submission																								
Technical Evaluation																								
Contract Finalization																								
<b>Project Implementation</b>																								
Site Survey (All Zones)																								
Delivery of Equipment (All zones)																								
Site Preparation (All zones)																								
Support Center setup (All Zones)																								
<b>Zone 1 Installation</b>																								
<b>Zone 2 Installation</b>																								
<b>Zone 3 Installation</b>																								
<b>Zone 4 Installation</b>																								
<b>Zone 5 Installation</b>																								
<b>Zone 6 Installation</b>																								

Note: The above plan is tentative and indicates that the project must be completed within 6 months from the date of tendering.

# WEBEL TECHNOLOGY LIMITED

## SECTION – C

### Zone-Wise BoQ & Scope

#### **4 Zone wise Scope & BoQ**

The project has been divided into 6 zones for faster implementation and better project management. This section details the scope of the project for each zone, as shown below:

Sl. No	Zone	Total Sites	School 16 Cam	School 32 Cam	School 64 Cam	Hostel 16 Cam	Total Camera
1	Zone 1S	89	0	6	2	81	1616
2	Zone 2W	38	0	27	9	2	1472
3	Zone 3C	30	0	19	11	0	1312
4	Zone 4C	39	0	24	11	4	1536
5	Zone 5N	44	5	21	7	11	1376
6	Zone 6W	72	0	14	4	54	1568
	<b>Total</b>	<b>312</b>	<b>5</b>	<b>111</b>	<b>44</b>	<b>152</b>	<b>8880</b>

Each of the zones mentioned above have a different BoQ, and shall be implemented as an independent zone by the bidder who has been awarded the zone. This section provides the scope of work for each zone and the zone-wise BoQ.

Note:

- 1) The bidders must carefully study the scope of work for each zone, for supply and installation, implementation services and support services required for 3 years under comprehensive onsite warranty maintenance.
- 2) Each bidder must quote for all 6 zones specified under the scope of the project. Any bidder not bidding for all the zones shall be disqualified and the bid shall be rejected as a whole.
- 3) The maximum number of zones to be awarded to L1 bidder for each zone, shall be 3. WTL may, at their discretion, allow additional zones for implementation, to L1 bidders,
- 4) If any bidder is L1 in more than 3 zones, the bidder shall have the right to choose maximum 3 zones for implementation.
- 5) Zones not chosen by the L1 bidder, shall be awarded to L2 bidder for that zone, provided the L2 bidder matches the L1 price quoted for the zone. In case no bidder agrees to match the L1 price for a particular zone, WTL may, at their discretion invite the L1 bidder to take up implementation of the zone, only as an exception.
- 6) Bidders must sign an undertaking to accept the implementation of zones for which they are declared L1, failing which, their bid security (EMD) may be forfeited.

#### **9. Zone 1S – BoM**

The Zone 1 scope of work shall comprise of implementation of CCTV cameras in schools and hostels as per the details provided in Table 2.1 above. The total number of sites in Zone 1 is 89, comprising of 81 hostels with 16 Cameras and associated equipment and networking, 2 schools with 64 Cameras and 6 schools with 32 cameras. The districts covered in Zone 1 are:

- Jhargram
- Purba Medinipur
- Paschim Medinipur.

The detailed list of sites in Zone 1 are provided in Section - U

The BoQ for Zone 1S are as shown in the table below:

## WEBEL TECHNOLOGY LIMITED

Sl.	Item	Quantity	Unit
1	5 MP IP Fixed Bullet Camera (IR Range: 30 mts.)	1616	No.
2	64 Channel NVR [8 SATA]	2	No.
3	32 Channel NVR [4 SATA]	6	No.
4	16 Channel NVR [2 SATA]	81	No.
5	8TB Enterprise HDD	190	No.
6	1 KVA UPS with 30 mnts backup	89	No.
7	600/650 VA Line Interactive UPS	101	No.
8	43" FHD IPS Display	89	No.
9	L2 Un-managed 16-Port PoE Switch	101	No.
10	L2 Un-managed 8-Port PoE Switch	89	No.
11	Cat6 UTP Cable	96960	Mts.
12	6 U Wall Mount Indoor Networking Rack	101	No.
13	15 U Rack with accessories	89	No.
14	UTP Patch Panel: 24-Port	190	No.
15	Cat6 UTP Keystone Jack White	1616	No.
16	Cat6 UTP Patch Cord - 0.5Mtr	1616	No.
17	Cat6 UTP Patch Cord - 2Mtr	1616	No.
18	Cat6 IJTP Patch Cord - 3Mtr	396	No.
19	20mm PVC Conduit & accessories	96960	Mts.
20	Cable Laying Charges	96960	Mts.
21	Supply, Installation, Testing & Commissioning (SITC) (site w/16 Camera)	81	Job
22	Supply, Installation, Testing & Commissioning (SITC) (site w/32 Camera)	6	Job
23	Supply, Installation, Testing & Commissioning (SITC) (site w/64 Camera)	2	Job

### Note:

- 1) Technical specifications for each type of equipment to be supplied are provided in Section O.
- 2) All equipment shall be provided with 3 years onsite warranty support adhering to the SLA defined in the tender document.
- 3) The scope of supply and services for each zone shall be common as detailed in Section B, shall include setting up of central call center, district support center with support manpower and spares and PMU unit for the duration of the project (3 years) .
- 4) Bidders must undertake to setup service facilities for timely support as per SLAs, in each district covered under this zone.
- 5) SITC charges must be indicated/quoted based on the number of cameras to be installed at each site, as per the BOQ for the zone.

### 10. Zone 2W – BOM

The Zone 2 scope of work shall comprise of implementation of CCTV cameras in schools and hostels as per the details provided in Table 2.1 above. The total number of sites in Zone 2 are 38, comprising of 2 hostels with 16 Cameras and associated equipment and networking, 27 schools with 32 Cameras and 9 schools with 64 cameras. The districts covered in Zone 2 are:

- Murshidabad

## WEBEL TECHNOLOGY LIMITED

- Nadia
- Purba Bardhaman.

The detailed list of sites in Zone 1 are provided in Section - U.

The BoQ for Zone 2W are as shown in the table below:

Sl.	Item	Quantity	Unit
1	5 MP IP Fixed Bullet Camera (IR Range: 30 mts.)	1472	No.
2	64 Channel NVR [8 SATA]	9	No.
3	32 Channel NVR [4 SATA]	27	No.
4	16 Channel NVR [2 SATA]	2	No.
5	8TB Enterprise HDD	130	No.
6	1 KVA UPS with 30 mnts backup	38	No.
7	600/650 VA Line Interactive UPS	92	No.
8	43" FHD IPS Display	38	No.
9	L2 Un-managed 16-Port PoE Switch	92	No.
10	L2 Un-managed 8-Port PoE Switch	38	No.
11	Cat6 UTP Cable	88320	Mts.
12	6U Wall Mount Indoor Networking Rack	92	No.
13	15 U Rack with accessories	38	No.
14	UTP Patch Panel: 24-Port	130	No.
15	Cat6 UTP Keystone Jack White	1472	No.
16	Cat6 UTP Patch Cord - 0.5Mtr	1472	No.
17	Cat6 UTP Patch Cord - 2Mtr	1472	No.
18	Cat6 IJTP Patch Cord - 3Mtr	332	No.
19	20mm PVC Conduit & accessories	88320	Mts.
20	Cable Laying Charges	88320	Mts.
21	Supply, Installation, Testing & Commissioning (SITC) (site w/16 Camera)	2	Job
22	Supply, Installation, Testing & Commissioning (SITC) (site w/32 Camera)	27	Job
23	Supply, Installation, Testing & Commissioning (SITC) (site w/64 Camera)	9	Job

Note:

- 1) Technical specifications for each type of equipment to be supplied are provided in Section O.
- 2) All equipment shall be provided with 3 years onsite warranty support adhering to the SLA defined in the tender document.
- 3) The scope of supply and services for each zone shall be common as detailed in Section B, shall include setting up of central call center, district support center with support manpower and spares and PMU unit for the duration of the project (3 years) .
- 4) Bidders must undertake to setup service facilities for timely support as per SLAs, in each district covered under this zone.
- 5) SITC charges must be indicated/quoted based on the number of cameras to be installed at each site, as per the BOQ for the zone.

## WEBEL TECHNOLOGY LIMITED

### 11. Zone 3C-BOM

The Zone 3 scope of work shall comprise of implementation of CCTV cameras in schools and hostels as per the details provided in Table 2.1 above. The total number of sites in Zone 3C are 30, comprising of associated equipment and networking in 19 schools with 32 Cameras and 11 schools with 64 cameras. The districts covered in Zone 3 are:

- Kolkata
- North 24 Parganas

The detailed list of sites in Zone 1 are provided in Section - U

The BoQ for Zone 3C are as shown in the table below:

Sl.	Item	Quantity	Unit
1	5 MP IP Fixed Bullet Camera (IR Range: 30 mts.)	1312	No.
2	64 Channel NVR [8 SATA]	11	No.
3	32 Channel NVR [4 SATA]	19	No.
4	8TB Enterprise HDD	112	No.
5	1 KVA UPS with 30 mnts backup	30	No.
6	600/650 VA Line Interactive UPS	82	No.
7	43" FHD IPS Display	30	No.
8	L2 Un-managed 16-Port PoE Switch	82	No.
9	L2 Un-managed 8-Port PoE Switch	30	No.
10	Cat6 UTP Cable	78720	Mts.
11	6U Wall Mount Indoor Networking Rack	82	No.
12	15 U Rack with accessories	30	No.
13	UTP Patch Panel: 24-Port	112	No.
14	Cat6 UTP Keystone Jack White	1312	No.
15	Cat6 UTP Patch Cord - 0.5Mtr	1312	No.
16	Cat6 UTP Patch Cord - 2Mtr	1312	No.
17	Cat6 IJTP Patch Cord - 3Mtr	284	No.
18	20mm PVC Conduit & accessories	78720	Mts.
19	Cable Laying Charges	78720	Mts.
20	Supply, Installation, Testing & Commissioning (SITC) (site w/32 Camera)	19	Job
21	Supply, Installation, Testing & Commissioning (SITC) (site w/64 Camera)	11	Job

Note:

- 1) Technical specifications for each type of equipment to be supplied are provided in Section O
- 2) All equipment shall be provided with 3 years onsite warranty support adhering to the SLA defined in the tender document.
- 3) The scope of supply and services for each zone shall be common as detailed in Section B, shall include setting up of central call center, district support center with support manpower and spares and PMU unit for the duration of the project (3 years) .
- 4) Bidders must undertake to setup service facilities for timely support as per SLAs, in each district covered under this zone.
- 5) SITC charges must be indicated/quoted based on the number of cameras to be installed at each site, as per the BOQ for the zone.

# WEBEL TECHNOLOGY LIMITED

## 12. Zone 4C – BOM

The Zone 4 scope of work shall comprise of implementation of CCTV cameras in schools and hostels as per the details provided in Table 2.1 above. The total number of sites in Zone 4 are 39, comprising of 4 Hostels with 16 Cameras and associated equipment and networking, 24 schools with 32 Cameras and 11 schools with 64 cameras. The districts covered in Zone 4C are:

- Howrah
- South 24 Parganas
- Hoogly

The detailed list of sites in Zone 4 are provided in Section - U.

The BoQ for Zone 4C are as shown in the table below:

Sl.	Item	Quantity	Unit
1	5 MP IP Fixed Bullet Camera (IR Range: 30 mts.)	1536	No.
2	64 Channel NVR [8 SATA]	11	No.
3	32 Channel NVR [4 SATA]	24	No.
4	16 Channel NVR [2 SATA]	4	No.
5	8TB Enterprise HDD	135	No.
6	1 KVA UPS with 30 mnts backup	39	No.
7	600/650 VA Line Interactive UPS	96	No.
8	43" FHD IPS Display	39	No.
9	L2 Un-managed 16-Port PoE Switch	96	No.
10	L2 Un-managed 8-Port PoE Switch	39	No.
11	Cat6 UTP Cable	92160	Mts.
12	6U Wall Mount Indoor Networking Rack	96	No.
13	15 U Rack with accessories	39	No.
14	UTP Patch Panel: 24-Port	135	No.
15	Cat6 UTP Keystone Jack White	1536	No.
16	Cat6 UTP Patch Cord - 0.5Mtr	1536	No.
17	Cat6 UTP Patch Cord - 2Mtr	1536	No.
18	Cat6 IJTP Patch Cord - 3Mtr	340	No.
19	20mm PVC Conduit & accessories	92160	Mts.
20	Cable Laying Charges	92160	Mts.
21	Supply, Installation, Testing & Commissioning (SITC) (site w/16 Camera)	4	Job
22	Supply, Installation, Testing & Commissioning (SITC) (site w/32 Camera)	24	Job
23	Supply, Installation, Testing & Commissioning (SITC) (site w/64 Camera)	11	Job

Note:

- 1) Technical specifications for each type of equipment to be supplied are provided in Section O.
- 2) All equipment shall be provided with 3 years onsite warranty support adhering to the SLA defined in the tender document.
- 3) The scope of supply and services for each zone shall be common as detailed in Section B, shall include setting up of central call center, district support center with support manpower and spares and PMU unit for the duration of the project (3 years) .



## WEBEL TECHNOLOGY LIMITED

- 4) Bidders must undertake to setup service facilities for timely support as per SLAs, in each district covered under this zone.
- 5) SITC charges must be indicated/quoted based on the number of cameras to be installed at each site, as per the BOQ for the zone.

### 13. Zone 5N – BOM

The Zone 5N scope of work shall comprise of implementation of CCTV cameras in schools and hostels as per the details provided in Table 2.1 above. The total number of sites in Zone 5 are 44, comprising of 11 Hostels with 16 Cameras and associated equipment and networking, 5 Schools with 16 cameras, 21 schools with 32 Cameras and 7 schools with 64 cameras. The districts covered in Zone 3 are:

- Alipurduar
- Coochbehar
- Dakshin Dinajpur
- Uttar Dinajpur
- Siliguri
- Kalimpong
- Darjeeling
- Malda
- Jalpaiguri

The detailed list of sites in Zone 5N are provided in Section - U.

The BoQ for Zone 5N are as shown in the table below:

Sl.	Item	Quantity	Unit
1	5 MP IP Fixed Bullet Camera (IR Range: 30 mts.)	1376	No.
2	64 Channel NVR [8 SATA]	7	No.
3	32 Channel NVR [4 SATA]	21	No.
4	16 Channel NVR [2 SATA]	16	No.
5	8TB Enterprise HDD	130	No.
6	1 KVA UPS with 30 mnts backup	44	No.
7	600/650 VA Line Interactive UPS	86	No.
8	43" FHD IPS Display	44	No.
9	L2 Un-managed 16-Port PoE Switch	86	No.
10	L2 Un-managed 8-Port PoE Switch	44	No.
11	Cat6 UTP Cable	82560	Mts.
12	6 U Wall Mount Indoor Networking Rack	86	No.
13	15 U Rack with accessories	44	No.
14	UTP Patch Panel: 24-Port	130	No.
15	Cat6 UTP Keystone Jack White	1376	No.
16	Cat6 UTP Patch Cord - 0.5Mtr	1376	No.
17	Cat6 UTP Patch Cord - 2Mtr	1376	No.
18	Cat6 UTP Patch Cord - 3Mtr	316	No.
19	20mm PVC Conduit & accessories	82560	Mts.
20	Cable Laying Charges	82560	Mts.

## WEBEL TECHNOLOGY LIMITED

21	Supply, Installation, Testing & Commissioning (SITC) (site w/16 Camera)	16	Job
22	Supply, Installation, Testing & Commissioning (SITC) (site w/32 Camera)	21	Job
23	Supply, Installation, Testing & Commissioning (SITC) (site w/64 Camera)	7	Job

Note:

- 1) Technical specifications for each type of equipment to be supplied are provided in Section O.
- 2) All equipment shall be provided with 3 years onsite warranty support adhering to the SLA defined in the tender document.
- 3) The scope of supply and services for each zone shall be common as detailed in Section B, shall include setting up of central call center, district support center with support manpower and spares and PMU unit for the duration of the project (3 years) .
- 4) Bidders must undertake to setup service facilities for timely support as per SLAs, in each district covered under this zone.
- 5) SITC charges must be indicated/quoted based on the number of cameras to be installed at each site, as per the BOQ for the zone.

### 14. Zone 6W – BOM

The Zone 6 scope of work shall comprise of implementation of CCTV cameras in schools and hostels as per the details provided in Table 2.1 above. The total number of sites in Zone 6 are 72, comprising of associated equipment and networking in, 54 hostels with 16 cameras, 14 schools with 32 Cameras and 4 schools with 64 cameras. The districts covered in Zone 6 are:

- Bankura
- Birbhum
- Purulia
- Paschim Bardhaman

The detailed list of sites in Zone 1 are provided in Section - U.

The BoQ for Zone 6W are as shown in the table below:

Sl.	Item	Quantity	Unit
1	5 MP IP Fixed Bullet Camera (IR Range: 30 mts.)	1568	No.
2	64 Channel NVR [8 SATA]	4	No.
3	32 Channel NVR [4 SATA]	14	No.
4	16 Channel NVR [2 SATA]	54	No.
5	8TB Enterprise HDD	170	No.
6	1 KVA UPS with 30 mnts backup	72	No.
7	600/650 VA Line Interactive UPS	98	No.
8	43" FHD IPS Display	72	No.
9	L2 Un-managed 16-Port PoE Switch	98	No.
10	L2 Un-managed 8-Port PoE Switch	72	No.
11	Cat6 UTP Cable	94080	Mts.
12	6U Wall Mount Indoor Networking Rack	98	No.
13	15 U Rack with accessories	72	No.

## WEBEL TECHNOLOGY LIMITED

14	UTP Patch Panel: 24-Port	170	No.
15	Cat6 UTP Keystone Jack White	1568	No.
16	Cat6 UTP Patch Cord - 0.5Mtr	1568	No.
17	Cat6 UTP Patch Cord - 2Mtr	1568	No.
18	Cat6 IJTP Patch Cord - 3Mtr	376	No.
19	20mm PVC Conduit & accessories	94080	Mts.
20	Cable Laying Charges	94080	Mts.
21	Supply, Installation, Testing & Commissioning (SITC) (site w/16 Camera)	54	Job
22	Supply, Installation, Testing & Commissioning (SITC) (site w/32 Camera)	14	Job
23	Supply, Installation, Testing & Commissioning (SITC) (site w/64 Camera)	4	Job

Note:

- 1) Technical specifications for each type of equipment to be supplied are provided in Section O
- 2) All equipment shall be provided with 3 years onsite warranty support adhering to the SLA defined in the tender document.
- 3) The scope of supply and services for each zone shall be common as detailed in Section B, shall include setting up of central call center, district support center with support manpower and spares and PMU unit for the duration of the project (3 years) .
- 4) Bidders must undertake to setup service facilities for timely support as per SLAs, in each district covered under this zone.
- 5) SITC charges must be indicated/quoted based on the number of cameras to be installed at each site, as per the BOQ for the zone.

### 15. Support Services Scope – All Zones

**The support services proposed to be setup by SI/Bidder is the key for the successful implementation of the project and management of operations over a period of 3 years or more. The current scope of the proposal, encompassed supply and installation of CCTV cameras at site, with three years warranty and onsite support for duration of the 3 years warranty period. The following are the key requirements for bidders' scope for each zone:**

- 1) **Setup of call center at Kolkata for each zone. Bidders executing multiple zones may setup a single call center setup, with call center manpower dedicated for each zone.**
- 2) **OEM Repair center/Depot – Centralized OEM repair center/depot for replacement of faulty hardware equipment within the specified SLA period, in Kolkata.**
- 3) **District Support Center – for each zone, with required manpower and spares for onsite support, as per SLA.**

**The scope of work for support services shall be applicable for each zone, and successful bidders for each zone must have the setup as per the scope of work for each zone. Detailed information for each of the above must be submitted along with the bid.**

#### 4.1.1 Call center support operations

A centralized call center with a toll free number shall be setup in Kolkata by the SI Partner for each zone to be executed, to support the maintenance of the sites in each zone, located all across West Bengal. The support services

## **WEBEL TECHNOLOGY LIMITED**

management will be controlled through the Support Call center and will have required infrastructure and software necessary for service management. The Center will manage the inventory records of all items and spares used in the project and track the status of each item through the support system software.

The Support call center shall be available to receive calls on email/telephone. The call center will have one Manager and call center staff (one for each zone) on rotation basis for high availability operation. Call center staff to attend the call and perform the following:

- ✓ Identify site (School/Hostel) and register complaint on system
- ✓ Identify faulty asset from asset code reported and update system
- ✓ Assign call to respective field engineer for replacement, if camera is faulty.
- ✓ If other Active component is faulty, assign stock from central location for dispatch to field location.
- ✓ Update and monitor delivery of replacement stock to field engineer.
- ✓ Monitor dispatch of faulty item from field to repair center.
- ✓ Update repair status and replenish stock status on completion of repair.
- ✓ Close call and update SLA compliance data

### **4.1.2 Repair Center**

Bidders must ensure that repair center will be available from OEMs in Kolkata for rectification of faults and will ensure. Repair center must complete proper repair and send back the item within 7 days to ensure healthy stock status, as part of SLA. In case of any delay, the OEM must arrange for replacement of the faulty item. The details of the OEM repair center shall be provided, as part of the bidding document, for evaluation.

### **4.1.3 Service & Support Infrastructure Setup in each zone.**

The successful bidder(s) (contractor) shall have the required services and support setup, with qualified manpower and adequate spares to ensure delivery of the support services as per the SLA required, across West Bengal.

- Bidders are required to have one service setup at district level in each zone. The service center in each zone must have 2 dedicated support engineers for the project, and should have adequate spares in stock for onsite maintenance support for the 3 years comprehensive warranty support as per SLA.
- Details of existing setup, manpower and location, must be provided with documentary proof, for the purpose of technical evaluation of bid.
- In case the bidders do not have the district level support setup in each zone, the same must be setup within 30 days of award of contract for each zone. An undertaking on the bidders' letterhead to setup the support center, within 30 days of award of the contract, must be submitted along with the bid.

The scope for support services is critical for the success of the project and shall be part of the technical evaluation of the bids.

# WEBEL TECHNOLOGY LIMITED

## **SECTION – D** **ELIGIBILITY CRITERIA**

### **5 BIDDERS' ELIGIBILITY CRITERIA**

1. The bidder must be a company registered under Companies Act, 1956/2013 or Partnership or LLP or OPC or Proprietary Firm. Documentary (Certificate of incorporation/Relevant document) evidence to be submitted.
2. The bidder must be a System Integrator in IT/ ITeS/ ICT sector. Relevant document to be submitted.
3. The bidder should have been operating for the last 10 years in India. Certificate of Incorporation and/ or Certificate of Commencement of Business issued by the Registrar of Companies/ Partnership Registration/ sole proprietorship registration under the Shops & Establishments Act to be submitted.
4. The bidder must have their Registered/ Branch office in West Bengal. Valid trade license and local GST Registration Certificate are to be submitted
5. The bidder should have valid GST Registration Certificate & PAN. Bidder shall have to submit photocopy of the documents.
6. Bidder should have own local call center number (Undertaking letter should be submitted from the bidders). OEM Call Centre number will not be treated as bidder's call center number. Call Center details for bidder with number & details of call center infrastructure (hardware/Software) and manpower must be submitted. Bidder shall have to submit the Complain/Call escalation matrix in their own letterhead with undertaking.
7. Bidder should have own support center in each zone (Undertaking letter should be submitted from the bidders). The support center in each zone must have minimum 2 onsite support engineers with more than 3 years of experience in hardware/software and networking support. Bidders must submit details of support center infrastructure (hardware/Software) and manpower details for each zone separately. Bidder(s) without the necessary district level support center in each zone, must submit an undertaking on their own letterhead, to complete the setup within 30 days of signing of contract for each zone.
8. The bidder shall have executed "Similar Nature" of single order an amount not less than **Rs.10.00 (Ten) Crores** in last 05 (Five) financial years (considering FY – 2015-2016, 2016-2017, 2017-18, 2018-19, 2019-20) in Government Department/PSU/Autonomous Body. References order copy with the completion certificate for the project to be provided.

OR

The bidder shall have executed "Similar Nature" of two orders in total amount not less than **Rs.11.00 (Eleven) Crores** in last 05 (Five) financial years (considering FY – 2015-2016, 2016-2017, 2017-18, 2018-19, 2019-20) in Government Department/PSU/Autonomous Body. References order copy with the completion certificate for the project to be provided.

OR

The bidder shall have executed "Similar Nature" of three orders in total amount not less than **Rs.12.00 (Twelve) Crores** in last 05 (Five) financial years (considering FY – 2015-2016, 2016-2017, 2017-18, 2018-19, 2019-20) in Government Department/PSU/Autonomous Body. References order copy with the completion certificate for the project to be provided.

9. The bidder must have completed Supply, Installation, Testing and Commissioning of any CCTV Surveillance project, worth all-inclusive cumulative amount of Rs. **1.00 (One crore)** only, in any year during last five financial years for any Govt. Departments or Public Sector Undertakings, in India.
10. The bidder should have a minimum **annual turnover** of not less than Rs. **10.00 (Ten) Crores** in the last financial year (2019-20)). Bidder shall have to submit Audited Balance Sheet / Audited Accounts / Auditor Certificate in support of their claim.
11. The bidder should have a minimum total **annual turnover** of not less than **Rs. 35.00 (Thirty Five) Crores** in

## **WEBEL TECHNOLOGY LIMITED**

the last 03 (Three) financial years (considering FY –2017-18, 2018-19, 2019-20)). Bidder shall have to submit Audited Balance Sheet / Audited Accounts / Auditor Certificate in support of their claim.

12. Bidder should have Positive net worth for last 05 (Five) financial years, and submit statement certified by auditor along with bid.
13. The bidder shall have Quality Certificate (ISO 9001:2015). The bidder has to ensure that the certificate remains valid during the life cycle of the project. Copy of Certificate to be submitted.
14. The bidder must submit the Manufacturers Authentication Form (MAF) for Camera, Storage, Computer, Display, Networking items (Active & Passive) and UPS as per prescribed format enclosed (Section - P), along with Technical Compliance statements. Without these documents from the OEMs, the offer will be treated as non-responsive and summarily rejected.
15. The bidder shall not have been blacklisted by any State/Central Government or PSU Organization or bilateral / multilateral funding agencies for breach of ethical conduct or fraudulent practices as on date of submission of the proposal (as per DIT guidance note issued on 26-Dec-2011). Declaration on bidder's letter head to be submitted.
16. The bidder shall submit Bid Form (Section – G) duly signed by the authorized signatory of the company as per the format enclosed. Deviation in format may not be accepted.
17. Bidder shall submit NIT Declaration (Section – R) duly signed by the authorized signatory of the company as per the format. Deviation in format may not be accepted.

# WEBEL TECHNOLOGY LIMITED

## SECTION – E

### INSTRUCTIONS TO BIDDER

#### 16. DEFINITIONS

In this document, the following terms shall have following respective meanings:

**“Agreement”** means the Agreement to be signed between the successful bidder and WTL including all attachments, appendices, all documents incorporated by reference thereto together with any subsequent modifications, the RFP, the bid offer, the acceptance and all related correspondences, clarifications, presentations.

**“Acceptance Test Document”** means a document, which defines procedures for testing the functioning of installed system. The document will be finalized with the contractor within 7 days of issuance of the Letter of Award.

**“Bidder”** means any firm offering the solution(s), service(s) and /or materials required in the RFP. The word Bidder when used in the pre award period shall be synonymous with Bidder, and when used after award of the Contract shall mean the successful Bidder.

**“Contract”** is used synonymously with Agreement.

**“Contract Price”** means the price to be paid to the Contractor for providing the Solution, in accordance with the payment terms.

**“Contractor”** means the Bidder whose bid to perform the Contract has been accepted by Tender Committee and is named as such in the Letter of Award.

**“Default Notice”** mean the written notice of Default of the Agreement issued by one Party to the other.

**“Installation”** means installation of supplied Hardware & Software.

**“Fraudulent Practice”** means a misrepresentation of facts in order to influence a procurement process or the execution of a Contract and includes collusive practice among Bidders (prior to or after Bid submission) designed to establish Bid prices at artificial noncompetitive levels and to deprive WTL and eventually Departments of Gov. of W. Bengal of the benefits of free and open competition.

**“GoI”** shall stand for the Government of India.

**“GoWB”** means Government of West Bengal.

**“DoSE”** – Directorate of School Education

**“SE”** - School Education

**“Personnel”** means persons hired by the Bidder as employees and assigned to the performance of the Infrastructure Solution or any part thereof.

**“Similar Nature of Work”** means Works entailing completion of a project in the field of CCTV / VSS / Surveillance / IT / ITeS/ ICT/ Telecom for any Govt. Departments or Public Sector Undertakings.

**“Project”** Supply, Installation, Testing, Commissioning (SITC) and Maintenance of CCTV surveillance systems in Govt. sponsored / aided Girls’ and Co-Ed Secondary/Higher Secondary Schools and Girls’ Hostels in West Bengal, Under Directorate of School Education, Govt. of West Bengal

## WEBEL TECHNOLOGY LIMITED

**“Services”** means the work to be performed by the Bidder pursuant to this Contract, as described in the detailed Scope of Work.

**“Interest rate”** means “364 days Government of India (GoI) Treasury Bills” rate.

**“Law”** shall mean any Act, notification, bye law, rules and regulations, directive, ordinance, order or instruction having the force of law enacted or issued by the Central Government and/or the Government of West Bengal or any other Government or regulatory authority or political subdivision of government agency.

**“LOI”** means issuing of Letter of Intent shall constitute the intention of the WTL to place the Purchase Order with the successful bidder.

**“Requirements”** shall mean and include schedules, details, description, statement of technical data, performance characteristics, standards (Indian as well as International) as applicable and specified in the Contract.

**“Service”** means provision of Contracted service viz., operation, maintenance and associated services for DEPLOYED SYSTEMS as per Section titled “Scope of Work”.

**“Termination Notice”** means the written notice of termination of the Agreement issued by WTL.

**“Uptime”** means the time period when specified services are available with specified technical and service standards as mentioned in section titled WARRANTY SUPPORT” “%Uptime” means ratio of 'up time' (in minutes) as mentioned in section titled “Warranty support”.

**“Service Down Time”** (SDT) means the time period when specified services with specified technical and operational requirements as mentioned in section titled “WARRANTY SUPPORT” are not available to Gov. of W. Bengal and its user departments and organizations.

**“WTL”** means Webel Technology Limited a Govt. of West Bengal undertaking.

### 1. PRE-BID MEETING

Pre Bid Meeting will be held on 02.02.2022 at 12.00 hrs. (On-Line Meeting). Bidder can send their queries as per format (Section - N) to Manager (Purchase) (purchase@wtl.co.in). Only the queries received within the stipulated date prior to the Pre Bid Meeting will be answered. Interest bidders are requested to send mail to (purchase@wtl.co.in) for participation of online pre-bid meeting. Based on request WTL will share meeting id / links for meeting. If there is any change in date and time then will inform.

### 2. COST OF BIDDING

The bidder shall bear all costs associated with the preparation and submission of the bid and WTL will no case be responsible for those costs regardless of the conduct or outcome of the bidding process.

### 3. BID DOCUMENT

Bidder is expected to examine all instructions, forms, terms and requirement in the bid document. The invitation to bid together with all its attachment thereto shall be considered to be read, understood and accepted by the bidder unless deviations are specifically stated in the seriatim by the bidder. Failure to furnish all information required by the bid document or a bid not substantially responsive to the bid document in every respect may result of the bid.

### 4. AMENDMENT OF BID DOCUMENT

At any time prior to the deadline for submission of proposals, WTL reserves the right to add/modify/delete any portion of this document by issuance of a Corrigendum, which would be published on the website and will also be made available to the all the Bidder who have been issued the tender document. The Corrigendum shall be binding on all bidders and will form part of the bid documents.

### 5. MODIFICATION AND WITHDRAWAL OF BIDS

The bidder cannot modify or withdraw its bid after submission.

### 6. LANGUAGE OF BID & CORRESPONDENCE

The proposal will be prepared by the Bidder in English language only. All the documents relating to the



## WEBEL TECHNOLOGY LIMITED

proposal (including brochures) supplied by the firm should also be in English, and the correspondence between the Bidder & WTL will be in English language only. The correspondence by fax/E-mail must be subsequently confirmed by a duly signed formal copy.

### 7. BIDDER'S SOLUTION

The bidders are requested to study the Bill of Material supplied with this document carefully. While working out the solution the bidder has to work with the broad minimum specification provided in the tender documents, conforming to the model, make and Part number (wherever provided). While submitting the bid the bidder has to detail out all components needed to complete the system BOM. The bidder is required quote for each item retaining all major components/sub system detailed and specified. As the contractor will be responsible for smooth functioning of the system, availability of spares during the tenure of the warranty period have to be taken care by the contractor to maintain the guaranteed uptime.

### 8. EARNEST MONEY DEPOSIT (EMD) & TENDER FEE

The bidder shall furnish Online Receipt against payment of Tender Fees and Earnest Money Deposit.

### 9. REFUND OF EMD

EMD will be refunded to the unsuccessful bidders without interest by following guidelines of circular 3975-F(Y) dated 28/07/2016 on final selection of Successful Bidders.

### 10. FORMS AND FORMATS

The various inputs for the Techno Commercial as Financial Bids are to be submitted in the format specified. The bidder shall use the form, wherever specified, to provide relevant information. If form does not provide space for any required information, space at the end of the form or additional sheets shall be used to convey the said information. For all other cases, the bidder shall design a form to hold the required information.

### 11. LACK OF INFORMATION TO BIDDER

The bidder shall be deemed to have carefully examined the Bid document to his entire satisfaction. Any lack of information shall not relieve the bidder of his responsibility to fulfill his obligation under the bid. If bidder has any queries relating to bid document, then he can send the queries before the Pre Bid Meeting.

### 12. CONTRACT EXECUTION

On receipt of the Letter of Award/Purchase Order the contractor should submit a Performance Bank Guarantee (PBG) equivalent to **3% of the total contract value** within three weeks from the date of receipt of Letter of Award/Purchase Order. The PBG should be valid for six months more than the warranty period. All delivery of the material will have to be completed within 45 days from the date of acceptance of contract and the contractor has to ensure all activities leading to the commissioning of the contract to be completed within 75 days from the date of award. Subsequent to the award of contract, the contractor will have to arrange for the requisite material as per BOM..

### 13. TIME SCHEDULE FOR DELIVERY & INSTALLATION

**The project is divided into 6 zones for the purpose of faster implementation and better monitoring and management. It is mandated that any successful bidder may be allowed to implement maximum 3 Zones out of the 6 zones specified, for the purpose of the faster and better implementation management. The following is the timeline expected for the implementation process:**

- **The project is estimated to be completed within 6 months from the date of tendering.**
- **The implementation of project for each zone shall be conducted simultaneously with other zones**
  - **The site survey and the project management activities must commence with the award of the contract for each zone.**
  - **The supply and delivery of equipment must be completed within 6 weeks from date of award of contract**
  - **The installation process for each zone is expected to be completed within 8-10 weeks (2 months) for each zone.**

# WEBEL TECHNOLOGY LIMITED

- The project plan shown below is indicative and shall change based on the award of each zone to various bidders.**

CCTV Surveillance Implementation in Schools	M1				M2				M3				M4				M5				M6			
	W1	W2	W3	W4	W5	W6	W7	W8	W9	W10	W11	W12	W13	W14	W15	W16	W17	W18	W19	W20	W21	W22	W23	W24
Activity Details																								
Tendering Process & Award																								
Tender Preparation & Upload																								
Bid Submission																								
Technical Evaluation																								
Contract Finalization																								
Project Implementation																								
Site Survey (All Zones)																								
Delivery of Equipment (All zones)																								
Site Preparation (All zones)																								
Support Center setup (All Zones)																								
Zone 1 Installation																								
Zone 2 Installation																								
Zone 3 Installation																								
Zone 4 Installation																								
Zone 5 Installation																								
Zone 6 Installation																								

Note: The above plan is tentative and indicates that the project must be completed within 6 months from the date of tendering.

## 14. LOCATION FOR DELIVERY & INSTALLATION

The delivery of equipment and hardware/software shall be at site: (As mentioned in Section – B (Scope of Work)). The list of sites in each zone is as provided in the Section - U

- 1) Zone 1S 89 locations
- 2) Zone 2W 38 Locations
- 3) Zone 3C 30 Locations
- 4) Zone 4C 39 Locations
- 5) Zone 5N 44 Locations
- 6) Zone 6W 72 Locations

The bidders shall be required to deliver at site and complete the installation, as per the project plan for implementation to be submitted to WTL, within 1 week of award of contract for each zone.

## 16. LIQUIDATED DAMAGE / PENALTY

### Be-spoke Software & ICCC Platform: LD clause:

- i. 0.5% of the total Software bill value of this segment for every 168 hours delay in meeting the delivery schedule

### Hardware: LD clause:

- a. 0.5% of the total Hardware bill value of this segment for every 168 hours delay in meeting the delivery schedule
- b. 1.0% of the total year wise SLA bill value for the Hardware segment for every cumulative machine-hour (machine x hour) fault rectification delay beyond the response time fixed in the SLA
- c. The maximum deductible is capped at 10% of the total year wise SLA value.

### Vendor Termination Clause: -

- i. Termination possibility of MSI in the case of multiple cases of failure to meet SLA terms beyond monthly commitments for 6 continuous months

WTL reserves the right to terminate the contract and WTL will get the job completed by any other competent

## WEBEL TECHNOLOGY LIMITED

party. The difference of cost incurred by WTL will be recovered from the contractor and PBG will be invoked.

### 17. LIABILITY

In case of a default on bidder's part or other liability, WTL shall be entitled to recover damages from the Contractor. In each such instance, regardless of the basis on which WTL is entitled to claim damages from the Contractor (including fundamental breach, negligence, misrepresentation, or other contract or tort claim), Contractor shall be liable for no more than:

- Payment referred to in the Patents and Copyrights clause.
- Liability for bodily injury (including death) or damage to real property and tangible personal property limited to that cause by the Contractor's negligence.
- As to any other actual damage arising in any situation involving non-performance by Contractor pursuant to or in any way related to the subject of this Agreement, the charge paid by WTL for the individual product or Service that is the subject of the Claim. However, the contractor shall not be liable for
- For any indirect, consequential loss or damage, lost profits, third party loss or damage to property or loss of or damage to data.
- For any direct loss or damage that exceeds the total payment for Contract Price made or expected to be made to the Contractor hereunder.

### 18. PATENTS & COPYRIGHT

If a third party claims that a product delivered by the Contractor to WTL infringes that party's patent or copyright, the Contractor shall defend WTL against that claim at Contractor's expense and pay all costs, damages, and attorney's fees that a court finally awards or that are included in a settlement approved by the Contractor, provided that WTL.

- Promptly notifies Contractor in writing of the claim
- Allows Contractor to control and co-operate with Contractor in the defense and any related settlement negotiations.

Remedies: If such a claim is made or appears likely to be made, WTL would permit Contractor to enable WTL to continue to use the product, or to modify it, or replace it with one that is at least functionally equivalent. If Contractor determines that none of these alternatives is reasonably available, WTL agrees to return the product to Contractor on Contractor's written request. Contractor will then give WTL a credit equal to for a machine. WTL's net book value (provided WTL has followed generally accepted accounting principles for a generally available software product produced by Contractor (Program) the amount paid by WTL or 12 months charges (whichever is lesser) and for materials the amount paid by WTL for the materials. These will be Contractor's entire obligation regarding any claim of infringement.

### 19. SUSPENSION OF WORK

WTL shall have the power at any time and from time to time by notice to the Contractor to delay or suspend the progress of the work or any part of the work due to any other adequate reasons and on receipt of such notice the contractor shall forthwith suspend further progress of the work until further notice from WTL. The Contractor shall recommence work immediately after receiving a notice to do so from WTL. The whole or any part of the time lost for such delay or suspension shall, if WTL in its absolute discretion thinks fit, but not otherwise, be added to the time allowed for completion.

### 20. TERMS OF PAYMENT

Payment terms will be on back-to-back basis, i.e., payment will be made only on receipt of payment from customer. Any scheduled payment for the supply, installation and warranty only, shall be made on back to back basis, by WTL, as depicted below:

1. Payment Against Delivery – 75% of the Cost of Materials (Active and Passive Components) delivered at Installation Site.
2. Payment Against Installation & Commissioning – 10% payment (Active/Passive and SITC Cost) prorated on monthly basis, based on actual number of sited installed in the month, for 4 months.
3. 5% on completion of 1 year warranty period, subject to SLAs agreed upon during the signing of contract, with applicable penalties deducted as per agreement.
4. 5% on completion of 2nd year warranty period, subject to SLAs agreed upon during the signing of contract, with applicable penalties deducted as per agreement.
5. 5% on completion of 3rd year warranty period, subject to SLAs agreed upon during the signing of contract,

## WEBEL TECHNOLOGY LIMITED

with applicable penalties deducted as per agreement.

Payment for 3 years Warranty Support charges, shall be paid on back to back basis by WTL, after deduction of any penalty for the SLAs agreed.

### 21. GOVERNING LAWS

This contract should be governed by and interpreted by Arbitration clause in accordance with Laws in force in India. The courts at Kolkata shall have exclusive jurisdiction in all matters arising under the contract. The selected vendor shall keep himself fully informed of all current national, state and municipal law and ordinances. The selected vendor shall at their own expense, obtain all necessary permits and license and pay all fees and taxes required by law. These will be selected vendor's entire obligation regarding any claim of infringement. The selected vendor hereto agrees that it shall comply with all applicable union, state and local laws, ordinances, regulations and codes in performing its obligations hereunder, including the procurement of licenses, permits certificates and payment of taxes where required. The selected vendor shall establish and maintain all proper records (particularly, but without limitation, accounting records) required by any law, code/practice of corporate policy applicable to it from time to time including records and returns as applicable under labor legislation.

### 22. CORRUPT OR FRAUDULENT

The Tender Committee requires that the bidders under this Tender observe the highest standards of ethics during the procurement and execution of such contracts. For this purpose, the definition of corrupt and fraudulent practices will follow the provisions of the relevant laws in force. The Tender Committee will reject a proposal for award if it detects that the bidder has engaged in corrupt or fraudulent practices in competing for the contract in question. The Tender Committee will declare a firm ineligible, either indefinitely or for a stated period of time, if it at any time determines that the firm has engaged in corrupt and fraudulent practices in competing for, or in executing, a contract.

### 23. BINDING CLAUSE

All decisions taken by the Tender Committee regarding the processing of this tender and award of contract shall be final and binding on all parties concerned.

The Tender Committee reserves the right:

- To vary, modify, revise, amend or change any of the terms and conditions mentioned above and,
- To reject any or all the Tender/s without assigning any reason whatsoever thereof or to annul the bidding process and reject all bids at any time prior to award of contract, without thereby incurring any liability to the affected bidder(s) or any obligation to inform the affected bidder(s) of the grounds for such decision.

### 24. WORKMEN'S COMPENSATION

In every case in which by virtue of the provision of the workmen's compensation Act 1923 or any other relevant acts and rules, compensation to a workman employed by the contractor, is payable, then this should be done by the Contractor. If WTL is obliged to make any compensation under the said rules and acts, then the amount shall be recovered without prejudice, from the bills and due of the Contractor. WTL shall not be bound to contest any claim made against the Contractor in respect of workmen's compensation.

### 25. CONTRACTOR'S EMPLOYEES

The Contractor shall comply with the provision of all labour legislation including the requirement of the payment of Wage Act 1936 and the rules framed there under and modifications thereof in respect of men employed by him in carrying out the contract. The Contractor must ensure that he complies with PF, ESI regulation for all his deployed employees. The Contractor shall see that all authorized Sub Contractors under him similarly complied with the above requirement.

### 26. SAFETY MEASURES

The Contractor shall in the course of execution of the work take all necessary precaution for the protection of all persons and property. The Contractor shall take adequate measures to protect the work and prevent accident during the work. In the event of any accident to any person or persons or damage or injury of any description to any person or property due to failure on the part of the contractor in taking proper precautionary measures the contractor shall be responsible for and must make good the loss the damage at his own cost to the satisfaction of the department and employees of the department shall be indemnified from all claims or liabilities arising there from or any expenses incurred on account thereof.

## **WEBEL TECHNOLOGY LIMITED**

### **27. EQUIPMENT**

All tools & tackles necessary for the work shall have to be procured by the contractor unless otherwise specified elsewhere in these tender documents. The equipment used by the contractor for a particular work must be appropriate for the type of work. The contractor shall maintain the equipment used on the work properly so that they are in good working condition. In no case shall the contractor use defective or imperfect equipment in the work. The contractor shall arrange to replace or repair all defective equipment so that the progress of the work is not hampered. No defective equipment should be left at the site of work and the department shall not be responsible for any loss or damage to any of these equipment during the course of the execution of the work.

### **28. TERMINATION FOR DEFAULT**

WTL may without prejudice to any other remedy or right of claim for breach of contract by giving not less than 30 days written notice of default sent to the contractor, terminate the order in whole or in part. If the contractor materially fails to render any or all the services within the time period specified in the contract or any extension thereof granted by WTL in writing and fails to remedy its failure within a period of thirty days after receipt of default notice from WTL. If the project (delivery, commissioning as well as warranty maintenance support is not carried out according to specification due to deficiency in service as per terms of the contract. In such case WTL will invoke the amount held back from the contractor as PBG.

### **29. BANKRUPTCY**

If the contractor becomes bankrupt or have a receiving order made against him or compound with his creditors or being a corporation commence to be wound up, not being a voluntary winding up for the purpose only or amalgamation or reconstruction, or carry on their business under a receiver for the benefit of their creditors or any of them, WTL shall be at liberty to terminate the engagement forthwith without any notice in writing to the contractor or to the liquidator or receiver or to any person in whom the contractor may become vested and without any compensation to give such liquidator or receiver or other person the option of carrying out the engagement subject to their providing a guarantee for the due and faithful performance of the engagement up to an amount to be determined by WTL.

### **30. FORCE MAJEURE**

It is hereby defined as any cause, which is beyond the control of the Contractor or WTL as the case may be, which such party could not foresee or with a reasonable amount of diligence could not have foreseen and which substantially affect the performance of the contract, such as

- War, Hostilities or warlike operations (whether a state of war be declared or not), invasion, act of foreign enemy and civil war.
- Rebellion, revolution, insurrection, mutiny, usurpation of civil or military, government, conspiracy, riot, civil commotion and terrorist area.
- Confiscation, nationalization, mobilization, commandeering or requisition by or under the order of any government or de facto authority or ruler, or any other act or failure to act of any local state or national government authority.
- Strike, sabotage, lockout, embargo, import restriction, port congestion, lack of usual means of public transportation and communication, industrial dispute, shipwreck, shortage of power supply epidemics, quarantine and plague.
- Earthquake, landslide, volcanic activity, fire flood or inundation, tidal wave, typhoon or cyclone, hurricane, nuclear and pressure waves or other natural or physical disaster.

If either party is prevented, hindered or delayed from or in performing any of its obligations under the Contract by an event of Force Majeure, then it shall notify the other in writing of the occurrence of such event and the circumstances of the event of Force Majeure within fourteen days after the occurrence of such event. The party who has given such notice shall be excused from the performance or punctual performance of its obligations under the Contract for so long as the relevant event of Force Majeure continues and to the extent that such party's performance is prevented, hindered or delayed.

The party or parties affected by the event of Force Majeure shall use reasonable efforts to mitigate the effect of the event of Force Majeure upto its or their performance of the Contract and to fulfill its or their obligation under the Contract but without prejudice to either party's right to terminate the Contract.

No delay or nonperformance by either party to this Contract caused by the occurrence of any event of Force Majeure shall.

## WEBEL TECHNOLOGY LIMITED

- Constitute a default or breach of the contract.
- Give rise to any claim from damages or additional cost or expense occurred by the delay or nonperformance. If, and to the extent, that such delay or nonperformance is caused by the occurrence of an event of Force Majeure.

### 31. INSURANCE COVERAGE

Appropriate insurance to cover all solution components for the transit period and until the time of its acceptance at the respective site is to be taken by the contractor. As the contractor will carry the risk for the material in his books during transit, the contractor should arrange insurance for the total system as period from the dispatch till Acceptance Test is successfully achieved. Further the contractor is to take all required insurance coverage in respect of all its personnel who shall be working on this engagement.

### 32. WARRANTY & MAINTENANCE

- Contractor will have to provide comprehensive warranty on all components including software from the date of go-live of the solution.
  - 3 year Comprehensive Warranty of all products & onsite maintenance support
  - 2 year additional Comprehensive AMC support may be extended after the expiry of the 3 year Warranty and Onsite support..
- After completion of comprehensive warranty period WTL may go for fresh AMC with the supplier. Hence bidder should maintain sufficient stock of spares with them even after the expiry of the warranty period.
- The Contractor is liable for repairing all or any sort of damage detected during the warranty period completed free of cost.
- During the warranty period of 3 years, no active component should be declared "End of Life". In case it is declared "End of Life" during this period, the vendor has to replace such equipment at their own cost. A letter of Confirmation by OEM shall be mandatory. The rate should be quoted inclusive of warranty.
- Bidders must adhere to the SLAs and a agreement will be signed with the vendor for warranty & support after completion of installation.

### 33. PERFORMANCE BANK GUARANTEE (PBG)

As a guarantee for timely delivery, installation and commissioning of equipment as well as performance of on-site warranty support, as mentioned in Bill of Material, from the date of final acceptance of systems and pertaining to proper running of the systems, the bidder will have to submit **3% of the contract value** as security in the form of Performance Bank Guarantee from any nationalized bank as per format enclosed (Section – O).

### 34. SI/BIDDER/CONTRACTOR'S RESPONSIBILITIES

Refer Section – A (BACKGROUD & OBJECTIVE OF THE PROJECT) & Section B (Scope of Work)

### 35. NO WAIVER OF RIGHTS

Neither the inspection by WTL or any of their agents nor any order by WTL for payment of money or any payment for or acceptance of the whole or any part of the works by WTL, nor any extension of time, nor any possession taken by WTL shall operate as a waiver of any provision of the contract or of any power reserved to WTL, or any right to damages here in provided, nor shall any waiver of any breach in the contract be held to be a waiver of any other subsequent breach.

### 36. GRAFTS, COMMISSIONS, GIFTS, ETC.

It is the Purchaser's policy to require that bidders, suppliers, contractors and consultants under contracts, observe the highest standard of ethics during the procurement and execution of such contracts. Any graft, commission, gift or advantage given, promised or offered by or on behalf of the contractor or his partner, agent, officers, director, employee or servant or any one on his or their behalf in relation to the obtaining or to the execution of this or any other contract with WTL shall in addition to any criminal liability which it may incur, subject the contractor to the cancellation of this and all other contracts and also to payment of any loss or damage to WTL resulting from any cancellation. WTL shall then be entitled to deduct the amount so payable from any monies otherwise due to the contractor under contract.

## **WEBEL TECHNOLOGY LIMITED**

### **37. ENFORCEMENT OF TERMS**

The failure of either party to enforce at any time any of the provision of this contract or any rights in respect thereto or to exercise any option here in provided shall in no way be construed to be a waiver to such provisions, rights or options or in any way to affect the validity of the contract. The exercise by either party of any of its rights herein shall not preclude or prejudice either party from exercising the same or any other right it may have hereunder.

### **38. PERIOD OF VALIDITY OF OFFER**

For the purpose of placing the order, the proposals shall remain valid till 180 days. During the period of validity of proposals, the rates quoted shall not change. In exceptional circumstances, WTL may ask for extension of the period of validity and such a request shall be binding on Bidders. WTL's request and the response to such a request by various Bidders shall be in writing. A Bidder agreeing to such an extension will not be permitted to increase its rates.

### **39. TAXES & DUTIES**

- The prices shall be inclusive of all taxes & levies including GST and other statutory duties as applicable. Rate of taxes should be indicated separately in the Price Bid.
- Contract Price specified in Price Bid should be based on the taxes & duties and charges prevailing at the date one day prior to the last date of Bid submission.
- Statutory deduction, wherever applicable, shall be made from invoice as per government rules. Necessary certificate will be issued for such deductions.
- Bidder submitting a bid shall produce valid statutory documents / certificates with respect to GST, Income Tax, ROC, Prof. Tax, Trade License, etc. All such documents / certificates shall remain valid on the last date of tender submission.
- In case of inter-state transaction, WTL will provide "Waybill". However, statutory charges, if any will be borne by the bidder.
- GST component of the invoice of the bidder may be kept on hold in case there is any mismatch / irregularity in GST return filing on the part of the bidder.

### **40. DISCREPANCIES IN BID**

- Discrepancy between description in words and figures, the rate which corresponds to the words quoted by the bidder shall be taken as correct.
- Discrepancy in the amount quoted by the bidder due to calculation mistake of the unit rate then the unit rate shall be regarded as firm.
- Discrepancy in totaling or carry forward in the amount quoted by the bidder shall be corrected.

### **41. BID DUE DATE**

The online tender has to be submitted not later than the due date and time specified in the Important Dates Sheet. WTL may at its discretion on giving reasonable notice by fax, or any other written communication to all prospective bidders who have been issued the bid documents, extend the bid due date, in which case all rights and obligations of the WTL and the bidders, previously subject to the bid due date, shall thereafter be subject to the new bid due date as extended.

### **42. LATE BID**

Any proposal received by WTL after the deadline for submission of proposals may not be accepted.

### **43. OPENING OF BID BY WTL**

Bids shall be opened and downloaded electronically through operation of the process in the e-Tender portal in presence of Tender Committee. Bidders interested to remain present during electronic bid opening may attend the bid opening session at WTL premises at scheduled date & time.

### **44. CONTACTING WTL**

Bidder shall not approach WTL officers beyond office hours and/or outside WTL office premises from the time of the Bid opening to the time of finalization of successful bidder. Any effort by bidder to influence WTL office in the decision on Bid evaluation, bid comparison or finalization may result in rejection of the Bidder's offer. If the bidder wishes to bring additional information to the notice of WTL, must be in writing following the procedure mentioned hereinabove.

### **45. WTL'S RIGHT TO REJECT ANY OR ALL BIDS**

## WEBEL TECHNOLOGY LIMITED

WTL reserves the right to reject any bid and to annul the bidding process and reject all bids at any time prior to award of Contract, without thereby incurring any liability to the affected bidder(s) or any obligation to inform the affected bidder(s) of the grounds for such decision.

### 46. BID CURRENCIES

Prices shall be quoted in Indian Rupees, inclusive of all prevailing taxes, levies, duties, cess etc.

### 47. PRICE

- Price should be quoted in the BOQ format only. No deviation is acceptable.
- Price quoted should be firm, inclusive of packing, forwarding, insurance and freight charges.
- Percentage/specified amount of taxes & duties should be clearly mentioned otherwise WTL reserves the right to reject such vague offer.
- Price to be quoted for (SITC) supply, installation & commissioning charges for each site.
- Prices to be quoted shall be inclusive of 3 years onsite warranty maintenance and support.

### 48. CANVASSING

Canvassing or support in any form for the acceptance of any tender is strictly prohibited. Any bidder doing so will render him liable to penalties, which may include removal of this name from the register of approved Contractors.

### 49. NON-TRANSFERABILITY OF TENDER

This tender document is not transferable.

### 50. FORMATS AND SIGNING OF BID

The original and all copies of the proposals shall be neatly typed and shall be signed by an authorized signatory(ies) on behalf of the Bidder. The authorization shall be provided by written Power of Attorney accompanying the proposal. All pages of the proposal, except for un-amended printed literature, shall be initialed by the person or persons signing the proposal. The proposal shall contain no interlineations, erase or overwriting. In order to correct errors made by the Bidder, all corrections shall be done & initialed with date by the authorized signatory after striking out the original words/figures completely.

### 51. WITHDRAWAL OF BID

Bid cannot be withdrawn during the interval between their submission and expiry of Bid's validity period. Fresh Bid may be called from eligible bidders for any additional item(s) of work not mentioned herein, if so required.

### 52. INTERPRETATION OF DOCUMENTS

If any bidder should find discrepancies or omission in the specifications or other tender documents, or if he should be in doubt as to the true meaning of any part thereof, he shall make a written request to the tender inviting authority for correction/clarification or interpretation or can put in a separate sheet along with his technical bid document.

### 53. SPLITTING OF THE CONTRACT AND CURTAILMENT OF WORK

WTL reserve the right to split up and distribute the work among the successful bidders and to curtail any item of work in the schedule partly or fully. The Project consists of 6 Zones, consisting of schools and hostels in each zone. The contract for the 6 zones shall be split between 2 or more bidders in order to expedite the completion of the project and a single bidder can be awarded maximum of 3 zones out of 6 zones, for which the bidder has been declared L1.

Only under exceptional circumstances, and at the discretion of WTL tender committee, with permission from the school education department, a bidder may be allowed to implement more than 3 zones.

### 54. PREPARATION OF TENDER

Tender shall be submitted in accordance with the following instructions:

- a) Bidders must submit the tender for the entire project, including all 6 zones, as per the BoQ and Scope of work specified for each zone. Partial submission or omission of any zone in the technical or price bid, shall lead to rejection of the bid.
- b) Tenders shall be submitted in the prescribed forms. Digital signatures shall be used. Where there is conflict between the words and the figures, the words shall govern.



## **WEBEL TECHNOLOGY LIMITED**

- c) All notations must be in ink or type written. No erasing or overwriting will be permitted. Mistakes may be crossed out and corrections typed or written with ink adjacent thereto and must be initialed in ink by the person or persons signing the tender.
- d) Tenders shall not contain any recapitulation of the work to be done. Alternative proposals will not be considered unless called for. No written, oral, telegraphic or telephonic proposals for modifications will be acceptable.
- e) Tenders shall be uploaded as notified on or before the date and time set for the opening of tenders in the Notice Inviting Tenders.
- f) Tenders subject to any conditions or stipulations imposed by the bidder are liable to be rejected.
- g) Any bidder may withdraw his tender by written request at any time prior to the scheduled closing time for receipt of tenders and not thereafter.

### **55. PRE-DISPATCH INSTRUCTION**

All materials / equipment supplied against the purchase order shall be subjected to Inspection, check and /or test by the authorized representative from WTL.

### **56. FINAL INSPECTION**

Final inspection will be carried by the authorized representative from WTL.

### **57. SITE INSPECTION**

Bidder can inspect (at their own cost) the sites if required, for which they have to take necessary permission from WTL in writing. WTL will take at least four days to organize such permission.

### **58. ERASURES OR ALTERNATIONS**

The offers with overwriting and erasures may make the tender liable for rejection if each of such overwriting/erasures/manuscript ions is not only signed by the authorized signatory of the bidder. There should be no hand-written material, corrections or alterations in the offer. Technical details must be completely filled up. Correct technical information of the product being offered must be filled in. Filling up of the information using terms such as "OK", "accepted", "noted", "as given in brochure/manual" is not acceptable. The Customer may treat offers not adhering to these guidelines as unacceptable. The Customer may, at its discretion, waive any minor non-conformity or any minor irregularity in the offer. This shall be binding on all bidders and the Tender Committee reserves the right for such waivers.

### **59. COMPLIANCE WITH LAW**

The contractor hereto agrees that it shall comply with all applicable union, state and local laws, ordinances, regulations and codes in performing its obligations hereunder, including the procurement of licenses, permits certificates and payment of taxes where required. The contractor shall establish and maintain all proper records (particularly, but without limitation, accounting records) required by any law, code/practice of corporate policy applicable to it from time to time including records and returns as applicable under labor legislation.

### **60. CLARIFICATION OF BIDS**

During evaluation of the bids, the Customer/Tender Committee, at its discretion may ask the bidder for clarification of its bid. The request for the clarification and the response shall be in writing (fax/email) and no change in the substance of the bid shall seek offered or permitted.

### **61. QUALITY CONTROL**

- The contractor is obliged to work closely with WTL and/or West Bengal State Beverages Corporation Ltd., act within its authority and abide by directive issued by them on implementation activities.
- The contractor will abide by the safety measures and free WTL and West Bengal State Beverages Corporation Ltd. from all demands or responsibilities arising from accident/loss of life, the cause of which is due to their negligence. The bidder will pay all indemnities arising from such incidents and will not hold WTL and West Bengal State Beverages Corporation Ltd. responsible.
- The contractor will treat as confidential all data and information about the system, obtained in the execution of its responsibilities in strict confidence and will not reveal such information to any party without the prior written approval of WTL/ West Bengal State Beverages Corporation Ltd..
- WTL reserves the right to inspect all phases of contractor's operation to ensure conformity to the specifications. WTL shall have engineers, inspectors or other duly authorized representatives made known to the contractor, present during the progress of the work and such representatives shall have

## WEBEL TECHNOLOGY LIMITED

free access to the work at all times. The presence or absence of representatives of WTL does not relieve the contractor of the responsibility for quality control in all phases.

- The Court of Kolkata only will have the jurisdiction to deal with and decide any legal matters or dispute whatsoever arising out of the contract.

### 62. SERVICE LEVEL FOR WARRANTY SUPPORT (SLA)

#	SLA Parameter	Turnaround Time for Support	Target Uptime/year
1	Availability of Cameras	48 Hrs./2 Days	99.00%
2	Availability of Storage and Switches, Active Components	48 Hrs./2 Days	99.00%
3	Availability Passive Network & VMS	96Hrs/4 Days	98.00%

Definition:

1. "Availability" means availability of
  - Camera installed in the Schools and other sites listed in each zone
  - Active Components: PoE Switch/Storage & HDD/High End Desktop Computer/UPS
  - Passive Components: Network Points, VMS Software, Lan cables. etc
2. Turnaround time for support: Calculated based on No of Government working days

The support performance shall be calculated for a quarterly/half yearly basis, based on all equipment supplied and based on the calls logged and the resolution of the calls for support. WTL reserves the right to impose penalty on the bidder in case the support SLA performance is lower than the target turnaround time for repair/replacement, as shown below:

- Resolution of complaint for camera, active and passive components within turnaround time (days) – no penalty
- Resolution of complaint for camera, active and passive components beyond target turnaround time for support:
  - Rs. 500/- per day, after the allowed turnaround time for support , per camera
  - Rs. 500/- per day after the allowed turnaround time for support, for each of the other active components (NVR Storage, Hard Disks, PoE Switches, UPS)
  - Rs. 400/- per day after the allowed turnaround time for support for passive components, excluding power outlets and other accessories.
  - The total amount of penalty for a six month period shall not exceed 5% of the billable amount for the period.
  - Any fraction of the day on which the repair/replacement is completed, shall be counted as 1 day.
  - The PBG (Performance Bank Guarantee) may be forfeited if the penalty amount for any Quarter/6 month period is higher than 5% of the bill amount for the period (year) and no payment towards Warranty Support shall be made for the same year.

**The SLA agreement for service support in compliance to the minimum SLA required must be submitted by the L1 bidder on placement of order. WTL reserves the right to change/modify the SLAs during the finalization of the contractual agreement with the successful bidder.**

### 63. CONSORTIUM CLAUSE :

The Bid can be submitted by an individual company or a consortium.

In case of consortium applicant, consortia shall submit a valid Memorandum of Understanding (MOU)/agreement.

"Consortium" shall mean more than one company (Maximum two) which joins with other companies of complementing skills to undertake the scope of work defined in this RFP. In case of consortium the same shall not consist of more than Two companies/ corporations, including the prime bidder.

1. Memorandum of Understanding (MOU)/agreement among the members signed by the Authorized

## WEBEL TECHNOLOGY LIMITED

Signatories of the companies dated prior to the submission of the bid to be submitted in original.

2. The MoU/agreement shall clearly specify the prime bidder, stake of each member and outline the roles and responsibilities of each member.

### **Note:**

1. In the event of a consortium, one of the partners shall be designated as a "Prime Bidder". The bidder (prime) of the consortium shall be an Information Technology Company/ IT System Integrator. Every member of the consortium shall be equally responsible and jointly liable for the successful completion of the entire project.
2. The eligibility criteria specified in this tender must be met individually by the prime bidder, or collectively by the parties in consortium. The following eligibility criteria shall be evaluated as per the guideline below:
  - a. Eligibility Criteria – (Point 1, 2, 4, 5,) must be met by prime bidder and all parties of consortium.
  - b. Eligibility Criteria – (Point 3) must be met by prime bidder
  - c. Eligibility Criteria (Point 6, 7, 8) – may be jointly met by the parties in consortium.
  - d. Eligibility Criteria (Point 9) – may be met by the either party in the consortium.
  - e. Eligibility criteria ( Point 10, 11, 12, 13, 14) – must be met by the prime bidder of the consortium
  - f. Eligibility Criteria (Point 15) must be met by both parties in consortium individually.
3. In Consortium all the members shall be equally responsible to complete the project; however prime bidder shall give an undertaking for successful completion of the project. In case of any issues, prime bidder would be responsible for all the penalties.
4. A bidding company/ corporation cannot be a part of more than one Consortium. Any Member of consortium cannot bid separately as a sole bidder. The bidder (all consortium partners) must have Company registration certificate, Registration under labor laws & contract act, valid VAT/ Sales Tax Registration Certificate, valid Service Tax Registration Certificate and Income Tax Return with Audit Report from CA. Bidder shall provide an attested copy of all the above mentioned certificates along with this bid document.
5. A joint Bidding Agreement shall be furnished by members of the consortium.
6. Members of the Consortium should furnish a Power of Attorney in favor of the Lead Member.
7. Letter of Bid (LOB) shall be duly signed and stamped with the seal of lead member of consortium
8. Copy of valid Permanent Account Number (PAN) of all members of consortium, duly attested by the authorized representative of the bidder shall be furnished
9. Copy of GST Registration certificate (i.e. GST Identification Number) issued by appropriate authority to the lead member of the consortium, duly attested by the lead member of the consortium shall be furnished

### **64. GENERAL TERMS**

- a) All the documents to be submitted by the bidder along with their offer should be duly authenticated by the person signing the offer and if at any point of time during procurement process or subsequently it is detected that documents submitted are forged/tampered/manipulated in any way, the total responsibility lies with the bidder and WTL reserves the full right to take action as may be deemed fit including rejection of the offer and such case is to be kept recorded for any future dealing with them.
- b) No Technical/Commercial clarification will be entertained after opening of the tender.
- c) Quantity mentioned in the tender document is indicative only and orders shall be placed subject to actual requirement. WTL reserve the right to increase or decrease the quantity specified in the tender.
- d) WTL reserve the right to reject or accept or withdraw the tender in full or part as the case may be without assigning the reasons thereof. No dispute of any kind can be raised the right of buyer in any court of law or elsewhere.
- e) WTL reserve the right to ask for clarification in the bid documents submitted by the bidder. Documents may be taken if decided by the committee.

## WEBEL TECHNOLOGY LIMITED

- f) Supporting technical brochures/catalogues indicating each feature in respect of offered model and make must be submitted along with the offer, in absence of which the offer is liable to be ignored.
- g) No dispute by the bidders in regard to Technical/Commercial points will be entertained by WTL and decision taken by the Tender Committee will be final.
- h) Discrepancy in the amount quoted by the bidder due to calculation mistake, the unit rate shall be regarded as firm and the totaling or carry in the amount quoted by the bidder shall be corrected accordingly.
- i) The price offers shall remain firm within the currency of contract and no escalation of price will be allowed.
- j) The acceptance of the tender will rest with the accepting authority who is not bound to accept the lowest or any tender and reserves the right to reject in part or in full any or all tender(s) received and to split up the work among participants without assigning any reason thereof.
- k) The customer/WTL at its discretion may extend the deadline for the submission of Bids.
- l) The Court of Kolkata only will have the jurisdiction to deal with and decide any legal matters or dispute whatsoever arising out of the contract.

**m) Below mentioned clauses are applicable for all OEM / Products & Bidders:**

**Any bidder from a country which shares a land border with India will be eligible to bid in this tender only if the bidder is registered with the Competent Authority [DPIIT OM No.6/18/2019-PPD dated 23.07.2020].**

- a. **"Bidder" (including the term 'tenderer', 'consultant' or 'service provider' in certain contexts) means any person or firm or company, every artificial juridical person not falling in any of the descriptions of bidders stated hereinbefore, including any agency branch or office controlled by such person, participating in a procurement process.**
- b. **"Bidder from a country which shares a land border with India" for the purpose of above-mentioned Order means:**

- i. **An entity incorporated, established or registered in such a country; or**
- ii. **A subsidiary of an entity incorporated, established or registered in such a country; or**
- iii. **An entity substantially controlled through entities incorporated, established or registered in such a country; or**
- iv. **An entity whose beneficial owner is situated in such a country; or**
- v. **An Indian (or other) agent of such an entity; or**
- vi. **A natural person who is a citizen of such a country**

- n) **The successful bidder shall not be allowed to sub-contract works to any contractor from a country which shares a land border with India unless such contractor is registered with the Competent Authority.**

# WEBEL TECHNOLOGY LIMITED

## SECTION – F

### TECHNO COMMERCIAL EVALUATION & AWARDING OF CONTRACT

#### 6 Evaluation Procedure

- **Eligibility:** The Eligibility Criteria (Section - D) will be evaluated by Tender Committee
  - Bidders qualifying/meeting the eligibility criteria will be considered for further technical evaluation.
  - The bidders will be evaluated on Eligibility Criteria for Bidder and all the OEMs proposed in the bid.
- **Technical Evaluation:** The Tender Committee shall verify the following as part of Technical Evaluation:
  - Technical Specification (Technical Specification with Compliance Statement, (Section – O) Deviation in specification shall not be allowed
  - Technical Capability & Experience – Capability to implement projects of similar nature and value
  - Support and Services capability – Experience in providing support in similar projects in State, technical capacity in terms of manpower, technology and infrastructure in the state
  - Technical solution proposed (Presentation/Demo).
    - Understanding of the solutions proposed/innovations
    - Implementation plan/ approach
    - Support plan/methodology
    - Demonstration
- **Price Bid Evaluation:** Bidder qualified in Technical Specification shall be considered for further evaluation.
  - Bidders with the minimum marks (80 out of 100) will be eligible for price bid evaluation.
  - After qualifying in Technical Specification, qualified bidders will only be considered for Financial Bid evaluation.
- The basis of price bid evaluation shall be “Lowest Competitive Price Bid” for BOQ specified for each Zone separately. That is the technically qualified bidder with the lowest price quoted for each zone will be declared successful bidder for that zone and will be allowed for implementation of the solution within specified time limit and comprehensive warranty and onsite maintenance support for a period of three years.
- No Bidder shall be allowed to implement more than 3 Zones out of the three zones for which the bidder is declared L1. In case the L1 bidder opts out for implementation of any zone, the next lowest (L2) bidders for that zone, shall have the opportunity to match the L1 price.

The technical evaluation criteria is as detailed in the section 6.1 below.

#### 17. Technical Evaluation Process

18.

Sl.	Criteria/ Sub Criteria	Evaluation	Supporting Documents	Marks
1	The bidder must have completed Supply, Installation, Testing and Commissioning of any CCTV Surveillance project, worth all-inclusive cumulative amount of Rs. 1.00 crores only, in any year during last five financial years for any Govt. Departments or Public Sector Undertakings, in India.	10 Marks - One order meeting the requirement for CCTV project implementation.	Work Completion Certificates/ Go-Live Certificates & Work Order from the client are mandatory.	10

## WEBEL TECHNOLOGY LIMITED

2	The bidder shall have executed "Similar Nature" of single order for an amount not less than Rs.10.00 Crore in last 05 (Five) financial years (considering FY – 2015-2016, 2016-2017, 2017-18, 2018-19, 2019-20) in Government Department/PSU/Autonomous Body. References order copy with the completion certificate for the project to be provided.	(One order meeting the requirement, 20 Marks.	Work Completion Certificates/ Go-Live Certificates & Work Order from the client are mandatory.	20
	<u>OR</u>			
	The bidder shall have executed "Similar Nature" of two orders in total amount not less than Rs.11.00 Crore in last 05 (Five) financial years (considering FY – 2015-2016, 2016-2017, 2017-18, 2018-19, 2019-20) in Government Department/PSU/Autonomous Body. References order copy with the completion certificate for the project to be provided.	Two Orders meeting the requirement – 15 Marks		
	<u>OR</u>			
3	The bidder shall have executed "Similar Nature" of three orders in total amount not less than Rs.12.00 Crore in last 05 (Five) financial years (considering FY – 2015-2016, 2016-2017, 2017-18, 2018-19, 2019-20) in Government Department/PSU/Autonomous Body. References order copy with the completion certificate for the project to be provided.	Three Orders meeting the requirement – 10 Marks)		
	<b>Existing Support Infrastructure in West Bengal:</b>			
	1) Bidder must provide details of existing service and support infrastructure in all 6 Zones in West Bengal, for last 5 years.	1) List of Service centers, technical manpower resources in service center with contact number and years of experience in support services. (10 Marks)	Documentary evidence of Service/Support setup in each zone in West Bengal, including office address, list of manpower resources with contact number. (1) Service Centers in all 6 Zones with manpower = 12 Marks ( 2 marks for each zone). 2) Undertaking to setup service center in zone - 6 Marks ( 1 mark for each zone)	20

## WEBEL TECHNOLOGY LIMITED

	2) OEM Repair Center in Kolkata – The Proposed OEMs must have own repair center registered in West Bengal for last 3 years.	1) OEM Repair center details, with the documentation of registration under shops & establishment in Kolkata (4 Marks)	Documentary evidence of OEM repair and service center in Kolkata for all OEMs proposed. (All OEM Service and repair centers in Kolkata = 4, Any one OEM with no service/repair center in Kolkata - 0)	
	3) Call center in Kolkata – Bidders must have own call center in Kolkata with required resources to register complaints on Government working days.	1) Existing Call center setup details with list of resources, names, contact number, and toll free number (4 Marks)	1) Call center details with documentary evidence (4 Marks). (2) Undertaking to setup call center (2 Marks)	
4	<b>Technical Proposal</b>			
	Bidders must submit technical proposal complying to all 6 zones specified in the tender.	Compliance to the Technical Specifications with submitted unpriced BOM with exact make/ model & quantity	Exact Product Catalogue/ Brochure which is available in website/ online. (5 Marks)	20
		Data Sheets & exact Product Catalogue/ Brochure submitted by the bidder as per specifications in the RFP.	All Certificates mentioned in the RFP Document is mandatory (5 Marks)	
		Compliance Certificates for all product OEMs required as per RFP.	Technical compliance & MAF for make/models and OEM compliance specified in the tender; no major non-compliance will be allowed.(10 Marks)	
5	Technical Presentation, Solutions proposed, Demonstration	Solution Overview, Knowledge/ Understanding of the RFP document, Implementation and support process of the Project & Demonstration of the Technology (CCTV Surveillance + Storage + VMS) == 5+15+10 = 30 Marks).	1) Presentation – 20 Marks	30
			2) Demonstration of the Technology is mandatory otherwise the bid shall be rejected -- 10 Marks	

- i. To qualify the technical evaluation, the bidder must score a minimum of 80 marks.
- ii. The bidder has to comply technical specifications of all line items.

# **WEBEL TECHNOLOGY LIMITED**

## **7 AWARDING OF CONTRACT**

An affirmative Post Qualification determination will be prerequisite for award of the contract to the most overall responsive bidder for each Zone. Bidders, if disqualified in the technical evaluation, it will result in rejection of bidder's bid. Technically qualified bidders for all 6 zones shall be evaluated for price bid. The lowest bidder for each zone shall be determined through price bid evaluation. WTL will award the contract to the successful bidder whose bid has been determined to be substantially responsive after final negotiation may held with the most responsive bidder (L1), if required.

- Bidders must submit price bid for each of the 6 zones. Any non-compliance to the price bid shall lead to rejection.
- L1 Bidders for each zone shall be awarded the contract for the respective zone.
- No bidder shall be awarded for more than 3 zones out of the three. If any bidder is L1 in 3 or more zones, the bidder shall have the right to choose 3 zones for awarding of contract.
- The L2 Bidder shall be awarded the contract for the zone(s) not chosen by bidder, if they agree to match the L1 price.
- In case no qualified bidder agrees to match the L1 price, the zone may, at the discretion of WTL, be awarded to the overall L1 bidder for that zone.

This is a turnkey job in a nature, so bidder(s) to quote all the items mentioned in the tender document for all six zones, which can ensure single point contact / sole responsibility of the bidder(s) towards project execution. The successful bidder (s) will have to give security deposit in the form of Performance Bank Guarantee, for the respective Zones for which they shall be awarded the contract.

## **19. POST QUALIFICATION**

The determination will evaluate the Bidder's financial, technical and support capabilities and will be based on an examination of the documentary evidence of the Bidder's qualification, as well as other information WTL deems necessary and appropriate. This determination may include visits or interviews with the Bidder's client's reference in its bid, site inspection, and any other measures.



# WEBEL TECHNOLOGY LIMITED

## SECTION – G

### BID FORM

(Bidders are requested to furnish the Bid Form in the Format given in this section, filling the entire Blank and to be submitted on Letter Head in original)

To  
**Webel Technology Limited**  
**Plot – 5, Block – BP, Sector - V,**  
**Salt Lake City,**  
**Kolkata – 700091.**

**Sub: Supply, Installation, Testing, Commissioning (SITC) and Maintenance of CCTV surveillance systems in Govt. sponsored / aided Girls' and Co-Ed Secondary/Higher Secondary Schools and Girls' Hostels in West Bengal, Under School Education Department, Govt. of West Bengal"**

Dear Sir,

1. We the undersigned bidder/(s), having read and examined in details the specifications and other documents of the subject tender no. WTL/SE/CCTV/21-22/030 dated 26.01.2022, do hereby propose to execute the job as per specification as set forth in your Bid documents.
2. The prices of all items stated in the bid are firm during the entire period of job irrespective of date of completion and not subject to any price adjusted as per in line with the bidding documents. All prices and other terms & conditions of this proposal are valid for a period of 180 (one hundred eighty) days from the date of opening of bid. We further declare that prices stated in our proposal are in accordance with your bidding.
3. We confirm that our bid prices include all other taxes and duties and levies applicable on bought out components, materials, equipment and other items and confirm that any such taxes, duties and levies additionally payable shall be to our account.
4. Earnest Money Deposit: We have enclosed the EMD remittance/BG details for a sum of Rs. 10,00,000/-.
5. We declare that items shall be executed strictly in accordance with the specifications and documents irrespective of whatever has been stated to the contrary anywhere else in our proposal. Further, we agree that additional conditions, deviations, if any, found in the proposal documents other than those stated in our deviation schedule, save that pertaining to any rebates offered shall not be given effect to.
6. If this proposal is accepted by you, we agree to provide services and complete the entire work, in accordance with schedule indicated in the proposal. We fully understand that the work completion schedule stipulated in the proposal is the essence of the job, if awarded.
7. We further agree that if our proposal is accepted, we shall provide a Performance Bank Guarantee of the value equivalent to ten percent (10%) of the Order value as stipulated in Financial Bid (BOQ).
8. We agree that WTL reserves the right to accept in full/part or reject any or all the bids received or split order within successful bidders without any explanation to bidders and his decision on the subject will be final and binding on Bidder.

Dated, this .....day of .....2022

## WEBEL TECHNOLOGY LIMITED

Thanking you, we remain,  
Yours faithfully

.....  
Signature

.....  
Name in full

.....  
Designation

### Signature & Authorized Verified by

.....  
Signature

.....  
Name in full

.....  
Designation

.....  
Company Stamp

# **WEBEL TECHNOLOGY LIMITED**

## **SECTION – H**

### **GUIDANCE FOR E-TENDERING**

Instructions / Guidelines for electronic submission of the tenders have been annexed for assisting the Bidders to participate in e-Tendering.

#### **20. Registration of Bidder:**

Any Bidder willing to take part in the process of e-Tendering will have to be enrolled & registered with the Government e-Procurement System through logging on to **<https://wbtenders.gov.in>**. The Bidder is to click on the link for e-Tendering site as given on the web portal.

#### **21. Digital Signature Certificate (DSC):**

Each Bidder is required to obtain a Class-II or Class-III Digital Signature Certificate (DSC) for submission of tenders from the approved service provider of the National Informatics Centre (NIC) on payment of requisite amount. Details are available at the Web Site stated above. DSC is given as a USB e-Token.

#### **22. The Bidder can search & download N.I.T. & BOQ electronically from computer once he logs on to the website mentioned above using the Digital Signature Certificate. This is the only mode of collection of Tender Documents.**

#### **23. Participation in more than one work:**

A prospective bidder shall be allowed to participate in the job either in the capacity of individual or as a partner of a firm. If, found to be applied severally in a single job all the applications will be rejected.

#### **24. Submission of Tenders:**

Tenders are to be submitted through online to the website stated above in two folders at a time, one in Techno Commercial Proposal & the other is Financial Proposal before the prescribed date & time using the Digital Signature Certificate (DSC). The documents are to be uploaded virus scanned copy duly Digitally Signed. The documents will get encrypted (transformed into non readable formats)

The proposal should contain scanned copies of the following in two covers (folders).

#### **25. Techno Commercial Cover:**

##### **Technical Document1**

1. Bid Form as per format (Section – G)
2. Required documents

##### **Technical Document2**

1. Copy of N I T duly stamped & signed
2. Declaration of Eligibility Criteria, Section - R

##### **Technical Compliance**

1. Detailed Technical Specification, Section – O
2. Make, Model & Part Number, Section – N
3. Manufacturer Authorization/OEM Declaration, Section – P/Q

## WEBEL TECHNOLOGY LIMITED

### 26. Financial Cover:

BOQ (Bill of Quantity) will be downloaded and same will be uploaded with quoted rates. While uploading BOQ file name shall remain unchanged. Absence of this document shall lead to summary rejection of the bid.

### NON-STATUTARY COVER (MY SPACE) CONTAIN FOLLOWING DOCUMENT:

(In each folder, scanned copy will be uploaded with single file having multiple pages)

Sl. No.	Category Name	Sub Category Name	Sub Category Description
A	CERTIFICATES	A1. CERTIFICATES	<ul style="list-style-type: none"> <li>• GST Certificate,</li> <li>• Trade License</li> <li>• PAN</li> </ul>
B	COMPANY DETAILS	B1. COMPANY DETAILS 1	<ul style="list-style-type: none"> <li>• Document as per Clause – 1 of Part A of Section – D</li> <li>• Document as per Clause - 2 of Part A of Section – D</li> <li>• Declaration as per Clause no. 8 of Section – C</li> </ul>
		B2. COMPANY DETAILS 2	<ul style="list-style-type: none"> <li>• Order copies &amp; Completion Certificates as per Clause - 1 of of Part B of Section – D</li> <li>• Order copies as per evaluation criteria (Section – F)</li> </ul>
C	CREDENTIAL	CREDENTIAL 1	<ul style="list-style-type: none"> <li>• Document as per Clause – 5 of Part B of Section – D</li> <li>• Call Center details as per Clause - 6 of Part B of Section – D</li> <li>• Declaration as per Clause no. 11 of Section – D</li> </ul>
		CREDENTIAL 2	<ul style="list-style-type: none"> <li>• Payment Certificate as per evaluation criteria (Section – F)</li> <li>• Customer Feedback as per evaluation criteria (Section – F)</li> </ul>
D	DECLARATION	DECLARATION 1	Supporting Documents as per Clause – 7 (a), Part B of Section – D
		DECLARATION 2	<ul style="list-style-type: none"> <li>• Technical Capability of the Bidder as per format (Section – I)</li> <li>• Financial Capability of Bidder as per format (Section – J)</li> </ul>
		DECLARATION 3	<ul style="list-style-type: none"> <li>• Bidder's Details as per format (Section – K)</li> <li>• Document as per Clause – 10 of Section – D</li> </ul>
		DECLARATION 4	Supporting Documents as per Clause – 7 (b), Part B of Section – D
		DECLARATION 5	Document of Manpower as per evaluation criteria (Section – F)
F	FINANCIAL INFO	P/L & BALANCE SHEET 2017-2018	P/L & BALANCE SHEET 2017-2018
		P/L & BALANCE SHEET 2018-2019	P/L & BALANCE SHEET 2018-2019
		P/L & BALANCE SHEET 2019-2020	P/L & BALANCE SHEET 2019-2020

# WEBEL TECHNOLOGY LIMITED

## SECTION – I

### FORMAT FOR TECHNICAL CAPABILITY OF BIDDER

(Tender No. WTL/SE/CCTV/21-22/030 DATED XX.26.01.2022)

Sl. No.	Project Name	Start Date	End Date / Status	Brief description of project & scope of work (Implementation, operation & maintenance)	Type of project	Approx value of the project	Contact details of the Customer

Authorized Signatory (Signature In full): \_\_\_\_\_

Name and title of Signatory: \_\_\_\_\_

Stamp of the Company: \_\_\_\_\_

#### **27. Note:**

- A. Type of Project shall indicate the implementation of services (CCTV Surveillance, Networking Setup, System Integration).
- B. Scope of work shall indicate whether it is implementation, Operation or maintenance.
- C. Submit Customer Order Copy details of the order indicating the project value, customer contact details, project completion certificate, customer satisfaction certificate etc.

## WEBEL TECHNOLOGY LIMITED

### **SECTION – J: FORMAT FOR FINANCIAL CAPABILITY OF BIDDER**

#### **FORMAT FOR FINANCIAL CAPABILITY OF BIDDER**

(Tender No. WTL/SE/CCTV/21-22/030 DATED XX.26.01.2022)

#### **FINANCIAL INFORMATION**

Sl. No.	Name of the Bidder	Turnover (Rs. / Crores)		
		2017-2018	2018-2019	2019-2020
1				

Authorized Signatory (Signature In full): \_\_\_\_\_

Name and title of Signatory: \_\_\_\_\_

Stamp of the Company: \_\_\_\_\_

**28. Note:**

Submit the Audited Financial Statement / Audited Accounts of the last three financial years.

# WEBEL TECHNOLOGY LIMITED

## **SECTION – K: FORMAT FOR BIDDER’S DETAILS**

### **FORMAT FOR BIDDER’S DETAILS**

(Tender No. WTL/SE/CCTV/21-22/030 DATED XX.26.01.2022)

1	Name of the Firm	
2	Registered Office Address	
	Contact Number	
	Fax Number	
	E-mail	
3	Correspondence / Contact address	
	Name & Designation of Contact person	
	Address	
	Contact Number	
	Fax Number	
	E-mail	
4	Is the firm a registered company? If yes, submit documentary proof	
	Year and Place of the establishment of the company	
5	Former name of the company, if any	
6	Is the firm <ul style="list-style-type: none"> <li>▪ a Government/ Public Sector Undertaking</li> <li>▪ a propriety firm</li> <li>▪ a partnership firm (if yes, give partnership deed)</li> <li>▪ a limited company or limited corporation</li> <li>▪ a member of a group of companies, (if yes, give name and address and description of other companies)</li> <li>▪ a subsidiary of a large corporation (if yes give the name and address of the parent organization). If the company is subsidiary, state what involvement if any, will the parent company have in the project.</li> </ul>	
7	Is the firm registered with Sales Tax department? If yes, submit valid VAT Registration certificate.	
8	Is the firm registered for Service Tax with Central Excise Department (Service Tax Cell)? If yes, submit valid Service Tax registration certificate.	
9	Total number of employees. Attach the organizational chart showing the structure of the organization.	
10	Are you registered with any Government/ Department/ Public Sector Undertaking (if yes, give details)	
11	How many years has your organization been in business under your present name? What were your fields when you established your organization	
12	What type best describes your firm? (Purchaser reserves the right to verify the claims if necessary) <ul style="list-style-type: none"> <li>▪ Manufacturer</li> <li>▪ Supplier</li> <li>▪ System Integrator</li> <li>▪ Consultant</li> <li>▪ Service Provider (Pl. specify details)</li> <li>▪ Software Development</li> <li>▪ Total Solution provider (Design, Supply, Integration, O&amp;M)</li> <li>▪ IT Company</li> </ul>	
13	Number of Offices in district head quarters in West Bengal	
14	Is your organization has ISO 9001:2015 certificates?	
15	List the major clients with whom your organization has been / is currently associated.	
16	Have you in any capacity not completed any work awarded to you? (If so, give the name of project and reason for not completing the work)	
17	Have you ever been denied tendering facilities by any Government / Department / Public sector Undertaking? (Give details)	

Authorized Signatory (Signature In full): \_\_\_\_\_

Name and title of Signatory: \_\_\_\_\_

Company Rubber Stamp: \_\_\_\_\_

# WEBEL TECHNOLOGY LIMITED

## SECTION – L

### **FORMAT FOR PRE-BID MEETING QUERIES**

(Tender No. WTL/SE/CCTV/21-22/030 DATED XX.26.01.2022)

Name of the Bidder:

Queries

Sl. No.	Section No.	Clause No.	Page No.	Queries

Authorized Signatory (Signature In full): \_\_\_\_\_

Name and title of Signatory: \_\_\_\_\_

Company Rubber Stamp: \_\_\_\_\_

**Note:** The filled form to be submitted in XLS & PDF Format. There is a cutoff date for receiving of queries before Pre Bid Meeting. Queries received after the cutoff period will not be accepted. The Purchaser reserves the right to respond all or selected queries only over e-mail.



# WEBEL TECHNOLOGY LIMITED

## SECTION – M

### PROFORMA FOR PERFORMANCE BANK GUARANTEE

(On non-judicial stamp paper of appropriate value to be purchased in the name of executing Bank)

#### PROFORMA OF BANK GUARANTEE FOR SECURITY DEPOSIT –CUM-PRFORMANCE GUARANTEE

Ref .....

Bank Guarantee no.....

Date.....

#### PROFORMA OF BG FOR SECURITY DEPOSIT

KNOW ALL MEN BY THESE PRESENTS that in consideration of WEBEL TECHNOLOGY LIMITED, a Government of West Bengal Undertaking incorporated under the Companies Act, 1956 having its Registered office at Webel Bhavan, Block EP&GP, Sector V, Kolkata-700 091 (hereinafter called "The Purchaser") having agreed to accept from \_\_\_\_\_ (hereinafter called "The Contractor") Having its Head Office at \_\_\_\_\_, a Bank guarantee for Rs. \_\_\_\_\_ in lieu of Cash Security Deposit for the due fulfillment by the Contractor of the terms & conditions of the Work Order No. \_\_\_\_\_ dated \_\_\_\_\_ issued by the Purchaser for \_\_\_\_\_ (hereinafter called "the said work order" \_\_\_\_\_ dated \_\_\_\_\_). We \_\_\_\_\_ (Name & detailed address of the branch) (hereinafter called "the Guarantor") do hereby undertake to indemnify and keep indemnified the Purchaser to the extent of Rs. \_\_\_\_\_ (Rupees \_\_\_\_\_) only against any loss or damage caused to or suffered by the Purchaser by reason of any breach by the Contractor of any of the terms and conditions contained in the said Work Order No. \_\_\_\_\_ dated \_\_\_\_\_ of which breach the opinion of the Purchaser shall be final and conclusive.

(2) AND WE, \_\_\_\_\_ DO HEREBY Guarantee and undertake to pay forthwith on demand to the Purchaser such sum not exceeding the said sum of \_\_\_\_\_ Rupees \_\_\_\_\_) only as may be specified in such demand, in the event of the Contractor failing or neglecting to execute fully efficiently and satisfactorily the order for \_\_\_\_\_ Work Order no. , \_\_\_\_\_ dated \_\_\_\_\_

(3) WE \_\_\_\_\_ further agree that the guarantee herein contained shall remain in full force and effect during the period that would be taken for the performance of the said order as laid down in the said Work Order No. \_\_\_\_\_ dated \_\_\_\_\_ including the warranty obligations and that it shall continue to be enforceable till all the dues of the Purchaser under or by virtue of the said Work Order No. \_\_\_\_\_ dated \_\_\_\_\_ have been fully paid and its claims satisfied or is charged or till the Purchaser or its authorized representative certified that the terms and conditions of the said Work Order No. \_\_\_\_\_ dated \_\_\_\_\_ have been fully and properly carried out by the said contractor and accordingly discharged the guarantee.

(4) We \_\_\_\_\_ the Guarantor undertake to extend the validity of Bank Guarantee at the request of the contractor for further period of periods from time to time beyond its present validity period failing which we shall pay the Purchaser the amount of Guarantee.

(5) The liability under the Guarantee is restricted to Rs. \_\_\_\_\_ (Rupees \_\_\_\_\_) only and will expire on \_\_\_\_\_ and unless a claim in writing is presented to us or an action or suit to enforce the claim is filed against us within 3 months from \_\_\_\_\_ all your rights will be forfeited and we shall be relieved of and discharged from all our liabilities (thereinafter)

(6) The Guarantee herein contained shall not be determined or effected by liquidation or winding up or

## WEBEL TECHNOLOGY LIMITED

insolvency or closer of the Contractor.

(7) The executants has the power to issue this guarantee on behalf of Guarantor and holds full and valid power of Attorney granted in his favour by the Guarantor authorizing him to execute the Guarantee.

(8) Notwithstanding anything contained herein above, our liability under this guarantee is restricted to Rs. \_\_\_\_\_ (Rupees \_\_\_\_\_) only and our guarantee shall remain in force up to \_\_\_\_\_ and unless a demand or claim under the guarantee is made on us in writing on or before \_\_\_\_\_ all your rights under the guarantee shall be forfeited and we shall be relieved and discharged from all liabilities there under.

WE, \_\_\_\_\_ lastly undertake not to revoke this guarantee during the currency except with the previous consent of the Purchaser in writing. In witness whereof we \_\_\_\_\_ have set and subscribed our hand on

this \_\_\_\_\_ day of \_\_\_\_\_.

SIGNED, SEALED AND DELIVERED

WITNESS

1) \_\_\_\_\_

\_\_\_\_\_

(Stamp of the executants)

2) \_\_\_\_\_  
(Name & address in full with  
Rubber Stamp)

## **WEBEL TECHNOLOGY LIMITED**

### **INSTRUCTIONS FOR FURNISHING BANK GUARANTEE**

1. Bank Guarantee (B.G.) for Advance payment, Mobilization Advance, B.G. for security Deposit-cum-Performance Guarantee, Earnest Money should be executed on the Non-Judicial Stamp paper of the applicable value and to be purchased in the name of the Bank.
2. The Executor (Bank authorities) may mention the Power of Attorney No. and date of execution in his/her favour with authorization to sign the documents. The Power of Attorney is to be witnessed by two persons mentioning their full name and address.
3. The B.G. should be executed by a Nationalized Bank/ Scheduled Commercial Bank preferably on a branch located in Kolkata. B.G. from Co-operative Bank / Rural Banks is not acceptable.
4. A Confirmation Letter of the concerned Bank must be furnished as a proof of genuineness of the Guarantee issued by them.
5. Any B.G. if executed on Non-Judicial Stamp paper after 6 (six) months of the purchase of such stamp shall be treated as Non-valid.
6. Each page of the B.G. must bear signature and seal of the Bank and B.G. Number.
7. The content of the B.G. shall be strictly as Proforma prescribed by WTL in line with Purchase Order /LOI/ Work Order etc. and must contain all factual details.
8. Any correction, deletion etc. in the B.G. should be authenticated by the Bank Officials signing the B.G.
9. In case of extension of a Contract the validity of the B.G. must be extended accordingly.
10. B.G. must be furnished within the stipulated period as mentioned in Purchase Order / LOI / Work Order etc.
11. Issuing Bank / The Vendor are requested to mention the Purchase Order / Contract / Work Order reference along with the B. G. No. for making any future queries to WTL

# WEBEL TECHNOLOGY LIMITED

## SECTION – N

### MAKE, MODEL & PART NUMBER

(Tender No. WTL/SE/CCTV/21-22/030 DATED XX.26.01.2022)

(1) Zone 1S (Jhargram, Purba Medinipur, Paschim Medinipur.)

Sl.	Item	Quantity	Unit	Make	Model	Part No.
1	5 MP IP Bullet network Camera (IR Range: 30 mts.)	1616	No.			
2	64 Channel NVR [8 SATA]	2	No.			
3	32 Channel NVR [4 SATA]	6	No.			
4	16 Channel NVR [2 SATA]	81	No.			
5	8TB Enterprise HDD	190	No.			
6	1 KVA UPS with 30 mnts backup	89	No.			
7	600/650 VA Line Interactive UPS	101	No.			
8	43" FHD IPS Display	89	No.			
9	L2 Un-managed 16-Port PoE Switch	101	No.			
10	L2 Un-managed 8-Port PoE Switch	89	No.			
11	Cat6 UTP Cable	96960	Mts.			
12	6U Wall Mount Indoor Networking Rack	101	No.			
13	15 U Rack with accessories	89	No.			
14	UTP Patch Panel: 24-Port	190	No.			
15	Cat6 UTP Keystone Jack White	1616	No.			
16	Cat6 UTP Patch Cord - 0.5Mtr	1616	No.			
17	Cat6 UTP Patch Cord - 2Mtr	1616	No.			
18	Cat6 IJTP Patch Cord - 3Mtr	396	No.			
19	20mm PVC Conduit & accessories	96960	Mts.			
20	Video Monitoring Software	1616	License			

Authorized Signatory (Signature In full): \_\_\_\_\_

Name and title of Signatory: \_\_\_\_\_

Company Rubber Stamp: \_\_\_\_\_

## WEBEL TECHNOLOGY LIMITED

### (2) Zone 2W (Murshidabad, Nadia, Purba Bardhaman)

Sl.	Item	Quantity	Unit	Make	Model	Part No.
1	5 MP IP Bullet network Camera (IR Range: 30 mts.)	1472	No.			
2	64 Channel NVR [8 SATA]	9	No.			
3	32 Channel NVR [4 SATA]	27	No.			
4	16 Channel NVR [2 SATA]	2	No.			
5	8TB Enterprise HDD	130	No.			
6	1 KVA UPS with 30 mnts backup	38	No.			
7	600/650 VA Line Interactive UPS	92	No.			
8	43" FHD IPS Display	38	No.			
9	L2 Un-managed 16-Port PoE Switch	92	No.			
10	L2 Un-managed 8-Port PoE Switch	38	No.			
11	Cat6 UTP Cable	88320	Mts.			
12	6U Wall Mount Indoor Networking Rack	92	No.			
13	15 U Rack with accessories	38	No.			
14	UTP Patch Panel: 24-Port	130	No.			
15	Cat6 UTP Keystone Jack White	1472	No.			
16	Cat6 UTP Patch Cord - 0.5Mtr	1472	No.			
17	Cat6 UTP Patch Cord - 2Mtr	1472	No.			
18	Cat6 IJTP Patch Cord - 3Mtr	332	No.			
19	20mm PVC Conduit & accessories	88320	Mts.			
20	Video Monitoring Software	1472	License			

Authorized Signatory (Signature In full): \_\_\_\_\_

Name and title of Signatory: \_\_\_\_\_

Company Rubber Stamp: \_\_\_\_\_

## WEBEL TECHNOLOGY LIMITED

### (3) Zone 3C (Kolkata, North 24 Parganas)

Sl.	Item	Quantity	Unit	Make	Model	Part No.
1	5 MP IP Bullet network Camera (IR Range: 30 mts.)	1312	No.			
2	64 Channel NVR [8 SATA]	11	No.			
3	32 Channel NVR [4 SATA]	19	No.			
4	8TB Enterprise HDD	112	No.			
5	10 TB Enterprise HDD	0	No.			
6	1 KVA UPS with 30 mnts backup	30	No.			
7	600/650 VA Line Interactive UPS	82	No.			
8	43" FHD IPS Display	30	No.			
9	L2 Un-managed 16-Port PoE Switch	82	No.			
10	L2 Un-managed 8-Port PoE Switch	30	No.			
11	Cat6 UTP Cable	78720	Mts.			
12	6U Wall Mount Indoor Networking Rack	82	No.			
13	15 U Rack with accessories	30	No.			
14	UTP Patch Panel: 24-Port	112	No.			
15	Cat6 UTP Keystone Jack White	1312	No.			
16	Cat6 UTP Patch Cord - 0.5Mtr	1312	No.			
17	Cat6 UTP Patch Cord - 2Mtr	1312	No.			
18	Cat6 IJTP Patch Cord - 3Mtr	284	No.			
19	20mm PVC Conduit & accessories	78720	Mts.			
20	Video Monitoring Software	1312	License			

Authorized Signatory (Signature In full): \_\_\_\_\_

Name and title of Signatory: \_\_\_\_\_

Company Rubber Stamp: \_\_\_\_\_

## WEBEL TECHNOLOGY LIMITED

(4) Zone 4C (Howrah, South 24 Parganas, Hoogly)

Sl.	Item	Quantity	Unit	Make	Model	Part No.
1	5 MP IP Bullet network Camera (IR Range: 30 mts.)	1536	No.			
2	64 Channel NVR [8 SATA]	11	No.			
3	32 Channel NVR [4 SATA]	24	No.			
4	16 Channel NVR [2 SATA]	4	No.			
5	8TB Enterprise HDD	135	No.			
6	1 KVA UPS with 30 mnts backup	39	No.			
7	600/650 VA Line Interactive UPS	96	No.			
8	43" FHD IPS Display	39	No.			
9	L2 Un-managed 16-Port PoE Switch	96	No.			
10	L2 Un-managed 8-Port PoE Switch	39	No.			
11	Cat6 UTP Cable	92160	Mts.			
12	6 U Wall Mount Indoor Networking Rack	96	No.			
13	15 U Rack with accessories	39	No.			
14	UTP Patch Panel: 24-Port	135	No.			
15	Cat6 UTP Keystone Jack White	1536	No.			
16	Cat6 UTP Patch Cord - 0.5Mtr	1536	No.			
17	Cat6 UTP Patch Cord - 2Mtr	1536	No.			
18	Cat6 IJTP Patch Cord - 3Mtr	340	No.			
19	20mm PVC Conduit & accessories	92160	Mts.			
20	Video Monitoring Software	1536	License			

Authorized Signatory (Signature In full): \_\_\_\_\_

Name and title of Signatory: \_\_\_\_\_

Company Rubber Stamp: \_\_\_\_\_

## WEBEL TECHNOLOGY LIMITED

(5) Zone 5N (Alipurduar, Coochbehar, Dakshin Dinajpur, Uttar Dinajpur, Siliguri, Kalimpong, Darjeeling, Malda, Jalpaiguri)

Sl.	Item	Quantity	Unit	Make	Model	Part No.
1	5 MP IP Bullet network Camera (IR Range: 30 mts.)	1376	No.			
2	64 Channel NVR [8 SATA]	7	No.			
3	32 Channel NVR [4 SATA]	21	No.			
4	16 Channel NVR [2 SATA]	16	No.			
5	8TB Enterprise HDD	130	No.			
6	1 KVA UPS with 30 mnts backup	44	No.			
7	600/650 VA Line Interactive UPS	86	No.			
8	43" FHD IPS Display	44	No.			
9	L2 Un-managed 16-Port PoE Switch	86	No.			
10	L2 Un-managed 8-Port PoE Switch	44	No.			
11	Cat6 UTP Cable	82560	Mts.			
12	6U Wall Mount Indoor Networking Rack	86	No.			
13	15 U Rack with accessories	44	No.			
14	UTP Patch Panel: 24-Port	130	No.			
15	Cat6 UTP Keystone Jack White	1376	No.			
16	Cat6 UTP Patch Cord - 0.5Mtr	1376	No.			
17	Cat6 UTP Patch Cord - 2Mtr	1376	No.			
18	Cat6 IJTP Patch Cord - 3Mtr	316	No.			
19	20mm PVC Conduit & accessories	82560	Mts.			
20	Video Monitoring Software	1376	License			

Authorized Signatory (Signature In full): \_\_\_\_\_

Name and title of Signatory: \_\_\_\_\_

Company Rubber Stamp: \_\_\_\_\_



## WEBEL TECHNOLOGY LIMITED

### (6) Zone 6W (Bankura, Birbhum, Purulia, Paschim Bardhaman)

Sl.	Item	Quantity	Unit	Make	Model	Part No.
1	5 MP IP Bullet network Camera (IR Range: 30 mts.)	1568	No.			
2	64 Channel NVR [8 SATA]	4	No.			
3	32 Channel NVR [4 SATA]	14	No.			
4	16 Channel NVR [2 SATA]	54	No.			
5	8TB Enterprise HDD	170	No.			
6	1 KVA UPS with 30 mnts backup	72	No.			
7	600/650 VA Line Interactive UPS	98	No.			
8	43" FHD IPS Display	72	No.			
9	L2 Un-managed 16-Port PoE Switch	98	No.			
10	L2 Un-managed 8-Port PoE Switch	72	No.			
11	Cat6 UTP Cable	94080	Mts.			
12	6U Wall Mount Indoor Networking Rack	98	No.			
13	15 U Rack with accessories	72	No.			
14	UTP Patch Panel: 24-Port	170	No.			
15	Cat6 UTP Keystone Jack White	1568	No.			
16	Cat6 UTP Patch Cord - 0.5Mtr	1568	No.			
17	Cat6 UTP Patch Cord - 2Mtr	1568	No.			
18	Cat6 IJTP Patch Cord - 3Mtr	376	No.			
19	20mm PVC Conduit & accessories	94080	Mts.			
20	Video Monitoring Software	1568	Nos.			

Authorized Signatory (Signature In full): \_\_\_\_\_

Name and title of Signatory: \_\_\_\_\_

Company Rubber Stamp: \_\_\_\_\_

# WEBEL TECHNOLOGY LIMITED

## Section – O

### **TECHNICAL SPECIFICATION COMPLIANCE STATEMENT**

**(Tender No. WTL/SE/CCTV/21-22/030 DATED 26.01.2022)**

#### **Active Component Specifications**

#### **1 Eligibility criteria for CCTV, NVR, VMS OEMs**

Sl.	General Conditions	Compliance with Document/Undertaking
1	All systems and components must be in compliance with CE/ FCC/ UL/ BIS certifications.	
2	In case the OEM is not participating directly, bidder should be an authorized reseller or channel partner of the OEM. An authorization letter from the OEM need to be submitted in original.	
3	OEM should have own online-dedicated CCTV support center available during working hours in India and a fully equipped repair and maintenance office in West Bengal or in India.	
4	CCTV OEM should have direct presence in India with a service center and toll free number.	
5	OEM should have its own factory in INDIA.	
6	OEM BRAND Should have its trade mark registration under Govt. of India	
7	OEM should have Service Centers in WB in their own name FOR last five years. This is to be supported with documentary evidence. Or MSME if startup Schedule companies should have Service Centers in West bengal or in India.	
8	OEM should have registered under MSME if startup Schedule and should have certificate. <u>Otherwise</u> , CCTV OEM company for Camera/NVR should have its own company registered in India (under Incorporation of Companies Act, 1956/ 2013) since last 10 years. Any representation through a Dealer/ Distributor/ Joint Venture/ consortium/ subsidiary shall not be treated as OEM. This has to be supported by necessary statutory documents.	
10	OEM should have ISO 9001: 2015, ISO- 27001: 2013 ISO 14001:2015 ISO- 45001:2018	
11	IP Camera, Storage, NVR etc should be ONVIF certified.	
12	Any bidder from a country which shares a land border with India will be eligible to bid in this tender only if the bidder is registered with the Competent Authority [DPIIT OM No.6/18/2019- PPD dated 23.07.2020].	
13	OEM should have supplied at least 5000 cameras in Projects in India in last 5 years.	

## WEBEL TECHNOLOGY LIMITED

14	OEM should have CMMI level 5 certification.	
15	OEM must be certified that the proposed model of CCTV product must not become obsolete/ End of Life within a period of 5 years. In case it's get EOL due to technology advancement then OEM will support with Equivalent or Higher model. The product which is nearing to the end of sales must not be proposed in the solution.	
16	MAC Address of the IP Camera and NVR should be in the name of Quoted OEM.	
17	The OEM must not be blacklisted or banned by any State/Central Government, Semi-Government or PSU and any other GOVT. organization in INDIA	

# WEBEL TECHNOLOGY LIMITED

## 1(A) VIDEO MONITORING SOFTWARE (VMS)

<b>Qty</b>
<b>Make</b>
<b>Model</b>
<b>Part No.</b>

SL	CENTRAL VIDEO MONITORING SOFTWARE (CVMS) SPECIFICATION	Compliance (Yes/No)	Ref. Page
1	It should supports adding encoding devices (IP camera/NVR/DVR)		
2	It should supports adding devices by IP address, domain name, DDNS, IP Segment & supports importing devices in batch.		
3	It should supports enabling transmission encryption using TLS (Transport Layer Security) protocol when adding a device.		
4	It should supports remote PTZ control, preset, patrol, and pattern settings.		
5	VMS should support Live View , Playback (camera/NVR/DVR), event search function		
6	Supports remote playback		
7	Supports up to 16-ch synchronous playback.		
8	Supports viewing the stream information during live view, including bitrate, frame rate, resolution.		
9	Supports instant playback, normal playback, alarm input playback, event playback, VCA playback, fisheye playback		
10	VMS should supports up to 64-window division for standard screen		
11	It should supports customizing window division		
12	It should supports live view in fisheye mode for one or more fisheye cameras, and supports Panorama, PTZ, Half Sphere, AR Half Sphere, and Cylinder modes.		
13	It should supports resuming the latest live view status after the client restarts		
14	It should supports recording both main stream and sub-stream for playback (if device supports)		
15	It should supports audible warning, pop-up live view and captured picture when alarm is triggered		
16	It should supports manual recording.		
17	It should supports recording schedule for continuous recording, event recording and command recording.		
19	It should supports two-way audio.		
20	It should supports filtering the video footage with human or vehicle detected		
21	VMS should supports searching for the historical events by event type or		

## WEBEL TECHNOLOGY LIMITED

	event details		
22	It should supports camera linkage		
23	It should supports downloading video file of devices		
24	It should supports searching recorded video files triggered by event and playing the video files, and downloading the video files		
25	It should supports exporting historical events in CSV/ excel format		
26	It should supports sending email with captured picture as the attachment when the event is triggered.		
27	It should supports adding devices by IP address, domain name, DDNS, IP Segment & supports importing devices in batch.		
28	It should supports enabling transmission encryption using TLS (Transport Layer Security) protocol when adding a device.		
29	It should supports log search and backup.		
30	It should supports importing and exporting configuration file.		
	Note: CVMS should preferably be from same OEM for better integration		

# WEBEL TECHNOLOGY LIMITED

## 1(B) 5 (FIVE) MEGA PIXEL IP NETWORK BULLET CAMERA

Qty	
Make	
Model	
Part No.	

## 5 (FIVE) MEGA PIXEL IP NETWORK BULLET CAMERA SPECIFICATION

SL	Feature	Specification	Compliance (Yes/No)	Ref. Page
1	Image Sensor	1/2.7" Progressive Scan CMOS		
2	Min. illumination	Color: 0.01Lux (AGC On), 0 Lux with IR		
3	Image Resolution	2560×1920		
4	Day & Night	IR Cut Filter		
5	Shutter speed	1/3 s to 1/100,000 s		
6	Digital Noise Reduction	3D DNR		
7	WDR	120dB WDR		
8	Lens	2.8mm / 3.6mm / 4mm (as per site requirement)		
9	IR range	min. 30m IR or higher		
10	Streaming Type	Should Support Dual streams		
		Main : 15fps (2560×1920), 25fps (2304×1296, 1920×1080)		
		Sub : 25fps (640×480, 640×360)		
11	Video Compression	H.265,H.264		
12	Bit Rate Control	CBR/VBR		
13	Image Enhancement	BLC,3D DNR, HLC		
14	Image settings	Rotate mode, saturation, brightness, contrast, sharpness adjustable by client software or web browser		
15	Day/Night Switch	Auto/Scheduled/Day/Night		
16	Network Protocol	TCP/IP, ICMP, HTTP, HTTPS, FTP, DHCP, DNS, DDNS, RTP, RTSP, PPPoE, NTP, UPnP, SMTP, IGMP, QoS, IPv6, UDP, 802.1x		
17	API	Open Network Video Interface (PROFILE S, G)		
18	User Host	20 users. 3 user levels: administrator, operator and user		
19	Preferable analytics	Line crossing detection, intrusion detection, Motion detection, ROI, video tampering		

## WEBEL TECHNOLOGY LIMITED

20	Ethernet Port	1 x RJ45 10M/100M Ethernet port		
21	Power Supply	DC12V, PoE (802.3at /af)		
22	Operating Conditions	-30° C ~ + 60° C		
23	Ingress Protection	IP67 Ingress Protection		
24	Certifications	BIS, ONVIF		

## WEBEL TECHNOLOGY LIMITED

### 1(C) 16 CHANNEL NVR

Qty	
Make	
Model	
Part No.	

### 16 CHANNEL NVR SPECIFICATION

SL	Feature	Specification	Compliance (Yes/No)	Ref. Page
1	Operating System	Embedded LINUX		
2	IP Camera Input	16 channels		
3	Two-way Talk	Should Support		
4	Audio output	1-ch		
5	Display Interface	1-HDMI, 1-VGA output for viewing		
6	Display Resolution	<b>HDMI</b> (4K) : 3840×2160, 1920×1080, 1280×1024, 1280×720 <b>VGA</b> : 1920×1080, 1280×1024, 1280×720		
7	Network Throughput	Incoming Bandwidth: 160Mbps Outgoing Bandwidth: 160Mbps		
8	Display Split	1/4/8/9/16		
9	Support multiple brands	Should Support Multi-brand (Onvif) network cameras		
10	Recording Video Compression	H.265+/H.265/H.264+/H.264		
11	Recording Resolution	8MP, 6MP, 5MP, 3MP, 1080P, 720P & etc.		
12	User Interface	GUI		
13	Motion Detection	Should Support		
14	Sync Playback	1/4/9/16		
15	Smart Phone	It should support remote monitoring over iPhone, iPad, Android Mobile.		
16	Search Mode	Time/Date, Alarm, MD & Exact search (accurate to second), Smart search		
17	Backup Mode	USB Device/Network		
18	Hard Disk	2 SATA ports with 8 TB or higher Surveillance Grade Hard disks each		
19	Network Ethernet	1x RJ-45 ports (10/100/1000Mbps)		
20	USB interface	2x USB ports or better		
21	Power Supply	AC 100V~240V / 12VDC		



## WEBEL TECHNOLOGY LIMITED

22	Power Consumption	<15W (without HDD)		
23	Working Environment	-10°C~+55°C / 10%~90%RH		
24	Certification	BIS, ONVIF		

# WEBEL TECHNOLOGY LIMITED

## 1(D) 32 CHANNEL NVR

Qty	
Make	
Model	
Part No.	

## 32 CHANNEL NVR SPECIFICATION

SL	Feature	Specification	Compliance (Yes/No)	Ref. Page
1	Operating System	Embedded LINUX		
2	IP Camera Input	32 channels		
3	Two-way Talk	Should Support		
4	Audio output	1-ch		
5	Display Interface	1-HDMI, 1-VGA output for viewing		
6	Display Resolution	<b>HDMI (4K)</b> : 3840×2160, 1920×1080, 1280×1024, 1280×720, 1024×768		
		<b>VGA</b> : 1920×1080, 1280×1024, 1280×720, 1024×768		
7	Network Throughput	Incoming Bandwidth: 256Mbps		
		Outgoing Bandwidth: 160Mbps		
8	Display Split	1/4/8/9/16/32		
9	Support multiple brands	Should Support Multi-brand (Onvif) network cameras		
10	Recording Video Compression	H.265+/H.265/H.264+/H.264		
11	Recording Resolution	8MP, 6MP, 5MP, 3MP, 1080P, 720P & etc.		
12	User Interface	GUI		
13	Motion Detection	Should Support		
14	Alarm In/ out	It should have 16-Ch In and 4-Ch Out		
15	Sync Playback	1/4/9/16		
16	Smart Phone	It should support remote monitoring over iPhone, iPad, Android Mobile.		
17	Search Mode	Time/Date, Alarm, MD & Exact search (accurate to second), Smart search		
18	Backup Mode	USB Device/Network		
19	Hard Disk	4 SATA ports with 8 TB or higher Surveillance Grade Hard disks each		
20	Network Ethernet	2x RJ-45 ports (10/100/1000Mbps)		
21	USB	3x USB ports or better		
22	Additional Interfaces	1x RS-485 (half-duplex)		
23	Power Supply	AC 100V~240V, 50/60 Hz		
24	Power Consumption	<20W (without HDD)		
25	Working Environment	-10°C~+55°C / 10%~90%RH		
26	Certification	BIS, ONVIF		

# WEBEL TECHNOLOGY LIMITED

## 1(E) 64 CHANNEL NVR

Qty	
Make	
Model	
Part No.	

### 64 CHANNEL NVR SPECIFICATION

SL	Feature	Specification	Compliance (Yes/No)	Ref. Page
1	Operating System	Embedded LINUX		
2	IP Camera Input	64 channels		
3	Two-way Talk	Should Support		
4	Audio output	2-ch		
5	Display Interface	2-HDMI, 2-VGA output for viewing		
6	Display Resolution	<b>HDMI-1</b> (4K) : 3840×2160, 1920×1080, 1280×1024, 1280×720, 1024×768 <b>HDMI-2</b> : 1920×1080 <b>VGA-1</b> : 1920×1080, 1280×1024, 1280×720, 1024×768 <b>VGA-2</b> : 1920×1080		
7	Network Throughput	Incoming Bandwidth: 320Mbps Outgoing Bandwidth: 256Mbps		
8	Display Split	1/4/8/9/16/32		
9	Support multiple brands	Should Support Multi-brand (Onvif) network cameras		
10	Recording Video Compression	H.265+, H.265, H.264+, H.264		
11	Recording Resolution	12MP, 8MP, 6MP, 4MP, 3MP, 1080P, 720P		
12	User Interface	GUI		
13	Continuous, Motion, event based Recording	Should Support		
14	Alarm In/ out	It should have 16-Ch In and 4-Ch Out		
15	Sync Playback	1/4/9/16		
16	Smart Phone	It should support remote monitoring over iPhone, iPad, Android Mobile.		

## WEBEL TECHNOLOGY LIMITED

17	Search Mode	Time/Date, Alarm, MD & Exact search (accurate to second), Smart VCA search (i.e. Line crossing detection, intrusion detection, face detection/face capture, region entrance/exiting, LPR search - if connected camera support such edge analytics)		
18	Backup Mode	USB Device/Network		
19	RAID	Should support RAID 0, RAID 1, RAID 5.		
20	ANR	NVR should support ANR technology to enhance the storage reliability when the network is disconnected.		
21	Hard Disk	8 SATA interfaces supporting hot-plug. HDD capacity : Up to 10 TB capacity for each disk		
22	eSATA	1x eSATA interface		
23	Network Ethernet	2x RJ-45 ports (10/100/1000Mbps)		
24	USB	2x USB 2.0 ; 1x USB 3.0		
25	Additional Interfaces	1x RS-485 (half-duplex), 1x RS-232		
26	Redundant Power Supply	AC 100V~240V, 50/60 Hz		
27	Power Consumption	<30W (without HDD)		
28	Working Environment	-10°C~+55°C / 10%~90%RH		
29	Certification	BIS, ONVIF		

## WEBEL TECHNOLOGY LIMITED

### 2 Eligibility criteria for Surveillance grade SATA HDD OEM

Sl.	General Conditions	Compliance with Document/Undertaking
1	Hard Disk OEM should have presence in India for 5 years or more	
2	In case the OEM is not participating directly, bidder should be an authorized reseller or channel partner of the OEM. An authorization letter from the OEM need to be submitted in original.	
3	If Hard disc gets crashed then Hard disc OEM should recover the data with replacement of Hard disc within warranty period.	
4	OEM should have ISO 9001: 2015,	
5	Any bidder from a country which shares a land border with India will be eligible to bid in this tender only if the bidder is registered with the Competent Authority [DPIIT OM No.6/18/2019- PPD dated 23.07.2020].	
6	The OEM must not be blacklisted or banned by any State/Central Government, Semi-Government or PSU and any other GOVT. organization in INDIA	

## WEBEL TECHNOLOGY LIMITED

### 2(A) 8 TB SURVEILLANCE GRADE SATA HDD

Qty	
Make	
Model	
Part No.	

### 8 TB SURVEILLANCE GRADE SATA HDD SPECIFICATION

SL	Feature	Specification	Compliance (Yes/No)	Ref. Page
1	Capacity	8TB		
2	Interface	SATA 6 Gb/s		
3	Recording Technology	CMR		
4	Drive Design	Air		
5	<b>Features and Performance</b>			
6	Drive Bays Supported	16+		
7	AI Channels	32		
8	AI Real Time Capture Events/Sec	Up to 120		
9	AI Real Time Compare Events/Sec	Up to 96		
10	HD Cameras Supported	Up to 64		
11	RV Sensors	Yes		
12	Max. Sustained Transfer Rate OD (MB/s)	245MB/s		
13	cache (MB)	256		
14	<b>Reliability/Data Integrity</b>			
15	Tarnish Resistant	Yes		
16	Load/Unload Cycles	6,00,000		
17	Non-recoverable Read Errors Rate, Max	1 per 10E15		
18	Power-On Hours per year	8,760		
19	Workload Rate Limit (WRL) <sup>4</sup>	550		
20	Mean Time Between Failures (MTBF) (hours)	2,000,000 hr		
21	Warranty, Limited (years) <sup>5</sup>	5		
22	Rescue Data Recovery Services (years) <sup>6</sup>	5		
23	<b>Power Management</b>			
24	Startup Current, Typical (12V,A)	2		
25	Average Operating Power (W)	10.1 w		
26	Idling Average (W)	7.8 W		

## WEBEL TECHNOLOGY LIMITED

27	Standby Mode/Sleep Mode,Typical(W)	111		
28	Voltage Tolerance (5 V)	±5%		
29	Voltage Tolerance (12 V)	±10%		
30	<b>Environmental/Temperature</b>			
31	Operating (Ambient, min °C)	0		
32	Operating (drive reported, max 'C)	65		
33	Non-operating (ambient, min'C)	-40		
34	<b>Physical</b>			
35	Height (mm/in, max)	26.11 mm/ 1.028 in		
36	Width (mm/in, max)	101.85 mm/4.01 in		
37	Depth (mm/in, max)	146.99 mm/5.787 in		
38	Weight (g/lb,typical)	720 g/1.587 lb		

## WEBEL TECHNOLOGY LIMITED

### 3 Eligibility criteria for Active Network Item's OEM

Sl.	General Conditions	Compliance with Document
1	The active networking OEM should be top five companies in India for Ethernet switch market share ( ports ).	
2	The Active networking OEM for each products or Technology quoted should be in the business of that product or solution or Technology for last 25 years as on the date of release of the EOI.	
3	The Active networking OEM should have a local own service center within the state of installation and should have technical assistance center.	
4	The Active networking OEM for the all active network items should have a registered office in India and should directly present for last 25 years in India, from date of RFP publication.	
5	The Active networking OEM for all active components should give a declaration that products or technology quoted are neither end of sale nor end of life as on the date of installation and commissioning and are not end of support till the successful completion of the project.	
6	The active networking OEM should have valid ISO 9001 & ISO 14001 && ISO 45001 for design & development for wired & wireless networking products.	
7	The active networking OEM should have Average Annual Financial Turnover not less than 500 Crores for their networking equipment business in India only for the last each five financial years	
8	The Active OEM must not be blacklisted or banned by any State/Central Government, Semi-Government or PSU and any other GOVT. organization in INDIA and Globally.	



## WEBEL TECHNOLOGY LIMITED

### 3 (A) 16 PORT PoE SWITCH

Qty	
Make	
Model	
Part No.	

### 16 PORT PoE SWITCH SPECIFICATION

SL.	Specification	Compliance (Yes/No)	Ref. Page
1	Layer 2 Switch having 16 X 10/100/1000BaseT PoE Ports & 2 X 1G SFP slots (Transceivers of same make should be loaded to get 2x 1000BaseT uplink ports)		
2	Switching Capacity should be minimum 36Gbps		
3	Packet Forwarding Rate should be minimum 26Mpps for 64- byte packet size		
4	The switch should have feature to isolate port-1 to Port-16 from each other to prevents network storm		
5	The switch should support both IEEE 802.3af (PoE) & IEEE 802.3at (PoE+)		
6	The switch should support minimum PoE power budget of 150 watt.		
7	The switch should have minimum 6KV surge protection		
8	The switch should support auto MDI/MDI-X adjustment on all ports		
9	The switch should support Power over ethernet up to 250mtr distance @ 10Mbps in minimum 8 ports.		
10	The switch should have QoS feature to prioritize video data.		
11	All type of switches should be from same make.		
12	The switch should support operating temperature 0 °C to 40 °C		
13	The switch should support operating humidity 0% to 90%		
14	The active networking OEM should have valid ISO 9001 & ISO 14001 && ISO 45001 for design & development for wired & wireless networking products.		

## WEBEL TECHNOLOGY LIMITED

### 3 (B) 8 PORT PoE SWITCH

Qty	
Make	
Model	
Part No.	

### 8 PORT PoE SWITCH SPECIFICATION

SL.	Specification	Compliance (Yes/No)	Ref. Page
1	Layer 2 Switch having 8 X 10/100/1000BaseT PoE Ports & 2 X 10/100/1000BaseT uplink ports		
2	Switching Capacity should be minimum 20Gbps		
3	Packet Forwarding Rate should be minimum 14.88Mpps for 64- byte packet size		
4	The switch should have feature to isolate port-1 to Port-8 from each other to prevents network storm		
5	The switch should support both IEEE 802.3af (PoE) & IEEE 802.3at (PoE+)		
6	The switch should support minimum PoE power budget of 120 watt.		
7	The switch should have minimum 6KV surge protection		
8	The switch should support auto MDI/MDI-X adjustment on all ports		
9	The switch should support Power over ethernet up to 250mtr distance @ 10Mbps in minimum 8 ports.		
10	The switch should have QoS feature to prioritize video data.		
11	All type of switches should be from same make.		
12	The switch should support operating temperature 0 °C to 40 °C		
13	The switch should support operating humidity 0% to 90%		
14	The active networking OEM should have valid ISO 9001 & ISO 14001 && ISO 45001 for design & development for wired & wireless networking products.		

## WEBEL TECHNOLOGY LIMITED

### 4. Eligibility criteria for Passive items (CAT 6 UTP cable & other network accessories) OEM

Sl.	General Conditions	Compliance with Document
1	Cat6 UTP cable OEM offered must be in steady profitable business in India at-least 25 years from the date of the RFP. Incorporation certificate to be submitted.	
2	Cat6 UTP cable OEM Should is ISO 9001, ISO14001 and OHS (ISO 45001:2018) certified for design, Development for LAN and WAN product.	
3	OEM Brand and company together presence in India should be at-least for last 25 years from the date of the RFP.	
4	All passive components must be supplied from single OEM.	
5	The OEM must not be blacklisted or banned by any State/Central Government, Semi-Government or PSU and any other GOVT. organization in INDIA and Globally.	

## WEBEL TECHNOLOGY LIMITED

### 4 (A) CAT 6 UTP CABLE

Qty	
Make	
Model	
Part No.	

### CAT 6 UTP CABLE SPECIFICATION

SL.	Specification	Compliance (Yes/No)	Ref. Page
1	CAT 6 Unshielded Twisted Pair 4 pair cable shall be compliant with ANSI/TIA-568-C.2 Schedule 6 & ISO 11801 Class E.		
2	The 4 pair Unshielded Twisted Pair cable shall be UL Listed, ETL Verified		
3	All CAT 6 cables shall meet or exceed the following characteristics:		
4	Mechanical Characteristics:		
5	Construction: 4 twisted pairs separated by internal X shaped, 4 channel, full separator. Half shall not be accepted.		
6	Conductor dia: 23 AWG		
7	Insulation: High density polyethylene		
8	Pairing: Two insulated conductor twisted together		
9	No.of Pair: 4 pair		
10	Color of sheath: FR-PVC GREY- Single sheath		
11	Rip Cord should be available		
12	Sequential meter marking should be available		
13	Temperature Rating: (- 20 to +60 C)		
14	Packing : 305 Mtrs.		
15	Low Frequency Electrical Parameter:		
16	Conductor Resistance (DC): $\leq 9.38$ OHMS/100 MTR		
17	Resistance Unbalance: 5% Max		
18	Mutual Capacitance: $< 5.6$ nF/100 mtrs.		
19	Capacitance Unbalance: 330pF/100M		
20	Nominal Velocity of Propagation: 69%		
21	Impedance: $100 \pm 15\%$ OHMS		
22	Worst Case cable skew : 45ns		

## WEBEL TECHNOLOGY LIMITED

### 4 (B) NETWORK ACCESSORIES

Qty	
Make	
Model	
Part No.	

#### NETWORK ACCESSORIES SPECIFICATION

SL.	Specification	Compliance (Yes/No)	Ref. Page
1	24-Port unloaded UTP Rackmount Patch Panel loaded with required number of keystone Jack		
2	Keystone Jack Specifications:		
	Plastic Housing: Polycarbonate, UL94V-2 rated or equivalent		
	Operating Life: Minimum 750 insertion cycles		
	Contact Material: Phosphor Bronze with nickel plated		
	Contact Plating: 50 µinches gold on plug contact area		
	IDC : Housing PC , UL 94 V-2, 568A/B configuration		
	Operating Life: Minimum 200 Re-terminations		
	IDC Contact Plating: Phosphor bronze with tin plated		
3	Keystone of I/O should be UL Listed.		
4	Single Port Faceplate ( should be same OEM make of Keystone )		
5	Back box should be of same make as keystone jack & face plate.		
6	Cat6 UTP Factory Crimped Patch Cord & with factory moulded boot (0.5Mtr, 2Mtr length, 3 Mtr Length)		

## WEBEL TECHNOLOGY LIMITED

### 5 Eligibility criteria for Network Rack OEM

Sl.	General Conditions	Compliance with Document
1	The Rack OEM should have valid ISO 9001 & ISO 14001 && ISO 45001 for design & development of networking products. Documents need to be submitted along with the tender.	
2	The Rack OEM should be in the business in India for last 25 years as on the date of release of the RFP. Document need to be submitted.	
3	The Rack OEM should have Average Annual Financial Turnover not less than 250 Crores in India for each of the last five financial years. Document need to be submitted.	
4	The Rack OEM should have their own sales office & service / own RMA center in West Bengal. OEM declaration / document need to be submitted."	
5	Rack OEM should have one single order of rack for min. 1000 nos. from any Govt Dept / PSU / Govt. undertaking within last three financial year from the date of RFP. Document need to be submitted	
6	The OEM must not be blacklisted or banned by any State/Central Government, Semi-Government or PSU and any other GOVT. organization in INDIA	

## WEBEL TECHNOLOGY LIMITED

### 5 (A) 15 U RACK

Qty	
Make	
Model	
Part No.	

### 15 U RACK SPECIFICATION

SL.	Specification	Compliance (Yes/No)	Ref. Page
1	15U, 19" 550mm Width, 600mm Depth, Wall Mount Indoor Networking Rack		
2	It should confirm to DIN 41494 or equivalent standard		
3	It should be of CKD construction with steel frame		
4	Lockable tough ended glass front door		
5	19" mounting angle made of formed steel		
6	Powdered coated standard finish		
7	Top & Bottom cover with vented & cable entry exit cut outs		
8	2 pair of 19" mounting rails		
9	1U Cable Manager		
10	Roof Mounted Fan Unit		
11	230V AC, 6 way, 5 Amp Power Distribution Unit		
12	Mounting Hardware		

## WEBEL TECHNOLOGY LIMITED

### 5 (B) 6 U RACK SPECIFICATION

Qty	
Make	
Model	
Part No.	

### 6 U RACK SPECIFICATION

SL.	Specification	Compliance (Yes/No)	Ref. Page
1	6U, 19" 500mm Width, 450mm Depth, Wall Mount Indoor Networking Rack		
2	It should confirm to DIN 41494 or equivalent standard		
3	It should be of CKD construction with steel frame		
4	Lockable tough ended glass front door		
5	19" mounting angle made of formed steel		
6	Powdered coated standard finish		
7	Top & Bottom cover with vented & cable entry exit cut outs		
8	2 pair of 19" mounting rails		
9	1U Cable Manager		
10	Roof Mounted Fan Unit		
11	230V AC, 6 way, 5 Amp Power Distribution Unit		
12	Mounting Hardware		



## WEBEL TECHNOLOGY LIMITED

### 6, Eligibility criteria for UPS OEM

Sl.	General Conditions	Compliance with Document
1	The UPS OEM Should be an Indian Manufacturer with direct presence in India for a minimum period of 10 years.	
2	The UPS OEM should have a single installation base of 1/2/3 KVA rating UPS System of min 1000 unit with State Government/Central Government or PSU customers in India.	
3	OEM shall have ISO 9001, 27001 and 14001 certified manufacturing facility in India.	
4	The OEM shall have NABL approved lab certification.	
5	OEM product should qualify Make in India as per 2017/ 2020 DIPP guidelines. (Documentary evidence and certificates must be enclosed)	
6	The OEM must not be blacklisted or banned by any State/Central Government, Semi-Government or PSU and any other GOVT. organization in INDIA	

## WEBEL TECHNOLOGY LIMITED

### 6 (A) 600/650 VA LINE INRERACTIVE UPS

Qty	
Make	
Model	
Part No.	

### 600/650 VA LINE INRERACTIVE UPS SPEC

SL.	Specification	Compliance (Yes/No)	Ref. Page
1	600VA/650VA UPS Line interactive		
2	With 1 number of 12V/7AH SMF Battery or better		
3	Minimum 3 battery backup output connections (3-pin 6A),		
4	Surge protection feature, circuit breaker reset switch, LED status display and Audible Alarm feature.		
5	Automatic Voltage Regulator (AVR) with Wide Input Voltage Range 145-290V, Transfer Time - 10 ms typical : 12 ms maximum		
6	Minimum 15/20 mins backup under load of 350 W att max.		
7	Generator Compatible		

### 6 (B) 1 KVA ONLINE UPS

Qty	
Make	
Model	
Part No.	

### 1 KVA ONLINE UPS SPEC

SL.	Specification	Compliance (Yes/No)	Ref. Page
1	Compact Design Line Interactive UPS with Load Capacity of 600Watts / 1000VA or higher		
2	Five 6A, 2/3 Pin Indian Power Socket (4 Battery Backed-up & Surge Protected plus 1 Surge Only Protected Outlet)		
3	Automatic Voltage Regulator (AVR) with Wide Input Voltage Range 145-290V		
4	2x7.2Ah Battery for Back-Up time of 30 mints at full load		
5	Generator Compatible		

## WEBEL TECHNOLOGY LIMITED

### (7) Eligibility criteria for Display OEM

General Conditions	Compliance with Document
OEM should have presence in India for more than 10 years	
The manufacturer should have minimum annual turnover of Rupees 500 Crores (each year) during last three financial years.	
OEM should have its legal Office in West Bengal	
OEM should have complete direct service set-up in West Bengal with a service team of minimum 2 trained Service Manager/Engineers on OEM's payroll. They should have either Bachelor / Diploma degree	
OEM Should have ISO 9001:2015 & BS OHSAS 18001:2007 or ISO45001:2018 certifications.	
The OEM must not be blacklisted or banned by any State/Central Government, Semi-Government or PSU and any other GOVT. organization in INDIA	

## WEBEL TECHNOLOGY LIMITED

### 7 (A) 43" DISPLAY PANEL UNIT

Qty	
Make	
Model	
Part No.	

### 32" DISPLAY PANEL UNIT SPEC

SL	Feature	Specification	Compliance (Yes/No)	Ref. Page
1	Size:	43" or higher		
2	Panel Technology:	IPS/VA		
3	Resolution:	1920x1080		
4	Brightness:	400nits		
5	Contrast Ratio:	1100:1 or more		
6	Color Depth:	1.07 Billion Colours		
7	Operation Hours:	24x7 Hrs.		
8	Orientation:	Portrait / Landscape		
9	Connectivity:	Inputs: HDMI (3, HDCP 2.2), USB 2.0 (Type A)		
10	Connectivity:	Outputs: Audio Out, Built-in Speaker: 2x10w		
11	Special Features:	Built-in Wi-Fi, Temperature Sensor, Auto Brightness Sensor, Local Key Operation, webOS 6.0/Tizen, Embedded CMS (Local Contents Scheduling, Group Manager), USB Plug & Play, Fail Over, Background Image (Bootimg Logo Image, No Signal Image), Screen Share, Play via URL, Setting Data Cloning, SNMP Support, Smart Energy Saving, Wake on LAN, Beacon or equivalent		
12	Certification:	CB, FCC Class "A"/CE		
13	Typical Power Consumption:	55W or less		

Authorized Signatory (Signature In full): \_\_\_\_\_

Name and title of Signatory: \_\_\_\_\_

Stamp of the Company: \_\_\_\_\_

# WEBEL TECHNOLOGY LIMITED

## SECTION – P

### MANUFACTURER'S AUTHORIZATION FORM

Date:

To  
Webel Technology limited  
Plot-5, Block-BP, Sector-V  
Salt Lake  
Kolkata-700 091

Ref: Tender No.: WTL/SE/CCTV/21-22/003 DATED 26.01.2022\_

WHEREAS \_\_\_\_\_ who are official producers of  
\_\_\_\_\_ and having production facilities at  
\_\_\_\_\_ do hereby authorize  
\_\_\_\_\_ located at  
\_\_\_\_\_ (hereinafter, the "Bidder") to submit a bid of the  
following Products produced by us, for the Supply Requirements associated with the above Invitation for Bids.

1. \_\_\_\_\_
2. \_\_\_\_\_

When resold by \_\_\_\_\_, these products are subject to onsite comprehensive warranty from the date of final acceptance of the system by the customer.

We assure you that in the event of \_\_\_\_\_, not being able to fulfill its obligation as our Service Provider in respect of our standard Warranty Terms we would continue to meet our Warranty Terms through alternate arrangements.

We also confirm that \_\_\_\_\_ is our authorized service provider/system integrator and can hence provide maintenance and upgrade support for our products.

We also confirm that the products quoted are on our current product list and are not likely to be discontinued with in from the day of this letter. We assure availability of spares for the products for the next five years after warranty.

We also confirm that the material will be delivered within six weeks from the date of placement of confirmed order.

We also confirm that adequate spare product will be kept available with the SI for 3 years.

Name \_\_\_\_\_ In the capacity of \_\_\_\_\_

Signed \_\_\_\_\_

Duly authorized to sign the authorization for and on behalf of \_\_\_\_\_

Dated on \_\_\_\_\_ day of \_\_\_\_\_ 2022

**Note:** This letter of authority must be on the letterhead of the Manufacturer and duly signed by an authorized signatory.

# WEBEL TECHNOLOGY LIMITED

## SECTION - R

### NIT DECLARATION FOR BIDDER

(Bidders are requested to furnish the Format given in this section, filling the entire Blank and to be submitted on Bidder's Letter Head)

To  
**Webel Technology Limited**  
**Plot – 5, Block – BP, Sector - V,**  
**Salt Lake City,**  
**Kolkata – 700091.**

**Sub: Supply, Installation, Testing, Commissioning (SITC) and Maintenance of CCTV surveillance systems in Govt. sponsored / aided Girls' and Co-Ed Secondary/Higher Secondary Schools and Girls' Hostels in West Bengal, Under Directorate of School Education, Govt.**

Dear Sir,

We the undersigned bidder/(s) declare that we have read and examined in details the specifications and other documents of the subject Tender No. WTL/SE/CCTV/21-22/030 DATED 26.01.2022. Supply, Installation, Testing, Commissioning (SITC) and Maintenance of CCTV surveillance systems in Govt. sponsored / aided Girls' and Co-Ed Secondary/Higher Secondary Schools and Girls' Hostels in West Bengal, Under Directorate of School Education, Govt. of West Bengal published by Webel Technology Limited in e-Tender website.

We further declare that we have agreed and accepted all the clauses / sub-clauses / formats / terms & conditions other requirements related to the said tender and we will abide by the same as mentioned in the tender document while participating and executing the said tender.

Thanking you, we remain

Yours faithfully

.....  
Signature

.....  
Name in full

.....  
Designation

.....  
Company Stamp

Dated, this .....day of .....2021

# WEBEL TECHNOLOGY LIMITED

## SECTION - S

### DECLARATION OF ELIGIBILITY CRITERIA

(Tender No. WTL/SE/CCTV/21-22/030 DATED 26.01.2022)

Sl. No.	Criteria	Document Submitted	Reference Document
1	The bidder must be a company registered under Companies Act, 1956/2013 or Partnership or LLP or OPC or Proprietary Firm. Documentary (Certificate of incorporation/Relevant document) evidence to be submitted.	Yes/No	
2	The bidder must be a System Integrator in IT/ ITeS/ ICT sector. Relevant document to be submitted.	Yes/No	
3	The bidder should have been operating for the last 15 years in India. Certificate of Incorporation and/ or Certificate of Commencement of Business issued by the Registrar of Companies/ Partnership Registration/ sole proprietorship registration under the Shops & Establishments Act to be submitted.	Yes/No	
4	The bidder must have their Registered/ Branch office in West Bengal. Valid trade license and local GST Registration Certificate are to be submitted.	Yes/No	
5	The bidder should have valid GST Registration Certificate & PAN. Bidder shall have to submit photocopy of the documents.	Yes/No	
6	Bidder should have own local call center number. OEM Call Centre number will not be treated as bidder's call centre number. Call Center details for bidder with number & detailed to be submitted. Bidder shall have to submit the Complain/Call escalation matrix in their own letterhead with undertaking.	Yes/No	
7	<p>The bidder shall have executed "Similar Nature" of single order an amount not less than <b>Rs.10.00 Crore</b> in last 05 (Five) financial years (considering FY – 2015-2016, 2016-2017, 2017-18, 2018-19, 2019-20) in Government Department/PSU/Autonomous Body. References order copy with the completion certificate for the project to be provided.</p> <p style="text-align: center;">OR</p> <p>The bidder shall have executed "Similar Nature" of two orders in total amount not less than <b>Rs.11.00 Crore</b> in last 10 (Ten) financial years (considering FY period from 2010-2011 TO 2019-20) in Government Department/PSU/Autonomous Body. References order copy with the completion certificate for the project to be provided.</p> <p style="text-align: center;">OR</p> <p>The bidder shall have executed "Similar Nature" of two orders in total amount not less than <b>Rs.12.00 Crore</b> in last 10 (Ten) financial years (considering FY period from 2010-2011 TO 2019-20) in Government Department/PSU/Autonomous Body. References order copy with the completion certificate for the project to be provided.</p>	Yes/No	

## WEBEL TECHNOLOGY LIMITED

8	The bidder should have a minimum annual turnover of not less than Rs. 12.00 Crore in the last financial year (2019-20)). Bidder shall have to submit Audited Balance Sheet / Audited Accounts / Auditor Certificate in support of their claim.	Yes/No	
9	The bidder should have a minimum total annual turnover of not less than Rs. 45.00 Crore in the last three financial years (considering FY -2017-18, 2018-19, 2019-20)). Bidder shall have to submit Audited Balance Sheet / Audited Accounts / Auditor Certificate in support of their claim.	Yes/No	
10	The bidder must have completed Supply, Installation, Testing and Commissioning of any CCTV Surveillance project, worth all-inclusive cumulative amount of Rs. 1 crores only, in any year during last five financial years for any Govt. Departments or Public Sector Undertakings.		
11	The bidder shall have Quality Certificate (ISO 9001:2015). The bidder has to ensure that the certificate remains valid during the life cycle of the project. Copy of Certificate to be submitted.	Yes/No	
12	The bidder must submit the Manufacturers Authentication Form (MAF) for Camera, Storage, Computer, Display, Networking items (Active & Passive) and UPS as per prescribed format enclosed (Section - P), along with Technical Compliance statements. Without these documents the offer will be treated as non-responsive and summarily rejected.	Yes/No	
13	The bidder shall not have been blacklisted by any State/Central Government or PSU Organization or bilateral / multilateral funding agencies for breach of ethical conduct or fraudulent practices as on date of submission of the proposal (as per DIT guidance note issued on 26-Dec-2011). Declaration on bidder's letter head to be submitted.	Yes/No	
14	The bidder shall submit Bid Form (Section – G) duly signed by the authorized signatory of the company as per the format enclosed. Deviation in format may not be accepted.	Yes/No	
15	Bidder shall submit NIT Declaration (Section – R) duly signed by the authorized signatory of the company as per the format. Deviation in format may not be accepted.	Yes/No	

Authorized Signatory (Signature In full): \_\_\_\_\_

Name and title of Signatory: \_\_\_\_\_

Stamp of Company: \_\_\_\_\_



**WEBEL TECHNOLOGY LIMITED**

## SECTION – T

### FORMAT FOR LIST OF CLIENTS OF SIMILAR ORDERS

(Tender No. WTL/SE/CCTV/21-22/030 DATED XX.25.01.2022)

[illegible]

Authorized Signatory (Signature In full): \_\_\_\_\_

Name and title of Signatory: \_\_\_\_\_

Company Rubber Stamp: \_\_\_\_\_

# WEBEL TECHNOLOGY LIMITED

## SECTION – U

### LIST OF LOCATIONS

The list of sites as per the Zones are as provided below. The list of sites are tentative and may be changed during final implementation of the project.

#### 2. List of Sites – Zone 1S

SL NO	DISTRICT	NAME OF SCHOOL	Hostel/ School	NUMBER OF CAMERAS	Type
1	JHARGRAM	GOVT. MODEL SCHOOL, GOPIBALLAVPUR-I	Hostel	16	Model
2	JHARGRAM	GOVT. MODEL SCHOOL, NAYAGRAM	Hostel	16	Model
3	JHARGRAM	NEW INTEGRATED GOVT. SCHOOL, BHULAGERIA- BINPUR-I	Hostel	16	NIGS
4	JHARGRAM	NEW INTEGRATED GOVT. SCHOOL, DARPASILA- BINPUR-II	Hostel	16	NIGS
5	JHARGRAM	NEW INTEGRATED GOVT. SCHOOL, HATIASOLE- SANKRAIL	Hostel	16	NIGS
6	JHARGRAM	NEW INTEGRATED GOVT. SCHOOL, SANKHAKULA- BINPUR-I	Hostel	16	NIGS
7	JHARGRAM	NEW INTEGRATED GOVT. SCHOOL, BARCHALTA- BINPUR-I	Hostel	16	NIGS
8	JHARGRAM	NEW INTEGRATED GOVT. SCHOOL, SALIKA- JAMBONI	Hostel	16	NIGS
9	JHARGRAM	NEW INTEGRATED GOVT. SCHOOL, JORAKUSUM- GOPIBALLAVPUR-II	Hostel	16	NIGS
10	PASCHIM MEDINIPUR	NEW INTEGRATED GOVT. SCHOOL, MIRGA- SALBONI	Hostel	16	NIGS
11	PASCHIM MEDINIPUR	NEW INTEGRATED GOVT. SCHOOL, KHASGANJAL, MEDINIPUR SADAR	Hostel	16	NIGS
12	PASCHIM MEDINIPUR	NEW INTEGRATED GOVT. SCHOOL, BARIBET, GARBETA-II	Hostel	16	NIGS
13	JHARGRAM	LALGARH S.M.B.VIDYALAYA	Hostel	16	LWE
14	JHARGRAM	BANPUKHURIA ALHADI HIGH SCHOOL	Hostel	16	LWE
15	JHARGRAM	BELPAHARI R.G. HIGH SCHOOL	Hostel	16	LWE
16	JHARGRAM	SILDA SRI SARADHAMANI VIDYAPITH	Hostel	16	LWE
17	JHARGRAM	TAPSIA GIRLS HIGH SCHOOL	Hostel	16	LWE
18	JHARGRAM	AMBI B.M. GIRLS JR. HIGH SCHOOL	Hostel	16	LWE
19	JHARGRAM	DUDKUNDI C.B. VIDYALAYA	Hostel	16	LWE
20	JHARGRAM	MANIKPRA BALIKA VIDYALAYA	Hostel	16	LWE
21	JHARGRAM	SEVAYATAN BALIKA VIDYALAYA	Hostel	16	LWE
22	JHARGRAM	JHARGRAM NANIBALA BALIKA VIDYALAYA	Hostel	16	LWE
23	JHARGRAM	NAYAGRAM THANA BALIKA VIDYAPITH	Hostel	16	LWE
24	JHARGRAM	KULTIKRI GIRLS HIGH SCHOOL	Hostel	16	LWE
25	JHARGRAM	ROHINI BALIKA VIDYALAYA	Hostel	16	LWE
26	PASCHIM MEDINIPUR	GODAPIASAL C.B. VIDYALAYA	Hostel	16	LWE
27	PASCHIM MEDINIPUR	SALBONI NICHU M. GIRLS' HIGH SCHOOL	Hostel	16	LWE

## WEBEL TECHNOLOGY LIMITED

28	PASCHIM MEDINIPUR	GOALTORE GIRLS HIGH SCHOOL	Hostel	16	LWE
29	PASCHIM MEDINIPUR	HOOMGARH GIRLS HIGH SCHOOL	Hostel	16	LWE
30	PURBA MEDINIPUR	MAHISADAL GAYESWARI GIRLS' HIGH	Hostel	16	Non-LWE
31	PURBA MEDINIPUR	NANDIGRAM B.M.GIRLS' HIGH SCHOOL	Hostel	16	Non-LWE
32	PASCHIM MEDINIPUR	SRIMA BALIKA V.H.S.U. PRY	Hostel	16	Non-LWE
33	PASCHIM MEDINIPUR	MANSUKA L.N. (HS) SCHOOL U.PRY	Hostel	16	Non-LWE
34	PASCHIM MEDINIPUR	CHANDRA HS U.PRY	Hostel	16	Non-LWE
35	PASCHIM MEDINIPUR	GURGURIPAL HS U.PRY	Hostel	16	Non-LWE
36	PASCHIM MEDINIPUR	PANCHKHURI D.B.H. SCHOOL U.PRY	Hostel	16	Non-LWE
37	PASCHIM MEDINIPUR	NACHIPUR ADIBASI HS U.PRY	Hostel	16	Non-LWE
38	PASCHIM MEDINIPUR	ANANDAPUR S.K.HS U.PRY	Hostel	16	Non-LWE
39	PASCHIM MEDINIPUR	BILASBARH ANGUA HS U.PRY	Hostel	16	Non-LWE
40	PASCHIM MEDINIPUR	KESHPUR GIRLS HS U.PRY	Hostel	16	Non-LWE
41	PASCHIM MEDINIPUR	KHIRPAI DR. S.K.B.M.H.PRY	Hostel	16	Non-LWE
42	PASCHIM MEDINIPUR	MOHANPUR USHA SASHI HS U.PRY	Hostel	16	Non-LWE
43	PASCHIM MEDINIPUR	BARMOHANPUR SITANSHU BALIKA U.PRY	Hostel	16	Non-LWE
44	PASCHIM MEDINIPUR	BELDA PRAVATI BALIKA U.PRY	Hostel	16	Non-LWE
45	PASCHIM MEDINIPUR	NARAYANGARH B.VIDYAPITH U.PRY	Hostel	16	Non-LWE
46	PASCHIM MEDINIPUR	PIRAKATA HS U.PRY	Hostel	16	Non-LWE
47	PASCHIM MEDINIPUR	BHEMUA R.N.G. SCHOOL U.PRY	Hostel	16	Non-LWE
48	PASCHIM MEDINIPUR	CHHOTAKHELINA S.S.V.U.PRY	Hostel	16	Non-LWE
49	PASCHIM MEDINIPUR	JALCHAK BALIKA V. U. PRY	Hostel	16	Non-LWE
50	PASCHIM MEDINIPUR	PINGLA J.H.M.GIRLS JR.H.U.PRY	Hostel	16	Non-LWE
51	PASCHIM MEDINIPUR	RAMJIBANPUR BALIKA HS U.PRY	Hostel	16	Non-LWE
52	PASCHIM MEDINIPUR	HARIRHAT A.S.G.H. SCHOOL U.PRY	Hostel	16	Non-LWE
53	PASCHIM MEDINIPUR	MOHAR D.B.K., VIDYAYATAN U.PRY	Hostel	16	Non-LWE
54	PASCHIM MEDINIPUR	SHYAMSUNDAR R.K.V.U.PRY	Hostel	16	Non-LWE
55	PASCHIM MEDINIPUR	JARA JAGANMOHINI B.V.U.PRY	Hostel	16	Non-LWE
56	PASCHIM MEDINIPUR	PALASHCHABRI N.H.S.U.PRY	Hostel	16	Non-LWE

## WEBEL TECHNOLOGY LIMITED

57	PASCHIM MEDINIPUR	MENKAPUR K.P.V.U.PRY	Hostel	16	Non-LWE
58	PASCHIM MEDINIPUR	PUYAN P.L.KANYA VIDYAPITH	Hostel	16	Non-LWE
59	PASCHIM MEDINIPUR	SHABRA R.K.BIDYABHAWAN U.PRY	Hostel	16	Non-LWE
60	PASCHIM MEDINIPUR	NARAJOLE L.K.BALIKA V.U.PRY	Hostel	16	Non-LWE
61	PASCHIM MEDINIPUR	RAJNAGAR UNION H.S. U. PRY	Hostel	16	Non-LWE
62	PASCHIM MEDINIPUR	SAGARPUR B.V. U.PRY	Hostel	16	Non-LWE
63	PASCHIM MEDINIPUR	JOTEGHANASHYAM H.S. U.PRY	Hostel	16	Non-LWE
64	PASCHIM MEDINIPUR	KHEPUTNANIBALA B.B.G.H.S.U.PRY	Hostel	16	Non-LWE
65	PASCHIM MEDINIPUR	SREE BORA GIRLS H.SCHOOL	Hostel	16	Non-LWE
66	PASCHIM MEDINIPUR	DEBRA H.S. V MANDIR U.PRY	Hostel	16	Non-LWE
67	PASCHIM MEDINIPUR	LOWADA BALIKA V.U.PRY	Hostel	16	Non-LWE
68	PASCHIM MEDINIPUR	JHARBONI S.M. HIGH SCHOOL	Hostel	16	Non-LWE
69	PASCHIM MEDINIPUR	MONGLAPOTA HS.U.PRY	Hostel	16	Non-LWE
70	PASCHIM MEDINIPUR	ANDHARNAYAN H.S. SCHOOL U.PRY	Hostel	16	Non-LWE
71	PASCHIM MEDINIPUR	CHANDRAKONA R G H SCHOOL U.PRY	Hostel	16	Non-LWE
72	PASCHIM MEDINIPUR	BASANTAPUR JHARESWAR BANI BHABAN	Hostel	16	Non-LWE
73	JHARGRAM	PANCHKAHANIA H.S. U.PRY	Hostel	16	Non-LWE
74	JHARGRAM	SARIA TRIBA H.S.U.PRY	Hostel	16	Non-LWE
75	JHARGRAM	KHARBANDHI SC. HS U.PRY	Hostel	16	Non-LWE
76	JHARGRAM	NAYAGRAM BANI BIDYAPITH U.PRY	Hostel	16	Non-LWE
77	JHARGRAM	NAYAGRAM THANA BALIKA VIDYAPITH	Hostel	16	Non-LWE
78	JHARGRAM	BINPUR HIGH SCHOOL U.PRY	Hostel	16	Non-LWE
79	JHARGRAM	DAHJURI MAHATMA VIDYAPITH	Hostel	16	Non-LWE
80	JHARGRAM	KANTAPAHARI VV VIDYAPITH	Hostel	16	Non-LWE
81	JHARGRAM	BUNDHGORA A.(X-CLASS) VDL U.PRY	Hostel	16	Non-LWE
82	PURBA MEDINIPUR	CONTAI HINDU GIRLS' SCHOOL	School	32	Girls
83	PURBA MEDINIPUR	MAHISADAL GAYESWARI GIRLS' HIGH SCHOOL (H.S.)	School	32	Girls
84	PURBA MEDINIPUR	RAJKUMARI SANTANAMOYEE GIRLS' HIGH SCHOOL	School	64	Girls
85	PURBA MEDINIPUR	PANSKURA GIRLS' HIGH SCHOOL(H.S)	School	32	Girls
86	PURBA MEDINIPUR	BAJITPUR SARADAMANI BALIKA VID (H.S)	School	32	Girls
87	PURBA MEDINIPUR	KOLA UNION JOGENDRA GIRLS' HIGH	School	32	Girls

## WEBEL TECHNOLOGY LIMITED

		SCHOOL			
88	PASCHIM MEDINIPUR	ALIGUNJ R.R.B.VIDYALAYA U.PRY	School	64	Girls
89	PURBA MEDINIPUR	EGRA SWARNAMAYEE GIRLS HIGH SCHOOL	School	32	Girls

### 3. List of Sites – Zone 2W

SL NO	DISTRICT	NAME OF SCHOOL	Hostel/ School	NUMBER OF CAMERAS	Type
1	NADIA	GOVT. MODEL SCHOOL, NAKASHIPARA	Hostel	16	Model
2	MURSHIDABAD	AMIRABAD HIGH MADRASHA	Hostel	16	Non-LWE
3	MURSHIDABAD	DHULIYAN BALIKA VIDYALAYA (H.S)	School	64	Girls
4	MURSHIDABAD	AURANGABAD BALIKA VIDYALAYA	School	32	Girls
5	MURSHIDABAD	LALGOLA S. MEMORIAL GIRLS HIGH SCHOOL	School	64	Girls
6	MURSHIDABAD	BHAGWANGOLA BALIKA VIDYALAYA	School	64	Girls
7	NADIA	FULIA BALIKA VIDYALAYA	School	64	Girls
8	MURSHIDABAD	JIAGANJ SURENDRA NARAYAN GIRLS HIGH SCHOOL (H.S)	School	64	Girls
9	PURBA BARDHAMAN	KATWA D.D.C. GIRLS' HIGH SCHOOL	School	32	Girls
10	NADIA	BETHUADAHARI GIRLS' HIGH SCHOOL	School	32	Girls
11	NADIA	BARA ANDULIA BALIKA VIDYANIKETAN	School	32	Girls
12	PURBA BARDHAMAN	BURDWAN MUNICIPAL GIRLS' HIGH SCHOOL	School	64	Girls
13	NADIA	RADHARANI NARI SIKSHAMANDIR	School	32	Girls
14	MURSHIDABAD	MIRZAPUR DR. J.N.SMRTI BALIKA VIDLAYA	School	32	Girls
15	NADIA	CHAKDAHA BASANTA KUMARI BALIKA VIDYAPITH(H.S)	School	32	Girls
16	MURSHIDABAD	DUMKAL BALIKA VIDYAPITH (H.S.)	School	32	Girls
17	MURSHIDABAD	RAGHUNATHGANJ GIRLS' H.S. SCH.	School	32	Girls
18	MURSHIDABAD	DHULIYAN BANICHAND AGARWALA BALIKA VIDYALAYA (H.S)	School	32	Girls
19	MURSHIDABAD	BERHAMPORE M.K. GIRLS HIGH SCHOOL	School	64	Girls
20	MURSHIDABAD	LALBAG MAHARAJA MANINDRA CHANDRA GIRLS HIGH SCHOOL (H.S)	School	32	Girls
21	MURSHIDABAD	AMTALA ANNADAMANI BALIKA VIDYALAYA (H.S.)	School	32	Girls
22	NADIA	SRIDAM CHANDRA BALIKA VIDYALAYA	School	32	Girls
23	MURSHIDABAD	GOKARNA N.G. GIRLS H.S. SCHOOL	School	32	Girls
24	MURSHIDABAD	ORAHAR GIRLS HIGH SCHOOL	School	32	Girls
25	PURBA BARDHAMAN	BARDHAMAN BIDYARTHI BHAVAN GIRL'S HIGH SCHOOL	School	64	Girls
26	NADIA	SARATKUMARI GIRLS' HIGH SCHOOL	School	32	Girls
27	NADIA	DHUBULIA SUBHAS CHANDRA BALIKA VIDYALAYA	School	32	Girls

## WEBEL TECHNOLOGY LIMITED

28	NADIA	KARIMPUR GIRLS' HIGH SCHOOL	School	32	Girls
29	NADIA	DUTTAPULIA UNION ACADEMY FOR GIRLS H.S	School	32	Girls
30	NADIA	RANAGHAT DEBNATH INSTITUTION FOR GIRLS (H.S.)	School	32	Girls
31	MURSHIDABAD	SAGARDIGHI GIRLS' HIGH SCHOOL	School	32	Girls
32	MURSHIDABAD	JALANGI BALIKA VIDYALAYA	School	32	Girls
33	MURSHIDABAD	KANDI R.M.C. GIRLS HIGH SCHOOL	School	32	Girls
34	MURSHIDABAD	SAGARPARA BALIKA VIDYALAYA	School	32	Girls
35	NADIA	DEBAGRAM D.K. GIRLS' HIGH SCHOOL	School	32	Girls
36	NADIA	SHANTIBHUSAN GIRLS' HIGH SCHOOL (H.S)	School	32	Girls
37	MURSHIDABAD	SALAR K.K. GIRLS HIGH SCHOOL	School	64	Girls
38	NADIA	NAZIRPUR SARADA BALIKA VIDYALAYA	School	32	Girls

#### 4. List of Sites – Zone 3C

SL NO	DISTRICT	NAME OF SCHOOL	Hostel/School	NUMBER OF CAMERAS	Type
1	NORTH TWENTY FOUR PARGANAS	SAFIQUE AHMED GIRLS' HIGH SCHOOL (H.S)	School	32	Girls
2	KOLKATA	GARDENREACH MAULANA AZAD MEMORIAL GIRLS HIGH SCHOOL	School	32	Girls
3	NORTH TWENTY FOUR PARGANAS	BASIRHAT HARI MOHON DALAL GIRLS HIGH SCHOOL	School	32	Girls
4	NORTH TWENTY FOUR PARGANAS	BONGAON KUMUDINI UCHHA BALIKA	School	32	Girls
5	NORTH TWENTY FOUR PARGANAS	NEBADHAI BALIKA VIDYALAYA	School	64	Girls
6	KOLKATA	KHANNA HIGH SCHOOL FOR GIRLS (H.S)	School	32	Girls
7	NORTH TWENTY FOUR PARGANAS	MASLANDAPUR BHUDEB SMRITI BALIKA VIDYALAYA (H.S)	School	32	Girls
8	NORTH TWENTY FOUR PARGANAS	MADHYAMGRAM A.P.C BALIKA VIDYALAYA	School	32	Girls
9	NORTH TWENTY FOUR PARGANAS	SHAMNAGAR BALIKA VIDYALAYA	School	64	Girls
10	NORTH TWENTY FOUR PARGANAS	DESHAPRIYA BALIKA VIDYAMANDIR	School	64	Girls
11	NORTH TWENTY FOUR PARGANAS	GARULIA MUNICIPAL GIRLS' HIGH SCHOOL H.S.	School	32	Girls
12	NORTH TWENTY FOUR PARGANAS	KANCHRAPARA INDIAN GIRLS HIGH SCHOOL	School	64	Girls
13	KOLKATA	BARISHA GIRLS HIGH SCHOOL	School	64	Girls
14	NORTH TWENTY FOUR PARGANAS	CHATRA NETAJI BALIKA SIKSHA NIKETAN	School	32	Girls
15	NORTH TWENTY FOUR PARGANAS	HABRA KAMINI KUMAR GIRLS' HIGH SCHOOL(H.S)	School	32	Girls

## WEBEL TECHNOLOGY LIMITED

16	NORTH TWENTY FOUR PARGANAS	SODEPUR SUSHILKRISHNA SIKSHAYATAN FOR GIRLS(H.S)	School	32	Girls
17	NORTH TWENTY FOUR PARGANAS	TAKI S.L. GIRLS' HIGH SCHOOL	School	32	Girls
18	NORTH TWENTY FOUR PARGANAS	MADHYAMGRAM GIRLS HIGH SCHOOL	School	32	Girls
19	NORTH TWENTY FOUR PARGANAS	GOPALNAGAR GIRIBALA BALIKA VIDYALAYA (H.S.)	School	64	Girls
20	NORTH TWENTY FOUR PARGANAS	BARASAT GIRLS HIGH SCHOOL	School	64	Girls
21	NORTH TWENTY FOUR PARGANAS	BELGHORIA MAHAKALI GIRLS' HIGH SCHOOL	School	64	Girls
22	NORTH TWENTY FOUR PARGANAS	LAKETOWN GOVT. SP GIRLS HIGH SCHOOL	School	32	Girls
23	NORTH TWENTY FOUR PARGANAS	BARASAT KALIKRISHNA GIRLS' HIGH SCHOOL	School	64	Girls
24	NORTH TWENTY FOUR PARGANAS	ASHOKENAGAR BANIPITH GIRLS HIGH SCHOOL	School	64	Girls
25	KOLKATA	BINODINI GIRLS' HIGH SCHOOL	School	32	Girls
26	NORTH TWENTY FOUR PARGANAS	NABAPALLI JOGENDRANATH BALIKA VIDYAMANDIR	School	32	Girls
27	KOLKATA	JUDGE ABDUL BARI GIRL'S HIGH SCHOOL	School	32	Girls
28	NORTH TWENTY FOUR PARGANAS	GOPALPUR GIRLS HIGH SCHOOL(H.S)	School	32	Girls
29	NORTH TWENTY FOUR PARGANAS	KHANTURA GIRLS HIGH SCHOOL	School	64	Girls
30	KOLKATA	DUM DUM ROAD GOVT SPOND HIGH SCHOOL FOR GIRLS (H.S)	School	32	Girls

### 5. List of Sites – Zone 4C

SL NO	DISTRICT	NAME OF SCHOOL	Hostel/ School	NUMBER OF CAMERAS	Type
1	SOUTH 24 PGS	NAMKHANA NARAYAN VIDYAMANDIR	Hostel	16	Non-LWE
2	SOUTH 24 PGS	HARINBARI MADHYAMIK BALIKA VIDYALAYA	Hostel	16	Non-LWE
3	SOUTH 24 PGS	SATJELIA NATABAR BIDYAYATAN	Hostel	16	Non-LWE
4	SOUTH 24 PGS	KHARI GUNASINDHU BALIKA BIDYAPITH	Hostel	16	Non-LWE
5	SOUTH 24 PGS	TALDI S BALA S FOR GIRLS UP (H.S.)	School	64	Girls
6	SOUTH 24 PGS	RASHMONI BALIKA VIDYALAYA UP	School	64	Girls
7	SOUTH 24 PGS	KULTI GOVT C R GIRLS HIGH	School	64	Girls
8	HOWRAH	RAGHUDEVBATI SADHARANER VI. GIR	School	64	Girls
9	SOUTH 24 PGS	C DWARIKANATH B BIDYALAY UP	School	64	Girls
10	SOUTH 24 PGS	KAMRABAD GIRLS HIGH SCHOOL	School	32	Girls
11	HOWRAH	BAGNAN GIRLS HIGH SCHOOL	School	64	Girls
12	HOWRAH	AMTA BALIKA VIDYALAYA	School	32	Girls

## WEBEL TECHNOLOGY LIMITED

13	SOUTH 24 PGS	D BARASAT S S S MONI B UP	School	64	Girls
14	SOUTH 24 PGS	BHANGORE BALIKA VIDYALAYA HS	School	32	Girls
15	HOWRAH	MAKARDAH GIRLS HIGH SCHOOL	School	32	Girls
16	HOWRAH	ULUBERIA BINAPANI GIRLS HIGH SCHOOL	School	32	Girls
17	HOOGHLY	RISHRA VIDYAPITH GIRLS HIGH(H)	School	32	Girls
18	SOUTH 24 PGS	MAHESHTALA GIRLS HIGH SCHOOL	School	64	Girls
19	SOUTH 24 PGS	MALLICKPUR GIRLS HIGH SCHOOL	School	32	Girls
20	HOWRAH	GRAMYA HITAKARI GIRLS' SCHOOL (H.S)	School	32	Girls
21	SOUTH 24 PGS	RABINDRA B BIDYAPITH UP	School	32	Girls
22	SOUTH 24 PGS	BAHARU GIRLS HIGH SCHOOL	School	32	Girls
23	SOUTH 24 PGS	NIMPITH A S V MANDIR FOR G UP	School	64	Girls
24	HOWRAH	BANTRA TARASUNDARI BALIKA VIDYABHABAN	School	32	Girls
25	SOUTH 24 PGS	D HARBOUR GIRLS HIGH SCHOOL	School	32	Girls
26	HOOGHLY	ARAMBAGH GIRLS' HIGH SCHOOL	School	32	Girls
27	HOWRAH	BAGNAN ADARSHA BALIKA VID.(H.S)	School	64	Girls
28	SOUTH 24 PGS	BALIA NAFAR CHANDRA BALIKA VIDYALAYA(H.S) UP	School	32	Girls
29	HOOGHLY	SINGUR GOLAP MOHINI MALLICK GIRLS' HIGH SCHOOL	School	32	Girls
30	SOUTH 24 PGS	TATINI BALIKA BIDYAPITH UP	School	32	Girls
31	SOUTH 24 PGS	CHAMPAHATI GIRLS HIGH SCHOOL(H.S.)	School	32	Girls
32	HOWRAH	BRAMHINPARA CHINTAMONI BALIKA VIDYALAYA	School	32	Girls
33	HOWRAH	MOHIARY RANI B.K.C. BALIKA BID	School	32	Girls
34	SOUTH 24 PGS	VIDYANAGAR BALIKA VIDYALAYA (HS)	School	64	Girls
35	SOUTH 24 PGS	CHATTA K PUR S ALI GIRLS HIGH SCHOOL(H.S)	School	32	Girls
36	SOUTH 24 PGS	GHUTIARY SHARIF BALIKA VIDYALAYA (H.S.)	School	32	Girls
37	HOWRAH	BAURIA GIRLS HIGH SCHOOL	School	32	Girls
38	SOUTH 24 PGS	BODRA BALIKA VIDYALAYA	School	32	Girls
39	SOUTH 24 PGS	ACHARYYA PRAFULLA NAGAR ATUL KRISHNA ROY VIDYAYATAN FOR GIRLS' (HIGH) H.S	School	32	Girls

### 6. List of Sites – Zone 5N

SL NO	DISTRICT	NAME OF SCHOOL	Hostel/ School	NUMBER OF CAMERAS	Type
1	MALDA	GOVT. MODEL SCHOOL, MANIKCHAK	Hostel	16	Model
2	UTTAR DINAJPUR	NEW INTEGRATED GOVT. SCHOOL, RAIGANJ	Hostel	16	NIGS



## WEBEL TECHNOLOGY LIMITED

3	DAKSHIN DINAJPUR	NEW INTEGRATED GOVT. SCHOOL, TAPAN	Hostel	16	NIGS
4	DAKSHIN DINAJPUR	PATIRAM VIVEKANANDA GIRLS' HIGH SCHOOL	Hostel	16	Non-LWE
5	DAKSHIN DINAJPUR	DANOGRAM IC HIGH SCHOOL	Hostel	16	Non-LWE
6	DAKSHIN DINAJPUR	NAHIT HIGH SCHOOL	Hostel	16	Non-LWE
7	UTTAR DINAJPUR	ITAHAR GIRLS HIGH SCHOOL	Hostel	16	Non-LWE
8	UTTAR DINAJPUR	RAHATPUR HIGH MADRASAH	Hostel	16	Non-LWE
9	JALPAIGURI	CHENGAMARI T.E. HINDI HIGH SCHOOL (H.S.)	Hostel	16	Non-LWE
10	MALDA	MANIKORA HIGH SCHOOL	Hostel	16	Non-LWE
11	Darjeeling	Dowhill	Hostel	16	Non-LWE
12	MALDA	SHYAM SUKHI BALIKA SHIKSHA NIKETAN	School	64	Girls
13	UTTAR DINAJPUR	CHOPRA GIRLS HIGH SCHOOL	School	32	Girls
14	MALDA	KALIACHAK GIRLS HIGH SCHOOL	School	32	Girls
15	UTTAR DINAJPUR	SHYAMA PRASAD S.BALIKA VIDYALA	School	32	Girls
16	COOCHBEHAR	MATHABHANGA GIRLS H. SCHOOL	School	64	Girls
17	MALDA	CHANCHAL R. D. GIRLS' HIGH SCHOOL (H.S.)	School	16	Girls
18	COOCHBEHAR	PUNDIBARI G.D.L. BALIKA VIDYALAYA	School	64	Girls
19	COOCHBEHAR	HALDIBARI GIRLS' HIGH SCHOOL	School	32	Girls
20	ALIPURDUAR	KAMAKHYAGURI GIRLS' HIGH SCHOOL (XII)	School	32	Girls
21	JALPAIGURI	SUNITIBALA SADAR GIRLS' HIGH SCHOOL	School	32	Girls
22	JALPAIGURI	DHUPGURI GIRLS HIGH SCHOOL(XII)	School	16	Girls
23	DAKSHIN DINAJPUR	BALURGHAT GIRLS' HIGH SCHOOL	School	32	Girls
24	MALDA	BARLOW GIRLS HIGH SCHOOL	School	64	Girls
25	ALIPURDUAR	ST MARIA GORETHI GIRLS' HIGH SCHOOL	School	64	Girls
26	ALIPURDUAR	ALIPURDUAR NEWTOWN GIRLS HIGH	School	32	Girls
27	MALDA	H.C.PUR KIRANBALA BALIKA VIDYASHRAM	School	32	Girls
28	UTTAR DINAJPUR	ITAHAR GIRLS HIGH SCHOOL	School	32	Girls
29	JALPAIGURI	MAYNAGURI GIRLS' HIGH SCHOOL (XI-XII)	School	32	Girls
30	ALIPURDUAR	JATESWAR GIRLS' HIGH SCHOOL (H.S.)	School	16	Girls
31	MALDA	MATHURAPUR T.S.GIRLS' HIGH SCHOOL (H.S.)	School	16	Girls
32	KALIMPONG	KALIMPONG GIRLS H S SCHOOL	School	16	Girls
33	MALDA	MALDA C.C GIRLS HIGH SCHOOL	School	32	Girls

## WEBEL TECHNOLOGY LIMITED

34	MALDA	OLD MALDA AHLADMONI GIRLS HIGH SCHOOL	School	32	Girls
35	JALPAIGURI	SHAKTIGARH BALIKA VIDYALAYA	School	32	Girls
36	JALPAIGURI	BELACOBIA GIRLS HIGH SCHOOL	School	32	Girls
37	Darjeeling	Dowhill	School	32	Girls
38	SILIGURI	DR. RAJENDRA PD G.H.SCHOOL	School	32	Girls
39	SILIGURI	SILIGURI GIRLS HIGH SCHOOL	School	64	Girls
40	SILIGURI	NAND PRASAD GIRLS HIGH SCHOOL(H.S)	School	32	Girls
41	SILIGURI	TARAKNATH SINDURBALA BALIKA VIDYALAYA	School	32	Girls
42	SILIGURI	JYOTSNAMAYEE GIRLS H.S.	School	32	Girls
43	SILIGURI	MATIGARA BALIKA VIDYALAYA	School	64	Girls
44	SILIGURI	NETAJI GIRLS HIGH SCHOOL	School	32	Girls

### 7. List of Sites – Zone 6W

SL NO	DISTRICT	NAME OF SCHOOL	Hostel/ School	NUMBER OF CAMERAS	Type
1	PURULIA	NEW INTEGRATED GOVT. SCHOOL, BANDWAN	Hostel	16	NIGS
2	BANKURA	NEW INTEGRATED GOVT. SCHOOL, SIMLAPAL	Hostel	16	NIGS
3	BANKURA	NEW INTEGRATED GOVT. SCHOOL, RANIBANDH, KANTHALIA	Hostel	16	NIGS
4	BANKURA	NEW INTEGRATED GOVT. SCHOOL, RANIBANDH, SUKNIBASA	Hostel	16	NIGS
5	BANKURA	NEW INTEGRATED GOVT. SCHOOL, RAIPUR DUMURTORE	Hostel	16	NIGS
6	BANKURA	NEW INTEGRATED GOVT. SCHOOL, RAIPUR, DHEKIKATA	Hostel	16	NIGS
7	BANKURA	NEW INTEGRATED GOVT. SCHOOL, SARENGA, BRAHAMANDIHA	Hostel	16	NIGS
8	BANKURA	FULKUSUMA NRITYABALA GIRLS HIGH SCHOOL	Hostel	16	LWE
9	BANKURA	MANDALKULI R.L. GIRLS JR. HIGH SCHOOL	Hostel	16	LWE
10	BANKURA	GARH RAIPUR GIRLS' HIGH SCHOOL	Hostel	16	LWE
11	BANKURA	SARENGA GIRLS' HIGH SCHOOL	Hostel	16	LWE
12	BANKURA	RANIBANDH GIRLS' HIGH SCHOOL	Hostel	16	LWE
13	BANKURA	BETHUALA GOVT. SP. ASHRAM TYPE GIRLS HIGH SCHOOL	Hostel	16	LWE
14	BANKURA	LAKSHMISAGAR BIJOY B. BALIKA VIDYALAYA	Hostel	16	LWE
15	BANKURA	BHUTSAHAR G.JR.H.S.	Hostel	16	LWE
16	BANKURA	SIMLAPAL M.M.B. VIDYAMANDIR	Hostel	16	LWE
17	PURULIA	BORAM HIGH SCHOOL	Hostel	16	LWE
18	PURULIA	BAGHMUNDI HIGH SCHOOL	Hostel	16	LWE

## WEBEL TECHNOLOGY LIMITED

19	PURULIA	DEOLI HIGH SCHOOL	Hostel	16	LWE
20	PURULIA	GHAGRA K.S. HIGH SCHOOL	Hostel	16	LWE
21	PURULIA	BERADA HIGH SCHOOL	Hostel	16	LWE
22	PURULIA	BEGUNKODAR HIGH SCHOOL	Hostel	16	LWE
23	PURULIA	KALMA BANDULAHAR HIGH SCHOOL	Hostel	16	LWE
24	PURULIA	BARGORIA HIGH SCHOOL	Hostel	16	LWE
25	BANKURA	BIBARDA GIRLS' HIGH SCHOOL	Hostel	16	Non-LWE
26	BANKURA	SARALIA PAKURDIHA HIGH SCHOOL	Hostel	16	Non-LWE
27	BANKURA	DEULGORA BHUAKANA PPA HIGH SCHOOL	Hostel	16	Non-LWE
28	BANKURA	PARIMAL DEVI GIRLS' HS	Hostel	16	Non-LWE
29	BANKURA	PANCHMURA GIRLS' M.K.JR. HIGH SCHOOL	Hostel	16	Non-LWE
30	BANKURA	KENJAKURA BALIKA VIDYALAYA	Hostel	16	Non-LWE
31	BANKURA	JOYPUR NIMNA MADHYAMIK BALIKA VIDYALAYA	Hostel	16	Non-LWE
32	BANKURA	SB BALIKA VIDYALAYA	Hostel	16	Non-LWE
33	BANKURA	PANCHAL GIRLS' HIGH	Hostel	16	Non-LWE
34	BANKURA	SUNUKPAHARI GIRLS' HIGH SCHOOL	Hostel	16	Non-LWE
35	BANKURA	SIHAR GIRLS HS	Hostel	16	Non-LWE
36	BANKURA	JHANTIPAHARI PK GIRLS'	Hostel	16	Non-LWE
37	BANKURA	SIBDAS CENTRAL GIRLS'	Hostel	16	Non-LWE
38	BIRBHUM	SATYANARAYAN SIKSHA NIKETAN	Hostel	16	Non-LWE
39	BIRBHUM	GOBINDAPUR KAJI NAJRUL SIKSHA NIKETAN	Hostel	16	Non-LWE
40	PURULIA	BEGUNKODAR HIGH SCHOOL(HS), JL-129, PLOT-2006	Hostel	16	Non-LWE
41	PURULIA	BAGMUNDI HIGH SCHOOL (HS), JL-105,PLOT-1258, 1259	Hostel	16	Non-LWE
42	PURULIA	HURA GIRLS HIGH SCHOOL	Hostel	16	Non-LWE
43	PURULIA	CHATAMBARI HIGH SCHOOL	Hostel	16	Non-LWE
44	PURULIA	JOYPUR GIRLS HIGH SCHOOL	Hostel	16	Non-LWE
45	PURULIA	MANIPUR S.V. HIGH SCHOOL	Hostel	16	Non-LWE
46	PURULIA	J.K.M. GIRLS HIGH SCHOOL	Hostel	16	Non-LWE
47	PURULIA	PARBELIA COLLIARY HINDI HIGH SCHOOL	Hostel	16	Non-LWE
48	PURULIA	DUBRA GIRLS HIGH SCHOOL	Hostel	16	Non-LWE
49	PURULIA	ANARA GIRLS HIGH SCHOOL	Hostel	16	Non-LWE
50	PURULIA	GOLAMARA HIGH SCHOOL	Hostel	16	Non-LWE
51	PURULIA	H.K.S.G.C.M. HIGH SCHOOL	Hostel	16	Non-LWE
52	PURULIA	CHITTARANJAN GIRLS HIGH SCHOOL	Hostel	16	Non-LWE
53	PURULIA	SANTAMOYEE GIRLS HIGH SCHOOL	Hostel	16	Non-LWE
54	PURULIA	RAGHUNATHPUR GIRLS HIGH SCHOOL	Hostel	16	Non-LWE
55	PASCHIM BARDHAMAN	ST. MARY GORETTI GIRLS' HIGH SCHOOL(H.S.)	School	64	Girls

## WEBEL TECHNOLOGY LIMITED

56	BIRBHUM	RAMPURHAT GIRLS HIGH SCHOOL	School	32	Girls
57	PURULIA	BALARAMPUR L.M.G.H.S.	School	32	Girls
58	PURULIA	SANTAMAYEE GIRLS' HIGH SCHOOL	School	32	Girls
59	PURULIA	JHALDA GIRLS HIGH SCHOOL (H.S.)	School	32	Girls
60	BIRBHUM	RAJGAON SEUPUJAN RDASI GIRLS HIGH SCHOOL (H.S)	School	32	Girls
61	BIRBHUM	NALHATI HIGH SCHOOL FOR GIRLS'	School	32	Girls
62	BIRBHUM	BARA LOHAPUR CHARUBALA GIRLS HIGH SCHOOL	School	32	Girls
63	BANKURA	SHIBDAS CENTRAL GIRLS H.S	School	64	Girls
64	PURULIA	BARABAZAR GIRLS' HIGH SCHOOL (H.S.)	School	32	Girls
65	BANKURA	MISSION GIRLS H.S BANKURA	School	64	Girls
66	PASCHIM BARDHAMAN	P.B.G.B BALIKA BIDYAMANDIR	School	32	Girls
67	BANKURA	BANKURA TOWN GIRLS H.S	School	32	Girls
68	BIRBHUM	KIRNAHAR TARAPADA M GIRLS HIGH	School	32	Girls
69	BIRBHUM	BOLPUR GIRLS' HIGH SCHOOL	School	32	Girls
70	BANKURA	BANKURA GIRLS H.S	School	64	Girls
71	PURULIA	MANBAZAR GIRLS' HIGH SCHOOL ( H.S.)	School	32	Girls
72	PASCHIM BARDHAMAN	BURNPUR SRI GURUNANAK HIGH SCHOOL FOR GIRLS'(H.M.),H.S.	School	32	Girls