

WEBEL TECHNOLOGY LIMITED

NOTICE INVITING e-TENDER

Online Tender documents are invited for implementation of Supply, Installation, Testing, Commissioning (SITC) and Maintenance of IP Based VC system to be deployed for Distance Learning Facility in 251 units (1 unit at BRAIPRD, Kalyani, Nadia, 1 unit at Zilla Parishad, North 24 Parganas and 249 units at Panchayat Samiti level) of West Bengal.

. Bids are invited from reputed System Integrators having sufficient experience and credentials for successful completion of “Similar Nature” of work in a Central or State Government Department/PSU/Autonomous Body. WTL has been chosen as the execution authority for the same. Bidder must have adequate Service Engineer for providing on-site support service within the stipulated time as prevalent for VC setups.

1.	Tender No. & Date	WTL/PNRD/VC/23-24/078 dated 16.03.2024
2.	Tender Version	1.0
3.	Brief description of material	Supply, Installation, Testing, Commissioning (SITC) and Maintenance of IP Based VC system to be deployed for Distance Learning Facility in 251 units (1 unit at BRAIPRD, Kalyani, Nadia, 1 unit at Zilla Parishad, North 24 Parganas and 249 units at Panchayat Samiti level) of West Bengal.
4.	Tender Fee	Rs.10000.00 (Rupees Ten thousand only). The amount to be transferred online through e-tender portal.
5.	Earnest Money Deposit	Rs. 3600000.00 (Rupees Thirty Six Lakhs Only). The amount to be transferred online through e-tender portal.
6.	Date of Downloading	16/03/2024
7.	Pre-Bid Meeting date & time	22.03.2024 at 12.00 Hrs. (On-Line Meeting) <ul style="list-style-type: none">• Pre-Bid meeting will be organized on online platform only.• Only queries as per format (Section - L) reaching WTL by 21.03.2024 at 15.00 Hrs. will be taken for decision.• Interested bidders are requested to send mail to purchase@wtl.co.in for participation of online pre-bid meeting. Based on request WTL will share meeting id / links for meeting. If there is any change in date and time then will inform.
9.	Bid Submission Start date & time	01.04.2024 at 14.00.hrs.
10.	Last date & time of EMD & Tender Fee submission intimation.	Before Uploading of Tender
11.	Last date & time of Bid Submission	05.04.2024 at 12.00.hrs.
12.	Date & time of Technical Bid opening	08.04.2024 at 12.00.hrs.
13.	WTL Address	WEBEL TECHNOLOGY LIMITED (A Govt. of West Bengal Undertaking) Plot - 5, Block – BP, Sector – V, Salt Lake City, Kolkata – 700091.
14.	Contact number	033-23673403-06 (WTL Purchase)

WEBEL TECHNOLOGY LIMITED

1. Intending bidder may download the tender documents from the website <https://wbtenders.gov.in> directly with the help of Digital Signature Certificate. Necessary Tender fee may be remitted electronically through e-tender portal in favour of “Webel Technology Limited” and also to be documented through e-filing. Necessary Earnest Money Deposit (EMD) may be remitted electronically through e-tender portal in favour of “Webel Technology Limited” and also to be documented through e-filing.
2. Both Techno Commercial Bid and Financial Bid are to be submitted concurrently duly digitally signed in the website <https://wbtenders.gov.in>
3. Tender documents may be downloaded from website and submission of Techno Commercial Bid and Financial Bid will be done as per Time Schedule stated in Section – C of this Tender Document.
4. The Financial Bid of the prospective Bidder will be considered only if the Techno Commercial Bid of the bidder is found qualified by the Tender Committee. The decision of the ‘Tender Committee’ will be final and absolute in this respect. The list of Qualified Bidders will be displayed in the website.
5. All clarifications / corrigenda will be published only on the <https://wbtenders.gov.in>.

WEBEL TECHNOLOGY LIMITED

CONTENTS OF THE TENDER DOCUMENT

The Tender document comprises of the following:

SECTION – A	BACKGROUD & OBJECTIVE OF THE PROJECT
SECTION – B	OVERALL SCOPE OF WORK AND TIME SCHEDULE
SECTION – C	ZONE-WISE BILL OF MATERIAL
SECTION – D	ELIGIBILITY CRITERIA
SECTION – E	INSTRUCTIONS TO BIDDER
SECTION – F	TECHNO COMMERCIAL EVALUATION & AWARDING OF CONTRACT
SECTION – G	BID FORM
SECTION – H	GUIDANCE FOR E-TENDERING
SECTION – I	FORMAT FOR TECHNICAL CAPABILITY OF BIDDER
SECTION – J	FORMAT FOR FINANCIAL CAPABILITY OF BIDDER
SECTION – K	FORMAT FOR BIDDER'S DETAILS
SECTION – L	FORMAT FOR PRE-BID MEETING QUERY
SECTION – M	PROFORMA FOR PERFORMANCE BANK GUARANTEE
SECTION – N	MAKE, MODEL & PART NUMBER
SECTION – O	TECHNICAL SPECIFICATION WITH COMPLIANCE STATEMENT
SECTION – P	MANUFACTURER AUTHORISATION FORM
SECTION – Q	OEM DECLARATION FORM
SECTION – R	NIT DECLARATION
SECTION – S	DECLARATION OF ELIGIBILITY CRITERIA
SECTION – T	FORMAT FOR LIST OF CLIENTS OF SIMILAR ORDER
SECTION – U	LIST OF LOCATIONS

WEBEL TECHNOLOGY LIMITED

SECTION – A **PROJECT BACKGROUND**

BACKGROUND&OBJECTIVE OF THE PROJECT

Webel Technology Limited, (WTL), as the nodal agency for Government of West Bengal entrusted with the responsibility of implementing eGovernance projects for various departments, have been selected to implement the IP Based VC system to be deployed for Distance Learning Facility in 251 units (1 unit at BRAIPRD, Kalyani, Nadia, I unit at Zilla Parishad, North 24 Parganas and 249 units at Panchayat Samiti level) of West Bengal., as follows:

- Zone 1 – 100 Locations (As per list of Sites – Zone 1)
- Zone 2 – 102 Locations (As per list of Sites – Zone 2)
- Zone 3 – 49 Locations (As per list of Sites – Zone 3)

As per the plan for implementing the project, WTL envisages the total no sites (251 sites), is divided into 5 (Five) zones. The breakup of the overall project into multiple scheduled zones, shall enable faster implementation through multiple partners and better services and support for 3 years, included as part of the supply and maintenance scope of work.. The breakup of each zone of the project, is indicated in the list below.

Sl	Nomenclature	Total Sites	Site with VC Setup	Site with VC and Distance Learning setup
1	Zone 1	100	99	1
2	Zone 2	102	102	0
3	Zone 3	49	49	0
	Total	251	250	1

The SIs participating in the tender shall consider the scope of work for the entire project as per the BOQ, in section C. The bidders must comply with technical specifications and BOQ for price schedule for each of the 3 zones. Bidders shall be required to quote (submit for all the 3 zones to technically qualify for the project.)

The award of the contract shall be based on each Zone. Qualified Bidders whose price bid shall be deemed to be L1 for any zone, shall be eligible for award of the contract for supply and installation as per BoQ, for the zone except that no bidder shall be awarded more than 2 zones. Detailed criteria is as per Section F , Techno Commercial Evaluation.

WEBEL TECHNOLOGY LIMITED

SECTION – B

OVERALL SCOPE OF WORK & TIME SCHEDULE

Overall Project Scope

The objective of the project shall be to setup Video Conferencing based training setup in

- **249 selected Panchayat Samity offices across 23 Districts of West Bengal,**
- **Setting up one state level master training center at BRAIPRD, Kalyani, Nadia and**
- **One in Zilla Parishad (N 24 Parganas).**

The purpose of the project shall be to setup a “Smart Training setup” to extend the training facilities to the elected representatives and employees of Gram Panchayats in all the district through an IP based online video conferencing system, to be setup and managed by WTL. The following are the key functions of the Video Conferencing setup at each Panchayat Samity office at block level:

- 1) Conduct training with online curriculum for all employees and elected representatives through trainer led courses conducted locally.
- 2) Conduct multi-location training from any Panchayat Samity Smart training facility, through IP based Video conferencing facility, so that trainees can attend courses/trainings being conducted from any other location.
- 3) Conduct state level training imparted from the central facility, for all trainees to attend the training online through Video Conferencing facility being setup. All the centers to be setup can simultaneously attend the training at central level, saving huge time and cost for the department.
- 4) Conduct refresher courses and online trainings on demand using the Smart Training facilities in future.

The following are the key components of the Smart VC setup for training:

- Desktop Computer(AIO) – Core i7 System for IP based VC
- Video Conferencing System: Camera & Expansion Mic.
 - a. Camera System
 - b. Smart Integrated Speakerphone
 - c. Integrated Microphone
 - d. Expansion Microphones
 - e. Cable and Ambience Management System
 - f. Remote Control for VC Management
- 65” Smart Interactive Panel for Trainer (Viewer 1)
- 2 x 55” Display Unit for Video Conferencing (Viewer 2 & Viewer 3)
- Integration of all components and network

The above components shall be integrated and installed in each site to prepare for an IP based VC system to enable Distance Learning for imparting training onsite and through remote training programs for GP employees and elected representatives.

Note:

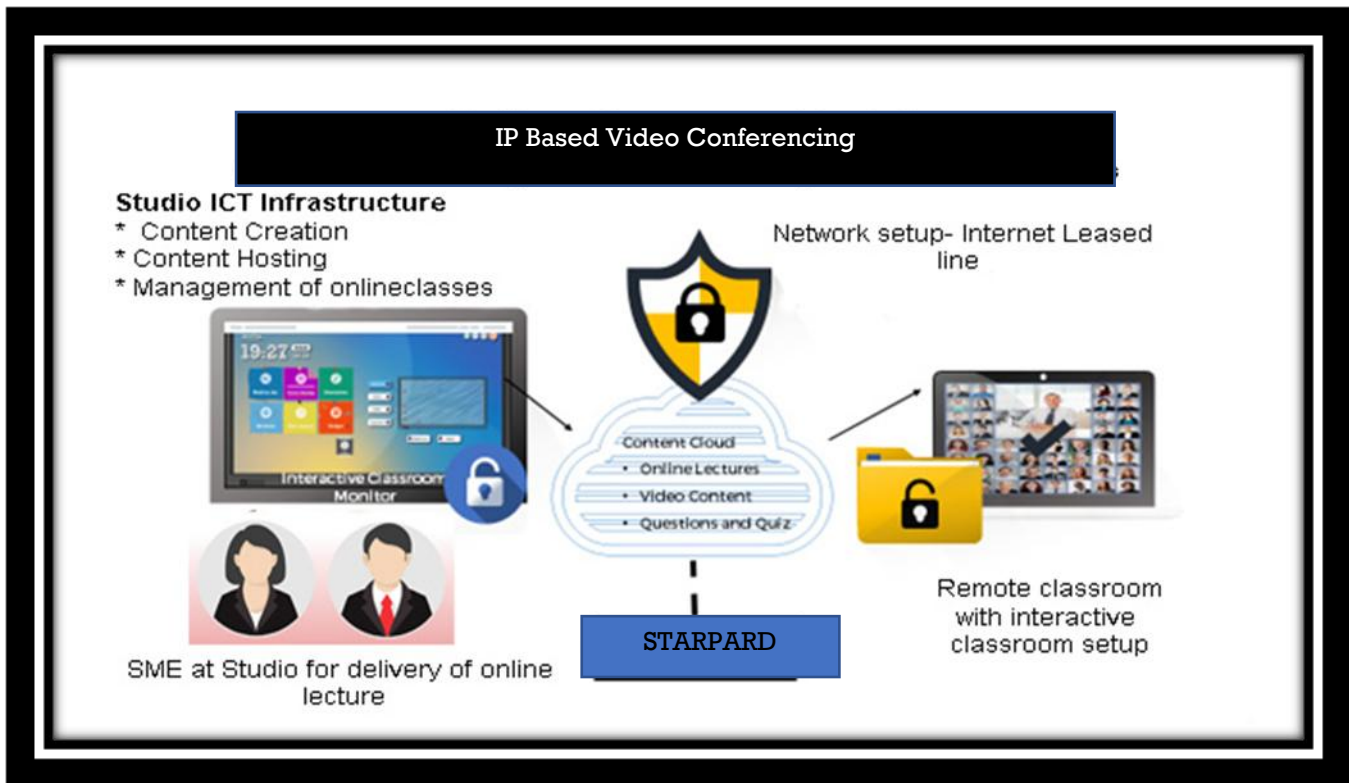
- 1) Internet Connectivity is assumed to be present at the sites (Panchayat Samity/BDO office) and shall be considered as out of scope of this project. Minimum Internet Bandwidth (1:1) of 100 Mbps is recommended at each site for smooth operation of Online session for Distance learning at each site. The Internet Services must have 1:1 to ensure Video upload and Video Download streams

WEBEL TECHNOLOGY LIMITED

during the VC sessions operate smoothly. The cost of Internet Connectivity is not included in the scope of this proposal and all arrangements shall be done by the Department of P&RD (STARPARD) through the concerned offices of BDO/Panchayat Samity.

- 2) Site Provisioning, including room setup, furniture and fixtures, etc. shall not be in the scope of this proposal. Provisioning of site (Conference room) with all furniture, fixtures, electrical connections, light, air conditioning system, Internet connectivity at site including network provisioning, shall be undertaken by STARPARD in coordination with the local BDO/Panchayat Samity offices.

The purpose of the project shall be to setup Video Conferencing setup for online training in each Panchayat Samity/BDO Office in 250 locations across West Bengal. The training to the GP Employees and elected representatives shall be delivered through the Smart Training Setup with IP based Video conferencing facility. The following diagram provides a schematic view of the project objectives.



The scope of work for project implementation is detailed in this section. The project implementation shall include:

- 1) Supply and installation of the IP based VC and online training setup at 251 locations across West Bengal including periodical training to the concerned stake holders.
- 2) Technical Operation - Managed online classroom to all BDO offices in 1: N setup
- 3) Project Operation - Management of Infrastructure and continuous technical support for smooth project operation.

The project implementation is the most critical aspect of this project's success metrics. The training setup to be delivered by the project has been outlined in the scope of work. However, the technical implementation and support of the project is critical for the sustenance and proper use of the infrastructure being created. While the proposed technology can support many possibilities, the Network bandwidth availability, Network stability and reliability, as well as technical expertise available at the Studio and remote locations need to be provisioned for proper utilization and maintenance of the infrastructure.

WEBEL TECHNOLOGY LIMITED

Supply of Equipment & services

The selected System Integrators (SI) for the project shall be responsible for supply, installation, and setting up of the IP based VC infrastructure for enabling "Distance Learning" for the project. It is envisaged the implement the project in multiple Zones, to ensure that the SI can implement the project within the time and budget set for the project. An example of the IP based VC setup is as shown below in the picture as an example.

Note: The 2 display units shall be on the sidewalls for better viewing in large setups.



The following are the key components of the Smart VC setup for training:

Desktop Computer (AIO) – Core i7 System for IP based VC

Video Conferencing System: Camera & Expansion Mic.

- g.** Camera System
- h.** Smart Integrated Speakerphone
- i.** Integrated Microphone
- j.** Expansion Microphones
- k.** Cable and Ambience Management System
- l.** Remote Control for VC Management

65" Smart Interactive Panel for Trainer with additional display unit (Viewer- 1)

2 x 55" Remote center Classroom Presentation Monitor:(Viewer-2 & Viewer-3),

Integration of all components and networking

The scope of the supply and installation is briefly described below and the detailed specifications for each component is provided in the Annexure.

1.1.1 Desktop Computer

Since the training facility shall be based on IP based Video Conferencing system, the controlling unit shall be provided as a Desktop Computer. The high-end desktop shall be connected to the Internet and shall be used to run all the video conferencing software required to connect remotely to the training sessions. The indicative

WEBEL TECHNOLOGY LIMITED

specifications for the Desktop computer to be supplied is as follows:

1. Desktop (All in One Computer)
 - m.** Processor - Core i7 12th Gen (Latest Generation)
 - n.** 16 GB DDR4-3200 SDRAM (8GB+8 GB DIMM)
 - o.** 1 TB PCIe® NVMe™ M.2 SSD
 - p.** DVD Player RW
 - q.** Network Connectivity - Wi-Fi +BT /1000 LAN
 - r.** Operating System WIN-11 pro
 - s.** 23" or Higher Display Monitor (LED)
 - t.** 3 YRS Onsite Warranty
 - u.** Other Software - Office 365 subscription for 3 years.

The Desktop computer shall be core of the IP based VC and Smart training setup and shall be essential for management of all video conferencing session and shall be used for management of online training session using the smart interactive panel. The computer shall also be available for recording of training sessions, so that training in offline mode can be conducted at each site.

1.1.2 Integrated IP based Video Conferencing System

The IP based Video Conferencing system shall be an integrated system which shall comprise of all components of the VC system in a single plug and play unit for easy installation, management and maintenance. The key components of the integrated VC system shall consist of Camera, Integrated Speakerphone, Integrated Microphone and Expansion Microphones, apart from all cables and connectors required for an integrated VC setup:

- 1) Camera for Video Conferencing
 - onboard H.264 with Scalable Video Coding (SVC) , UVC 1.5 for processing of video within the camera and usb Audio class (UAC) to save computing resources on end device/ laptop/PC or codec.
 - Output: H.264, YUY2, MJPEG.
 - Optical Resolution: 2 MP (1080p/30fps or above).
 - Sensor size: 1/3" CMOS
 - SNR >= 35dB
 - Port: USB 2.0 for end device connectivity.
 - FOV: Diagonal 90°, Horizontal 81.9°and vertical 59°or above.
 - Aperture: F2.0 ~ 3.0
 - Should support autofocus.
 - Smooth Motorized pan, tilt and zoom from remote control and as well as manually from the speakerphone / control unit placed on the table.
 - It should also be possible for user to control camera via simple software application in PC & Mac.
 - Lens of the camera should have ZEISS certification
 - Should support Far End camera control (FECC)
 - Zoom: 10x lossless or better
 - Camera Control: Standard VISCA / Mini din 6 pin or equivalent.
 - Motorized 260- Degree Pan, 130-degree tilt
 - +/-90° Pan range, +35°/-45° tilt range
 - Minimum illumination: 10 lux
 - Preset: 5 or above

WEBEL TECHNOLOGY LIMITED

- Should have Kensington Security Slot to ensure physical security of camera in conference room.

2) Integrated Speakerphone

To be supplied with required power adaptor, regional plugs, cables minimum 5mts and mounting bracket.

- LED for speakerphone streaming, mute, hold and Bluetooth pairing so that user is aware about the status of the device.
- LCD to show caller ID, call duration and other functional responses.
- Should have Kensington Security Slot to ensure physical security of device in conference room.
- Audio Technology: Must support Echo cancellation, Noise reduction, ultra-wideband audio.
- Must have full duplex performance for real time communication.
- Frequency response: 120Hz – 14KHz
- Sensitivity: 83dB SPL +/-3dB at 1W/1M
- Max output: 91dB SPL

3) Integrated Microphones

- Distortion: <5 % from 200Hz
- Four (4) inbuilt omni-directional microphones supporting 20-foot or more diameter range
- Frequency response: 100Hz – 11KHz
- Sensitivity: -28dB +/-3dB
- System should be supplied with atleast 2 expansion microphones to increase coverage for large conference rooms.
- Integrated microphone and supported expansion microphone should have mute/unmute button so that user sitting at any corner of conference room have provision to mute/ unmute the complete system with LED indication on each of microphone.

4) Expansion Microphones (minimum 2)

- Distortion: <1 % @ 1KHz at 106dB
- Type: Omni-directional
- Should support noise canceling individually.
- Frequency response: 100hz - 20 kHz
- Sensitivity: -24dB

5) Cable Management

- LED color indicator: Blue -active call; Red - microphone Mute.
- System should support central mountable cable manager for connection of all components in system so that single USB cable (for camera , speakerphone and microphone) with 3mts of minimum length is connected to end device (laptop, Mac, Codec, desktop and thin client)
- All necessary cables for all the components, power adaptors, regional plugs, quick start guide along with the mounting bracket should be supplied by the OEM.

6) Remote Control Device

- Type: Infrared with removable / replaceable batteries.
- System should be supplied with all-in-one remote control to manage Camera (Pan, Tilt, Zoom, Preset) ,
- Speakerphone (volume +/-) and Microphone (mute /unmute)
- System should have the stand / dockable space for the remote control.

WEBEL TECHNOLOGY LIMITED

- Range 8.5 mts or more

The Video Conferencing setup shall also consist of additional display devices for the purpose of maximum coverage in the conference room and shall make it easy and convenient for all training attendees to view the video-based distance learning session and content easily.

The IP based integrated Video Conferencing system shall consist of the supply, installation, testing and commissioning of all the above items as per the scope of work.

1.1.3 Interactive Flat Panel (65") for Online Classroom

The interactive flat panel shall be provisioned in every classroom/conference room to enable the training sessions to be conducted either locally or through distance learning mode. The key features of the Interactive Flat panel shall be to integrate with the IP based Video conferencing system and allow collaborative training sessions across multiple locations. The training imparted from any central location or from another center, shall be broadcast and into every connected training room, as per plan. The attendees of each training session shall seamless become part of a single session through the integrated system and IP based video conference.

The key features of the Integrated flat panel are as briefly described below. Detailed specifications shall be part of Annexure I.

1) Interactive Board with Accessories

- HDMI Video Extender over Ethernet (Receiver & Transmitter) Pair
- 65" Interactive Digital Display (Viewer-2)
- Multi-Touch & writing easy Connect & Screen Sharing,
- Heavy Duty movable floor Stand,
- HDMI cable 5 mtr High speed HDMI Cable with Ethernet, 1 Nos
- HDMI cable 20 mtr Premium High Speed - 3 Nos.
- 1 in 4 Out 4K/3G/HD/SD HDMI Distribution Amplifier. -1 No
- HDMI Video Extender over Ethernet (Receiver & Transmitter) Pair – 1 No
- Warranty: 3 Years

In addition to the 65" Interactive Digital display unit, 2 Nos. additional 55" remote center classroom presentation monitor shall be provided. The minimum specifications for the 55" Presentation monitor shall be the same as the specifications, as mentioned below.

2) Display Unit (55" Display)

- Display Size (Diagonal) - 55" (inch)
- Resolution - 3840x2160
- Backlight Unit Type - Direct
- Brightness - 400 nits
- Dynamic Contrast Ratio (Dynamic) - 10,00,000:1
- MCI(Hz)) Static(Panel) Contrast Ratio - 1,200:1
- Refresh Rate - 60Hz
- HDR(10PRO/HLG) - Yes
- Speaker (Sound Output) - 10W + 10 W
- Digital (Terrestrial, Cable, Satellite) - DBV-T2/C
- Input Interface -- HDMI IN 3(2.0)), Headphone Out (Phone Jack type), RS232(D-SUB9 pin/Phone Jack)/(Phone Jack 4 Pin)
- Jack Interface -- USB 2.0, Digital Audio Out (Optical), External Speaker Out (3.5mm Phone Jack), RJ45(Usage Purpose) (LAN)
- Power Supply(Voltage/Hz) - AC 120V-50/60 Hz

WEBEL TECHNOLOGY LIMITED

- Typical Power Consumption -- 145 W
- Smart Features -Web Browser, Pre-Loaded App, Soft AP, Wi-Fi (802.11ac), Bluetooth, HDMI-ARC
- Screen Share -- Miracast, Smart Share
- Signage Features -- Vertical set up, Fail Over, NTP Server Setting, CISCO Certified Connectivity, Crestron connected (Network Based control), play via URL, RTC (Real Time Clock), Time Scheduler, NTP Sync Timer, BEACON, Embedded CM (Content Manager)

1.1.4 Other Necessary Items

The following are some of the key items proposed to ensure that the Video Conferencing sessions can be smoothly conducted for distance learning purposes.

- 1) Soundbox: (Make – Philips or Equivalent)
 - 2.1 channel 80W Multimedia Speaker System
 - Convertible Soundbar & Multi Connectivity Option.
- 2) LED Camera Light (Make: BKN or equivalent)
 - 11 Inch LED Camera Light Panel
 - EU Plug Cable with Mini Metal Tripod
 - 2700k-5700k Fill Lamp Live Stream etc. (
 - Light with Tripod, Remote & Rotation Ball Head)

The above accessories and all other cables, connectors, and networking within the conference room to be provisioned by the Panchayat Samity/BDO office shall be provisioned for proper installation of the system.

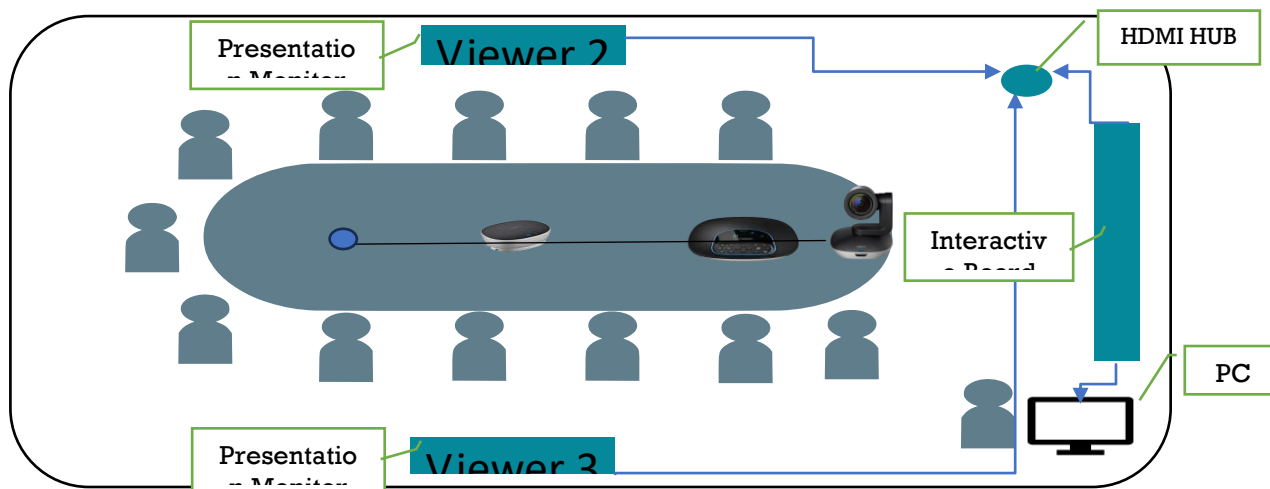
1.1.5 Services

The supply, installation, testing and commissioning services shall be provided by the System integrator for each site allocated. The System Integrator shall be responsible for:

- 1) Site Survey and planning for each site – A site layout diagram shall be prepared with all details of sitting arrangements, positioning of each unit of hardware to be installed at site, electrical and networking diagram, approved by the respective site in charge and submitted to WTL for start of work.
- 2) Site Preparation – Making all the necessary arrangements, such as electrical wiring, sockets, earthing and other necessary arrangements required for successful installation of all components to be supplied. Necessary arrangements such as computer tables, , cabinet for storing of accessories, etc., if required, shall be provided under the site preparation activity.
- 3) Supply -- Supply of all hardware and accessories to each site and necessary arrangements for safekeeping of the supplied materials.
- 4) Installation -- Installation of all components as per the approved diagram by site in charge and WTL, and necessary installation certificate must be obtained from the site in charge and submitted to WTL for verification.
- 5) Testing and Commissioning – Testing of the installed components shall be carried out jointly by the site in charge and WTL, to ensure all requirements are met, and final commissioning certificate shall be approved through STARPARD, after thorough testing of the setup. Training of minimum one resource provided by STARPARD, at each site shall be part of the final commissioning.

WEBEL TECHNOLOGY LIMITED

This project shall require a careful planning of the implementation phase of the project to ensure successful commissioning and operations. The cost of SITC is separately indicated in the commercial budget to ensure that all sites spread across the state are adequately covered and all necessary services are properly provided by WTL and the System Integrators. The following is a schematic of the site layout for the VC setup.



The project shall include in the scope of work, support for technical operations of the project. All system integration partners shall be responsible for ensuring smooth operation of each of the IP based VC and smart Interactive panel for distance learning for a period of 3 years. The technical operation is critical for the success of this project in the post implementation phase. The technical operation of the project shall have the following aspects:

- Online classrooms conducted by trainers at any central location shall be received by the training setup in BDO/Panchayat Samity offices in “Broadcast Mode”. All locations shall log into the classroom session and receive the audio and video of the classroom lecture.
- Remote participants in the live classroom sessions shall be able to attend training session in Distance Learning method as follows:
 - a. Students in remote classrooms will mostly be passive participants, listening to the class broadcast session.
 - b. The central studio moderated by the lecturer/teacher shall conduct sessions as per schedule to be finalized. The trainees shall be participating in the session from the local setup through Video conferencing.
 - c. Remote classrooms shall have a facility to raise hand in order to initiate any interaction with the trainer. The studio will enable the video of the remote classroom, so that all other participating schools can receive the video and audio of the interaction between the trainer and the remote location enabled for the time being. Each location will however be monitored to ensure that the location is seamlessly connected and are able to attend the training session without disruption.
 - d. A technical operation monitoring setup shall be necessary to monitor the live training sessions across multiple location.

The WTL Project Management Team (PMT) shall ensure that all the service providers for the IP based Video conferencing system at Panchayat Samity offices shall be supported for smooth operations as follows:

- The interactive online classroom operations shall be managed centrally and will be supported by trained coordinators in each district in order to ensure that technical challenges do not arise during live sessions.
- The Service providers shall provide district level technical support for maintenance of the equipment supplied and installed at each location. A centrally located call center by the service

WEBEL TECHNOLOGY LIMITED

providers shall ensure deputing of the engineers on time to manage, repair or rectify any defect within the SLAs to be agreed with the department.

The sophisticated equipment to be installed at the remote classrooms in Panchayat Samity shall require expert management and support throughout the project operations. The following are some of the support services proposed to be included for smooth operation of the project.

- 1) **Remote Center Support** – The support to remote centers in Panchayat Samitis shall be the most critical aspect of the project support. The remote locations will need maximum support and the operational support shall have the following components:
 - a. **Training of local administrators** – An initial training of the local administrator in operation of the interactive classroom shall be conducted during implementation. A training session with live operation training shall be provided. The training of BDO office staff shall consist of:
 - Technical handling of interactive classroom equipment
 - Moderating the live session and raising questions of students
 - Coordinating with session manager at central location on chat/phone
 - Offline access to recorded sessions.
- 2) **Technical Support and maintenance**– A technical support center will be setup with expert engineers to support technical issues faced by the remote locations during live sessions. The technical support team shall provide online support through remote access and also through site visits in case of equipment failure, for maintenance. The technical support is included in the technical scope of the project and shall be implemented.

The project operations as outlined above are important part of the project and shall be provisioned for a period of minimum 3 years.

1.1.6 Warranty and Comprehensive Onsite Support

Comprehensive onsite Warranty Support meeting the SLAs defined in this document is required and bidders must comply with all the support requirements, for the following:

- 3 year Comprehensive Warranty Support, including onsite maintenance as per SLA defined.
 - Bidder must provide documentary proof of district level support infrastructure and manpower (support engineers) for proper maintenance of the surveillance infrastructure installed at each site. A service support plan for meeting the SLAs for Warranty and Comprehensive onsite support shall be mandatory.
 - (Bidders will be evaluated based on the existing support infrastructure available in districts of West Bengal as per the evaluation criteria. Any bidder without the necessary service infrastructure and manpower, must submit a detailed plan with an undertaking for setting up necessary service support infrastructure in each district covered under the scope of this project.)
- District Support Center with Support personnel, in each zone
 - 2 dedicated support engineer in each zone
 - Adequate spares inventory in each zone for all hardware to be supplied.

Project Implementation Process

The project implementation process to be followed shall include the selected Project Implementation Partner (SI) process for the timely installation of the CCTV Cameras, Storage and other equipment, including passive and active components at site. The SI partner shall also setup the support call center, and the district support centers at the

WEBEL TECHNOLOGY LIMITED

identified locations for delivery of support services as part of the process. The following are the steps of the process to be followed:

- 1) Submission of detailed project plan for each site implementation by SI and approval of the plan by WTL PMU.
- 2) Conducting of Site Survey as per plan
 - a. Submit site survey report with detailed layout diagram for each camera and other equipment at site.
 - b. Submit list of equipment to be delivered and installed at each site.
- 3) Supply and installation at site. (Schools/Hostels)
 - a. Supply the listed items as per BOQ for each site approved.
 - b. Install the equipment (Active/Passive) and other site work as per plan. Label each item with "Unique Identification Code" for tracking.
 - c. Install the Storage and Video management Software and demonstrate the functioning of the site, for each camera and the storage. Update VMS with the camera identification number for easy tracking.
 - d. Submit list of equipment (Active/Passive) installed at each site with "Unique identification" number for tracking of each item.
 - e. Update the installation database for future reference and support requirement.
- 4) Setup Call Center at central location (Kolkata) for reporting of issues/problems from site.
 - a. Provision trained manpower for call center support
 - b. Provision for infrastructure and Support management software for call tracking, issue tracking, assignment of calls to field, status updation of repair/replacement.
 - c. Reporting of support status on weekly basis as per SLA.
- 5) District Support Infrastructure at each district of West Bengal covered in the scope of each zone. The bidder must:
 - a. Setup service center in the district covered under each zone, if not existing, within the timeline specified.
 - b. Deploy technical support personnel (2 dedicated engineers per zone) and adequate spares in each district/Zone as per scope.

The SI implementation partner shall be required to perform the implementation work as per the agreed implementation plan approved by the PMU. The details of the services to be provided and the SLAs shall be finalized before execution.

Support Services Required

The support services proposed to be setup by SI is the key for the successful implementation of the project and management of operations over a period of 3 years or more. The current scope of the project includes with three (3) years comprehensive warranty support and CAMC for additional two years (optional).

1.1.7 Call center support operations

A centralized call center with a toll free number shall be setup in Kolkata by the SI Partner, to support the maintenance of the sites located all across West Bengal. The support services management will be managed through the Support Call center and will have required infrastructure and software necessary for service management. The Center will manage the inventory records of all items and spares used in the project and track the status of each item through the support system software.

WEBEL TECHNOLOGY LIMITED

The Support call center shall be available to receive calls on email/telephone. The call center will have one Manager and call center staff on rotation basis for high availability operation. Call center staff to attend the call and perform the following:

- ✓ Identify site (School/Hostel) and register complaint on system
- ✓ Identify faulty asset from asset code reported and update system
- ✓ Assign call to respective field engineer for replacement, if camera is faulty.
- ✓ If other Active component is faulty, assign stock from central location for dispatch to field location.
- ✓ Update and monitor delivery of replacement stock to field engineer.
- ✓ Monitor dispatch of faulty item from field to repair center.
- ✓ Update repair status and replenish stock status on completion of repair.
- ✓ Close call and update SLA compliance data

1.1.8 Repair Center

Repair center will be available from OEMs in Kolkata for rectification of faults and will ensure. Repair center must complete proper repair and send back the item within 7 days to ensure healthy stock status, as part of SLA. In case of any delay, the OEM must arrange for replacement of the faulty item.

1.1.1 Service & Support Infrastructure Setup in West Bengal

The successful bidder (contractor) shall have the required services and support setup, with qualified manpower (minimum 2 engineers per zone) and adequate spares to ensure delivery of the support services as per the SLA required, across West Bengal. Details of existing setup, manpower and location, must be provided with documentary proof, for the purpose of technical evaluation of bid. In case the bidders do not have the district level support setup in any zone, the same must be setup within 30 days of award of contract for each zone.

WEBEL TECHNOLOGY LIMITED

Tender Schedule

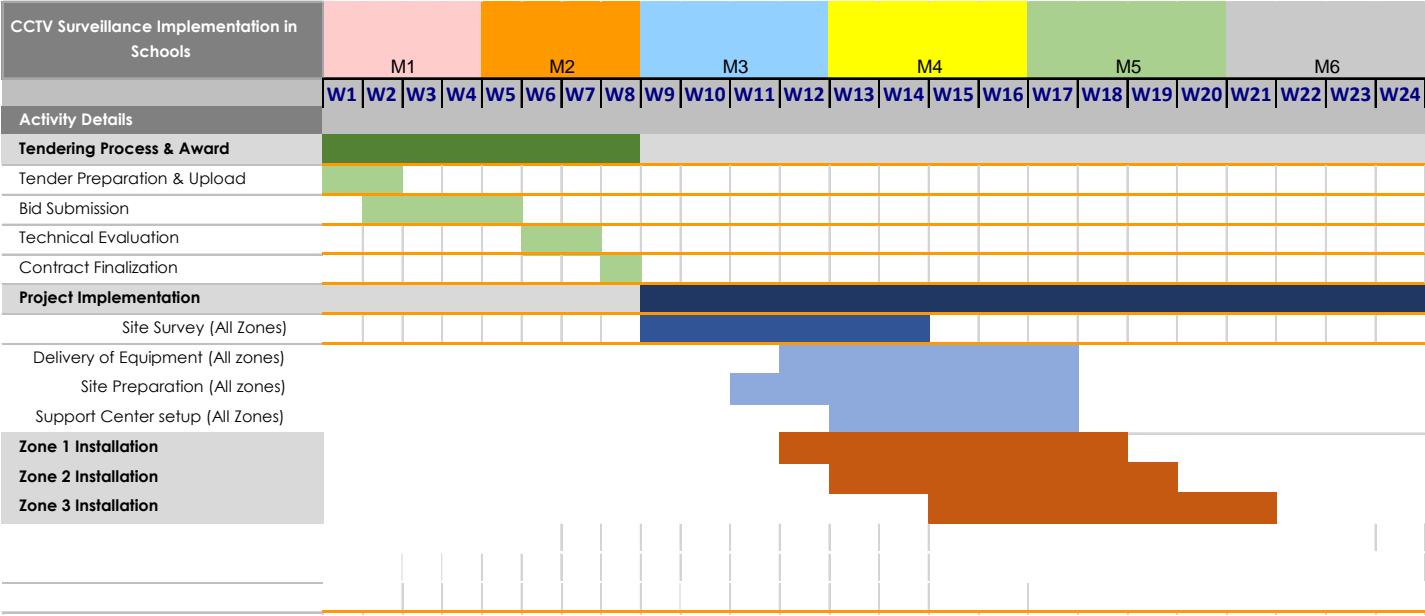
Sl. No.	Particulars	Date & Time
1	Date of uploading of N.I.T. & other Documents (online) (Publishing Date)	16.03.2024
2	Documents download/sale start date (Online)	16.03.2024
3	Last Date and time of sending the queries (Offline)	21.03.2024 at 15.00 hrs.
4	Pre Bid Meeting at WTL Office (Off Line)	22.03.2024 at 12.00 hrs.
5	Corrigendum, if any will be published (On Line)	-
6	Bid Submission start date & time (On line)	1.04.2024 at 14.00 hrs.
7	Last Date & time of submission of Earnest Money Deposit & submission of remittance details	Before Uploading of Tender
8	Last Date & time of submission of Tender Fee & submission of remittance details	Before Uploading of Tender
9	Bid Submission closing date & time (On line)	5.04.2024 at 12.00 hrs.
10	Bid opening date & time for Technical Proposals (Online)	8.04.2024 at 12.00 hrs.
11	Date of uploading the final list of Technically Qualified Bidder (online) after disposal of appeals, if any	-
12	Date for opening of Financial Bid (Online)	-

Project Timeline

The project is divided into 3 zones for the purpose of faster implementation and better monitoring and management. It is mandated that any successful bidder may be allowed to implement maximum 2 Zones out of the 3 zones specified, for the purpose of the faster and better implementation management. The following is the timeline expected for the implementation process:

- The project is estimated to be completed within 3 months from the date of tendering.
- The implementation of project for each zone shall be conducted simultaneously with other zones
- The site survey and the project management activities must commence with the award of the contract for each zone.
- The supply and delivery of equipment must be completed within 6 weeks from date of award of contract
- The installation process for each zone is expected to be completed within 8-10 weeks (2 months) for each zone.
- The project plan shown below is indicative and shall change based on the award of each zone to various bidders.

WEBEL TECHNOLOGY LIMITED



Note: The above plan is tentative and indicates that the project must be completed within 6 months from the date of tendering.

WEBEL TECHNOLOGY LIMITED

SECTION – C

Zone-Wise Bill of Material

Estimated BOQ - Overall

The following table provides the BOQ of estimated quantity of equipment required for the entire project scope. The bidders shall be required to quote for the items provided in the BOQ for each of the 3 zones with required authorization from respective OEMs for the Active and Passive components specified in the BOQs. The bidders shall be required to additionally quote for the SITC services, included in each BoQ.

SL_No	Items Description	Unit	Qty. (per site)	No of Sites	Total Qty
A	Video Conferencing System Components				
1	Desktop i7 12th Gen /16 GB (8+8) /1 TB SSD/Wi-Fi +BT /1000 LAN /WIN-11 pro /23"/3YRS /Office 365, Warranty: 3 Years	No.	1	251	251.00
2	Video Conferencing System / Devices with Expansion Mic. High quality HD 1080p. H 264 (SVC and uvc1.5) 10 X Zoom auto focus Zeiss lens for end camera control. 5 Camera presets, full duplex speaker phones optional expansion microphone beam forming with 4 omni directional Mic. HD audio cloud, integration, communication SaaS PTZ apps, multiple camera mounting option, dockable remote control, Video Crystal clear audio with acoustic each cancellation, noise reduction and intuitive controls with USB plug and play connectivity. Warranty: 3 years	No.	1	251	251.00
3	Soundbox: 2.1 channel 80W Multimedia Speaker System with Convertible Soundbar & Multi Connectivity Option.	No.	1	251	251.00
4	LED Camera Light: 11 Inch LED Camera Light Panel EU Plug Cable with Mini Metal Tripod 2700k-5700k Fill Lamp Live Stream etc. (Light with Tripod, Remote & Rotation Ball Head)	No.	4	251	1,004.00
B	Interactive Board with Accessories:	No.			
1	Interactive Board with Accessories (Viewer 1): 65" Interactive Digital Display, multi-Touch & white board for writing, easy Connect & screen Sharing, detailed specification in annexure. • Heavy Duty movable floor Stand: 1 Nos • HDMI cable 5 mtr High speed HDMI Cable with Ethernet, 1 Nos • HDMI cable 20 mtr Premium High Speed, - 3 Nos. • 1 in 4 Out 4K/3G/HD/SD HDMI Distribution Amplifier. -1 No • HDMI Video Extender over Ethernet (Receiver & Transmitter) Pair – 1 No Warranty: 3 Years	No.	1	251	251.00

WEBEL TECHNOLOGY LIMITED

2	(Viewer 1 & Viewer 2): 55 Inches: 138 cm (55 inches) Crystal 4k Series Ultra HD Smart LED TV, Crystal 4k UHD (3840x2160) resolution Refresh Rate, 60Hz, Connectivity 3 HDMI Ports to connect set top box, Blu ray speakers or a gaming console. 1 USB Port connect to hard drives or other USB devices Sound 20 Watts Output, Powerful Speakers with Dolby Digital Plus. Warranty: 3 Years	No.	2	251	502.00
C	Implementation Services & Support				
1	SITC: One Time Charges (Electrical, Networking and other necessary accessories for making site operational) including Connectors, Cable, Converter Tools etc		1	251	251.00

Note:

- The service components covered under the scope shall be quoted as unit rates.
 - Site preparation, Network laying charges shall be as per actual length of cable installed, in meters and networking equipment required at each site.
 - SITC charges shall be based on the total number of VC, Audio, Display and associated systems to be installed in each site and a site-wise rate must be provided for the total number of sites in the BoQ.
- The equipment rates to be quoted shall be inclusive of 3 years comprehensive onsite warranty and support infrastructure cost, to be provided under the scope of work of the project and as per the SLAs specified.

Zone 1 – BoM

The Zone 1 scope of work shall comprise of implementation of VC Systems in Block/Samiti offices as per the details provided in the Scope of Work. The total number of sites in Zone 1 comprising of 100 sites in the block offices/Panchayat Samiti in districts covered are as per the detailed list of sites in Zone 1 are provided in Section – U. The following are the districts covered:

- COOCH BEHAR
- DARJEELING FOR SILIGURI MAHAKUMA PARISHAD AREA
- DARJEELING Hill Area
- PURULIA
- JHARGRAM
- SOUTH 24 PARGANAS
- MALDA
- BANKURA
- PURBA MEDINIPUR
- State level Unit – Kalyani, Nadia

The BoQ for Zone 1 are as shown in the table below:

SL_No	Items Description	Unit	Qty. (per site)	No of Sites	Total Qty
A	Video Conferencing System Components				
1	Desktop i7 12th Gen /16 GB (8+8) /1 TB SSD/Wi-Fi +BT /1000 LAN /WIN-11 pro /23"/3YRS /Office 365, Warranty: 3 Years	No.	1	100	100.00

WEBEL TECHNOLOGY LIMITED

2	Video Conferencing System / Devices with Expansion Mic. High quality HD 1080p. H 264 (SVC and uvc1.5) 10 X Zoom auto focus Zeiss lens for end camera control. 5 Camera presets, full duplex speaker phones optional expansion microphone beam forming with 4 omni directional Mic. HD audio cloud, integration, communication SaaS PTZ apps, multiple camera mounting option, dockable remote control, Video Crystal clear audio with acoustic each cancellation, noise reduction and intuitive controls with USB plug and play connectivity. Warranty: 3 years	No.	1	100	100.00
3	Soundbox: 2.1 channel 80W Multimedia Speaker System with Convertible Soundbar & Multi Connectivity Option.	No.	1	100	100.00
4	LED Camera Light: 11 Inch LED Camera Light Panel EU Plug Cable with Mini Metal Tripod 2700k-5700k Fill Lamp Live Stream etc. (Light with Tripod, Remote & Rotation Ball Head)	No.	4	100	400.00
B	Interactive Board with Accessories:	No.			
1	Interactive Board with Accessories (Viewer 1): 65" Interactive Digital Display, multi-Touch & white board for writing, easy Connect & screen Sharing, detailed specification in annexure. • Heavy Duty movable floor Stand, : 1 Nos • HDMI cable 5 mtr High speed HDMI Cable with Ethernet, 1 Nos • HDMI cable 20 mtr Premium High Speed, - 3 Nos. • 1 in 4 Out 4K/3G/HD/SD HDMI Distribution Amplifier. -1 No • HDMI Video Extender over Ethernet (Receiver & Transmitter) Pair - 1 No Warranty: 3 Years	No.	1	100	100.00
2	(Viewer 1 & Viewer 2): 55 Inches: 138 cm (55 inches) Crystal 4k Series Ultra HD Smart LED TV, Crystal 4k UHD (3840x2160) resolution Refresh Rate, 60Hz, Connectivity 3 HDMI Ports to connect set top box, Blu ray speakers or a gaming console. 1 USB Port connect to hard drives or other USB devices Sound 20 Watts Output, Powerful Speakers with Dolby Digital Plus. Warranty: 3 Years	No.	2	100	200.00
C	Implementation Services & Support				
1	SITC One Time Charges (Electrical, Networking and other necessary accessories for making site operational) including Connectors, Cable, Converter Tools etc		1	100	100.00

Note:

- 1) Technical specifications for each type of equipment to be supplied are provided in Section O.
- 2) All equipment shall be provided with 3 years onsite warranty support adhering to the SLA defined in the tender document.
- 3) The scope of supply and services for each zone shall be common as detailed in Section B, shall include setting up of central call center, district support center with support manpower and spares

WEBEL TECHNOLOGY LIMITED

and PMU unit for the duration of the project (3 years) .

- 4) Bidders must undertake to setup service facilities for timely support as per SLAs, in each district covered under this zone.
- 5) SITC charges must be indicated/quoted based on the number of cameras to be installed at each site, as per the BOQ for the zone.

Zone 2-BOM

The Zone 2 scope of work shall comprise of implementation of VC Systems in Block/Samiti offices as per the details provided in the Scope of Work. The total number of sites in Zone 2 are 102, comprising of associated VC equipment and networking and other items mentioned in the scope of work. The detailed list of sites in Zone 2 are provided in Section – U. The districts covered under Zone 2 are:

- ALIPURDUAR
- MURSHIDABAD
- PURBA BARDHAMAN
- HOWRAH
- JALPAIGURI
- KALIMPONG
- UTTAR DINAJPUR
- DAKSHIN DINAJPUR
- NADIA
- PASCHIM BARDHAMAN
- HOOGHLY

The BoQ for Zone 2 are as shown in the table below:

SL_No	Items Description	Unit	Qty. (per site)	No of Sites	Total Qty
A	Video Conferencing System Components				
1	Desktop i7 12th Gen /16 GB (8+8) /1 TB SSD/Wi-Fi +BT /1000 LAN /WIN-11 pro /23"/3YRS /Office 365, Warranty: 3 Years	No.	1	102	102.00
2	Video Conferencing System / Devices with Expansion Mic. High quality HD 1080p. H 264 (SVC and uvc1.5) 10 X Zoom auto focus Zeiss lens for end camera control. 5 Camera presets, full duplex speaker phones optional expansion microphone beam forming with 4 omni directional Mic. HD audio cloud, integration, communication SaaS PTZ apps, multiple camera mounting option, dockable remote control, Video Crystal clear audio with acoustic each cancellation, noise reduction and intuitive controls with USB plug and play connectivity. Warranty: 3 years	No.	1	102	102.00
3	Soundbox: 2.1 channel 80W Multimedia Speaker System with Convertible Soundbar & Multi Connectivity Option.	No.	1	102	102.00

WEBEL TECHNOLOGY LIMITED

4	LED Camera Light: 11 Inch LED Camera Light Panel EU Plug Cable with Mini Metal Tripod 2700k-5700k Fill Lamp Live Stream etc. (Light with Tripod, Remote & Rotation Ball Head)	No.	4	102	408.00
B	Interactive Board with Accessories:	No.			
1	Interactive Board with Accessories (Viewer 1): 65" Interactive Digital Display, multi-Touch & white board for writing, easy Connect & screen Sharing, detailed specification in annexure. • Heavy Duty movable floor Stand, : 1 Nos • HDMI cable 5 mtr High speed HDMI Cable with Ethernet, 1 Nos • HDMI cable 20 mtr Premium High Speed, - 3 Nos. • 1 in 4 Out 4K/3G/HD/SD HDMI Distribution Amplifier. -1 No • HDMI Video Extender over Ethernet (Receiver & Transmitter) Pair - 1 No Warranty: 3 Years	No.	1	102	102.00
2	(Viewer 1 & Viewer 2): 55 Inches: 138 cm (55 inches) Crystal 4k Series Ultra HD Smart LED TV, Crystal 4k UHD (3840x2160) resolution Refresh Rate, 60Hz, Connectivity 3 HDMI Ports to connect set top box, Blu ray speakers or a gaming console. 1 USB Port connect to hard drives or other USB devices Sound 20 Watts Output, Powerful Speakers with Dolby Digital Plus. Warranty: 3 Years	No.	2	102	204.00
C	Implementation Services & Support				
1	SITC One Time Charges (Electrical, Networking and other necessary accessories for making site operational) including Connectors, Cable, Converter Tools etc		1	102	102.00

Note:

- 1) Technical specifications for each type of equipment to be supplied are provided in Section O
- 1) All equipment shall be provided with 3 years onsite warranty support adhering to the SLA defined in the tender document.
- 2) The scope of supply and services for each zone shall be common as detailed in Section B, shall include setting up of central call center, district support center with support manpower and spares and PMU unit for the duration of the project (3 years) .
- 3) Bidders must undertake to setup service facilities for timely support as per SLAs, in each district covered under this zone.
- 4) SITC charges must be indicated/quoted based on the number of cameras to be installed at each site, as per the BOQ for the zone.

Zone 3 – BOM

The Zone 3 scope of work shall comprise of implementation of VC Systems in Block/Samiti offices as per the details provided in the Scope of Work defined in this tender. The total number of sites in Zone 3 are 49, comprising of detailed list of sites in Zone 3 as provided in Section – U.

WEBEL TECHNOLOGY LIMITED

The Districts covered in Zone 3 are:

- BIRBHUM
- PASCHIM MEDINIPUR
- NORTH 24 PARGANAS

The BoQ for Zone 3 are as shown in the table below:

SL_No	Items Description	Unit	Qty. (per site)	No of Sites	Total Qty
A	Video Conferencing System Components				
1	Desktop i7 12th Gen /16 GB (8+8) /1 TB SSD/Wi-Fi +BT /1000 LAN /WIN-11 pro /23"/3YRS /Office 365, Warranty: 3 Years	No.	1	49	49.00
2	Video Conferencing System / Devices with Expansion Mic. High quality HD 1080p. H 264 (SVC and uvc1.5) 10 X Zoom auto focus Zeiss lens for end camera control. 5 Camera presets, full duplex speaker phones optional expansion microphone beam forming with 4 omni directional Mic. HD audio cloud, integration, communication SaaS PTZ apps, multiple camera mounting option, dockable remote control, Video Crystal clear audio with acoustic each cancellation, noise reduction and intuitive controls with USB plug and play connectivity. Warranty: 3 years	No.	1	49	49.00
3	Soundbox: 2.1 channel 80W Multimedia Speaker System with Convertible Soundbar & Multi Connectivity Option.	No.	1	49	49.00
4	LED Camera Light: 11 Inch LED Camera Light Panel EU Plug Cable with Mini Metal Tripod 2700k-5700k Fill Lamp Live Stream etc. (Light with Tripod, Remote & Rotation Ball Head)	No.	4	49	196.00
B	Interactive Board with Accessories:	No.			
1	Interactive Board with Accessories (Viewer 1): 65" Interactive Digital Display, multi-Touch & white board for writing, easy Connect & screen Sharing, detailed specification in annexure. • Heavy Duty movable floor Stand, : 1 Nos • HDMI cable 5 mtr High speed HDMI Cable with Ethernet, 1 Nos • HDMI cable 20 mtr Premium High Speed, - 3 Nos. • 1 in 4 Out 4K/3G/HD/SD HDMI Distribution Amplifier. -1 No • HDMI Video Extender over Ethernet (Receiver & Transmitter) Pair - 1 No Warranty: 3 Years	No.	1	49	49.00
2	(Viewer 1 & Viewer 2): 55 Inches: 138 cm (55 inches) Crystal 4k Series Ultra HD Smart LED TV, Crystal 4k UHD (3840x2160) resolution Refresh Rate, 60Hz, Connectivity 3 HDMI Ports to connect set top box, Blu ray speakers or a gaming console. 1 USB Port connect to hard drives or other USB devices Sound 20 Watts Output, Powerful Speakers with Dolby Digital Plus.	No.	2	49	98.00

WEBEL TECHNOLOGY LIMITED

	Warranty: 3 Years				
C	Implementation Services & Support				
1	SITC One Time Charges (Electrical, Networking and other necessary accessories for making site operational) including Connectors, Cable, Converter Tools etc		1	49	49.00

Note:

- 1) Technical specifications for each type of equipment to be supplied are provided in Section O.
- 2) All equipment shall be provided with 3 years onsite warranty support adhering to the SLA defined in the tender document.
- 3) The scope of supply and services for each zone shall be common as detailed in Section B, shall include setting up of central call center, district support center with support manpower and spares and PMU unit for the duration of the project (3 years) .
- 4) Bidders must undertake to setup service facilities for timely support as per SLAs, in each district covered under this zone.
- 5) SITC charges must be indicated/quoted based on the number of cameras to be installed at each site, as per the BOQ for the zone.

Support Services Scope – All Zones

The support services proposed to be setup by SI/Bidder is the key for the successful implementation of the project and management of operations over a period of 3 years or more. The current scope of the proposal, encompassed supply and installation of Video Conferencing Systems at site, with three years warranty and onsite support for duration of the 3 years warranty period. The following are the key requirements for bidders' scope for each zone:

- 1) Setup of call center at Kolkata for each zone. Bidders executing multiple zones may setup a single call center setup, with call center manpower dedicated for each zone.
- 2) OEM Repair center/Depot – Centralized OEM repair center/depot for replacement of faulty hardware equipment within the specified SLA period, in Kolkata.
- 3) District Support Center – for each zone, with required manpower and spares for onsite support, as per SLA.

The scope of work for support services shall be applicable for each zone, and successful bidders for each zone must have the setup as per the scope of work for each zone. Detailed information for each of the above must be submitted along with the bid.

1.1.9 Call center support operations

A centralized call center with a toll free number shall be setup in Kolkata by the SI Partner for each zone to be executed, to support the maintenance of the sites in each zone, located all across West Bengal. The support services management will be controlled through the Support Call center and will have required infrastructure and software necessary for service management. The Center will manage the inventory records of all items and spares used in the project and track the status of each item through the support system software.

The Support call center shall be available to receive calls on email/telephone. The call center will have one Manager and call center staff (one for each zone) on rotation basis for high availability operation. Call center staff to

Page **24** of **110**

WEBEL TECHNOLOGY LIMITED

attend the call and perform the following:

- ✓ Identify site (Block Office/Panchayat Samity/Other) and register complaint on system
- ✓ Identify faulty asset from asset code reported and update system
- ✓ Assign call to respective field engineer for replacement, if camera is faulty.
- ✓ If other Active component is faulty, assign stock from central location for dispatch to field location.
- ✓ Update and monitor delivery of replacement stock to field engineer.
- ✓ Monitor dispatch of faulty item from field to repair center.
- ✓ Update repair status and replenish stock status on completion of repair.
- ✓ Close call and update SLA compliance data

1.1.10 Repair Center

Bidders must ensure that repair center will be available from OEMs in Kolkata for rectification of faults and will ensure. Repair center must complete proper repair and send back the item within 7 days to ensure healthy stock status, as part of SLA. In case of any delay, the OEM must arrange for replacement of the faulty item. The details of the OEM repair center shall be provided, as part of the bidding document, for evaluation.

1.1.11 Service & Support Infrastructure Setup in each zone.

The successful bidder(s) (contractor) shall have the required services and support setup, with qualified manpower and adequate spares to ensure delivery of the support services as per the SLA required, across West Bengal.

- Bidders are required to have one service setup at district level in each zone. The service center in each zone must have 2 dedicated support engineers for the project, and should have adequate spares in stock for onsite maintenance support for the 3 years comprehensive warranty support as per SLA.
- Details of existing setup, manpower and location, must be provided with documentary proof, for the purpose of technical evaluation of bid.
- In case the bidders do not have the district level support setup in each zone, the same must be setup within 30 days of award of contract for each zone. An undertaking on the bidders' letterhead to setup the support center, within 30 days of award of the contract, must be submitted along with the bid.

The scope for support services is critical for the success of the project and shall be part of the technical evaluation of the bids.

WEBEL TECHNOLOGY LIMITED

SECTION – D ELIGIBILITY CRITERIA

BIDDERS' ELIGIBILITY CRITERIA

1. The bidder must be a company registered under Companies Act, 1956/2013 or Partnership or LLP or OPC or Proprietary Firm and operational in last 10 (ten) years in India. Documentary (Certificate of incorporation/Relevant document) evidence to be submitted.
2. The bidder must be a System Integrator in IT/ ITeS/ ICT sector. Relevant document to be submitted.
3. The bidder should have their presence in West Bengal State with own office with valid trade license and local GST registration. Valid proof should be submitted along with the bid.
4. The bidder should have valid GST Registration Certificate & PAN. Bidder shall have to submit photocopy of the documents.
5. Bidder should have PF and ESI registration certificate (photocopies must be submitted) AND Bidder should submit the ESI and PF statement for the month of October, November and December 2023.
6. Bidder should have own local call center number (Undertaking letter should be submitted from the bidders). OEM Call Centre number will not be treated as bidder's call center number. Call Center details for bidder with number & details of call center infrastructure (hardware/Software) and manpower must be submitted. Bidder shall have to submit the Complain/Call escalation matrix in their own letterhead with undertaking.
7. Bidder should have minimum 100 (One Hundred) nos. manpower on bidder's payroll. A declaration from the Bidder's HR Department should be submitted.
8. Bidder should have own support center in each zone (Undertaking letter should be submitted from the bidders). The support center in each zone must have minimum 2 onsite support engineers with more than 3 years of experience in hardware/software and networking support (A declaration from the HR Department of the bidder must be submitted in support of the existence of the manpower support in the mentioned areas). Bidders must submit details of support center infrastructure (hardware/Software) and manpower details for each zone separately.
9. The bidder shall have executed "Similar Nature" of single order an amount not less than **Rs.5.00 (Five) Crores** in last 05 (Five) financial years considering FY – (2018-19, 2019-20, 2020-21, 2021-22, 2022-23) in Government Department/PSU/Autonomous Body. References order copy with the completion certificate for the project to be provided.

OR

The bidder shall have executed "Similar Nature" of two orders in total amount not less than **Rs.6.00 (Six) Crores** in last 05 (Five) financial years (considering FY – (2018-19, 2019-20, 2020-21, 2021-22, 2022-23) in Government Department/PSU/Autonomous Body. References order copy with the completion certificate for the project to be provided.

OR

The bidder shall have executed "Similar Nature" of three orders in total amount not less than **Rs.7.00 (Seven) Crores** in last 05 (Five) financial years (considering FY – (2018-19, 2019-20, 2020-21, 2021-22, 2022-23) in Government Department/PSU/Autonomous Body. References order copy with the completion certificate for the project to be provided.
10. The bidder should have average **annual turnover** of not less than **Rs. 35.00 (Thirty five) Crores** in the last 03 (Three) financial years (considering FY –2020-21, 2021-22, 2022-23). Bidder shall have to submit Audited Balance Sheet / Audited Accounts / Auditor Certificate in support of their claim.

WEBEL TECHNOLOGY LIMITED

11. Bidder should have Positive net worth for last 03 (Three) (FY 2020-21, 2021-22, 2022-23) financial years, and submit statement certified by auditor along with bid.
12. The bidder shall have Quality Certificate (ISO 9001:2015). The bidder has to ensure that the certificate remains valid during the life cycle of the project. Copy of Certificate to be submitted.
13. The bidder must submit the Manufacturers Authentication Form (MAF) for Video Conferencing System, Audio System, Desktop Computer, Display and Networking items (Active) as per prescribed format enclosed (Section - P), along with Technical Compliance statements. Without these documents from the OEMs, the offer will be treated as non-responsive and summarily rejected.
14. The bidder shall not have been blacklisted by any State/Central Government or PSU Organization or bilateral / multilateral funding agencies for breach of ethical conduct or fraudulent practices as on date of submission of the proposal (as per DIT guidance note issued on 26-Dec-2011). Declaration on bidder's letter head to be submitted.
15. The bidder shall submit Bid Form (Section – G) duly signed by the authorized signatory of the company as per the format enclosed. Deviation in format may not be accepted.
16. Bidder shall submit NIT Declaration (Section – R) duly signed by the authorized signatory of the company as per the format. Deviation in format may not be accepted.
17. The bidder should comply with the rule 144(xi) of the GFR-2017 on land-border sharing. Declaration on bidder's letter head to be submitted.
18. Average annual turnover of the Desktop OEM should be minimum of Rs. 5,000.00 (five thousand) Crore during last three financial years (considering FY – 2020-21, 2021-22, 2022-23). Supporting documents must be submitted.
19. Average annual turnover of the Video conferencing system OEM should be minimum of Rs. 500.00 (Five Hundred) Crore during last three financial years (considering FY – 2020-21, 2021-22, 2022-2023). Supporting documents must be submitted.
20. Average annual turnover of the Interactive Board OEM should be minimum of Rs. 15000.00 (Fifteen Thousand) Crore during last three financial years (considering FY – 2020-21, 2021-22, 2022-2023). Supporting documents must be submitted.
21. The Bidder should offer products of OEMs which are operational in India in last 10 (ten) years upto 31st March 2023 in India. A declaration on OEM's letterhead to be submitted.

WEBEL TECHNOLOGY LIMITED

SECTION – E

INSTRUCTIONS TO BIDDER

DEFINITIONS

In this document, the following terms shall have following respective meanings:

“Agreement” means the Agreement to be signed between the successful bidder and WTL including all attachments, appendices, all documents incorporated by reference thereto together with any subsequent modifications, the RFP, the bid offer, the acceptance and all related correspondences, clarifications, presentations.

“Acceptance Test Document” means a document, which defines procedures for testing the functioning of installed system. The document will be finalized with the contractor within 7 days of issuance of the Letter of Award.

“Bidder” means any firm offering the solution(s), service(s) and /or materials required in the RFP. The word Bidder when used in the pre award period shall be synonymous with Bidder, and when used after award of the Contract shall mean the successful Bidder.

“Contract” is used synonymously with Agreement.

“Contract Price” means the price to be paid to the Contractor for providing the Solution, in accordance with the payment terms.

“Contractor” means the Bidder whose bid to perform the Contract has been accepted by Tender Committee and is named as such in the Letter of Award.

“Default Notice” mean the written notice of Default of the Agreement issued by one Party to the other.

“Installation” means installation of supplied Hardware & Software.

“Fraudulent Practice” means a misrepresentation of facts in order to influence a procurement process or the execution of a Contract and includes collusive practice among Bidders (prior to or after Bid submission) designed to establish Bid prices at artificial noncompetitive levels and to deprive WTL and eventually Departments of Gov. of W. Bengal of the benefits of free and open competition.

“GoI” shall stand for the Government of India.

“GoWB” means Government of West Bengal.

“DoSE” – Directorate of School Education

“SE” - School Education

“Personnel” means persons hired by the Bidder as employees and assigned to the performance of the Infrastructure Solution or any part thereof.

“Similar Nature of Work” means Works entailing completion of a project in the field of VC for any Govt. Departments or Public Sector Undertakings.

“Project” Supply, Installation, Testing, Commissioning (SITC) and Maintenance of IP Based VC system to be deployed for Distance Learning Facility in 251 units (1 unit at BRAIPRD, Kalyani, Nadia, 1 unit at Zilla Parishad, North 24 Parganas and 249 units at Panchayat Samiti level) of West Bengal.

WEBEL TECHNOLOGY LIMITED

“Services” means the work to be performed by the Bidder pursuant to this Contract, as described in the detailed Scope of Work.

“Interest rate” means “364 days Government of India (GoI) Treasury Bills” rate.

“Law” shall mean any Act, notification, bye law, rules and regulations, directive, ordinance, order or instruction having the force of law enacted or issued by the Central Government and/or the Government of West Bengal or any other Government or regulatory authority or political subdivision of government agency.

“LOI” means issuing of Letter of Intent shall constitute the intention of the WTL to place the Purchase Order with the successful bidder.

“Requirements” shall mean and include schedules, details, description, statement of technical data, performance characteristics, standards (Indian as well as International) as applicable and specified in the Contract.

“Service” means provision of Contracted service viz., operation, maintenance and associated services for DEPLOYED SYSTEMS as per Section titled “Scope of Work”.

“Termination Notice” means the written notice of termination of the Agreement issued by WTL.

“Uptime” means the time period when specified services are available with specified technical and service standards as mentioned in section titled WARRANTY SUPPORT” “%Uptime” means ratio of 'up time' (in minutes) as mentioned in section titled “Warranty support”.

“Service Down Time” (SDT) means the time period when specified services with specified technical and operational requirements as mentioned in section titled “WARRANTY SUPPORT” are not available to Gov. of W. Bengal and its user departments and organizations.

“WTL” means Webel Technology Limited a Govt. of West Bengal undertaking.

1. PRE-BID MEETING

Pre Bid Meeting will be held on 22.03.2024 at 12.00 hrs. (On-Line Meeting). Bidder can send their queries as per format (Section - I) to Manager (Purchase) (purchase@wtl.co.in) by 21.03.2024 3pm. Only the queries received within the stipulated date prior to the Pre Bid Meeting will be answered. Interest bidders are requested to send mail to (purchase@wtl.co.in) for participation of online pre-bid meeting. Based on request WTL will share meeting id / links for meeting. If there is any change in date and time then will inform.

2. COST OF BIDDING

The bidder shall bear all costs associated with the preparation and submission of the bid and WTL will no case be responsible for those costs regardless of the conduct or outcome of the bidding process.

3. BID DOCUMENT

Bidder is expected to examine all instructions, forms, terms and requirement in the bid document. The invitation to bid together with all its attachment thereto shall be considered to be read, understood and accepted by the bidder unless deviations are specifically stated in the seriatim by the bidder. Failure to furnish all information required by the bid document or a bid not substantially responsive to the bid document in every respect may result of the bid.

4. AMENDMENT OF BID DOCUMENT

At any time prior to the deadline for submission of proposals, WTL reserves the right to add/modify/delete any portion of this document by issuance of a Corrigendum, which would be published on the website and will also be made available to the all the Bidder who have been issued the tender document. The Corrigendum shall be binding on all bidders and will form part of the bid documents.

5. MODIFICATION AND WITHDRAWAL OF BIDS

WEBEL TECHNOLOGY LIMITED

The bidder cannot modify or withdraw its bid after submission.

6. LANGUAGE OF BID & CORRESPONDENCE

The proposal will be prepared by the Bidder in English language only. All the documents relating to the proposal (including brochures) supplied by the firm should also be in English, and the correspondence between the Bidder & WTL will be in English language only. The correspondence by fax/E-mail must be subsequently confirmed by a duly signed formal copy.

7. BIDDER'S SOLUTION

The bidders are requested to study the Bill of Material supplied with this document carefully. While working out the solution the bidder has to work with the broad minimum specification provided in the tender documents, conforming to the model, make and Part number (wherever provided). While submitting the bid the bidder has to detail out all components needed to complete the system BOM. The bidder is required quote for each item retaining all major components/sub system detailed and specified. As the contractor will be responsible for smooth functioning of the system, availability of spares during the tenure of the warranty period have to be take care by the contractor to maintain the guaranteed uptime.

8. EARNEST MONEY DEPOSIT (EMD) & TENDER FEE

The bidder shall furnish Online Receipt against payment of Tender Fees and Earnest Money Deposit.

9. REFUND OF EMD

EMD will be refunded to the unsuccessful bidders without interest by following guidelines of circular 3975-F(Y) dated 28/07/2016 on final selection of Successful Bidders.

10. FORMS AND FORMATS

The various inputs for the Techno Commercial as Financial Bids are to be submitted in the format specified. The bidder shall use the form, wherever specified, to provide relevant information. If form does not provide space for any required information, space at the end of the form or additional sheets shall be used to convey the said information. For all other cases, the bidder shall design a form to hold the required information.

11. LACK OF INFORMATION TO BIDDER

The bidder shall be deemed to have carefully examined the Bid document to his entire satisfaction. Any lack of information shall not relieve the bidder of his responsibility to fulfill his obligation under the bid. If bidder has any queries relating to bid document, then he can send the queries before the Pre Bid Meeting.

12. CONTRACT EXECUTION

On receipt of the Letter of Award/Purchase Order the contractor should submit a Performance Bank Guarantee (PBG) equivalent to **10%(TEN Percent) of the total contract value** within three weeks from the date of receipt of Letter of Award/Purchase Order. The PBG should be valid for six month more than the warranty period. All delivery of the material will have to be completed within 45 days from the date of acceptance of contract and the contractor has to ensure all activities leading to the commissioning of the contract to be completed within 180 days from the date of award. Subsequent to the award of contract, the contractor will have to arrange for the requisite material as per BOM..

13. TIME SCHEDULE FOR DELIVERY & INSTALLATION

The project is divided into 3 zones for the purpose of faster implementation and better monitoring and management. It is mandated that any successful bidder may be allowed to implement maximum 2 Zones out of the 3 zones specified, for the purpose of the faster and better implementation management. The following is the timeline expected for the implementation process:

- The project is estimated to be completed within 6 months from the date of tendering.
- The implementation of project for each zone shall be conducted simultaneously with other zones
- The site survey and the project management activities must commence with the award of the contract for each zone.
- The supply and delivery of equipment must be completed within 6 weeks from date of award of contract
- The installation process for each zone is expected to be completed within 8-10 weeks (2 months) for each zone.

WEBEL TECHNOLOGY LIMITED

14. LOCATION FOR DELIVERY & INSTALLATION

The delivery of equipment and hardware/software shall be at site: (As mentioned in Section – B (Scope of Work)). The list of sites in each zone is as provided in the Section - U

1) Zone 1	100 locations
2) Zone 2	102 Locations
3) Zone 3	49 Locations

The bidders shall be required to deliver at site and complete the installation, as per the project plan for implementation to be submitted to WTL, within 1 week of award of contract for each zone.

16. LIQUIDATED DAMAGE / PENALTY

Vendor Termination Clause: -

Termination possibility of MSI in the case of multiple cases of failure to meet SLA terms beyond monthly commitments for 6 continuous months .WTL reserves the right to terminate the contract and WTL will get the job completed by any other competent party. The difference of cost incurred by WTL will be recovered from the contractor and PBG will be invoked.

17. LIABILITY

In case of a default on bidder's part or other liability, WTL shall be entitled to recover damages from the Contractor. In each such instance, regardless of the basis on which WTL is entitled to claim damages from the Contractor (including fundamental breach, negligence, misrepresentation, or other contract or tort claim), Contractor shall be liable for no more than:

- Payment referred to in the Patents and Copyrights clause.
- Liability for bodily injury (including death) or damage to real property and tangible personal property limited to that cause by the Contractor's negligence.
- As to any other actual damage arising in any situation involving non-performance by Contractor pursuant to or in any way related to the subject of this Agreement, the charge paid by WTL for the individual product or Service that is the subject of the Claim. However, the contractor shall not be liable for
- For any indirect, consequential loss or damage, lost profits, third party loss or damage to property or loss of or damage to data.
- For any direct loss or damage that exceeds the total payment for Contract Price made or expected to be made to the Contractor hereunder.

18. PATENTS & COPYRIGHT

If a third party claims that a product delivered by the Contractor to WTL infringes that party's patent or copyright, the Contractor shall defend WTL against that claim at Contractor's expense and pay all costs, damages, and attorney's fees that a court finally awards or that are included in a settlement approved by the Contractor, provided that WTL.

- Promptly notifies Contractor in writing of the claim
- Allows Contractor to control and co-operate with Contractor in the defense and any related settlement negotiations.

Remedies: If such a claim is made or appears likely to be made, WTL would permit Contractor to enable WTL to continue to use the product, or to modify it, or replace it with one that is at least functionally equivalent. If Contractor determines that none of these alternatives is reasonably available, WTL agrees to return the product to Contractor on Contractor's written request. Contractor will then give WTL a credit equal to for a machine. WTL's net book value (provided WTL has followed generally accepted accounting principles for a generally available software product produced by Contractor (Program) the amount paid by WTL or 12 months charges (whichever is lesser) and for materials the amount paid by WTL for the materials. These will be Contractor's entire obligation regarding any claim of infringement.

19. SUSPENSION OF WORK

WTL shall have the power at any time and from time to time by notice to the Contractor to delay or suspend the

WEBEL TECHNOLOGY LIMITED

progress of the work or any part of the work due to any other adequate reasons and on receipt of such notice the contractor shall forthwith suspend further progress of the work until further notice from WTL. The Contractor shall recommence work immediately after receiving a notice to do so from WTL. The whole or any part of the time lost for such delay or suspension shall, if WTL in its absolute discretion thinks fit, but not otherwise, be added to the time allowed for completion.

20. TERMS OF PAYMENT

Payment terms will be on back-to-back basis, i.e., payment will be made only on receipt of payment from end customer (Department of Panchayat & Rural Development). Any scheduled payment for the supply, installation and warranty only, shall be made on back to back basis, by WTL, as depicted below:

1. Payment Against Delivery – 75% of the Cost of Materials (Active and Passive Components) delivered at Installation Site.
2. Payment Against Installation & Commissioning – 10% payment (Active/Passive and SITC Cost).
3. 5% on completion of 1 year warranty period, subject to SLAs agreed upon during the signing of contract, with applicable penalties deducted as per agreement.
4. 5% on completion of 2nd year warranty period, subject to SLAs agreed upon during the signing of contract, with applicable penalties deducted as per agreement.
5. 5% on completion of 3rd year warranty period, subject to SLAs agreed upon during the signing of contract, with applicable penalties deducted as per agreement.

Payment for 3 years Warranty Support charges, shall be paid on back-to-back basis by WTL, after deduction of any penalty for the SLAs agreed.

21. GOVERNING LAWS

This contract should be governed by and interpreted by Arbitration clause in accordance with Laws in force in India. The courts at Kolkata shall have exclusive jurisdiction in all matters arising under the contract. The selected vendor shall keep himself fully informed of all current national, state and municipal law and ordinances. The selected vendor shall at their own expense, obtain all necessary permits and license and pay all fees and taxes required by law. These will be selected vendor's entire obligation regarding any claim of infringement. The selected vendor hereto agrees that it shall comply with all applicable union, state and local laws, ordinances, regulations and codes in performing its obligations hereunder, including the procurement of licenses, permits certificates and payment of taxes where required. The selected vendor shall establish and maintain all proper records (particularly, but without limitation, accounting records) required by any law, code/practice of corporate policy applicable to it from time to time including records and returns as applicable under labor legislation.

22. CORRUPT OR FRAUDULENT

The Tender Committee requires that the bidders under this Tender observe the highest standards of ethics during the procurement and execution of such contracts. For this purpose, the definition of corrupt and fraudulent practices will follow the provisions of the relevant laws in force. The Tender Committee will reject a proposal for award if it detects that the bidder has engaged in corrupt or fraudulent practices in competing for the contract in question. The Tender Committee will declare a firm ineligible, either indefinitely or for a stated period of time, if it at any time determines that the firm has engaged in corrupt and fraudulent practices in competing for, or in executing, a contract.

23. BIDDING CLAUSE

All decisions taken by the Tender Committee regarding the processing of this tender and award of contract shall be final and binding on all parties concerned.

The Tender Committee reserves the right:

- To vary, modify, revise, amend or change any of the terms and conditions mentioned above and,
- To reject any or all the Tender/s without assigning any reason whatsoever thereof or to annul the bidding process and reject all bids at any time prior to award of contract, without thereby incurring any liability to the affected bidder(s) or any obligation to inform the affected bidder(s) of the grounds for such decision.

24. WORKMEN'S COMPENSATION

In every case in which by virtue of the provision of the workmen's compensation Act 1923 or any other relevant

WEBEL TECHNOLOGY LIMITED

acts and rules, compensation to a workman employed by the contractor, is payable, then this should be done by the Contractor. If WTL is obliged to make any compensation under the said rules and acts, then the amount shall be recovered without prejudice, from the bills and due of the Contractor. WTL shall not be bound to contest any claim made against the Contractor in respect of workmen's compensation.

25. CONTRACTOR'S EMPLOYEES

The Contractor shall comply with the provision of all labour legislation including the requirement of the payment of Wage Act 1936 and the rules framed there under and modifications thereof in respect of men employed by him in carrying out the contract. The Contractor must ensure that he complies with PF, ESI regulation for all his deployed employees. The Contractor shall see that all authorized Sub Contractors under him similarly complied with the above requirement.

26. SAFETY MEASURES

The Contractor shall in the course of execution of the work take all necessary precaution for the protection of all persons and property. The Contractor shall take adequate measures to protect the work and prevent accident during the work. In the event of any accident to any person or persons or damage or injury of any description to any person or property due to failure on the part of the contractor in taking proper precautionary measures the contractor shall be responsible for and must make good the loss the damage at his own cost to the satisfaction of the department and employees of the department shall be indemnified from all claims or liabilities arising there from or any expenses incurred on account thereof.

27. EQUIPMENT

All tools & tackles necessary for the work shall have to be procured by the contractor unless otherwise specified elsewhere in these tender documents. The equipment used by the contractor for a particular work must be appropriate for the type of work. The contractor shall maintain the equipment used on the work properly so that they are in good working condition. In no case shall the contractor use defective or imperfect equipment in the work. The contractor shall arrange to replace or repair all defective equipment so that the progress of the work is not hampered. No defective equipment should be left at the site of work and the department shall not be responsible for any loss or damage to any of these equipment during the course of the execution of the work.

28. TERMINATION FOR DEFAULT

WTL may without prejudice to any other remedy or right of claim for breach of contract by giving not less than 30 days written notice of default sent to the contractor, terminate the order in whole or in part. If the contractor materially fails to render any or all the services within the time period specified in the contract or any extension thereof granted by WTL in writing and fails to remedy its failure within a period of thirty days after receipt of default notice from WTL. If the project (delivery, commissioning as well as warranty maintenance support is not carried out according to specification due to deficiency in service as per terms of the contract. In such case WTL will invoke the amount held back from the contractor as PBG.

29. BANKRUPTCY

If the contractor becomes bankrupt or have a receiving order made against him or compound with his creditors or being a corporation commence to be wound up, not being a voluntary winding up for the purpose only or amalgamation or reconstruction, or carry on their business under a receiver for the benefit of their creditors or any of them, WTL shall be at liberty to terminate the engagement forthwith without any notice in writing to the contractor or to the liquidator or receiver or to any person in whom the contractor may become vested and without any compensation to give such liquidator or receiver or other person the option of carrying out the engagement subject to their providing a guarantee for the due and faithful performance of the engagement up to an amount to be determined by WTL.

30. FORCE MAJEURE

It is hereby defined as any cause, which is beyond the control of the Contractor or WTL as the case may be, which such party could not foresee or with a reasonable amount of diligence could not have foreseen and which substantially affect the performance of the contract, such as

- War, Hostilities or warlike operations (whether a state of war be declared or not), invasion, act of foreign enemy and civil war.
- Rebellion, revolution, insurrection, mutiny, usurpation of civil or military, government, conspiracy, riot, civil commotion and terrorist area.

WEBEL TECHNOLOGY LIMITED

- Confiscation, nationalization, mobilization, commandeering or requisition by or under the order of any government or de facto authority or ruler, or any other act or failure to act of any local state or national government authority.
- Strike, sabotage, lockout, embargo, import restriction, port congestion, lack of usual means of public transportation and communication, industrial dispute, shipwreck, shortage of power supply epidemics, quarantine and plague.
- Earthquake, landslide, volcanic activity, fire flood or inundation, tidal wave, typhoon or cyclone, hurricane, nuclear and pressure waves or other natural or physical disaster.

If either party is prevented, hindered or delayed from or in performing any of its obligations under the Contract by an event of Force Majeure, then it shall notify the other in writing of the occurrence of such event and the circumstances of the event of Force Majeure within fourteen days after the occurrence of such event. The party who has given such notice shall be excused from the performance or punctual performance of its obligations under the Contract for so long as the relevant event of Force Majeure continues and to the extent that such party's performance is prevented, hindered or delayed.

The party or parties affected by the event of Force Majeure shall use reasonable efforts to mitigate the effect of the event of Force Majeure upto its or their performance of the Contract and to fulfill its or their obligation under the Contract but without prejudice to either party's right to terminate the Contract.

No delay or nonperformance by either party to this Contract caused by the occurrence of any event of Force Majeure shall.

- Constitute a default or breach of the contract.
- Give rise to any claim from damages or additional cost or expense occurred by the delay or nonperformance. If, and to the extent, that such delay or nonperformance is caused by the occurrence of an event of Force Majeure.

31. INSURANCE COVERAGE

Appropriate insurance to cover all solution components for the transit period and until the time of its acceptance at the respective site is to be taken by the contractor. As the contractor will carry the risk for the material in his books during transit, the contractor should arrange insurance for the total system as period from the dispatch till Acceptance Test is successfully achieved. Further the contractor is to take all required insurance coverage in respect of all its personnel who shall be working on this engagement.

32. WARRANTY & MAINTENANCE

- Contractor will have to provide comprehensive warranty on all components including software from the date of go-live of the solution.
 - 3 year Comprehensive Warranty of all products & onsite maintenance support
 - 2 year additional Comprehensive AMC support may be extended after the expiry of the 3 year Warranty and Onsite support..
- After completion of comprehensive warranty period WTL may go for fresh AMC with the supplier. Hence bidder should maintain sufficient stock of spares with them even after the expiry of the warranty period.
- The Contractor is liable for repairing all or any sort of damage detected during the warranty period completed free of cost.
- During the warranty period of 3 years, no active component should be declared "End of Life". In case it is declared "End of Life" during this period, the vendor has to replace such equipment at their own cost. A letter of Confirmation by OEM shall be mandatory. The rate should be quoted inclusive of warranty.
- Bidders must adhere to the SLAs and a agreement will be signed with the vendor for warranty & support after completion of installation.

WEBEL TECHNOLOGY LIMITED

33. PERFORMANCE BANK GUARANTEE (PBG)

As a guarantee for timely delivery, installation and commissioning of equipment as well as performance of on-site warranty support, as mentioned in Bill of Material, from the date of final acceptance of systems and pertaining to proper running of the systems, the bidder will have to submit **10% of the contract value** as security in the form of Performance Bank Guarantee from any nationalized bank as per format enclosed (Section – O).

34. SI/BIDDER/CONTRACTOR'S RESPONSIBILITIES

Refer Section – A (BACKGROUND & OBJECTIVE OF THE PROJECT) & Section B (Scope of Work)

35. NO WAIVER OF RIGHTS

Neither the inspection by WTL or any of their agents nor any order by WTL for payment of money or any payment for or acceptance of the whole or any part of the works by WTL, nor any extension of time, nor any possession taken by WTL shall operate as a waiver of any provision of the contract or of any power reserved to WTL, or any right to damages here in provided, nor shall any waiver of any breach in the contract be held to be a waiver of any other subsequent breach.

36. GRAFTS, COMMISSIONS, GIFTS, ETC.

It is the Purchaser's policy to require that bidders, suppliers, contractors and consultants under contracts, observe the highest standard of ethics during the procurement and execution of such contracts. Any graft, commission, gift or advantage given, promised or offered by or on behalf of the contractor or his partner, agent, officers, director, employee or servant or any one on his or their behalf in relation to the obtaining or to the execution of this or any other contract with WTL shall in addition to any criminal liability which it may incur, subject the contractor to the cancellation of this and all other contracts and also to payment of any loss or damage to WTL resulting from any cancellation. WTL shall then be entitled to deduct the amount so payable from any monies otherwise due to the contractor under contract.

37. ENFORCEMENT OF TERMS

The failure of either party to enforce at any time any of the provision of this contract or any rights in respect thereto or to exercise any option here in provided shall in no way be construed to be a waiver to such provisions, rights or options or in any way to affect the validity of the contract. The exercise by either party of any of its rights herein shall not preclude or prejudice either party from exercising the same or any other right it may have hereunder.

38. PERIOD OF VALIDITY OF OFFER

For the purpose of placing the order, the proposals shall remain valid till 180 days. During the period of validity of proposals, the rates quoted shall not change. In exceptional circumstances, WTL may ask for extension of the period of validity and such a request shall be binding on Bidders. WTL's request and the response to such a request by various Bidders shall be in writing. A Bidder agreeing to such an extension will not be permitted to increase its rates.

39. TAXES & DUTIES

- The prices shall be inclusive of all taxes & levies including GST and other statutory duties as applicable. Rate of taxes should be indicated separately in the Price Bid.
- Contract Price specified in Price Bid should be based on the taxes & duties and charges prevailing at the date one day prior to the last date of Bid submission.
- Statutory deduction, wherever applicable, shall be made from invoice as per government rules. Necessary certificate will be issued for such deductions.
- Bidder submitting a bid shall produce valid statutory documents / certificates with respect to GST, Income Tax, ROC, Prof. Tax, Trade License, etc. All such documents / certificates shall remain valid on the last date of tender submission.
- In case of inter-state transaction, WTL will provide "Waybill". However, statutory charges, if any will be borne by the bidder.
- GST component of the invoice of the bidder may be kept on hold in case there is any mismatch / irregularity in GST return filing on the part of the bidder.

40. DISCREPANCIES IN BID

WEBEL TECHNOLOGY LIMITED

- Discrepancy between description in words and figures, the rate which corresponds to the words quoted by the bidder shall be taken as correct.
- Discrepancy in the amount quoted by the bidder due to calculation mistake of the unit rate then the unit rate shall be regarded as firm.
- Discrepancy in totaling or carry forward in the amount quoted by the bidder shall be corrected.

41. BID DUE DATE

The online tender has to be submitted not later than the due date and time specified in the Important Dates Sheet. WTL may, at its discretion, on giving reasonable notice by fax, or any other written communication to all prospective bidders who have been issued the bid documents, extend the bid due date, in which case all rights and obligations of the WTL and the bidders, previously subject to the bid due date, shall thereafter be subject to the new bid due date as extended.

42. LATE BID

Any proposal received by WTL after the deadline for submission of proposals may not be accepted.

43. OPENING OF BID BY WTL

Bids shall be opened and downloaded electronically through operation of the process in the e-Tender portal in presence of Tender Committee. Bidders interested to remain present during electronic bid opening may attend the bid opening session at WTL premises at scheduled date & time.

44. CONTACTING WTL

Bidder shall not approach WTL officers beyond office hours and/or outside WTL office premises from the time of the Bid opening to the time of finalization of successful bidder. Any effort by bidder to influence WTL office in the decision on Bid evaluation, bid comparison or finalization may result in rejection of the Bidder's offer. If the bidder wishes to bring additional information to the notice of WTL, must be in writing following the procedure mentioned hereinabove.

45. WTL'S RIGHT TO REJECT ANY OR ALL BIDS

WTL reserves the right to reject any bid and to annul the bidding process and reject all bids at any time prior to award of Contract, without thereby incurring any liability to the affected bidder(s) or any obligation to inform the affected bidder(s) of the grounds for such decision.

46. BID CURRENCIES

Prices shall be quoted in Indian Rupees, inclusive of all prevailing taxes, levies, duties, cess etc.

47. PRICE

- Price should be quoted in the BOQ format only. No deviation is acceptable.
- Price quoted should be firm, inclusive of packing, forwarding, insurance and freight charges.
- Percentage/specified amount of taxes & duties should be clearly mentioned otherwise WTL reserves the right to reject such vague offer.
- Price to be quoted for (SITC) supply, installation & commissioning charges for each site.
- Prices to be quoted shall be inclusive of 3 years onsite warranty maintenance and support.

48. CANVASSING

Canvassing or support in any form for the acceptance of any tender is strictly prohibited. Any bidder doing so will render him liable to penalties, which may include removal of this name from the register of approved Contractors.

49. NON-TRANSFERABILITY OF TENDER

This tender document is not transferable.

50. FORMATS AND SIGNING OF BID

The original and all copies of the proposals shall be neatly typed and shall be signed by an authorized signatory(ies) on behalf of the Bidder. The authorization shall be provided by written Power of Attorney accompanying the proposal. All pages of the proposal, except for un-amended printed literature, shall be initialed by the person or persons signing the proposal. The proposal shall contain no interlineations, erase or overwriting. In order to correct errors made by the Bidder, all corrections shall be done & initialed with date by

WEBEL TECHNOLOGY LIMITED

the authorized signatory after striking out the original words/figures completely.

51. WITHDRAWAL OF BID

Bid cannot be withdrawn during the interval between their submission and expiry of Bid's validity period. Fresh Bid may be called from eligible bidders for any additional item(s) of work not mentioned herein, if so required.

52. INTERPRETATION OF DOCUMENTS

If any bidder should find discrepancies or omission in the specifications or other tender documents, or if he should be in doubt as to the true meaning of any part thereof, he shall make a written request to the tender inviting authority for correction/clarification or interpretation or can put in a separate sheet along with his technical bid document.

53. SPLITTING OF THE CONTRACT AND CURTAILMENT OF WORK

WTL reserve the right to split up and distribute the work among the successful bidders and to curtail any item of work in the schedule partly or fully. The Project consists of 5 zones, consisting of schools and hostels in each zone. The contract for the 5 zones shall be split between 2 or more bidders in order to expedite the completion of the project and a single bidder can be awarded maximum of 3 zones out of 5 zones, for which the bidder has been declared L1.

Only under exceptional circumstances, and at the discretion of WTL tender committee, with permission from the school education department, a bidder may be allowed to implement more than 3 zones.

54. PREPARATION OF TENDER

Tender shall be submitted in accordance with the following instructions:

- a) Bidders must submit the tender for the entire project, including all 5 zones, as per the BoQ and Scope of work specified for each zone. Partial submission or omission of any zone in the technical or price bid, shall lead to rejection of the bid.
- b) Tenders shall be submitted in the prescribed forms. Digital signatures shall be used. Where there is conflict between the words and the figures, the words shall govern.
- c) All notations must be in ink or type written. No erasing or overwriting will be permitted. Mistakes may be crossed out and corrections typed or written with ink adjacent thereto and must be initialed in ink by the person or persons signing the tender.
- d) Tenders shall not contain any recapitulation of the work to be done. Alternative proposals will not be considered unless called for. No written, oral, telegraphic or telephonic proposals for modifications will be acceptable.
- e) Tenders shall be uploaded as notified on or before the date and time set for the opening of tenders in the Notice Inviting Tenders.
- f) Tenders subject to any conditions or stipulations imposed by the bidder are liable to be rejected.
- g) Any bidder may withdraw his tender by written request at any time prior to the scheduled closing time for receipt of tenders and not thereafter.

55. PRE-DISPATCH INSTRUCTION

All materials / equipment supplied against the purchase order shall be subjected to Inspection, check and /or test by the authorized representative from WTL.

56. FINAL INSPECTION

Final inspection will be carried by the authorized representative from WTL.

57. SITE INSPECTION

Bidder can inspect (at their own cost) the sites if required, for which they have to take necessary permission from WTL in writing. WTL will take at least four days to organize such permission.

58. ERASURES OR ALTERNATIONS

The offers with overwriting and erasures may make the tender liable for rejection if each of such overwriting/erasures/manuscript ions is not only signed by the authorized signatory of the bidder. There should be no hand-written material, corrections or alterations in the offer. Technical details must be completely filled up. Correct technical information of the product being offered must be filled in. Filling up of the information

WEBEL TECHNOLOGY LIMITED

using terms such as “OK”, “accepted”, “noted”, “as given in brochure/manual” is not acceptable. The Customer may treat offers not adhering to these guidelines as unacceptable. The Customer may, at its discretion, waive any minor non-conformity or any minor irregularity in the offer. This shall be binding on all bidders and the Tender Committee reserves the right for such waivers.

59. COMPLIANCE WITH LAW

The contractor hereto agrees that it shall comply with all applicable union, state and local laws, ordinances, regulations and codes in performing its obligations hereunder, including the procurement of licenses, permits certificates and payment of taxes where required. The contractor shall establish and maintain all proper records (particularly, but without limitation, accounting records) required by any law, code/practice of corporate policy applicable to it from time to time including records and returns as applicable under labor legislation.

60. CLARIFICATION OF BIDS

During evaluation of the bids, the Customer/Tender Committee, at its discretion may ask the bidder for clarification of its bid. The request for the clarification and the response shall be in writing (fax/email) and no change in the substance of the bid shall seek offered or permitted.

61. QUALITY CONTROL

- The contractor is obliged to work closely with WTL and/or West Bengal State Beverages Corporation Ltd., act within its authority and abide by directive issued by them on implementation activities.
- The contractor will abide by the safety measures and free WTL and West Bengal State Beverages Corporation Ltd. from all demands or responsibilities arising from accident/loss of life, the cause of which is due to their negligence. The bidder will pay all indemnities arising from such incidents and will not hold WTL and West Bengal State Beverages Corporation Ltd. responsible.
- The contractor will treat as confidential all data and information about the system, obtained in the execution of its responsibilities in strict confidence and will not reveal such information to any party without the prior written approval of WTL/ West Bengal State Beverages Corporation Ltd..
- WTL reserves the right to inspect all phases of contractor's operation to ensure conformity to the specifications. WTL shall have engineers, inspectors or other duly authorized representatives made known to the contractor, present during the progress of the work and such representatives shall have free access to the work at all times. The presence or absence of representatives of WTL does not relieve the contractor of the responsibility for quality control in all phases.
- The Court of Kolkata only will have the jurisdiction to deal with and decide any legal matters or dispute whatsoever arising out of the contract.

62. SERVICE LEVEL FOR WARRANTY SUPPORT (SLA)

#	SLA Parameter	Turnaround Time for Support	Target Uptime/year
1	Availability of VC/Audio system	48 Hrs./2 Days	99.00%
2	Availability of Computer, Display Systems, Active Components of Network	48 Hrs./2 Days	99.00%
3	Availability Passive Network	96Hrs/4 Days	98.00%

Definition:

1. “Availability” means availability of
 - VC System operational at each site and other sites listed in each zone
 - Active Components: Switch/Storage & HDD/High End Desktop Computer/UPS
 - Passive Components: Network Points, VMS Software, Lan cables. etc
2. Turnaround time for support: Calculated based on No of Government working days

The support performance shall be calculated for a quarterly/half yearly basis, based on all equipment supplied and based on the calls logged and the resolution of the calls for support. WTL reserves the right to impose penalty on the bidder in case the support SLA performance is lower than the target turnaround time for repair/replacement, as

WEBEL TECHNOLOGY LIMITED

shown below:

- Resolution of complaint for VC System, active and passive components within turnaround time (days) – no penalty
- Resolution of complaint for VC System, active and passive components beyond target turnaround time for support:
 - Rs. 500/- per day, after the allowed turnaround time for support , per Site
 - Rs. 500/- per day after the allowed turnaround time for support, for each of the other active components (Computer, Display System, Switches, UPS)
 - Rs. 400/- per day after the allowed turnaround time for support for passive components, excluding power outlets and other accessories.
 - The total amount of penalty for a six month period shall not exceed 5% of the billable amount for the period.
 - Any fraction of the day on which the repair/replacement is completed, shall be counted as 1 day.
 - The PBG (Performance Bank Guarantee) may be forfeited if the penalty amount for any Quarter/6 month period is higher than 5% of the bill amount for the period (year) and no payment towards Warranty Support shall be made for the same year.

The SLA agreement for service support in compliance to the minimum SLA required must be submitted by the L1 bidder on placement of order. WTL reserves the right to change/modify the SLAs during the finalization of the contractual agreement with the successful bidder.

63. CONSORTIUM CLAUSE :

The Bid can be submitted by an individual company and no consortium/JV is allowed.

64. GENERAL TERMS

- a) All the documents to be submitted by the bidder along with their offer should be duly authenticated by the person signing the offer and if at any point of time during procurement process or subsequently it is detected that documents submitted are forged/tampered/manipulated in any way, the total responsibility lies with the bidder and WTL reserves the full right to take action as may be deemed fit including rejection of the offer and such case is to be kept recorded for any future dealing with them.
- b) No Technical/Commercial clarification will be entertained after opening of the tender.
- c) Quantity mentioned in the tender document is indicative only and orders shall be placed subject to actual requirement. WTL reserve the right to increase or decrease the quantity specified in the tender.
- d) WTL reserve the right to reject or accept or withdraw the tender in full or part as the case may be without assigning the reasons thereof. No dispute of any kind can be raised the right of buyer in any court of law or elsewhere.
- e) WTL reserve the right to ask for clarification in the bid documents submitted by the bidder. Documents may be taken if decided by the committee.
- f) Supporting technical brochures/catalogues indicating each feature in respect of offered model and make must be submitted along with the offer, in absence of which the offer is liable to be ignored.
- g) No dispute by the bidders in regard to Technical/Commercial points will be entertained by WTL and decision taken by the Tender Committee will be final.
- h) Discrepancy in the amount quoted by the bidder due to calculation mistake, the unit rate shall be regarded as firm and the totaling or carry in the amount quoted by the bidder shall be corrected accordingly.
- i) The price offers shall remain firm within the currency of contract and no escalation of price will be allowed.
- j) The acceptance of the tender will rest with the accepting authority who is not bound to accept the lowest or any tender and reserves the right to reject in part or in full any or all tender(s) received and to split up the work among participants without assigning any reason thereof.
- k) The customer/WTL at its discretion may extend the deadline for the submission of Bids.
- l) The Court of Kolkata only will have the jurisdiction to deal with and decide any legal matters or dispute whatsoever arising out of the contract.
- m) Below mentioned clauses are applicable for all OEM / Products & Bidders:

WEBEL TECHNOLOGY LIMITED

Any bidder from a country which shares a land border with India will be eligible to bid in this tender only if the bidder is registered with the Competent Authority [DPIIT OM No.6/18/2019- PPD dated 23.07.2020].

- a. "Bidder" (including the term 'tenderer', 'consultant' or 'service provider' in certain contexts) means any person or firm or company, every artificial juridical person not falling in any of the descriptions of bidders stated hereinbefore, including any agency branch or office controlled by such person, participating in a procurement process.
 - b. "Bidder from a country which shares a land border with India" for the purpose of above- mentioned Order means:
 - i. An entity incorporated, established or registered in such a country; or
 - ii. A subsidiary of an entity incorporated, established or registered in such a country; or
 - iii. An entity substantially controlled through entities incorporated, established or registered in such a country; or
 - iv. An entity whose beneficial owner is situated in such a country; or
 - v. An Indian (or other) agent of such an entity; or
 - vi. A natural person who is a citizen of such a country
- n) The successful bidder shall not be allowed to sub-contract works to any contractor from a country which shares a land border with India unless such contractor is registered with the Competent Authority.

WEBEL TECHNOLOGY LIMITED

SECTION – F

TECHNO COMMERCIAL EVALUATION & AWARDING OF CONTRACT

Evaluation Procedure

- **Eligibility:** The Eligibility Criteria (Section - D) will be evaluated by Tender Committee
 - Bidders qualifying/meeting the eligibility criteria will be considered for further technical evaluation.
 - The bidders will be evaluated on Eligibility Criteria for Bidder and all the OEMs proposed in the bid.
- **Technical Evaluation:** The Tender Committee shall verify the following as part of Technical Evaluation:
 - Technical Specification (Technical Specification with Compliance Statement, (Section – O) Deviation in specification shall not be allowed
 - Technical Capability & Experience – Capability to implement projects of similar nature and value
 - Support and Services capability – Experience in providing support in similar projects in State, technical capacity in terms of manpower, technology and infrastructure in the state
 - Technical solution proposed (Presentation/Demo).
 - Understanding of the solutions proposed/innovations
 - Implementation plan/ approach
 - Support plan/methodology
 - Demonstration
- **Price Bid Evaluation:** Bidder qualified in Technical Specification shall be considered for further evaluation.
 - Bidders with the minimum marks (70 out of 100) will be eligible for price bid evaluation.
 - After qualifying in Technical Specification, qualified bidders will only be considered for Financial Bid evaluation.
- The basis of price bid evaluation shall be “Lowest Competitive Price Bid” for BOQ specified for each Zone separately. That is the technically qualified bidder with the lowest price quoted for each zone will be declared successful bidder for that zone and will be allowed for implementation of the solution within specified time limit and comprehensive warranty and onsite maintenance support for a period of three years.
- No Bidder shall be allowed to implement more than 3 Zones out of the three zones for which the bidder is declared L1. In case the L1 bidder opts out for implementation of any zone, the next lowest (L2) bidders for that zone shall have the opportunity to match the L1 price and the process will continue till a match is found.

The technical evaluation criteria is as detailed in the section below.

Technical Evaluation Process

Sl.	Criteria/ Sub Criteria	Evaluation	Supporting Documents	Marks
1	The bidder must have completed Supply, Installation, Testing and Commissioning of any project of “Similar Nature” in multi-location IP based VC/IT Networking project (min 5 locations), worth all-inclusive cumulative amount of Rs. 1.00 crores only, in any year during last five financial years (considering FY –	10 Marks - One order meeting the requirement for IP based VC project implementation.	Work Completion Certificates/ Go-Live Certificates & Work Order from the client are mandatory.	10

WEBEL TECHNOLOGY LIMITED

	(2018-19, 2019-20, 2020-21, 2021-22, 2022-23) for any Govt. Departments or Public Sector Undertakings, in India.			
2	The bidder shall have executed projects for Network/IT Infrastructure/Data Center of single order for an amount not less than Rs.6.00 Crore in last 05 (Five) financial years (considering FY – (2018-19, 2019-20, 2020-21, 2021-22, 2022-23) in Government Department/PSU/Autonomous Body. References order copy with the completion certificate for the project to be provided.	(One order meeting the requirement, 20 Marks.	Work Completion Certificates/ Go-Live Certificates & Work Order from the client are mandatory.	20
	<u>OR</u>			
	The bidder shall have executed projects for Network/IT Infrastructure/Data Center of two orders in total amount not less than Rs.7.00 Crore in last 05 (Five) financial years (considering FY – (2018-19, 2019-20, 2020-21, 2021-22, 2022-23) in Government Department/PSU/Autonomous Body. References order copy with the completion certificate for the project to be provided.	Two Orders meeting the requirement – 15 Marks		
	<u>OR</u>			
	The bidder shall have executed projects for Network/IT Infrastructure/Data Center of three orders in total amount not less than Rs.9.00 Crore in last 05 (Five) financial years (considering FY – (2018-19, 2019-20, 2020-21, 2021-22, 2022-23) in Government Department/PSU/Autonomous Body. References order copy with the completion certificate for the project to be provided.	Three Orders meeting the requirement – 10 Marks)		
3	Existing Support Infrastructure in West Bengal:			
	1) Bidder must provide details of existing service and support infrastructure in all 3 zones in West Bengal, for last 5 years.	1) List of Service centers, technical manpower resources in service center with contact number and years of experience in support services. (10 Marks)	Documentary evidence of Service/Support setup in each zone in West Bengal, including office address, list of manpower resources with contact number.	20

WEBEL TECHNOLOGY LIMITED

			(1) Service Centers in all 3 zones with manpower = 10 Marks (4 marks for each zone 1&2 and 2 marks for zone 3).	
	2) OEM Repair Center in Kolkata – The Proposed OEMs must have own repair center registered in West Bengal for last 3 years.	1) OEM Repair center details, with the documentation of registration under shops & establishment in Kolkata (5 Marks)	Documentary evidence of OEM repair and service center in Kolkata for all OEMs proposed.	
	3) Call center in Kolkata – Bidders must have own call center in Kolkata with required resources to register complaints on Government working days.	1) Existing Call center setup details with list of resources, names, contact number, and toll free number (5 Marks)	1) Call center details with documentary evidence (5 Marks). (2) Undertaking to setup call center (2 Marks)	
4	Technical Proposal			
	Bidders must submit technical proposal complying to all 3 zones specified in the tender.	Compliance to the Technical Specifications with submitted unpriced BOM with exact make/ model & quantity	Exact Product Catalogue/ Brochure which is available in website/ online. (5 Marks)	20
		Data Sheets & exact Product Catalogue/ Brochure submitted by the bidder as per specifications in the RFP.	All Certificates mentioned in the RFP Document is mandatory (5 Marks)	
		Compliance Certificates for all product OEMs required as per RFP.	Technical compliance & MAF for make/models and OEM compliance specified in the tender; no major non-compliance will be allowed.(10 Marks)	
5	Technical Presentation, Solutions proposed, Demonstration	Solution Overview, Knowledge/ Understanding of the RFP document, Implementation and support process of the Project & Demonstration of the Technology (VC System, Audio System, Display)	1) Presentation – 20 Marks	30
			2) Demonstration of the Technology is mandatory otherwise the bid shall be rejected -- 10 Marks	

- i. **To qualify the technical evaluation, the bidder must score a minimum of 70 marks.**
- ii. **The bidder has to comply technical specifications of all line items.**

WEBEL TECHNOLOGY LIMITED

AWARDING OF CONTRACT

An affirmative Post Qualification determination will be prerequisite for award of the contract to the most overall responsive bidder for each Zone. Bidders, if disqualified in the technical evaluation, it will result in rejection of bidder's bid. Technically qualified bidders for all 5 zones shall be evaluated for price bid. The lowest bidder for each zone shall be determined through price bid evaluation. WTL will award the contract to the successful bidder whose bid has been determined to be substantially responsive after final negotiation may held with the most responsive bidder (L1), if required.

- Bidders must submit price bid for each of the 3 zones. Any non-compliance to the price bid shall lead to rejection.
- L1 Bidders for each zone shall be awarded the contract for the respective zone.
- No bidder shall be awarded for more than 2 zones out of the three. If any bidder is L1 in more than 2 zones, the bidder shall have the right to choose zones out of three zones for awarding of contract.
- The L2 Bidder shall be awarded the contract for the zone(s) not chosen by bidder, if they agree to match the L1 price and the process will continue till the match is found.

This is a turnkey job in a nature, so bidder(s) to quote all the items mentioned in the tender document for all six zones, which can ensure single point contact / sole responsibility of the bidder(s) towards project execution. The successful bidder (s) will have to give security deposit in the form of Performance Bank Guarantee, for the respective Zones for which they shall be awarded the contract.

POST QUALIFICATION

The determination will evaluate the Bidder's financial, technical and support capabilities and will be based on an examination of the documentary evidence of the Bidder's qualification, as well as other information WTL deems necessary and appropriate. This determination may include visits or interviews with the Bidder's client's reference in its bid, site inspection, and any other measures.

PRESENTATION

Eligible bidders will be called for presentation before the tender committee on scheduled dates and time to be informed later.

WEBEL TECHNOLOGY LIMITED

SECTION – G

BID FORM

(Bidders are requested to furnish the Bid Form in the Format given in this section, filling the entire Blank and to be submitted on Letter Head in original)

To
Webel Technology Limited
Plot – 5, Block – BP, Sector - V,
Salt Lake City,
Kolkata – 700091.

Sub: of Supply, Installation, Testing, Commissioning (SITC) and Maintenance of IP Based VC system to be deployed for Distance Learning Facility in 251 units (1 unit at BRAIPRD, Kalyani, Nadia, 1 unit at Zilla Parishad, North 24 Parganas and 249 units at Panchayat Samiti level) of West Bengal.

”
—

Dear Sir,

1. We the undersigned bidder/(s), having read and examined in details the specifications and other documents of the subject tender no. WTL/PNRD/VC/23-24/078 dated 16/03/2024, do hereby propose to execute the job as per specification as set forth in your Bid documents.
2. The prices of all items stated in the bid are firm during the entire period of job irrespective of date of completion and not subject to any price adjusted as per in line with the bidding documents. All prices and other terms & conditions of this proposal are valid for a period of 180 (one hundred eighty) days from the date of opening of bid. We further declare that prices stated in our proposal are in accordance with your bidding.
3. We confirm that our bid prices include all other taxes and duties and levies applicable on bought out components, materials, equipment and other items and confirm that any such taxes, duties and levies additionally payable shall be to our account.
4. Earnest Money Deposit: We have enclosed the EMD remittance details for a sum of Rs. 36,00,000/-.
5. We declare that items shall be executed strictly in accordance with the specifications and documents irrespective of whatever has been stated to the contrary anywhere else in our proposal. Further, we agree that additional conditions, deviations, if any, found in the proposal documents other than those stated in our deviation schedule, save that pertaining to any rebates offered shall not be given effect to.
6. If this proposal is accepted by you, we agree to provide services and complete the entire work, in accordance with schedule indicated in the proposal. We fully understand that the work completion schedule stipulated in the proposal is the essence of the job, if awarded.
7. We further agree that if our proposal is accepted, we shall provide a Performance Bank Guarantee of the value equivalent to ten percent (10%) of the Order value as stipulated in Financial Bid (BOQ), for each zone awarded.
8. We agree that WTL reserves the right to accept in full/part or reject any or all the bids received or split order within successful bidders without any explanation to bidders and his decision on the subject will be final and binding on Bidder.

WEBEL TECHNOLOGY LIMITED

Dated, thisday of2024

Thanking you, we remain,
Yours faithfully

.....
Signature

.....
Name in full

.....
Designation

Signature & Authorized Verified by

.....
Signature

.....
Name in full

.....
Designation

.....
Company Stamp

WEBEL TECHNOLOGY LIMITED

SECTION – H **e-Tender Guidelines**

GUIDANCE FOR E-TENDERING

Instructions / Guidelines for electronic submission of the tenders have been annexed for assisting the Bidders to participate in e-Tendering.

Registration of Bidder:

Any Bidder willing to take part in the process of e-Tendering will have to be enrolled & registered with the Government e-Procurement System through logging on to <https://wbtenders.gov.in>. The Bidder is to click on the link for e-Tendering site as given on the web portal.

Digital Signature Certificate (DSC):

Each Bidder is required to obtain a Class-II or Class-III Digital Signature Certificate (DSC) for submission of tenders from the approved service provider of the National Informatics Centre (NIC) on payment of requisite amount. Details are available at the Web Site stated above. DSC is given as a USB e-Token.

The Bidder can search & download N.I.T. & BOQ electronically from computer once he logs on to the website mentioned above using the Digital Signature Certificate. This is the only mode of collection of Tender Documents.

Participation in more than one work:

A prospective bidder shall be allowed to participate in the job either in the capacity of individual or as a partner of a firm. If, found to be applied severally in a single job all the applications will be rejected.

Submission of Tenders:

Tenders are to be submitted through online to the website stated above in two folders at a time, one in Techno Commercial Proposal & the other is Financial Proposal before the prescribed date & time using the Digital Signature Certificate (DSC). The documents are to be uploaded virus scanned copy duly Digitally Signed. The documents will get encrypted (transformed into non readable formats)

The proposal should contain scanned copies of the following in two covers (folders).

Techno Commercial Cover:

Technical Document1

1. Bid Form as per format (Section – G)
2. Required documents

Technical Document2

1. Copy of N I T duly stamped & signed
2. Declaration of Eligibility Criteria, Section - R

Technical Compliance

WEBEL TECHNOLOGY LIMITED

1. Detailed Technical Specification, Section – O
2. Make, Model & Part Number, Section – N
3. Manufacturer Authorization/OEM Declaration, Section – P/Q

Financial Cover:

BOQ (Bill of Quantity) will be downloaded and same will be uploaded with quoted rates. While uploading BOQ file name shall remain unchanged. Absence of this document shall lead to summary rejection of the bid.

NON-STATUTARY COVER (MY SPACE) CONTAIN FOLLOWING DOCUMENT:

(In each folder, scanned copy will be uploaded with single file having multiple pages)

Sl. No.	Category Name	Sub Category Name	Sub Category Description
A	CERTIFICATES	A1. CERTIFICATES	<ul style="list-style-type: none"> • GST Certificate, • Trade License • PAN
B	COMPANY DETAILS	B1. COMPANY DETAILS 1	<ul style="list-style-type: none"> • Document as per Section – D, Eligibility Criteria • Declaration relevant to Section – D, Eligibility Criteria
		B2. COMPANY DETAILS 2	<ul style="list-style-type: none"> • Order copies & Completion Certificates as per Section – D • Order copies as per evaluation criteria (Section – F)
C	CREDENTIAL	CREDENTIAL 1	<ul style="list-style-type: none"> • Document as per Clause – 6 of Section – D • Call Center details as per Clause -7 of Section – D • Declaration as per Clause no. 12, 13 & 14 of Section – D
		CREDENTIAL 2	<ul style="list-style-type: none"> • Payment Certificate/Completion Certificates as per evaluation criteria (Section – F) • Customer Feedback as per evaluation criteria (Section – F)
D	DECLARATION	DECLARATION 1	Supporting Documents as per Clause – 7, Section D
		DECLARATION 2	<ul style="list-style-type: none"> • Technical Capability of the Bidder as per format (Section – I) • Financial Capability of Bidder as per format (Section – J)
		DECLARATION 3	<ul style="list-style-type: none"> • Bidder's Details as per format (Section – K) • Document as per Clause – 10 of Section – D
		DECLARATION 4	Supporting Documents as per Clause – 7 (b), Part B of Section – D
		DECLARATION 5	Document of Manpower as per evaluation criteria (Section – F)
F	FINANCIAL INFO	P/L & BALANCE SHEET 1	P/L & BALANCE SHEET 2020-2021 & Auditors Certificate for Turnover and Net worth
		P/L & BALANCE SHEET 2	P/L & BALANCE SHEET 2021-2022 & Auditors Certificate for Turnover and Net worth
		P/L & BALANCE SHEET 3	P/L & BALANCE SHEET 2022-2023, & Auditors Certificate for Turnover and Net worth

WEBEL TECHNOLOGY LIMITED

SECTION – I

FORMAT FOR TECHNICAL CAPABILITY OF BIDDER

(Tender No. WTL/PNRD/VC/23-24/078 dated 16/03/2024)

Sl. No.	Project Name	Start Date	End Date / Status	Brief description of project & scope of work (Implementation, operation & maintenance)	Type of project	Approx value of the project	Contact details of the Customer

Authorized Signatory (Signature In full): _____

Name and title of Signatory: _____

Stamp of the Company: _____

Note:

- Type of Project shall indicate the implementation of services (CCTV Surveillance, Networking Setup, System Integration).
- Scope of work shall indicate whether it is implementation, Operation or maintenance.
- Submit Customer Order Copy details of the order indicating the project value, customer contact details, project completion certificate, customer satisfaction certificate etc.

SECTION – J: FORMAT FOR FINANCIAL CAPABILITY OF BIDDER

FORMAT FOR FINANCIAL CAPABILITY OF BIDDER

(Tender No. WTL/PNRD/VC/23-24/078 dated 16/03/2024)

FINANCIAL INFORMATION

Sl. No.	Name of the Bidder	Turnover (Rs. / Crores)		
		2020-2021	2021-2022	2022-2023
1				

Authorized Signatory (Signature In full): _____

Name and title of Signatory: _____

Stamp of the Company: _____

Note:

Submit the Audited Financial Statement / Audited Accounts of the last three financial years.

WEBEL TECHNOLOGY LIMITED

SECTION – K: FORMAT FOR BIDDER'S DETAILS

FORMAT FOR BIDDER'S DETAILS

(Tender No. WTL/PNRD/VC/23-24/078 dated 16/03/2024)

1	Name of the Firm	
2	Registered Office Address	
	Contact Number	
	Fax Number	
	E-mail	
3	Correspondence / Contact address	
	Name & Designation of Contact person	
	Address	
	Contact Number	
	Fax Number	
	E-mail	
4	Is the firm a registered company? If yes, submit documentary proof	
	Year and Place of the establishment of the company	
5	Former name of the company, if any	
6	Is the firm <ul style="list-style-type: none"> a Government/ Public Sector Undertaking a propriety firm a partnership firm (if yes, give partnership deed) a limited company or limited corporation a member of a group of companies, (if yes, give name and address and description of other companies) a subsidiary of a large corporation (if yes give the name and address of the parent organization). If the company is subsidiary, state what involvement if any, will the parent company have in the project. 	
7	Is the firm registered with Sales Tax department? If yes, submit valid VAT Registration certificate.	
8	Is the firm registered for Service Tax with Central Excise Department (Service Tax Cell)? If yes, submit valid Service Tax registration certificate.	
9	Total number of employees. Attach the organizational chart showing the structure of the organization.	
10	Are you registered with any Government/ Department/ Public Sector Undertaking (if yes, give details)	
11	How many years has your organization been in business under your present name? What were your fields when you established your organization	
12	What type best describes your firm? (Purchaser reserves the right to verify the claims if necessary) <ul style="list-style-type: none"> Manufacturer Supplier System Integrator Consultant Service Provider (Pl. specify details) Software Development Total Solution provider (Design, Supply, Integration, O&M) IT Company 	
13	Number of Offices in district head quarters in West Bengal	
14	Is your organization has ISO 9001:2015 certificates?	
15	List the major clients with whom your organization has been / is currently associated.	
16	Have you in any capacity not completed any work awarded to you? (If so, give the name of project and reason for not completing the work)	
17	Have you ever been denied tendering facilities by any Government / Department / Public sector Undertaking? (Give details)	

Authorized Signatory (Signature In full): _____

Name and title of Signatory: _____

WEBEL TECHNOLOGY LIMITED

Company Rubber Stamp: _____

SECTION – L

FORMAT FOR PRE-BID MEETING QUERIES

(Tender No. WTL/PNRD/VC/23-24/078 dated 16/03/2024)

Name of the Bidder: _____

Queries

Sl. No.	Section No.	Clause No.	Page No.	Queries

Authorized Signatory (Signature In full): _____

Name and title of Signatory: _____

Company Rubber Stamp: _____

Note: The filled form to be submitted in XLS & PDF Format. There is a cutoff date for receiving of queries before Pre Bid Meeting. Queries received after the cutoff period will not be accepted. The Purchaser reserves the right to respond all or selected queries only over e-mail.

WEBEL TECHNOLOGY LIMITED

SECTION – M

PROFORMA FOR PERFORMANCE BANK GUARANTEE

(On non-judicial stamp paper of appropriate value to be purchased in the name of executing Bank)

PROFORMA OF BANK GUARANTEE FOR SECURITY DEPOSIT –CUM-PRFORMANCE GUARANTEE

Ref

Bank Guarantee no.....

Date.....

PROFORMA OF PBG

KNOW ALL MEN BY THESE PRESENTS that in consideration of WEBEL TECHNOLOGY LIMITED, a Government of West Bengal Undertaking incorporated under the Companies Act, 1956 having its Registered office at Webel Technology Limited, Plot 5, Block BP, Sector V, Kolkata-700 091 (hereinafter called "The Purchaser") having agreed to accept from _____ (hereinafter called "The Contractor") Having its Head Office at _____, a Bank guarantee for Rs. _____ in lieu of Cash Security Deposit for the due fulfillment by the Contractor of the terms & conditions of the Work Order No. _____ dated _____ issued by the Purchaser for _____ (hereinafter called "the said work order _____ dated _____"). We _____ (Name & detailed address of the branch) (hereinafter called "the Guarantor") do hereby undertake to indemnify and keep indemnified the Purchaser to the extent of Rs. _____ (Rupees _____) only against any loss or damage caused to or suffered by the Purchaser by reason of any breach by the Contractor of any of the terms and conditions contained in the said Work Order No. _____ dated _____ of which breach the opinion of the Purchaser shall be final and conclusive.

(2) AND WE, _____ DO HEREBY Guarantee and undertake to pay forthwith on demand to the Purchaser such sum not exceeding the said sum of _____ Rupees _____) only as may be specified in such demand, in the event of the Contractor failing or neglecting to execute fully efficiently and satisfactorily the order for _____ Work Order no. , _____ dated _____

(3) WE _____ further agree that the guarantee herein contained shall remain in full force and effect during the period that would be taken for the performance of the said order as laid down in the said Work Order No. _____ dated _____ including the warranty obligations and that it shall continue to be enforceable till all the dues of the Purchaser under or by virtue of the said Work Order No. _____ dated _____ have been fully paid and its claims satisfied or is charged or till the Purchaser or its authorized representative certified that the terms and conditions of the said Work Order No. _____ dated _____ have been fully and properly carried out by the said contractor and accordingly discharged the guarantee.

(4) We _____ the Guarantor undertake to extend the validity of Bank Guarantee at the request of the contractor for further period of periods from time to time beyond its present validity period failing which we shall pay the Purchaser the amount of Guarantee.

(5) The liability under the Guarantee is restricted to Rs. _____ (Rupees _____) only and will expire on _____ and unless a claim in writing is presented to us or an action or suit to enforce the claim is filled against us within 3 months from _____ all your rights will be forfeited and we shall be relieved of and discharged from all our liabilities (thereinafter)

(6) The Guarantee herein contained shall not be determined or effected by liquidation or winding up or

WEBEL TECHNOLOGY LIMITED

insolvency or closer of the Contractor.

(7) The executants has the power to issue this guarantee on behalf of Guarantor and holds full and valid power of Attorney granted in his favour by the Guarantor authorizing him to execute the Guarantee.

(8) Notwithstanding anything contained herein above, our liability under this guarantee is restricted to Rs. _____ (Rupees _____) only and our guarantee shall remain in force up to _____ and unless a demand or claim under the guarantee is made on us in writing on or before _____ all your rights under the guarantee shall be forfeited and we shall be relieved and discharged from all liabilities there under.

WE, _____ lastly undertake not to revoke this guarantee during the currency except with the previous consent of the Purchaser in writing. In witness whereof we _____ have set and subscribed our hand on

this _____ day of _____.

SIGNED, SEALED AND DELIVERED

WITNESS

1) _____

(Stamp of the executants)

2) _____
(Name & address in full with
Rubber Stamp)

WEBEL TECHNOLOGY LIMITED

INSTRUCTIONS FOR FURNISHING BANK GUARANTEE

2. Bank Guarantee (B.G.) for Advance payment, Mobilization Advance, B.G. for security Deposit-cum-Performance Guarantee, Earnest Money should be executed on the Non-Judicial Stamp paper of the applicable value and to be purchased in the name of the Bank.
3. The Executor (Bank authorities) may mention the Power of Attorney No. and date of execution in his/her favour with authorization to sign the documents. The Power of Attorney is to be witnessed by two persons mentioning their full name and address.
3. The B.G. should be executed by a Nationalized Bank/ Scheduled Commercial Bank preferably on a branch located in Kolkata. B.G. from Co-operative Bank / Rural Banks is not acceptable.
4. A Confirmation Letter of the concerned Bank must be furnished as a proof of genuineness of the Guarantee issued by them.
5. Any B.G. if executed on Non-Judicial Stamp paper after 6 (six) months of the purchase of such stamp shall be treated as Non-valid.
6. Each page of the B.G. must bear signature and seal of the Bank and B.G. Number.
7. The content of the B.G. shall be strictly as Proforma prescribed by WTL in line with Purchase Order /LOI/ Work Order etc. and must contain all factual details.
8. Any correction, deletion etc. in the B.G. should be authenticated by the Bank Officials signing the B.G.
9. In case of extension of a Contract the validity of the B.G. must be extended accordingly.
10. B.G. must be furnished within the stipulated period as mentioned in Purchase Order / LOI / Work Order etc.
11. Issuing Bank / The Vendor are requested to mention the Purchase Order / Contract / Work Order reference along with the B. G. No. for making any future queries to WTL

WEBEL TECHNOLOGY LIMITED**SECTION – N**

(Tender No. WTL/PNRD/VC/23-24/078 dated 16/03/2024)

MAKE, MODEL & PART NUMBER**Zone 1**

The compliance for total 100 sites in the Zone 1 is as follows:

Sl.	Item	Unit	Quantity	Make	Model	Part No.
A	Video Conferencing System Components					
1	Desktop i7 12th Gen /16 GB (8+8) /1 TB SSD/DVDRW/Wi-Fi +BT /1000 LAN /WIN-11 pro /23"/3YRS /Office 365, Warranty: 3 Years	No.	100			
2	Video Conferencing System / Devices with Expansion Mic. High quality HD 1080p. H 264 (SVC and uvc1.5) 10 X Zoom auto focus Zeiss lens for end camera control. 5 Camera presets, full duplex speaker phones optional expansion microphone beam forming with 4 omni directional Mic. HD audio cloud, integration, communication SaaS PTZ apps, multiple camera mounting option, dockable remote control, Video Crystal clear audio with acoustic each cancellation, noise reduction and intuitive controls with USB plug and play connectivity. Warranty: 3 years	No.	100			
3	Soundbox: 2.1 channel 80W Multimedia Speaker System with Convertible Soundbar & Multi Connectivity Option.	No.	100			
4	LED Camera Light: 11 Inch LED Camera Light Panel EU Plug Cable with Mini Metal Tripod 2700k-5700k Fill Lamp Live Stream etc. (Light with Tripod, Remote & Rotation Ball Head)	No.	400			
B	Interactive Board with Accessories:	No.				
1	Interactive Board with Accessories (Viewer 1): 65" Interactive Digital Display, multi-Touch & white board for writing, easy Connect & screen Sharing, detailed specification in annexure. • Heavy Duty movable floor Stand, : 1 Nos • HDMI cable 5 mtr High speed HDMI Cable with Ethernet, 1 Nos • HDMI cable 20 mtr Premium High Speed, - 3 Nos. • 1 in 4 Out 4K/3G/HD/SD HDMI Distribution Amplifier. -1 No • HDMI Video Extender over Ethernet (Receiver & Transmitter) Pair - 1 No Warranty: 3 Years	No.	100			
2	(Viewer 1 & Viewer 2): 55 Inches: 138 cm (55 inches) Crystal 4k Series Ultra HD Smart LED TV, Crystal 4k UHD (3840x2160) resolution Refresh Rate, 60Hz, Connectivity 3 HDMI Ports to connect set top box, Blu ray speakers or a gaming	No.	200			

WEBEL TECHNOLOGY LIMITED

	console. 1 USB Port connect to hard drives or other USB devices Sound 20 Watts Output, Powerful Speakers with Dolby Digital Plus. Warranty: 3 Years					
--	---	--	--	--	--	--

Authorized Signatory (Signature In full): _____

Name and title of Signatory: _____

Company Rubber Stamp: _____

WEBEL TECHNOLOGY LIMITED

Zone 2

The compliance for total 102 sites in the Zone 2 is as follows:

Sl.	Item	Unit	Quantity	Make	Model	Part No.
A	Video Conferencing System Components					
1	Desktop i7 12th Gen /16 GB (8+8) /1 TB SSD/DVDRW/Wi-Fi +BT /1000 LAN /WIN-11 pro /23"/3YRS /Office 365, Warranty: 3 Years	No.	102			
2	Video Conferencing System / Devices with Expansion Mic. High quality HD 1080p. H 264 (SVC and uvc1.5) 10 X Zoom auto focus Zeiss lens for end camera control. 5 Camera presets, full duplex speaker phones optional expansion microphone beam forming with4 omni directional Mic. HD audio cloud, integration, communication SaaS PTZ apps, multiple camera mounting option, dockable remote control, Video Crystal clear audio with acoustic each cancellation, noise reduction and intuitive controls with USB plug and play connectivity. Warranty: 3 years	No.	102			
3	Soundbox: 2.1 channel 80W Multimedia Speaker System with Convertible Soundbar & Multi Connectivity Option.	No.	102			
4	LED Camera Light: 11 Inch LED Camera Light Panel EU Plug Cable with Mini Metal Tripod 2700k-5700k Fill Lamp Live Stream etc. (Light with Tripod, Remote & Rotation Ball Head)	No.	408			
B	Interactive Board with Accessories:	No.				
1	Interactive Board with Accessories (Viewer 1): 65" Interactive Digital Display, multi-Touch & white board for writing, easy Connect & screen Sharing, detailed specification in annexure. • Heavy Duty movable floor Stand, : 1 Nos • HDMI cable 5 mtr High speed HDMI Cable with Ethernet, 1 Nos • HDMI cable 20 mtr Premium High Speed, - 3 Nos. • 1 in 4 Out 4K/3G/HD/SD HDMI Distribution Amplifier. -1 No • HDMI Video Extender over Ethernet (Receiver & Transmitter) Pair - 1 No Warranty: 3 Years	No.	102			
2	(Viewer 1 & Viewer 2): 55 Inches: 138 cm (55 inches) Crystal 4k Series Ultra HD Smart LED TV, Crystal 4k UHD (3840x2160) resolution Refresh Rate, 60Hz, Connectivity 3 HDMI Ports to connect set top box, Blu ray speakers or a gaming console. 1 USB Port connect to hard drives or other USB devices Sound 20 Watts Output, Powerful Speakers with Dolby Digital Plus.	No.	204			

WEBEL TECHNOLOGY LIMITED

	Warranty: 3 Years					
--	-------------------	--	--	--	--	--

Authorized Signatory (Signature In full): _____

Name and title of Signatory: _____

Company Rubber Stamp: _____

Zone 3

The compliance for total 49 sites in the Zone 3 is as follows:

Sl.	Item	Unit	Quantity	Make	Model	Part No.
A	Video Conferencing System Components					
1	Desktop i7 12th Gen /16 GB (8+8) /1 TB SSD/DVDRW/Wi-Fi +BT /1000 LAN /WIN-11 pro /23"/3YRS /Office 365, Warranty: 3 Years	No.	49			
2	Video Conferencing System / Devices with Expansion Mic. High quality HD 1080p. H 264 (SVC and uvc1.5) 10 X Zoom auto focus Zeiss lens for end camera control. 5 Camera presets, full duplex speaker phones optional expansion microphone beam forming with 4 omni directional Mic. HD audio cloud, integration, communication SaaS PTZ apps, multiple camera mounting option, dockable remote control, Video Crystal clear audio with acoustic each cancellation, noise reduction and intuitive controls with USB plug and play connectivity. Warranty: 3 years	No.	49			
3	Soundbox: 2.1 channel 80W Multimedia Speaker System with Convertible Soundbar & Multi Connectivity Option.	No.	49			
4	LED Camera Light: 11 Inch LED Camera Light Panel EU Plug Cable with Mini Metal Tripod 2700k-5700k Fill Lamp Live Stream etc. (Light with Tripod, Remote & Rotation Ball Head)	No.	196			
B	Interactive Board with Accessories:	No.				
1	Interactive Board with Accessories (Viewer 1): 65" Interactive Digital Display, multi-Touch & white board for writing, easy Connect & screen Sharing, detailed specification in annexure. • Heavy Duty movable floor Stand, : 1 Nos • HDMI cable 5 mtr High speed HDMI Cable with Ethernet, 1 Nos • HDMI cable 20 mtr Premium High Speed, - 3 Nos. • 1 in 4 Out 4K/3G/HD/SD HDMI Distribution Amplifier. -1 No	No.	49			

WEBEL TECHNOLOGY LIMITED

	• HDMI Video Extender over Ethernet (Receiver & Transmitter) Pair – 1 No Warranty: 3 Years					
2	(Viewer 1 & Viewer 2): 55 Inches: 138 cm (55 inches) Crystal 4k Series Ultra HD Smart LED TV, Crystal 4k UHD (3840x2160) resolution Refresh Rate, 60Hz, Connectivity 3 HDMI Ports to connect set top box, Blu ray speakers or a gaming console. 1 USB Port connect to hard drives or other USB devices Sound 20 Watts Output, Powerful Speakers with Dolby Digital Plus. Warranty: 3 Years	No.	98			

Authorized Signatory (Signature In full): _____

Name and title of Signatory: _____

Company Rubber Stamp: _____

Section – O

**TECHNICAL SPECIFICATION COMPLIANCE STATEMENT
FOR Zone - 1**

(Tender No. WTL/PNRD/VC/23-24/078 dated 16/03/2024)

ALL-IN-ONE COMMERCIAL DESKTOP COMPUTER:

Feature	Specification	Compliance (Y/N)	Remarks
Processor	Intel i7 13700 12 th gen or higher		
Memory	16GB DDR5 (2 x 8GB) or higher		
Chipset	Intel Q670 chipset		
Hard drive	1TB SSD NVMe		
Operating System	Win 11 SL/ Home		
Others	Display Port, HDMI port, RJ-45, Min. 5 USB Ports, 10Gbps, Internal Speaker, Integrated WiFi + BT, Hardware TPM 2 MP IR CAMERA WITH PRIVACY OPTION/WITH INTEGRATED POWER SUPPLY		
Display	23.8" IPS panel		
S/W	MS office Home & Business		
Warranty	3 Years Onsite		
Certifications	EPEAT, Energy star, ISO 9001, 14001, 27001, 45001,ROHS, UL, FCC		

Specification for Video Conferencing Camera & Expansion Mic.

1 Eligibility criteria for OEMs for Integrated VC System

Sl.	General Conditions	Compliance with Document/Undertaking
1	Complete camera ,speakerphone , remote control and microphone should be an integrated single OEM solution for ease of use and seamless experience.	
2	System should support Bluetooth and NFC (Near Field Communication) for audio call integration with mobile phone in the conference room.	
3	System must have all required certification FCC , CE , RoHS and comply to India E-waste management rules	
4	System should be Indian Standard: 9000 certified by any of the NABL government laboratory.	

WEBEL TECHNOLOGY LIMITED

5	OEM for the system should be ISO 9001:2008 certified.	
6	All required components of the system should have Government of India - Ministry of Communication & IT approval (WPC - Wireless and planning coordination certified)	
7	OEM for the system should be listed in India for more than 5 years as on bid calling date.	
8	To support bidder and for better service to end customer, OEM should have minimum 40 or more authorized service centres across India with atleast one service centre in each of the metro cities : Kolkata, Delhi , Mumbai , Bangalore , Chennai from the last 3 years as on bid calling date.	
10	OEM for the system should be innovative and must have international recognition from Wainhouse , Frost & Sullivan , let's do video , redden etc.	
11	OEM should be profitable organization with overall turnover of minimum 2 billion USD globally for the last 2 years.	
12	OEM for integrated system should be innovative and must have atleast 100 patents awarded to it's name from day one.	
13	The OEM must not be blacklisted or banned by any State/Central Government, Semi-Government or PSU and any other GOVT. organization in INDIA	

Sl No	Feature	Specification	Compliance (Y/N)	Remarks
1	General Requirement (OEM Eligibility Criteria)	Complete camera, speakerphone, remote control and microphone should be an integrated single OEM solution for ease of use and seamless experience.		
		System should support Bluetooth and NFC (Near Field Communication) for audio call integration with mobile phone in the conference room.		
		System must have all required certification FCC, CE, RoHS and comply to India E-waste management rules		
		System should be Indian Standard: 9000 certified by any of the NABL government laboratory.		
		OEM for the system should be ISO 9001:2008 certified.		
		All required components of the system should have Government of India - Ministry of Communication & IT approval (WPC - Wireless and planning coordination certified)		
		OEM for the system should be listed in India for more than 5 years as on bid calling date.		
		To support bidder and for better service to end customer, OEM should have minimum 40 or more authorized service centers across India with at least one service center in each of the metro cities : Delhi , Mumbai , Bangalore , Chennai from the last 3 years as on bid calling date.		

WEBEL TECHNOLOGY LIMITED

		OEM for the system should be innovative and must have international recognition from Wainhouse , Frost & Sullivan , let's do video , red dot etc.		
		OEM should be profitable organization with overall turnover of minimum 2 billion USD globally for the last 2 years.		
		OEM for integrated system should be innovative and must have inml100 patents awarded to it's name from day one.		
2	Camera	OEM for the system should have option to provide SDK free of cost for the integration of the system in any workflow / Application.		
		System should support onboard H.264 with Scalable Video Coding (SVC) , UVC 1.5 for processing of video within the camera and usb Audio class (UAC) to save computing resources on end device/ laptop/PC or codec.		
		Output: H.264 ,YUY2,MJPEG.		
		Optical Resolution: 2 MP (1080p30fps or above).		
		Sensor size: 1/3" CMOS		
		SNR >= 35dB		
		Port : USB 2.0 for end device connectivity.		
		FOV : Diagonal 90°, Horizontal 81.9°and vertical 59°or above.		
		Aperature : F2.0 ~ 3.0		
		Should support autofocus.		
		Smooth Motorized pan, tilt and zoom from remote control and as well as manually from the speakerphone / control unit placed on the table.		
		It should also be possible for user to control camera via simple software application in PC & Mac.		
		Lens of the camera should have ZEISS certification		
		Should support FECC : Far End camera control.		
		Zoom: 10x lossless or better		
		Camera Control: Standard VISCA / Mini din 6 pin or equivalent.		
		Motorized 260- Degree Pan, 130-degree tilt		
		+/-90° Pan range , +35°/-45° tilt range		
		Minimum illumination : 10 lux		
		Preset : 5 or above		
		Should have Kensington Security Slot to ensure physical security of camera in conference room.		
3	Integrated Speakerphone	To be supplied with required power adaptor, regional plugs, cables minimum 5mts and mounting bracket.		
		LED for speakerphone streaming , mute , hold and bluetooth pairing so that user is aware about the status of the device.		
		LCD to show caller ID, call duration and other functional responses.		
		Should have Kensington Security Slot to ensure physical security of device in conference room.		

WEBEL TECHNOLOGY LIMITED

		Audio Technology : Must support Echo cancellation, Noise reduction, ultra-wideband audio.		
		Must have full duplex performance for real time communication.		
		Frequency response: 120Hz – 14KHz		
		Sensitivity: 83dBSPL +/-3dB at 1W/1M		
		Max output: 91dBSPL		
4	Integrated Microphones	Distortion: <5 % from 200Hz		
		Four inbuilt omni-directional microphones supporting 20-foot or more diameter range		
		Frequency response: 100Hz – 11KHz		
		Sensitivity: -28dB +/-3dB		
		System should be supplied with atleast 2 expansion microphones to increase coverage for large conference rooms.		
5	Expansion Microphones	Integrated microphone and supported expansion microphone should have mute/unmute button so that user sitting at any corner of conference room have provision to mute/ unmute the complete system with LED indication on each of microphone.		
		Distortion: <1 % @ 1KHz at 106dB		
		Type : Omni-directional		
		Should support noise canceling individually.		
		Frequency response : 100hz - 20 kHz		
6	Cable Management and ambience	Sensitivity : -24dB		
		LED color indicator : Blue -active call ; Red - microphone Mute.		
		System should support central mountable cable manager for connection of all components in system so that single USB cable(for camera , speakerphone and microphone) with 3mts of minimum length is connected to end device (laptop,Mac, Codec ,desktop and thin client)		
		All necessary cables for all the components , power adaptors , regional plugs, quick start guide along with the mounting bracket should be supplied by the OEM.		
		Type : Infrared with removable / replaceable batteries.		
7	Remote Control	System should be supplied with all-in-one remote control to manage Camera (Pan,Tilt, Zoom, Preset) , Speakerphone (volume +/-) and Microphone (mute /unmute)		
		System should have the stand / dockable space for the remote control.		
		Range 8.5 mts or more		
8	Operating Temperature	Camera should operate from -10 to 55 degree celsius day one and certificate for the same to be furnished.		

WEBEL TECHNOLOGY LIMITED

Specification for 65" Interactive Panel

Sl No	Features	Specifications	Compliance Y/N	Remarks
1	Active Screen Size ("inch)	65"		
2	Display Backlight	DLED		
3	Display Area	1489mm(H) X 897mm(V)		
4	Display Ratio	16 : 9		
5	Resolution	3840 x 2160 or better		
6	Display Colors	10 bit or better		
7	Brightness	440nit(w/o Glass, max)		
8	Contrast Ratio (Typical)	1200:01:00		
9	Response Time (Typical)	8ms (G to G) Panel Response Time		
10	Viewing Angle	178 x 178 Degree		
11	Display Orientation	Landscape		
12	Speakers	Inbuilt		
13	Maxpower Output	2x15 Watts		
14	Speaker Position	Seamlessly mounted in lower side of the display. Front facing, Forward through		
15	Touch Technology Deployment	Inbuilt Touch and No overlay is allowed		
16	Touch Sensor	Advanced IR		
17	Surface material of touch surface	Anti-Glare & Anti-Finger Print Glass		
18	Protection	3M Antiglare		
19	Touch Screen Writing Tools	2 x Touch Pen included and Finger Both		
20	Positioning Accuracy	±1mm		
21	Transparency	88% or better		
22	Surface Hardness	9H or better		
23	Glass thickness	4 mm		
24	HID Support	Yes		
25	Touch Points in Windows	40 Touch Points		
26	Touch Points in Embedded OS	32 Touch Points		
27	Writing Tool	2 x Touch Pen included and Finger Both		
28	Communication Interface	Inbuilt USB-A type		
29	Ports	3x HDMI In, 1xHDMI Out, 1x VGA, 2xTouch USB Out,RJ45 LAN In, RJ45 LAN Out, RS232C In/Out, 4xUSB 3.0, 1xUSB 2.0, 1xUSB Type-C, Audio In, Audio Out Optical SPDIF		
30	OPS Slot	OPS Slot Inbuilt		
31	Multimedia File Formats Supported	Support all major types of multi-media files		

WEBEL TECHNOLOGY LIMITED

32	GUI - Graphic User Interface	Android OS with GUI		
33	Software Features	Software must support all basic features like Pen selection, width selection, Color change, Background change, erase, Multiple page navigation, saving of file in PDF and JPEG. Split-Screen with Input source.		
34	Special software Features	Whiteboard software should give option to navigate page with 2 fingers without using menu. Special eraser to erase while writing without selecting menu.		
35	Customized GUI	User can easily customized their own background and logo's		
36	Multimedia File Formats Supported	Support all major types of multi-media files		
37	RAM	4GB		
38	ROM	32GB		
39	Power consumption	220 Watts Typical		
40	Android Version	Android 11		
41	Android resolution	4K		
42	Storage Temperature/Humidity	-15°C~55°C/20~90%RH(Non coagulation)		
43	Working Temperature/Humidity	0°C-40°C/20~80%RH(Non coagulation)		
44	Manufacturer's authorization	The bidder must submit the authorization certification		

Specification for 55" Display

OEM Eligibility Criteria:

General Conditions	Compliance with Document from OEM
OEM should have presence in India for more than 10 years	
The manufacturer should have minimum annual turnover of Rupees 500 Crores (each year) during last three financial years.	
OEM should have its legal Office in West Bengal	
OEM should have complete direct service set-up in West Bengal with a service team of minimum 2 trained Service Manager/Engineers on OEM's payroll. They should have either Bachelor / Diploma degree	
OEM Should have ISO 9001:2015 & BS OHSAS 18001:2007 or ISO45001:2018 certifications.	
The OEM must not be blacklisted or banned by any State/Central Government, Semi-Government or PSU and any other GOVT. organization in INDIA	

Qty	
Make	

WEBEL TECHNOLOGY LIMITED

Model	
Part No.	

Specifications:

Sl. No	Feature	Specifications	Compliance (Y/N)	Remarks
1	Display Size(Diagonal)	55"		
2	Resolution	3840x2160		
3	Backlight Unit Type	Direct		
4	Brightness	400 nits		
5	Dynamic Contrast Ratio (Dynamic MCI(Hz))	10,00,000:1		
6	Static(Panel) Contrast Ratio	1,200:1		
7	Refresh Rate	60Hz		
8	HDR(10PRO/HLG)	Yes		
9	Speaker (Sound Output)	10W + 10 W		
10	Digital (Terrestrial, Cable, Satellite)	DBV-T2/C		
11	Input Interface	HDMI IN(3(2.0)), Headphone Out (Phone Jack type),RS232(D-SUB9 pin/Phone Jack)(Phone Jack 4 Pin)		
12	Jack Interface	USB 2.0,Digital Audio Out (Optical), External Speaker Out(3.5mm Phone Jack), RJ45(Usage Purpose) (LAN)		
13	Power Supply(VoltageHz)	AC 120V-50/60 Hz		
14	Typical Power Consumption	145 W		
15	Safety Certification	CB,CU,TR		
16	EMC	CE		
17	Smart Features	Web Browser, Pre-Loaded App, Soft AP, Wi-Fi (802.11ac), Bluetooth, HDMI- ARC		
18	Screen Share	Miracast, Smart Share		
19	Signage Features	Vertical set up, Fail Over, NTP Server Setting, CISCO Certified Connectivity, Crestron connected (Network Based control), play via URL, RTC (Real Time Clock), Time Scheduler, NTP Sync Timer, BEACON, Embedded CM (Content Manager)		

WEBEL TECHNOLOGY LIMITED

Miscellaneous Items (Included in SITC): NETWORK COMPONENTS

Sl.	General Conditions	Compliance with Document from OEM? Y/N	Remarks
1	The active networking OEM should be top five companies in India for Ethernet switch market share (ports).		
2	The Active networking OEM for each products or Technology quoted should be in the business of that product or solution or Technology for last 25 years as on the date of release of the EOI.		
3	The Active networking OEM should have a local own service center within the state of installation and should have technical assistance center.		
4	The Active networking OEM for the all active network items should have a registered office in India and should directly present for last 25 years in India, from date of RFP publication.		
5	The Active networking OEM for all active components should give a declaration that products or technology quoted are neither end of sale nor end of life as on the date of installation and commissioning and are not end of support till the successful completion of the project.		
6	The active networking OEM should have valid ISO 9001 & ISO 14001 && ISO 45001 for design & development for wired & wireless networking products.		
7	The active networking OEM should have Average Annual Financial Turnover not less than 500 Crores for their networking equipment business in India only for the last each five financial years		
8	The Active OEM must not be blacklisted or banned by any State/Central Government, Semi-Government or PSU and any other GOVT. organization in INDIA and Globally.		

1.1.12 POE Switch

Qty	
Make	
Model	
Part No.	

WEBEL TECHNOLOGY LIMITED

16 Port POE SWITCH SPECIFICATION

SL.	Specification	Compliance (Yes/No)	Remarks
1	Layer 2 Switch having 16 X 10/100/1000BaseT PoE Ports & 2 X 1G SFP slots (Transceivers of same make should be loaded to get 2x 1000BaseT uplink ports)		
2	Switching Capacity should be minimum 36Gbps		
3	Packet Forwarding Rate should be minimum 26Mpps for 64- byte packet size		
4	The switch should have feature to isolate port-1 to Port-16 from each other to prevents network storm		
5	The switch should support both IEEE 802.3af (PoE) & IEEE 802.3at (PoE+)		
6	The switch should support minimum PoE power budget of 150 watt.		
7	The switch should have minimum 6KV surge protection		
8	The switch should support auto MDI/MDI-X adjustment on all ports		
9	The switch should support Power over ethernet up to 250mtr distance @ 10Mbps in minimum 8 ports.		
10	The switch should have QoS feature to prioritize video data.		
11	All type of switches should be from same make.		
12	The switch should support operating temperature 0 °C to 40 °C		
13	The switch should support operating humidity 0% to 90%		
14	The active networking OEM should have valid ISO 9001 & ISO 14001 && ISO 45001 for design & development for wired & wireless networking products.		

8 PORT PoE SWITCH SPECIFICATION

SL.	Specification	Compliance (Yes/No)	Remarks
1	Layer 2 Switch having 8 X 10/100/1000BaseT PoE Ports & 2 X 10/100/1000BaseT uplink ports		
2	Switching Capacity should be minimum 20Gbps		

WEBEL TECHNOLOGY LIMITED

3	Packet Forwarding Rate should be minimum 14.88Mpps for 64- byte packet size		
4	The switch should have feature to isolate port-1 to Port-8 from each other to prevents network storm		
5	The switch should support both IEEE 802.3af (PoE) & IEEE 802.3at (PoE+)		
6	The switch should support minimum PoE power budget of 120 watt.		
7	The switch should have minimum 6KV surge protection		
8	The switch should support auto MDI/MDI-X adjustment on all ports		
9	The switch should support Power over ethernet up to 250mtr distance @ 10Mbps in minimum 8 ports.		
10	The switch should have QoS feature to prioritize video data.		
11	All type of switches should be from same make.		
12	The switch should support operating temperature 0 °C to 40 °C		
13	The switch should support operating humidity 0% to 90%		
14	The active networking OEM should have valid ISO 9001 & ISO 14001 && ISO 45001 for design & development for wired & wireless networking products.		

1.1.13 CAT 6 UTP CABLE SPECIFICATION

SL.	Specification	Make/Mode & Compliance (Yes/No)	Remarks
1	CAT 6 Unshielded Twisted Pair 4 pair cable shall be compliant with ANSI/TIA-568-C.2 Schedule 6 & ISO 11801 Class E.		
2	The 4 pair Unshielded Twisted Pair cable shall be UL Listed, WTL Verified		
3	All CAT 6 cables shall meet or exceed the following characteristics:		
4	Mechanical Characteristics:		
5	Construction: 4 twisted pairs separated by internal X shaped, 4 channel, full separator. Half shall not be accepted.		
6	Conductor dia: 23 AWG		
7	Insulation: High density polyethylene		
8	Pairing: Two insulated conductor twisted together		
9	No.of Pair: 4 pair		
10	Color of sheath: FR-PVC GREY- Single sheath		

WEBEL TECHNOLOGY LIMITED

11	Rip Cord should be available		
12	Sequential meter marking should be available		
13	Temperature Rating: (- 20 to +60 C)		
14	Packing : 305 Mtrs.		
15	Low Frequency Electrical Parameter:		
16	Conductor Resistance (DC): ≤ 9.38 OHMS/100 MTR		
17	Resistance Unbalance: 5% Max		
18	Mutual Capacitance: < 5.6 nF/100 mtrs.		
19	Capacitance Unbalance: 330pF/100M		
20	Nominal Velocity of Propagation: 69%		
21	Impedance: $100 \pm 15\%$ OHMS		
22	Worst Case cable skew : 45ns		

1.1.14 NETWORK ACCESSORIES

NETWORK ACCESSORIES SPECIFICATION

SL.	Specification	Compliance (Yes/No)	Remarks
1	24-Port unloaded UTP Rackmount Patch Panel loaded with required number of keystone Jack		
2	Keystone Jack Specifications:		
	Plastic Housing: Polycarbonate, UL94V-2 rated or equivalent		
	Operating Life: Minimum 750 insertion cycles		
	Contact Material: Phosphor Bronze with nickel plated		
	Contact Plating: 50 μ inches gold on plug contact area		
	IDC : Housing PC , UL 94 V-2, 568A/B configuration		
	Operating Life: Minimum 200 Re-terminations		
	IDC Contact Plating: Phosphor bronze with tin plated		
3	Keystone of I/O should be UL Listed.		
4	Single Port Faceplate (should be same OEM make of Keystone)		
5	Back box should be of same make as keystone jack & face plate.		
6	Cat6 UTP Factory Crimped Patch Cord & with factory moulded boot (0.5Mtr, 2Mtr length, 3 Mtr Length)		

6 U RACK SPECIFICATION

SL.	Specification	Compliance (Yes/No)	Remarks
1	6U, 19" 500mm Width, 450mm Depth, Wall Mount Indoor Networking Rack		
2	It should confirm to DIN 41494 or equivalent standard		
3	It should be of CKD construction with steel frame		
4	Lockable tough ended glass front door		

WEBEL TECHNOLOGY LIMITED

5	19" mounting angle made of formed steel		
6	Powdered coated standard finish		
7	Top & Bottom cover with vented & cable entry exit cut outs		
8	2 pair of 19" mounting rails		
9	1U Cable Manager		
10	Roof Mounted Fan Unit		
11	230V AC, 6 way, 5 Amp Power Distribution Unit		
12	Mounting Hardware		

Miscellaneous Items (Included in SITC): Power Conditioning Systems

1.1.15 UPS (600/650 VA/1 KVA)

1 Eligibility criteria for UPS OEM

Sl.	General Conditions	Compliance with Document from OEM (Yes/No)	Remarks
1	The UPS OEM Should be an Indian Manufacturer with direct presence in India for a minimum period of 10 years.		
2	The UPS OEM should have a single installation base of 1/2/3 KVA rating UPS System of min 1000 unit with State Government/Central Government or PSU customers in India.		
3	OEM shall have ISO 9001, 27001 and 14001 certified manufacturing facility in India.		
4	The OEM shall have NABL approved lab certification.		
5	OEM product should qualify Make in India as per 2017/ 2020 DIPP guidelines. (Documentary evidence and certificates must be enclosed)		
6	The OEM must not be blacklisted or banned by any State/Central Government, Semi-Government or PSU and any other GOVT. organization in INDIA		

2. 600/650 VA LINE INRERACTIVE UPS SPEC

SL.	Specification	Compliance (Yes/No)	Remarks
1	600VA/650VA UPS Line interactive		
2	With 1 number of 12V/7AH SMF Battery or better		
3	Minimum 3 battery backup output connections (3-pin 6A),		
4	Surge protection feature, circuit breaker reset switch, LED status display and Audible Alarm feature.		

WEBEL TECHNOLOGY LIMITED

5	Automatic Voltage Regulator (AVR) with Wide Input Voltage Range 145-290V, Transfer Time - 10 ms typical : 12 ms maximum		
6	Minimum 15/20 mins backup under load of 350 W att max.		
7	Generator Compatible		

3. 1 KVA ONLINE UPS SPEC

SL.	Specification	Compliance (Yes/No)	Remarks
1	Compact Design Line Interactive UPS with Load Capacity of 600Watts / 1000VA or higher		
2	Five 6A, 2/3 Pin Indian Power Socket (4 Battery Backed-up & Surge Protected plus 1 Surge Only Protected Outlet)		
3	Automatic Voltage Regulator (AVR) with Wide Input Voltage Range 145-290V		
4	2x7.2Ah Battery for Back-Up time of 30 mints at full load		
5	Generator Compatible		

Authorized Signatory (Signature In full): _____

Name and title of Signatory: _____

Stamp of the Company: _____

TECHNICAL SPECIFICATION COMPLIANCE STATEMENT FOR Zone - 2

(Tender No. WTL/PNRD/VC/23-24/XXX dated 25/01/2024)

ALL-IN-ONE COMMERCIAL DESKTOP COMPUTER:

Feature	Specification	Compliance (Y/N)	Remarks
Processor	Intel i7 13700 12 th gen or higher		
Memory	16GB DDR5 (2 x 8GB) or higher		
Chipset	Intel Q670 chipset		
Hard drive	1TB SSD NVMe		
Operating System	Win 11 SL/ Home		
Others	Display Port, HDMI port, RJ-45, Min. 5 USB Ports, 10Gbps, Internal Speaker, Integrated WiFi + BT,		

WEBEL TECHNOLOGY LIMITED

	Hardware TPM 2 MP IR CAMERA WITH PRIVACY OPTION/WITH INTEGRATED POWER SUPPLY		
Display	23.8" IPS panel		
S/W	MS office Home & Business		
Warranty	3 Years Onsite		
Certifications	EPEAT, Energy star, ISO 9001, 14001, 27001, 45001,ROHS, UL, FCC		

Specification for Video Conferencing Camera & Expansion Mic.

1 Eligibility criteria for OEMs for Integrated VC System

Sl.	General Conditions	Compliance with Document/Undertaking
1	Complete camera ,speakerphone , remote control and microphone should be an integrated single OEM solution for ease of use and seamless experience.	
2	System should support Bluetooth and NFC (Near Field Communication) for audio call integration with mobile phone in the conference room.	
3	System must have all required certification FCC , CE , RoHS and comply to India E-waste management rules	
4	System should be Indian Standard: 9000 certified by any of the NABL government laboratory.	
5	OEM for the system should be ISO 9001:2008 certified.	
6	All required components of the system should have Government of India - Ministry of Communication & IT approval (WPC - Wireless and planning coordination certified)	
7	OEM for the system should be listed in India for more than 5 years as on bid calling date.	
8	To support bidder and for better service to end customer, OEM should have minimum 40 or more authorized service centres across India with atleast one service centre in each of the metro cities : Kolkata, Delhi , Mumbai , Bangalore , Chennai from the last 3 years as on bid calling date.	
10	OEM for the system should be innovative and must have international recognition from Wainhouse , Frost & Sullivan , let's do video , redden etc.	
11	OEM should be profitable organization with overall turnover of minimum 2 billion USD globally for the last 2 years.	
12	OEM for integrated system should be innovative and must have atleast 100 patents awarded to it's name from day one.	
13	The OEM must not be blacklisted or banned by any State/Central Government, Semi-Government or PSU and any other GOVT. organization in INDIA	

Sl No	Feature	Specification	Compliance (Y/N)	Remarks
-------	---------	---------------	------------------	---------

WEBEL TECHNOLOGY LIMITED

1	General Requirement (OEM Eligibility Criteria)	Complete camera, speakerphone, remote control and microphone should be an integrated single OEM solution for ease of use and seamless experience.		
		System should support Bluetooth and NFC (Near Field Communication) for audio call integration with mobile phone in the conference room.		
		System must have all required certification FCC, CE, RoHS and comply to India E-waste management rules		
		System should be Indian Standard: 9000 certified by any of the NABL government laboratory.		
		OEM for the system should be ISO 9001:2008 certified.		
		All required components of the system should have Government of India - Ministry of Communication & IT approval (WPC - Wireless and planning coordination certified)		
		OEM for the system should be listed in India for more than 5 years as on bid calling date.		
		To support bidder and for better service to end customer, OEM should have minimum 40 or more authorized service centers across India with at least one service center in each of the metro cities : Delhi , Mumbai , Bangalore , Chennai from the last 3 years as on bid calling date.		
		OEM for the system should be innovative and must have international recognition from Wainhouse , Frost & Sullivan , let's do video , red dot etc.		
		OEM should be profitable organization with overall turnover of minimum 2 billion USD globally for the last 2 years.		
2	Camera	OEM for integrated system should be innovative and must have inml00 patents awarded to it's name from day one.		
		OEM for the system should have option to provide SDK free of cost for the integration of the system in any workflow / Application.		
		System should support onboard H.264 with Scalable Video Coding (SVC) , UVC 1.5 for processing of video within the camera and usb Audio class (UAC) to save computing resources on end device/ laptop/PC or codec.		
		Output: H.264 ,YUY2,MJPEG.		
		Optical Resolution: 2 MP (1080p30fps or above).		
		Sensor size: 1/3" CMOS		
		SNR >= 35dB		
		Port : USB 2.0 for end device connectivity.		
		FOV : Diagonal 90°, Horizontal 81.9°and vertical 59°or above.		
		Aperature : F2.0 ~ 3.0		
		Should support autofocus.		

WEBEL TECHNOLOGY LIMITED

		Smooth Motorized pan, tilt and zoom from remote control and as well as manually from the speakerphone / control unit placed on the table.		
		It should also be possible for user to control camera via simple software application in PC & Mac.		
		Lens of the camera should have ZEISS certification		
		Should support FECC : Far End camera control.		
		Zoom: 10x lossless or better		
		Camera Control: Standard VISCA / Mini din 6 pin or equivalent.		
		Motorized 260- Degree Pan, 130-degree tilt		
		+/-90° Pan range , +35°/-45° tilt range		
		Minimum illumination : 10 lux		
		Preset : 5 or above		
3	Integrated Speakerphone	Should have Kensington Security Slot to ensure physical security of camera in conference room.		
		To be supplied with required power adaptor, regional plugs, cables minimum 5mts and mounting bracket.		
		LED for speakerphone streaming , mute , hold and bluetooth pairing so that user is aware about the status of the device.		
		LCD to show caller ID, call duration and other functional responses.		
		Should have Kensington Security Slot to ensure physical security of device in conference room.		
		Audio Technology : Must support Echo cancellation, Noise reduction, ultra-wideband audio.		
		Must have full duplex performance for real time communication.		
		Frequency response: 120Hz – 14KHz		
4	Integrated Microphones	Sensitivity: 83dBSPL +/-3dB at 1W/1M		
		Max output: 91dBSPL		
		Distortion: <5 % from 200Hz		
		Four inbuilt omni-directional microphones supporting 20-foot or more diameter range		
		Frequency response: 100Hz – 11KHz		
		Sensitivity: -28dB +/-3dB		
5	Expansion Microphones	System should be supplied with atleast 2 expansion microphones to increase coverage for large conference rooms.		
		Integrated microphone and supported expansion microphone should have mute/unmute button so that user sitting at any corner of conference room have provision to mute/ unmute the complete system with LED indication on each of microphone.		
		Distortion: <1 % @ 1KHz at 106dB		
		Type : Omni-directional		
		Should support noise canceling individually.		
6	Cable Management	Frequency response : 100hz - 20 kHz		
		Sensitivity : -24dB		
		LED color indicator : Blue -active call ; Red - microphone Mute.		

WEBEL TECHNOLOGY LIMITED

	and ambience	System should support central mountable cable manager for connection of all components in system so that single USB cable(for camera , speakerphone and microphone) with 3mts of minimum length is connected to end device (laptop,Mac, Codec ,desktop and thin client)		
7	Remote Control	All necessary cables for all the components , power adaptors , regional plugs, quick start guide along with the mounting bracket should be supplied by the OEM.		
		Type : Infrared with removable / replaceable batteries.		
		System should be supplied with all-in-one remote control to manage Camera (Pan,Tilt, Zoom, Preset) , Speakerphone (volume +/-) and Microphone (mute /unmute)		
		System should have the stand / dockable space for the remote control.		
		Range 8.5 mts or more		
8	Operating Temperature	Camera should operate from -10 to 55 degree celsius day one and certificate for the same to be furnished.		

WEBEL TECHNOLOGY LIMITED

Specification for 65" Interactive Panel

Sl No	Features	Specifications	Compliance Y/N	Remarks
1	Active Screen Size ("inch)	65"		
2	Display Backlight	DLED		
3	Display Area	1489mm(H) X 897mm(V)		
4	Display Ratio	16 : 9		
5	Resolution	3840 x 2160 or better		
6	Display Colors	10 bit or better		
7	Brightness	440nit(w/o Glass, max)		
8	Contrast Ratio (Typical)	1200:01:00		
9	Response Time (Typical)	8ms (G to G) Panel Response Time		
10	Viewing Angle	178 x 178 Degree		
11	Display Orientation	Landscape		
12	Speakers	Inbuilt		
13	Maxpower Output	2x15 Watts		
14	Speaker Position	Seamlessly mounted in lower side of the display. Front facing, Forward through		
15	Touch Technology Deployment	Inbuilt Touch and No overlay is allowed		
16	Touch Sensor	Advanced IR		
17	Surface material of touch surface	Anti-Glare & Anti-Finger Print Glass		
18	Protection	3M Antiglare		
19	Touch Screen Writing Tools	2 x Touch Pen included and Finger Both		
20	Positioning Accuracy	±1mm		
21	Transparency	88% or better		
22	Surface Hardness	9H or better		
23	Glass thickness	4 mm		
24	HID Support	Yes		
25	Touch Points in Windows	40 Touch Points		
26	Touch Points in Embedded OS	32 Touch Points		
27	Writing Tool	2 x Touch Pen included and Finger Both		
28	Communication Interface	Inbuilt USB-A type		
29	Ports	3x HDMI In, 1xHDMI Out, 1x VGA, 2xTouch USB Out,RJ45 LAN In, RJ45 LAN Out, RS232C In/Out, 4xUSB 3.0, 1xUSB 2.0, 1xUSB Type-C, Audio In, Audio Out Optical SPDIF		
30	OPS Slot	OPS Slot Inbuilt		
31	Multimedia File Formats Supported	Support all major types of multi-media files		

WEBEL TECHNOLOGY LIMITED

32	GUI - Graphic User Interface	Android OS with GUI		
33	Software Features	Software must support all basic features like Pen selection, width selection, Color change, Background change, erase, Multiple page navigation, saving of file in PDF and JPEG. Split-Screen with Input source.		
34	Special software Features	Whiteboard software should give option to navigate page with 2 fingers without using menu. Special eraser to erase while writing without selecting menu.		
35	Customized GUI	User can easily customized their own background and logo's		
36	Multimedia File Formats Supported	Support all major types of multi-media files		
37	RAM	4GB		
38	ROM	32GB		
39	Power consumption	220 Watts Typical		
40	Android Version	Android 11		
41	Android resolution	4K		
42	Storage Temperature/Humidity	-15°C~55°C/20~90%RH(Non coagulation)		
43	Working Temperature/Humidity	0°C-40°C/20~80%RH(Non coagulation)		
44	Manufacturer's authorization	The bidder must submit the authorization certification		

Specification for 55" Display

OEM Eligibility Criteria:

General Conditions	Compliance with Document from OEM
OEM should have presence in India for more than 10 years	
The manufacturer should have minimum annual turnover of Rupees 500 Crores (each year) during last three financial years.	
OEM should have its legal Office in West Bengal	
OEM should have complete direct service set-up in West Bengal with a service team of minimum 2 trained Service Manager/Engineers on OEM's payroll. They should have either Bachelor / Diploma degree	
OEM Should have ISO 9001:2015 & BS OHSAS 18001:2007 or ISO45001:2018 certifications.	
The OEM must not be blacklisted or banned by any State/Central Government, Semi-Government or PSU and any other GOVT. organization in INDIA	

Qty	
Make	

WEBEL TECHNOLOGY LIMITED

Model	
Part No.	

Specifications:

Sl. No	Feature	Specifications	Compliance (Y/N)	Remarks
1	Display Size(Diagonal)	55"		
2	Resolution	3840x2160		
3	Backlight Unit Type	Direct		
4	Brightness	400 nits		
5	Dynamic Contrast Ratio (Dynamic MCI(Hz))	10,00,000:1		
6	Static(Panel) Contrast Ratio	1,200:1		
7	Refresh Rate	60Hz		
8	HDR(10PRO/HLG)	Yes		
9	Speaker (Sound Output)	10W + 10 W		
10	Digital (Terrestrial, Cable, Satellite)	DBV-T2/C		
11	Input Interface	HDMI IN(3(2.0)), Headphone Out (Phone Jack type),RS232(D-SUB9 pin/Phone Jack)(Phone Jack 4 Pin)		
12	Jack Interface	USB 2.0,Digital Audio Out (Optical), External Speaker Out(3.5mm Phone Jack), RJ45(Usage Purpose) (LAN)		
13	Power Supply(VoltageHz)	AC 120V-50/60 Hz		
14	Typical Power Consumption	145 W		
15	Safety Certification	CB,CU,TR		
16	EMC	CE		
17	Smart Features	Web Browser, Pre-Loaded App, Soft AP, Wi-Fi (802.11ac), Bluetooth, HDMI- ARC		
18	Screen Share	Miracast, Smart Share		
19	Signage Features	Vertical set up, Fail Over, NTP Server Setting, CISCO Certified Connectivity, Crestron connected (Network Based control), play via URL, RTC (Real Time Clock), Time Scheduler, NTP Sync Timer, BEACON, Embedded CM (Content Manager)		

WEBEL TECHNOLOGY LIMITED

Miscellaneous Items (Included in SITC): NETWORK COMPONENTS

Sl.	General Conditions	Compliance with Document from OEM? Y/N	Remarks
1	The active networking OEM should be top five companies in India for Ethernet switch market share (ports).		
2	The Active networking OEM for each products or Technology quoted should be in the business of that product or solution or Technology for last 25 years as on the date of release of the EOI.		
3	The Active networking OEM should have a local own service center within the state of installation and should have technical assistance center.		
4	The Active networking OEM for the all active network items should have a registered office in India and should directly present for last 25 years in India, from date of RFP publication.		
5	The Active networking OEM for all active components should give a declaration that products or technology quoted are neither end of sale nor end of life as on the date of installation and commissioning and are not end of support till the successful completion of the project.		
6	The active networking OEM should have valid ISO 9001 & ISO 14001 && ISO 45001 for design & development for wired & wireless networking products.		
7	The active networking OEM should have Average Annual Financial Turnover not less than 500 Crores for their networking equipment business in India only for the last each five financial years		
8	The Active OEM must not be blacklisted or banned by any State/Central Government, Semi-Government or PSU and any other GOVT. organization in INDIA and Globally.		

1.1.16 POE Switch

Qty	
Make	
Model	
Part No.	

WEBEL TECHNOLOGY LIMITED

16 Port POE SWITCH SPECIFICATION

SL.	Specification	Compliance (Yes/No)	Remarks
1	Layer 2 Switch having 16 X 10/100/1000BaseT PoE Ports & 2 X 1G SFP slots (Transceivers of same make should be loaded to get 2x 1000BaseT uplink ports)		
2	Switching Capacity should be minimum 36Gbps		
3	Packet Forwarding Rate should be minimum 26Mpps for 64- byte packet size		
4	The switch should have feature to isolate port-1 to Port-16 from each other to prevents network storm		
5	The switch should support both IEEE 802.3af (PoE) & IEEE 802.3at (PoE+)		
6	The switch should support minimum PoE power budget of 150 watt.		
7	The switch should have minimum 6KV surge protection		
8	The switch should support auto MDI/MDI-X adjustment on all ports		
9	The switch should support Power over ethernet up to 250mtr distance @ 10Mbps in minimum 8 ports.		
10	The switch should have QoS feature to prioritize video data.		
11	All type of switches should be from same make.		
12	The switch should support operating temperature 0 °C to 40 °C		
13	The switch should support operating humidity 0% to 90%		
14	The active networking OEM should have valid ISO 9001 & ISO 14001 && ISO 45001 for design & development for wired & wireless networking products.		

8 PORT PoE SWITCH SPECIFICATION

SL.	Specification	Compliance (Yes/No)	Remarks
1	Layer 2 Switch having 8 X 10/100/1000BaseT PoE Ports & 2 X 10/100/1000BaseT uplink ports		
2	Switching Capacity should be minimum 20Gbps		

WEBEL TECHNOLOGY LIMITED

3	Packet Forwarding Rate should be minimum 14.88Mpps for 64- byte packet size		
4	The switch should have feature to isolate port-1 to Port-8 from each other to prevents network storm		
5	The switch should support both IEEE 802.3af (PoE) & IEEE 802.3at (PoE+)		
6	The switch should support minimum PoE power budget of 120 watt.		
7	The switch should have minimum 6KV surge protection		
8	The switch should support auto MDI/MDI-X adjustment on all ports		
9	The switch should support Power over ethernet up to 250mtr distance @ 10Mbps in minimum 8 ports.		
10	The switch should have QoS feature to prioritize video data.		
11	All type of switches should be from same make.		
12	The switch should support operating temperature 0 °C to 40 °C		
13	The switch should support operating humidity 0% to 90%		
14	The active networking OEM should have valid ISO 9001 & ISO 14001 && ISO 45001 for design & development for wired & wireless networking products.		

1.1.17 CAT 6 UTP CABLE SPECIFICATION

SL.	Specification	Make/Mode Compliance (Yes/No) &	Remarks
1	CAT 6 Unshielded Twisted Pair 4 pair cable shall be compliant with ANSI/TIA-568-C.2 Schedule 6 & ISO 11801 Class E.		
2	The 4 pair Unshielded Twisted Pair cable shall be UL Listed, WTL Verified		
3	All CAT 6 cables shall meet or exceed the following characteristics:		
4	Mechanical Characteristics:		
5	Construction: 4 twisted pairs separated by internal X shaped, 4 channel, full separator. Half shall not be accepted.		
6	Conductor dia: 23 AWG		
7	Insulation: High density polyethylene		
8	Pairing: Two insulated conductor twisted together		
9	No.of Pair: 4 pair		
10	Color of sheath: FR-PVC GREY- Single sheath		

WEBEL TECHNOLOGY LIMITED

11	Rip Cord should be available		
12	Sequential meter marking should be available		
13	Temperature Rating: (- 20 to +60 C)		
14	Packing : 305 Mtrs.		
15	Low Frequency Electrical Parameter:		
16	Conductor Resistance (DC): ≤ 9.38 OHMS/100 MTR		
17	Resistance Unbalance: 5% Max		
18	Mutual Capacitance: < 5.6 nF/100 mtrs.		
19	Capacitance Unbalance: 330pF/100M		
20	Nominal Velocity of Propagation: 69%		
21	Impedance: $100 \pm 15\%$ OHMS		
22	Worst Case cable skew : 45ns		

1.1.18 NETWORK ACCESSORIES

NETWORK ACCESSORIES SPECIFICATION

SL.	Specification	Compliance (Yes/No)	Remarks
1	24-Port unloaded UTP Rackmount Patch Panel loaded with required number of keystone Jack		
2	Keystone Jack Specifications:		
	Plastic Housing: Polycarbonate, UL94V-2 rated or equivalent		
	Operating Life: Minimum 750 insertion cycles		
	Contact Material: Phosphor Bronze with nickel plated		
	Contact Plating: 50 μ inches gold on plug contact area		
	IDC : Housing PC , UL 94 V-2, 568A/B configuration		
	Operating Life: Minimum 200 Re-terminations		
	IDC Contact Plating: Phosphor bronze with tin plated		
3	Keystone of I/O should be UL Listed.		
4	Single Port Faceplate (should be same OEM make of Keystone)		
5	Back box should be of same make as keystone jack & face plate.		
6	Cat6 UTP Factory Crimped Patch Cord & with factory moulded boot (0.5Mtr, 2Mtr length, 3 Mtr Length)		

6 U RACK SPECIFICATION

SL.	Specification	Compliance (Yes/No)	Remarks
1	6U, 19" 500mm Width, 450mm Depth, Wall Mount Indoor Networking Rack		
2	It should confirm to DIN 41494 or equivalent standard		
3	It should be of CKD construction with steel frame		
4	Lockable tough ended glass front door		

WEBEL TECHNOLOGY LIMITED

5	19" mounting angle made of formed steel		
6	Powdered coated standard finish		
7	Top & Bottom cover with vented & cable entry exit cut outs		
8	2 pair of 19" mounting rails		
9	1U Cable Manager		
10	Roof Mounted Fan Unit		
11	230V AC, 6 way, 5 Amp Power Distribution Unit		
12	Mounting Hardware		

Miscellaneous Items (Included in SITC): Power Conditioning Systems

1.1.19 UPS (600/650 VA/1 KVA)

1 Eligibility criteria for UPS OEM

Sl.	General Conditions	Compliance with Document from OEM (Yes/No)	Remarks
1	The UPS OEM Should be an Indian Manufacturer with direct presence in India for a minimum period of 10 years.		
2	The UPS OEM should have a single installation base of 1/2/3 KVA rating UPS System of min 1000 unit with State Government/Central Government or PSU customers in India.		
3	OEM shall have ISO 9001, 27001 and 14001 certified manufacturing facility in India.		
4	The OEM shall have NABL approved lab certification.		
5	OEM product should qualify Make in India as per 2017/ 2020 DIPP guidelines. (Documentary evidence and certificates must be enclosed)		
6	The OEM must not be blacklisted or banned by any State/Central Government, Semi-Government or PSU and any other GOVT. organization in INDIA		

2. 600/650 VA LINE INRERACTIVE UPS SPEC

SL.	Specification	Compliance (Yes/No)	Remarks
1	600VA/650VA UPS Line interactive		
2	With 1 number of 12V/7AH SMF Battery or better		
3	Minimum 3 battery backup output connections (3-pin 6A),		
4	Surge protection feature, circuit breaker reset switch, LED status display and Audible Alarm feature.		

WEBEL TECHNOLOGY LIMITED

5	Automatic Voltage Regulator (AVR) with Wide Input Voltage Range 145-290V, Transfer Time - 10 ms typical : 12 ms maximum		
6	Minimum 15/20 mins backup under load of 350 W att max.		
7	Generator Compatible		

3. 1 KVA ONLINE UPS SPEC

SL.	Specification	Compliance (Yes/No)	Remarks
1	Compact Design Line Interactive UPS with Load Capacity of 600Watts / 1000VA or higher		
2	Five 6A, 2/3 Pin Indian Power Socket (4 Battery Backed-up & Surge Protected plus 1 Surge Only Protected Outlet)		
3	Automatic Voltage Regulator (AVR) with Wide Input Voltage Range 145-290V		
4	2x7.2Ah Battery for Back-Up time of 30 mints at full load		
5	Generator Compatible		

Authorized Signatory (Signature In full): _____

Name and title of Signatory: _____

Stamp of the Company: _____

WEBEL TECHNOLOGY LIMITED**TECHNICAL SPECIFICATION COMPLIANCE STATEMENT
FOR Zone - 3**

(Tender No. WTL/PNRD/VC/23-24/078 dated 16/03/2024)

ALL-IN-ONE COMMERCIAL DESKTOP COMPUTER:

Feature	Specification	Compliance (Y/N)	Remarks
Processor	Intel i7 13700 12 th gen or higher		
Memory	16GB DDR5 (2 x 8GB) or higher		
Chipset	Intel Q670 chipset		
Hard drive	1TB SSD NVMe		
Operating System	Win 11 SL/ Home		
Others	Display Port, HDMI port, RJ-45, Min. 5 USB Ports, 10Gbps, Internal Speaker, Integrated WiFi + BT, Hardware TPM 2 MP IR CAMERA WITH PRIVACY OPTION/WITH INTEGRATED POWER SUPPLY		
Display	23.8" IPS panel		
S/W	MS office Home & Business		
Warranty	3 Years Onsite		
Certifications	EPEAT, Energy star, ISO 9001, 14001, 27001, 45001,ROHS, UL, FCC		

Specification for Video Conferencing Camera & Expansion Mic.**1 Eligibility criteria for OEMs for Integrated VC System**

Sl.	General Conditions	Compliance with Document/Undertaking
1	Complete camera ,speakerphone , remote control and microphone should be an integrated single OEM solution for ease of use and seamless experience.	
2	System should support Bluetooth and NFC (Near Field Communication) for audio call integration with mobile phone in the conference room.	
3	System must have all required certification FCC , CE , RoHS and comply to India E-waste management rules	
4	System should be Indian Standard: 9000 certified by any of the NABL government laboratory.	
5	OEM for the system should be ISO 9001:2008 certified.	
6	All required components of the system should have Government of India - Ministry of Communication & IT approval (WPC - Wireless and planning coordination certified)	

WEBEL TECHNOLOGY LIMITED

7	OEM for the system should be listed in India for more than 5 years as on bid calling date.	
8	To support bidder and for better service to end customer, OEM should have minimum 40 or more authorized service centres across India with atleast one service centre in each of the metro cities : Kolkata, Delhi , Mumbai , Bangalore , Chennai from the last 3 years as on bid calling date.	
10	OEM for the system should be innovative and must have international recognition from Wainhouse , Frost & Sullivan , let's do video , redden etc.	
11	OEM should be profitable organization with overall turnover of minimum 2 billion USD globally for the last 2 years.	
12	OEM for integrated system should be innovative and must have atleast 100 patents awarded to it's name from day one.	
13	The OEM must not be blacklisted or banned by any State/Central Government, Semi-Government or PSU and any other GOVT. organization in INDIA	

Sl No	Feature	Specification	Compliance (Y/N)	Remarks
1	General Requirement (OEM Eligibility Criteria)	Complete camera, speakerphone, remote control and microphone should be an integrated single OEM solution for ease of use and seamless experience.		
		System should support Bluetooth and NFC (Near Field Communication) for audio call integration with mobile phone in the conference room.		
		System must have all required certification FCC, CE, RoHS and comply to India E-waste management rules		
		System should be Indian Standard: 9000 certified by any of the NABL government laboratory.		
		OEM for the system should be ISO 9001:2008 certified.		
		All required components of the system should have Government of India - Ministry of Communication & IT approval (WPC - Wireless and planning coordination certified)		
		OEM for the system should be listed in India for more than 5 years as on bid calling date.		
		To support bidder and for better service to end customer, OEM should have minimum 40 or more authorized service centers across India with at least one service center in each of the metro cities : Delhi , Mumbai , Bangalore , Chennai from the last 3 years as on bid calling date.		
		OEM for the system should be innovative and must have international recognition from Wainhouse , Frost & Sullivan , let's do video , red dot etc.		

WEBEL TECHNOLOGY LIMITED

		OEM should be profitable organization with overall turnover of minimum 2 billion USD globally for the last 2 years.		
		OEM for integrated system should be innovative and must have inml100 patents awarded to it's name from day one.		
2	Camera	OEM for the system should have option to provide SDK free of cost for the integration of the system in any workflow / Application.		
		System should support onboard H.264 with Scalable Video Coding (SVC) , UVC 1.5 for processing of video within the camera and usb Audio class (UAC) to save computing resources on end device/ laptop/PC or codec.		
		Output: H.264 ,YUY2,MJPEG.		
		Optical Resolution: 2 MP (1080p30fps or above).		
		Sensor size: 1/3" CMOS		
		SNR >= 35dB		
		Port : USB 2.0 for end device connectivity.		
		FOV : Diagonal 90°, Horizontal 81.9°and vertical 59°or above.		
		Aperature : F2.0 ~ 3.0		
		Should support autofocus.		
		Smooth Motorized pan, tilt and zoom from remote control and as well as manually from the speakerphone / control unit placed on the table.		
		It should also be possible for user to control camera via simple software application in PC & Mac.		
		Lens of the camera should have ZEISS certification		
		Should support FECC : Far End camera control.		
		Zoom: 10x lossless or better		
		Camera Control: Standard VISCA / Mini din 6 pin or equivalent.		
		Motorized 260- Degree Pan, 130-degree tilt		
		+/-90° Pan range , +35°/-45° tilt range		
		Minimum illumination : 10 lux		
		Preset : 5 or above		
		Should have Kensington Security Slot to ensure physical security of camera in conference room.		
3	Integrated Speakerphone	To be supplied with required power adaptor, regional plugs, cables minimum 5mts and mounting bracket.		
		LED for speakerphone streaming , mute , hold and bluetooth pairing so that user is aware about the status of the device.		
		LCD to show caller ID, call duration and other functional responses.		
		Should have Kensington Security Slot to ensure physical security of device in conference room.		
		Audio Technology : Must support Echo cancellation, Noise reduction, ultra-wideband audio.		
		Must have full duplex performance for real time communication.		

WEBEL TECHNOLOGY LIMITED

		Frequency response: 120Hz – 14KHz		
		Sensitivity: 83dB SPL +/-3dB at 1W/1M		
		Max output: 91dB SPL		
4	Integrated Microphones	Distortion: <5 % from 200Hz		
		Four inbuilt omni-directional microphones supporting 20-foot or more diameter range		
		Frequency response: 100Hz – 11KHz		
		Sensitivity: -28dB +/-3dB		
		System should be supplied with atleast 2 expansion microphones to increase coverage for large conference rooms.		
		Integrated microphone and supported expansion microphone should have mute/unmute button so that user sitting at any corner of conference room have provision to mute/ unmute the complete system with LED indication on each of microphone.		
5	Expansion Microphones	Distortion: <1 % @ 1KHz at 106dB		
		Type : Omni-directional		
		Should support noise canceling individually.		
		Frequency response : 100hz - 20 kHz		
		Sensitivity : -24dB		
6	Cable Management and ambience	LED color indicator : Blue -active call ; Red - microphone Mute.		
		System should support central mountable cable manager for connection of all components in system so that single USB cable(for camera , speakerphone and microphone) with 3mts of minimum length is connected to end device (laptop,Mac, Codec ,desktop and thin client)		
7	Remote Control	All necessary cables for all the components , power adaptors , regional plugs, quick start guide along with the mounting bracket should be supplied by the OEM.		
		Type : Infrared with removable / replaceable batteries.		
		System should be supplied with all-in-one remote control to manage Camera (Pan,Tilt, Zoom, Preset) , Speakerphone (volume +/-) and Microphone (mute /unmute)		
		System should have the stand / dockable space for the remote control.		
		Range 8.5 mts or more		
8	Operating Temperature	Camera should operate from -10 to 55 degree celsius day one and certificate for the same to be furnished.		

WEBEL TECHNOLOGY LIMITED

Specification for 65" Interactive Panel

Sl No	Features	Specifications	Compliance Y/N	Remarks
1	Active Screen Size ("inch)	65"		
2	Display Backlight	DLED		
3	Display Area	1489mm(H) X 897mm(V)		
4	Display Ratio	16 : 9		
5	Resolution	3840 x 2160 or better		
6	Display Colors	10 bit or better		
7	Brightness	440nit(w/o Glass, max)		
8	Contrast Ratio (Typical)	1200:01:00		
9	Response Time (Typical)	8ms (G to G) Panel Response Time		
10	Viewing Angle	178 x 178 Degree		
11	Display Orientation	Landscape		
12	Speakers	Inbuilt		
13	Maxpower Output	2x15 Watts		
14	Speaker Position	Seamlessly mounted in lower side of the display. Front facing, Forward through		
15	Touch Technology Deployment	Inbuilt Touch and No overlay is allowed		
16	Touch Sensor	Advanced IR		
17	Surface material of touch surface	Anti-Glare & Anti-Finger Print Glass		
18	Protection	3M Antiglare		
19	Touch Screen Writing Tools	2 x Touch Pen included and Finger Both		
20	Positioning Accuracy	±1mm		
21	Transparency	88% or better		
22	Surface Hardness	9H or better		
23	Glass thickness	4 mm		
24	HID Support	Yes		
25	Touch Points in Windows	40 Touch Points		
26	Touch Points in Embedded OS	32 Touch Points		
27	Writing Tool	2 x Touch Pen included and Finger Both		
28	Communication Interface	Inbuilt USB-A type		
29	Ports	3x HDMI In, 1xHDMI Out, 1x VGA, 2xTouch USB Out,RJ45 LAN In, RJ45 LAN Out, RS232C In/Out, 4xUSB 3.0, 1xUSB 2.0, 1xUSB Type-C, Audio In, Audio Out Optical SPDIF		
30	OPS Slot	OPS Slot Inbuilt		
31	Multimedia File Formats Supported	Support all major types of multi-media files		

WEBEL TECHNOLOGY LIMITED

32	GUI - Graphic User Interface	Android OS with GUI		
33	Software Features	Software must support all basic features like Pen selection, width selection, Color change, Background change, erase, Multiple page navigation, saving of file in PDF and JPEG. Split-Screen with Input source.		
34	Special software Features	Whiteboard software should give option to navigate page with 2 fingers without using menu. Special eraser to erase while writing without selecting menu.		
35	Customized GUI	User can easily customized their own background and logo's		
36	Multimedia File Formats Supported	Support all major types of multi-media files		
37	RAM	4GB		
38	ROM	32GB		
39	Power consumption	220 Watts Typical		
40	Android Version	Android 11		
41	Android resolution	4K		
42	Storage Temperature/Humidity	-15°C~55°C/20~90%RH(Non coagulation)		
43	Working Temperature/Humidity	0°C-40°C/20~80%RH(Non coagulation)		
44	Manufacturer's authorization	The bidder must submit the authorization certification		

Specification for 55" Display

OEM Eligibility Criteria:

General Conditions	Compliance with Document from OEM
OEM should have presence in India for more than 10 years	
The manufacturer should have minimum annual turnover of Rupees 500 Crores (each year) during last three financial years.	
OEM should have its legal Office in West Bengal	
OEM should have complete direct service set-up in West Bengal with a service team of minimum 2 trained Service Manager/Engineers on OEM's payroll. They should have either Bachelor / Diploma degree	
OEM Should have ISO 9001:2015 & BS OHSAS 18001:2007 or ISO45001:2018 certifications.	
The OEM must not be blacklisted or banned by any State/Central Government, Semi-Government or PSU and any other GOVT. organization in INDIA	

Qty	
Make	

WEBEL TECHNOLOGY LIMITED

Model	
Part No.	

Specifications:

Sl. No	Feature	Specifications	Compliance (Y/N)	Remarks
1	Display Size(Diagonal)	55"		
2	Resolution	3840x2160		
3	Backlight Unit Type	Direct		
4	Brightness	400 nits		
5	Dynamic Contrast Ratio (Dynamic MCI(Hz))	10,00,000:1		
6	Static(Panel) Contrast Ratio	1,200:1		
7	Refresh Rate	60Hz		
8	HDR(10PRO/HLG)	Yes		
9	Speaker (Sound Output)	10W + 10 W		
10	Digital (Terrestrial, Cable, Satellite)	DBV-T2/C		
11	Input Interface	HDMI IN(3(2.0)), Headphone Out (Phone Jack type),RS232(D-SUB9 pin/Phone Jack)(Phone Jack 4 Pin)		
12	Jack Interface	USB 2.0,Digital Audio Out (Optical), External Speaker Out(3.5mm Phone Jack), RJ45(Usage Purpose) (LAN)		
13	Power Supply(VoltageHz)	AC 120V-50/60 Hz		
14	Typical Power Consumption	145 W		
15	Safety Certification	CB,CU,TR		
16	EMC	CE		
17	Smart Features	Web Browser, Pre-Loaded App, Soft AP, Wi-Fi (802.11ac), Bluetooth, HDMI- ARC		
18	Screen Share	Miracast, Smart Share		
19	Signage Features	Vertical set up, Fail Over, NTP Server Setting, CISCO Certified Connectivity, Crestron connected (Network Based control), play via URL, RTC (Real Time Clock), Time Scheduler, NTP Sync Timer, BEACON, Embedded CM (Content Manager)		

WEBEL TECHNOLOGY LIMITED

Miscellaneous Items (Included in SITC): NETWORK COMPONENTS

Sl.	General Conditions	Compliance with Document from OEM? Y/N	Remarks
1	The active networking OEM should be top five companies in India for Ethernet switch market share (ports).		
2	The Active networking OEM for each products or Technology quoted should be in the business of that product or solution or Technology for last 25 years as on the date of release of the EOI.		
3	The Active networking OEM should have a local own service center within the state of installation and should have technical assistance center.		
4	The Active networking OEM for the all active network items should have a registered office in India and should directly present for last 25 years in India, from date of RFP publication.		
5	The Active networking OEM for all active components should give a declaration that products or technology quoted are neither end of sale nor end of life as on the date of installation and commissioning and are not end of support till the successful completion of the project.		
6	The active networking OEM should have valid ISO 9001 & ISO 14001 && ISO 45001 for design & development for wired & wireless networking products.		
7	The active networking OEM should have Average Annual Financial Turnover not less than 500 Crores for their networking equipment business in India only for the last each five financial years		
8	The Active OEM must not be blacklisted or banned by any State/Central Government, Semi-Government or PSU and any other GOVT. organization in INDIA and Globally.		

1.1.20 POE Switch

Qty	
Make	
Model	
Part No.	

WEBEL TECHNOLOGY LIMITED

16 Port POE SWITCH SPECIFICATION

SL.	Specification	Compliance (Yes/No)	Remarks
1	Layer 2 Switch having 16 X 10/100/1000BaseT PoE Ports & 2 X 1G SFP slots (Transceivers of same make should be loaded to get 2x 1000BaseT uplink ports)		
2	Switching Capacity should be minimum 36Gbps		
3	Packet Forwarding Rate should be minimum 26Mpps for 64- byte packet size		
4	The switch should have feature to isolate port-1 to Port-16 from each other to prevents network storm		
5	The switch should support both IEEE 802.3af (PoE) & IEEE 802.3at (PoE+)		
6	The switch should support minimum PoE power budget of 150 watt.		
7	The switch should have minimum 6KV surge protection		
8	The switch should support auto MDI/MDI-X adjustment on all ports		
9	The switch should support Power over ethernet up to 250mtr distance @ 10Mbps in minimum 8 ports.		
10	The switch should have QoS feature to prioritize video data.		
11	All type of switches should be from same make.		
12	The switch should support operating temperature 0 °C to 40 °C		
13	The switch should support operating humidity 0% to 90%		
14	The active networking OEM should have valid ISO 9001 & ISO 14001 && ISO 45001 for design & development for wired & wireless networking products.		

8 PORT PoE SWITCH SPECIFICATION

SL.	Specification	Compliance (Yes/No)	Remarks
1	Layer 2 Switch having 8 X 10/100/1000BaseT PoE Ports & 2 X 10/100/1000BaseT uplink ports		
2	Switching Capacity should be minimum 20Gbps		

WEBEL TECHNOLOGY LIMITED

3	Packet Forwarding Rate should be minimum 14.88Mpps for 64- byte packet size		
4	The switch should have feature to isolate port-1 to Port-8 from each other to prevents network storm		
5	The switch should support both IEEE 802.3af (PoE) & IEEE 802.3at (PoE+)		
6	The switch should support minimum PoE power budget of 120 watt.		
7	The switch should have minimum 6KV surge protection		
8	The switch should support auto MDI/MDI-X adjustment on all ports		
9	The switch should support Power over ethernet up to 250mtr distance @ 10Mbps in minimum 8 ports.		
10	The switch should have QoS feature to prioritize video data.		
11	All type of switches should be from same make.		
12	The switch should support operating temperature 0 °C to 40 °C		
13	The switch should support operating humidity 0% to 90%		
14	The active networking OEM should have valid ISO 9001 & ISO 14001 && ISO 45001 for design & development for wired & wireless networking products.		

1.1.21 CAT 6 UTP CABLE SPECIFICATION

SL.	Specification	Make/Mode Compliance (Yes/No) &	Remarks
1	CAT 6 Unshielded Twisted Pair 4 pair cable shall be compliant with ANSI/TIA-568-C.2 Schedule 6 & ISO 11801 Class E.		
2	The 4 pair Unshielded Twisted Pair cable shall be UL Listed, WTL Verified		
3	All CAT 6 cables shall meet or exceed the following characteristics:		
4	Mechanical Characteristics:		
5	Construction: 4 twisted pairs separated by internal X shaped, 4 channel, full separator. Half shall not be accepted.		
6	Conductor dia: 23 AWG		
7	Insulation: High density polyethylene		
8	Pairing: Two insulated conductor twisted together		
9	No.of Pair: 4 pair		
10	Color of sheath: FR-PVC GREY- Single sheath		

WEBEL TECHNOLOGY LIMITED

11	Rip Cord should be available		
12	Sequential meter marking should be available		
13	Temperature Rating: (- 20 to +60 C)		
14	Packing : 305 Mtrs.		
15	Low Frequency Electrical Parameter:		
16	Conductor Resistance (DC): ≤ 9.38 OHMS/100 MTR		
17	Resistance Unbalance: 5% Max		
18	Mutual Capacitance: < 5.6 nF/100 mtrs.		
19	Capacitance Unbalance: 330pF/100M		
20	Nominal Velocity of Propagation: 69%		
21	Impedance: $100 \pm 15\%$ OHMS		
22	Worst Case cable skew : 45ns		

1.1.22 NETWORK ACCESSORIES

NETWORK ACCESSORIES SPECIFICATION

SL.	Specification	Compliance (Yes/No)	Remarks
1	24-Port unloaded UTP Rackmount Patch Panel loaded with required number of keystone Jack		
2	Keystone Jack Specifications:		
	Plastic Housing: Polycarbonate, UL94V-2 rated or equivalent		
	Operating Life: Minimum 750 insertion cycles		
	Contact Material: Phosphor Bronze with nickel plated		
	Contact Plating: 50 μ inches gold on plug contact area		
	IDC : Housing PC , UL 94 V-2, 568A/B configuration		
	Operating Life: Minimum 200 Re-terminations		
	IDC Contact Plating: Phosphor bronze with tin plated		
3	Keystone of I/O should be UL Listed.		
4	Single Port Faceplate (should be same OEM make of Keystone)		
5	Back box should be of same make as keystone jack & face plate.		
6	Cat6 UTP Factory Crimped Patch Cord & with factory moulded boot (0.5Mtr, 2Mtr length, 3 Mtr Length)		

6 U RACK SPECIFICATION

SL.	Specification	Compliance (Yes/No)	Remarks
1	6U, 19" 500mm Width, 450mm Depth, Wall Mount Indoor Networking Rack		
2	It should confirm to DIN 41494 or equivalent standard		
3	It should be of CKD construction with steel frame		
4	Lockable tough ended glass front door		

WEBEL TECHNOLOGY LIMITED

5	19" mounting angle made of formed steel		
6	Powdered coated standard finish		
7	Top & Bottom cover with vented & cable entry exit cut outs		
8	2 pair of 19" mounting rails		
9	1U Cable Manager		
10	Roof Mounted Fan Unit		
11	230V AC, 6 way, 5 Amp Power Distribution Unit		
12	Mounting Hardware		

Miscellaneous Items (Included in SITC): Power Conditioning Systems

1.1.23 UPS (600/650 VA/1 KVA)

1 Eligibility criteria for UPS OEM

Sl.	General Conditions	Compliance with Document from OEM (Yes/No)	Remarks
1	The UPS OEM Should be an Indian Manufacturer with direct presence in India for a minimum period of 10 years.		
2	The UPS OEM should have a single installation base of 1/2/3 KVA rating UPS System of min 1000 unit with State Government/Central Government or PSU customers in India.		
3	OEM shall have ISO 9001, 27001 and 14001 certified manufacturing facility in India.		
4	The OEM shall have NABL approved lab certification.		
5	OEM product should qualify Make in India as per 2017/ 2020 DIPP guidelines. (Documentary evidence and certificates must be enclosed)		
6	The OEM must not be blacklisted or banned by any State/Central Government, Semi-Government or PSU and any other GOVT. organization in INDIA		

2. 600/650 VA LINE INRERACTIVE UPS SPEC

SL.	Specification	Compliance (Yes/No)	Remarks
1	600VA/650VA UPS Line interactive		
2	With 1 number of 12V/7AH SMF Battery or better		
3	Minimum 3 battery backup output connections (3-pin 6A),		
4	Surge protection feature, circuit breaker reset switch, LED status display and Audible Alarm feature.		

WEBEL TECHNOLOGY LIMITED

5	Automatic Voltage Regulator (AVR) with Wide Input Voltage Range 145-290V, Transfer Time - 10 ms typical : 12 ms maximum		
6	Minimum 15/20 mins backup under load of 350 W att max.		
7	Generator Compatible		

3. 1 KVA ONLINE UPS SPEC

SL.	Specification	Compliance (Yes/No)	Remarks
1	Compact Design Line Interactive UPS with Load Capacity of 600Watts / 1000VA or higher		
2	Five 6A, 2/3 Pin Indian Power Socket (4 Battery Backed-up & Surge Protected plus 1 Surge Only Protected Outlet)		
3	Automatic Voltage Regulator (AVR) with Wide Input Voltage Range 145-290V		
4	2x7.2Ah Battery for Back-Up time of 30 mints at full load		
5	Generator Compatible		

Authorized Signatory (Signature In full): _____

Name and title of Signatory: _____

Stamp of the Company: _____

SECTION – P

MANUFACTURER'S AUTHORIZATION FORM

Date:

To
Webel Technology limited
Plot-5, Block-BP, Sector-V
Salt Lake
Kolkata-700 091

Ref: Tender No.: WTL/PNRD/VC/23-24/078 dated 16/03/2024

WHEREAS _____ who are official producers of
_____ and having production facilities at
_____ do hereby authorize
_____ located at
_____ (hereinafter, the "Bidder") to submit a bid of the
following Products produced by us, for the Supply Requirements associated with the above Invitation for Bids.

1. _____
2. _____

When resold by _____, these products are subject to onsite comprehensive warranty from the date of final acceptance of the system by the customer.

We assure you that in the event of _____, not being able to fulfill its obligation as our Service Provider in respect of our standard Warranty Terms we would continue to meet our Warranty Terms through alternate arrangements.

We also confirm that _____ is our authorized service provider/system integrator and can hence provide maintenance and upgrade support for our products.

We also confirm that the products quoted are on our current product list and are not likely to be discontinued with in from the day of this letter. We assure availability of spares for the products for the next five years after warranty.

We also confirm that the material will be delivered within six weeks from the date of placement of confirmed order.

We also confirm that adequate spare product will be kept available with the SI for 3 years.

Name _____ In the capacity of _____

Signed _____

WEBEL TECHNOLOGY LIMITED

Duly authorized to sign the authorization for and on behalf of _____

Dated on _____ day of _____ 2024

Note: This letter of authority must be on the letterhead of the Manufacturer and duly signed by an authorized signatory.

WEBEL TECHNOLOGY LIMITED

SECTION - R

NIT DECLARATION FOR BIDDER

(Bidders are requested to furnish the Format given in this section, filling the entire Blank and to be submitted on Bidder's Letter Head)

To
Webel Technology Limited
Plot – 5, Block – BP, Sector - V,
Salt Lake City,
Kolkata – 700091.

Sub: Supply, Installation, Testing, Commissioning (SITC) and Maintenance of IP Based VC system to be deployed for Distance Learning Facility in 251 units (1 unit at BRAIPRD, Kalyani, Nadia, 1 unit at Zilla Parishad, North 24 Parganas and 249 units at Panchayat Samiti level) of West Bengal.

Dear Sir,

We the undersigned bidder/(s) declare that we have read and examined in details the specifications and other documents of the subject Tender No. WTL/PNRD/VC/23-24/078 dated 16/03/2024. Supply, Installation, Testing, Commissioning (SITC) and Maintenance of IP Based VC system to be deployed for Distance Learning Facility in 251 units (1 unit at BRAIPRD, Kalyani, Nadia, 1 unit at Zilla Parishad, North 24 Parganas and 249 units at Panchayat Samiti level) of West Bengal, published by Webel Technology Limited in e-Tender website.

We further declare that we have agreed and accepted all the clauses / sub-clauses / formats / terms & conditions other requirements related to the said tender and we will abide by the same as mentioned in the tender document while participating and executing the said tender.

Thanking you, we remain

Yours faithfully

.....
Signature

.....
Name in full

.....
Designation

.....
Company Stamp

Dated, thisday of2021

WEBEL TECHNOLOGY LIMITED

SECTION – T

FORMAT FOR LIST OF CLIENTS OF SIMILAR ORDERS

(Tender No. WTL/PNRD/VC/23-24/078 dated 16/03/2024)

[illegible]

Authorized Signatory (Signature In full): _____

Name and title of Signatory: _____

Company Rubber Stamp: _____

WEBEL TECHNOLOGY LIMITED

SECTION – U

LIST OF LOCATIONS

The list of sites as per the Zones are as provided below. The lists of sites are tentative and may be changed during final implementation of the project.

List of Sites – Zone 1

Sl. No	Name of the District	Name of Panchayati Samiti approved for FY 2023-24	No of Units	Zone
1	COOCH BEHAR	COOCH BEHAR-II	6	1
	COOCH BEHAR	DINHATA-I		1
	COOCH BEHAR	DINHATA-II		1
	COOCH BEHAR	SITAI		1
	COOCH BEHAR	SITALKUCHI		1
	COOCH BEHAR	HALDIBARI		1
2	DARJEELING FOR SILIGURI MAHAKUMA PARISHAD AREA	NAXALBARI	2	1
	DARJEELING FOR SILIGURI MAHAKUMA PARISHAD AREA	PHANSIDEWA		1
3	DARJEELING Hill Area	RONGLI-RONGLIOT	1	1
4	PURULIA	ARSHA	14	1
	PURULIA	BALARAMPUR		1
	PURULIA	BANDWAN		1
	PURULIA	BARABAZAR		1
	PURULIA	HURA		1
	PURULIA	JHALDA-II		1
	PURULIA	JOYPUR		1
	PURULIA	KASHIPUR		1
	PURULIA	MANBAZAR-II		1
	PURULIA	PARA		1
	PURULIA	PUNCHA		1
	PURULIA	PURULIA-II		1
	PURULIA	RAGHUNATHPUR-II		1
	PURULIA	SANTURI		1
5	JHARGRAM	BINPUR-I	6	1
	JHARGRAM	BINPUR-II		1
	JHARGRAM	GOPIBALLAVPUR-I		1
	JHARGRAM	GOPIBALLAVPUR-II		1
	JHARGRAM	JAMBONI		1
	JHARGRAM	SANKRAIL		1
6	SOUTH 24 PARGANAS	BHANGORE-I	22	1

WEBEL TECHNOLOGY LIMITED

	SOUTH 24 PARGANAS	BHANGORE-II		1
	SOUTH 24 PARGANAS	JOYNAGAR-I		1
	SOUTH 24 PARGANAS	JOYNAGAR-II		1
	SOUTH 24 PARGANAS	KULTALI		1
	SOUTH 24 PARGANAS	SONARPUR		1
	SOUTH 24 PARGANAS	BASANTI		1
	SOUTH 24 PARGANAS	CANNING-II		1
	SOUTH 24 PARGANAS	DIAMOND HARBOUR-II		1
	SOUTH 24 PARGANAS	FALTA		1
	SOUTH 24 PARGANAS	KULPI		1
	SOUTH 24 PARGANAS	MAGRAHAT-I		1
	SOUTH 24 PARGANAS	MAGRAHAT-II		1
	SOUTH 24 PARGANAS	MADIRBAZAR		1
	SOUTH 24 PARGANAS	MATHURAPUR-I		1
	SOUTH 24 PARGANAS	MATHURAPUR-II		1
	SOUTH 24 PARGANAS	NAMKHANA		1
	SOUTH 24 PARGANAS	SAGAR		1
	SOUTH 24 PARGANAS	BISHNUPUR-II		1
	SOUTH 24 PARGANAS	BUDGE BUDGE-I		1
	SOUTH 24 PARGANAS	BUDGE BUDGE-II		1
	SOUTH 24 PARGANAS	THAKURPUKUR MAHESHTALA		1
7	MALDA	HARISH CHANDRAPUR-I	12	1
	MALDA	CHANCHAL-II		1
	MALDA	RATUA-I		1
	MALDA	RATUA-II		1
	MALDA	GAZOLE		1
	MALDA	HABIBPUR		1
	MALDA	BAMONGOLA		1
	MALDA	MANIKCHAK		1
	MALDA	OLD MALDA		1
	MALDA	KALIACHAK-I		1
	MALDA	KALIACHAK-II		1
	MALDA	KALIACHAK-III		1
8	BANKURA	BANKURA-II	17	1
	BANKURA	BARJORA		1
	BANKURA	CHHATNA		1
	BANKURA	GANGAJALGHATI		1
	BANKURA	HIRBANDH		1
	BANKURA	INDPUR		1
	BANKURA	JOYPUR		1
	BANKURA	KOTULPUR		1
	BANKURA	MEJHIA		1
	BANKURA	ONDA		1
	BANKURA	PATRASAYER		1
	BANKURA	RAIPUR		1
	BANKURA	RANIBANDH		1

WEBEL TECHNOLOGY LIMITED

	BANKURA	SARENGA		1
	BANKURA	SIMLAPAL		1
	BANKURA	SONAMUKHI		1
	BANKURA	TALDANGRA		1
9	PURBA MEDINIPUR	SAHID MATANGINI	19	1
	PURBA MEDINIPUR	KOLAGHAT		1
	PURBA MEDINIPUR	PANSKURA-I		1
	PURBA MEDINIPUR	MOYNA		1
	PURBA MEDINIPUR	NANDAKUMAR		1
	PURBA MEDINIPUR	MAHISHADAL		1
	PURBA MEDINIPUR	SUTAHATA		1
	PURBA MEDINIPUR	NANDIGRAM-II		1
	PURBA MEDINIPUR	NANDIGRAM-I		1
	PURBA MEDINIPUR	CHANDIPUR		1
	PURBA MEDINIPUR	PATASHPUR-I		1
	PURBA MEDINIPUR	PATASHPUR-II		1
	PURBA MEDINIPUR	EGRA-II		1
	PURBA MEDINIPUR	CONTAI-III		1
	PURBA MEDINIPUR	DESHAPRAN		1
	PURBA MEDINIPUR	BHAGWANPUR-II		1
	PURBA MEDINIPUR	KHEJURI-II		1
	PURBA MEDINIPUR	RAMNAGAR-I		1
	PURBA MEDINIPUR	RAMNAGAR-II		1
10	State level Unit	BRAIPRD, Kalyani, Nadia	1	1
Total no of Units in Zone 1			100	

List of Sites – Zone 2

Sl. No	Name of the District	Name of Panchayati Samiti approved for FY 2023-24	No of Units	Zone 2
1	ALIPURDUAR	ALIPURDUAR-II	4	2
	ALIPURDUAR	FALAKATA		2
	ALIPURDUAR	KALCHINI		2
	ALIPURDUAR	KUMARGRAM		2
2	MURSHIDABAD	BELDANGA-I	19	2
	MURSHIDABAD	BELDANGA-II		2
	MURSHIDABAD	HARIHARPARA		2
	MURSHIDABAD	NOWDA		2
	MURSHIDABAD	RANINAGAR-I		2
	MURSHIDABAD	RANINAGAR-II		2
	MURSHIDABAD	BHAGWANGOLA-I		2
	MURSHIDABAD	BHAGWANGOLA-II		2
	MURSHIDABAD	LALGOLA		2
	MURSHIDABAD	NABAGRAM		2
	MURSHIDABAD	KHARGRAM		2
	MURSHIDABAD	BURWAN		2
	MURSHIDABAD	BHARATPUR-I		2

WEBEL TECHNOLOGY LIMITED

	MURSHIDABAD	BHARATPUR-II		2
	MURSHIDABAD	RAGHUNATHGANJ-II		2
	MURSHIDABAD	SUTI-I		2
	MURSHIDABAD	SUTI-II		2
	MURSHIDABAD	SAMSERGANJ		2
	MURSHIDABAD	SAGARDIGHI		2
3	PURBA BARDHAMAN	GALSI-II	17	2
	PURBA BARDHAMAN	RAINA-I		2
	PURBA BARDHAMAN	RAINA-II		2
	PURBA BARDHAMAN	MONTESWAR		2
	PURBA BARDHAMAN	MEMARI-II		2
	PURBA BARDHAMAN	KALNA-II		2
	PURBA BARDHAMAN	MEMARI-I		2
	PURBA BARDHAMAN	BURDWAN-II		2
	PURBA BARDHAMAN	BHATAR		2
	PURBA BARDHAMAN	PURBASTHALI-I		2
	PURBA BARDHAMAN	KATWA-II		2
	PURBA BARDHAMAN	KETUGRAM-I		2
	PURBA BARDHAMAN	KETUGRAM-II		2
	PURBA BARDHAMAN	MONGALKOTE		2
	PURBA BARDHAMAN	AUSGRAM-II		2
	PURBA BARDHAMAN	AUSGRAM-I		2
	PURBA BARDHAMAN	GALSI-I		2
4	HOWRAH	DOMJUR	11	2
	HOWRAH	JAGATBALLAVPUR		2
	HOWRAH	SANKRAIL		2
	HOWRAH	PANCHLA		2
	HOWRAH	AMTA-I		2
	HOWRAH	AMTA-II		2
	HOWRAH	BAGNAN-I		2
	HOWRAH	BAGNAN-II		2
	HOWRAH	SHYAMPUR-I		2
	HOWRAH	SHYAMPUR-II		2
	HOWRAH	ULUBERIA-II		2
5	JALPAIGURI	MAYNAGURI	6	2
	JALPAIGURI	KRANTI		2
	JALPAIGURI	BANARHAT		2
	JALPAIGURI	DHUPGURI		2
	JALPAIGURI	RAJGANJ		2
	JALPAIGURI	MATIALI		2
6	KALIMPONG	LAVA	2	2
	KALIMPONG	PEDONG		2
7	UTTAR DINAJPUR	CHOPRA	9	2
	UTTAR DINAJPUR	ISLAMPUR		2
	UTTAR DINAJPUR	GOALPOKER-I		2
	UTTAR DINAJPUR	GOALPOKER-II		2

WEBEL TECHNOLOGY LIMITED

	UTTAR DINAJPUR	KARANDIGHI		2
	UTTAR DINAJPUR	RAIGANJ		2
	UTTAR DINAJPUR	HEMTABAD		2
	UTTAR DINAJPUR	KALIYAGANJ		2
	UTTAR DINAJPUR	ITAHAR		2
8	DAKSHIN DINAJPUR	KUMARGANJ	5	2
	DAKSHIN DINAJPUR	HILI		2
	DAKSHIN DINAJPUR	TAPAN		2
	DAKSHIN DINAJPUR	HARIRAMPUR		2
	DAKSHIN DINAJPUR	BANSHIHARI		2
9	NADIA	KARIMPUR-II	12	2
	NADIA	TEHATTA-II		2
	NADIA	NAKASHIPARA		2
	NADIA	CHAPRA		2
	NADIA	KALIGANJ		2
	NADIA	KRISHNAGAR-II		2
	NADIA	NABADWIP		2
	NADIA	HANSKHALI		2
	NADIA	SANTIPUR		2
	NADIA	RANAGHAT-I		2
	NADIA	HARINGHATA		2
	NADIA	KALYANI		2
10	PASCHIM BARDHAMAN	PANDABESWAR	5	2
	PASCHIM BARDHAMAN	ANDAL		2
	PASCHIM BARDHAMAN	JAMURIA		2
	PASCHIM BARDHAMAN	RANIGANJ		2
	PASCHIM BARDHAMAN	BARABANI		2
11	HOOGHLY	PANDUA	12	2
	HOOGHLY	BALAGARH		2
	HOOGHLY	POLBA-DADPUR		2
	HOOGHLY	DHANIAKHALI		2
	HOOGHLY	HARIPAL		2
	HOOGHLY	KHANAKUL-I		2
	HOOGHLY	KHANAKUL-II		2
	HOOGHLY	GOGHAT-I		2
	HOOGHLY	GOGHAT-II		2
	HOOGHLY	CHANDITALA-I		2
	HOOGHLY	CHANDITALA-II		2
	HOOGHLY	JANGIPARA		2
Total no of Sites in Zone 2			102	

WEBEL TECHNOLOGY LIMITED

List of Sites – Zone 3

Sl. No	Name of the District	Name of Panchayati Samiti approved for FY 2023-24	No of Units	Zone 3
1	BIRBHUM	SURI-II	15	3
	BIRBHUM	DUBRAJPUR		3
	BIRBHUM	KHOYRASOLE		3
	BIRBHUM	SAINTHIA		3
	BIRBHUM	RAJNAGAR		3
	BIRBHUM	MAHAMMAD BAZAR		3
	BIRBHUM	ILAMBAZAR		3
	BIRBHUM	LABPUR		3
	BIRBHUM	RAMPURHAT-II		3
	BIRBHUM	MAYURESWAR-I		3
	BIRBHUM	MAYURESWAR-II		3
	BIRBHUM	NALHATI-I		3
	BIRBHUM	NALHATI-II		3
	BIRBHUM	MURARAI-I		3
	BIRBHUM	MURARAI-II		3
2	PASCHIM MEDINIPUR	GARBETA-I	17	3
	PASCHIM MEDINIPUR	GARBETA-II		3
	PASCHIM MEDINIPUR	GARBETA-III		3
	PASCHIM MEDINIPUR	KESHPUR		3
	PASCHIM MEDINIPUR	SALBONI		3
	PASCHIM MEDINIPUR	KHARAGPUR-II		3
	PASCHIM MEDINIPUR	DEBRA		3
	PASCHIM MEDINIPUR	DANTAN-I		3
	PASCHIM MEDINIPUR	DANTAN-II		3
	PASCHIM MEDINIPUR	NARAYANGARH		3
	PASCHIM MEDINIPUR	PINGLA		3
	PASCHIM MEDINIPUR	MOHANPUR		3
	PASCHIM MEDINIPUR	SABONG		3
	PASCHIM MEDINIPUR	KESHIARY		3
	PASCHIM MEDINIPUR	DASPUR-I		3
	PASCHIM MEDINIPUR	CHANDRAKONA-I		3
	PASCHIM MEDINIPUR	CHANDRAKONA-II		3
3	NORTH 24 PARGANAS	BAGDAH	17	3
	NORTH 24 PARGANAS	HABRA-I		3
	NORTH 24 PARGANAS	HABRA-II		3
	NORTH 24 PARGANAS	DEGANGA		3
	NORTH 24 PARGANAS	AMDANGA		3
	NORTH 24 PARGANAS	RAJARHAT		3
	NORTH 24 PARGANAS	BARASAT-II		3

WEBEL TECHNOLOGY LIMITED

	NORTH 24 PARGANAS	BASIRHAT-II		3
	NORTH 24 PARGANAS	SANDESHKHALI-I		3
	NORTH 24 PARGANAS	SANDESHKHALI-II		3
	NORTH 24 PARGANAS	MINAKHAN		3
	NORTH 24 PARGANAS	HAROA		3
	NORTH 24 PARGANAS	HASNABAD		3
	NORTH 24 PARGANAS	SWARUPNAGAR		3
	NORTH 24 PARGANAS	BADURIA		3
	NORTH 24 PARGANAS	BARRACKPORE-I		3
	NORTH 24 PARGANAS	ZILLA PARISHAD		3
Total No of Units in Zone 3			49	